

TE PATUKIRIKIRI

and

THE CROWN

**DEED OF SETTLEMENT SCHEDULE:
ATTACHMENTS**

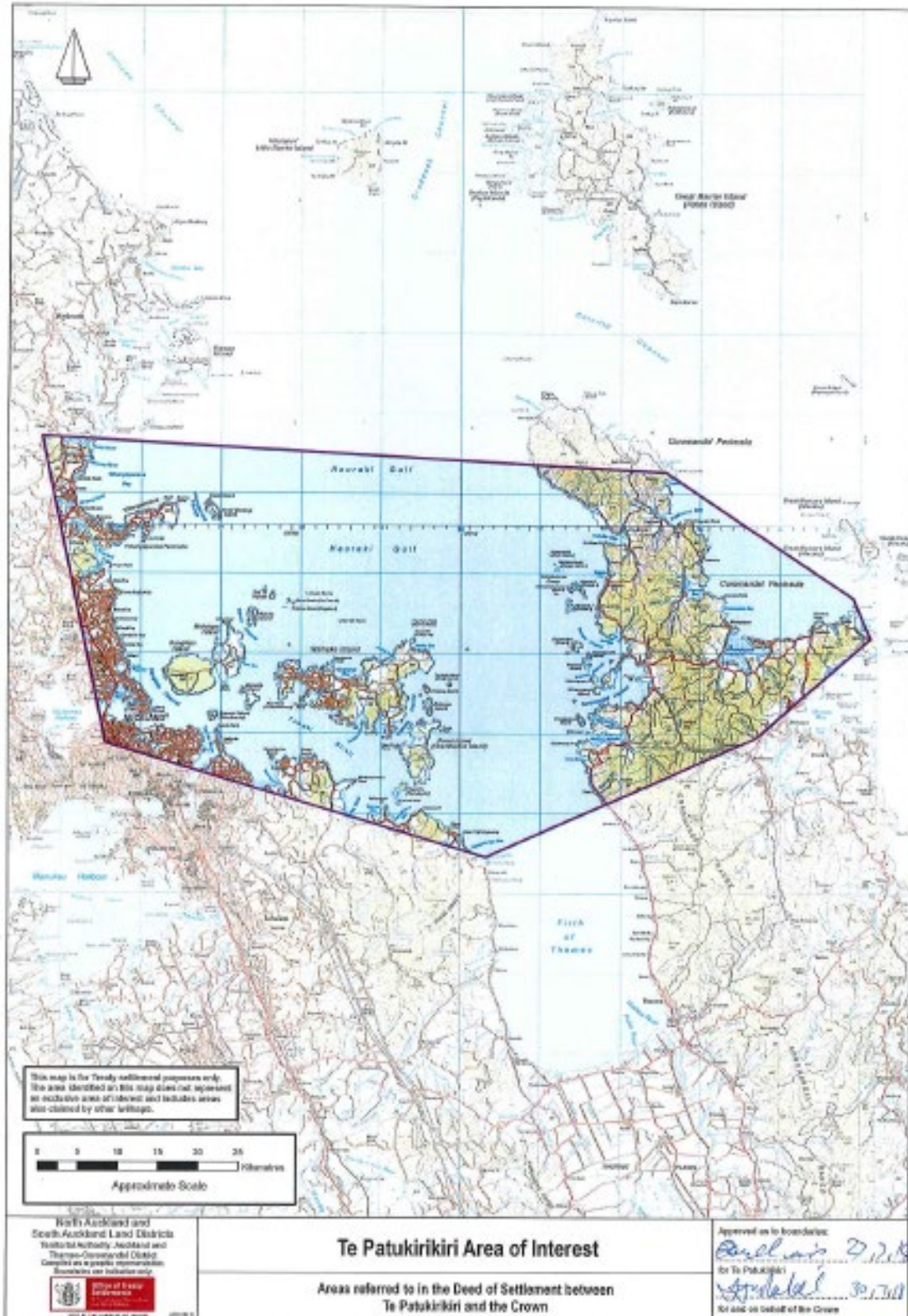
ATTACHMENTS

TABLE OF CONTENTS

1	AREA OF INTEREST.....	1
2	DEED PLANS	2
3	TE RERENGA SCHOOL HOUSE SITE (LAND ONLY) DIAGRAM.....	12
4	AOTEA RFR LAND.....	13
5	AOTEA RFR LAND MAP.....	16
6	DRAFT SETTLEMENT BILL	17

ATTACHMENTS

1 AREA OF INTEREST



2 DEED PLANS

Statutory areas

- Kauri Block Conservation Area (OTS-403-137)
- Preece Point property (OTS-403-138)
- Taumatawahine Scenic Reserve (OTS-403-139)

Cultural redress properties

- Coromandel Hospital property (OTS-403-131)
- Opera Point property (OTS-403-132)
- Patukirikiri property (OTS-403-133)
- Te Kauri Block property (OTS-403-134)
- Tokatea (OTS-403-135)
- Whakanekeneke property (OTS-403-136)

ATTACHMENTS

2: DEED PLANS



ATTACHMENTS

2: DEED PLANS



ATTACHMENTS

2: DEED PLANS



ATTACHMENTS
2: DEED PLANS



ATTACHMENTS

2: DEED PLANS

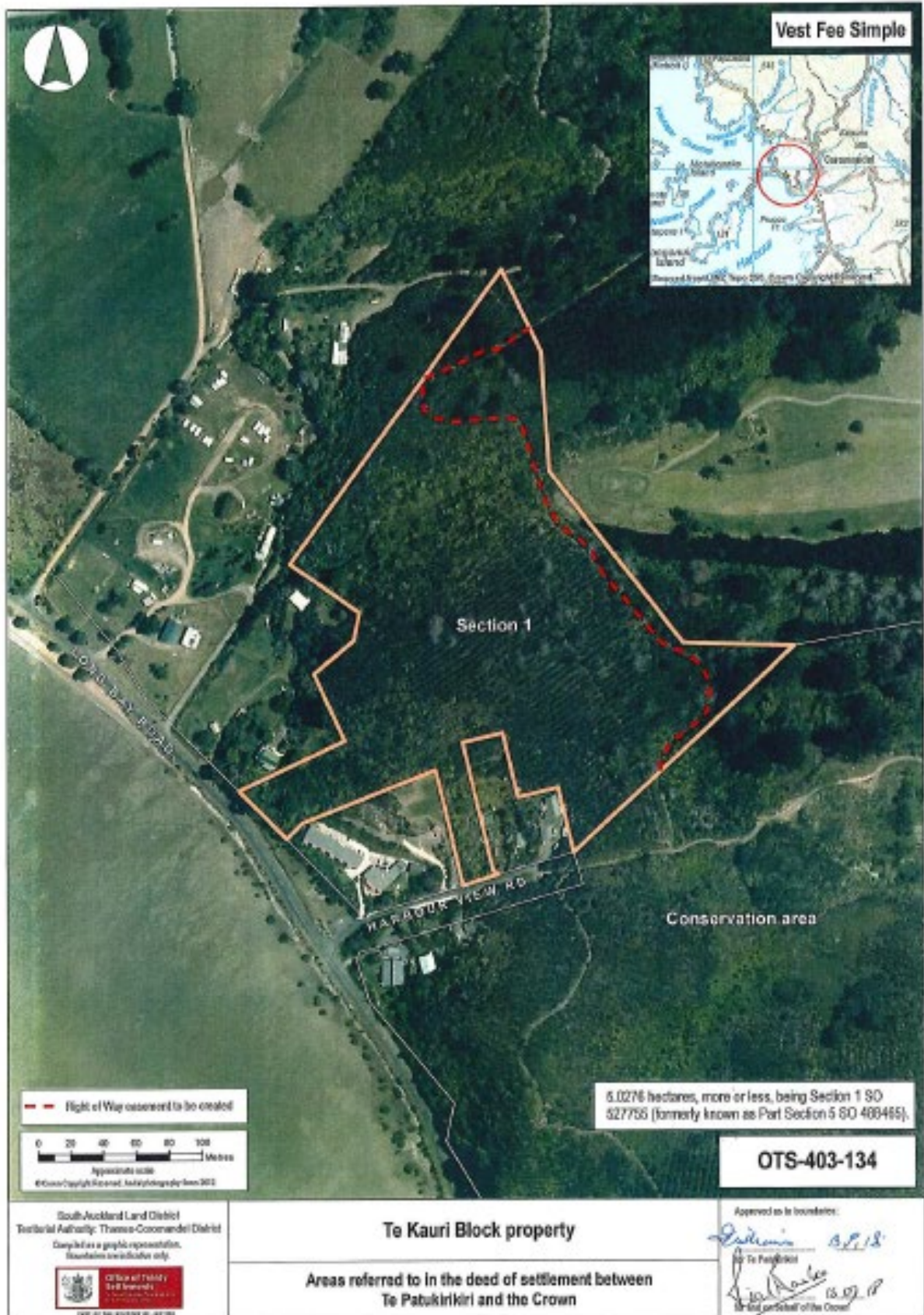


ATTACHMENTS
2: DEED PLANS

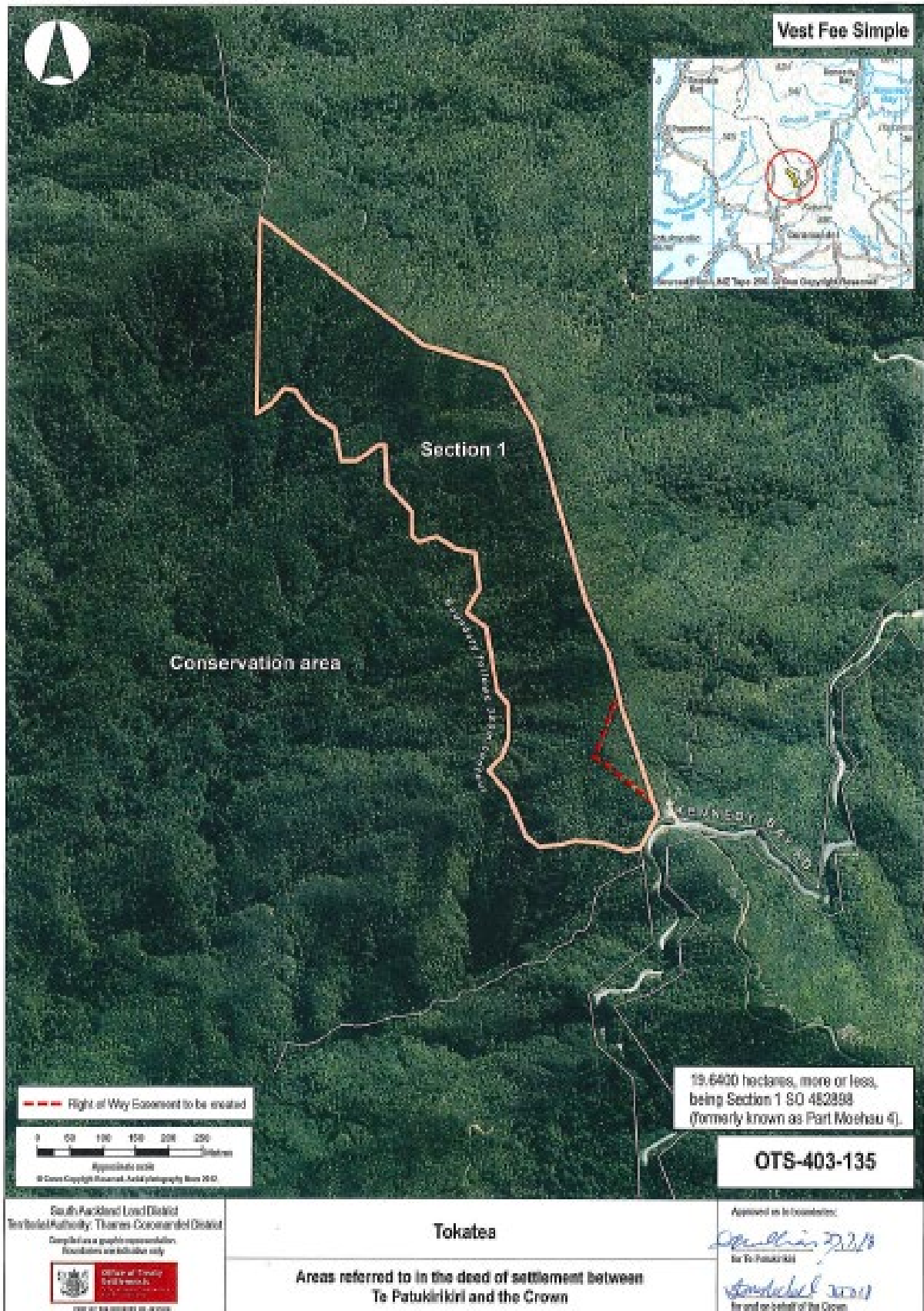


ATTACHMENTS

2: DEED PLANS



ATTACHMENTS
2: DEED PLANS



ATTACHMENTS

2: DEED PLANS



ATTACHMENTS

3 TE RERENGA SCHOOL HOUSE SITE (LAND ONLY) DIAGRAM



ATTACHMENTS

4 AOTEA RFR LAND

Property Number *	Property name	Description (all North Auckland Land District)	Land holding Agency
1	Harataonga Scenic Reserve	264.4292 hectares, more or less, being Allotments 27, 28, 29, and, 30 Parish of Harataonga. All <i>Gazette</i> 1941, p 595.	Department of Conservation
2	Komahunga conservation area (part Aotea Conservation Park)	7.6760 hectares, more or less, being Section 24 SO 477347. Part <i>Gazette</i> 2015-In2067.	Department of Conservation
3	Medlands Wildlife Management Reserve	4.1520 hectares, more or less, being Lot 1 DP 73752. All computer freehold register NA29C/1438. 5.6322 hectares, more or less, being Part Lot 2 DP 73752. Balance computer freehold register NA29C/1439.	Department of Conservation
4	Okupu conservation area (part Aotea Conservation Park)	14.6016 hectares, more or less, being Allotment SE127 Parish of Aotea. Part <i>Gazette</i> 2015-In2067.	Department of Conservation
5	Oruawharo Creek Recreation Reserve	0.4935 hectares, more or less, being Lots 1, 2, 6 and 7 DP 61572. Part <i>Gazette</i> notice 163078.1. 0.1141 hectares, more or less, being Lot 8 DP 61572. All computer freehold register NA17B/770.	Department of Conservation
6	Oruawharo Creek Government Purpose Reserve	1.3680 hectares, more or less, being Lot 1 DP 98569. All computer freehold register NA53C/1315. 3.6779 hectares, more or less, being Lot 1 DP 108696. All computer freehold register NA61B/242. 1.1170 hectares, more or less, being Lot 2 DP 98569. All computer freehold register NA53C/1316.	Department of Conservation

ATTACHMENTS

4: AOTEA RFR LAND

7	Oruawharo Marginal Strip	25.0 hectares, approximately, being Crown Land adjoining Allotments SE144, 144B, 70 and NW69 Parish of Aotea. 2.0 hectares, approximately, being Crown Land adjoining Allotments 65 and SE69 Parish of Aotea.	Department of Conservation
8	Pa Point Recreation Reserve	2.6450 hectares, more or less, being Allotment 253 Parish of Aotea. All <i>Gazette</i> notice 555032.1.	Department of Conservation
9	Rosalie Bay Marginal Strip	2.0 hectares, approximately, being Crown Land adjoining Allotments 52 and NE45 Parish of Aotea.	Department of Conservation
10	Ruahine North conservation area (part Aotea Conservation Park)	58.0 hectares, approximately, being Allotments 52, E51, M51 and NE45 Parish of Aotea. Part <i>Gazette</i> 2015-In2067.	Department of Conservation
11	Ruahine South conservation area (part Aotea Conservation Park)	26.2 hectares, approximately, being Allotment SW44 Parish of Aotea. Part <i>Gazette</i> 2015-In2067	Department of Conservation
12	Sandy Bay Marginal Strip	0.8 hectare, approximately, being Crown Land adjoining Allotment E35 Parish of Aotea.	Department of Conservation
13	Shoal Bay conservation area (part Aotea Conservation Park)	0.2093 hectares, more or less, being Stopped Road SO 28649 and Section 23 SO 477347. Part <i>Gazettes</i> 1940, page 3136 and 2015-In2067.	Department of Conservation
14	Te Atamira Scenic Reserve	0.8093 hectares, more or less, being Allotment 34A Parish of Aotea. All <i>Gazette</i> 1991 page 2667.	Department of Conservation
15	Tryphena Scenic Reserve	190.8447 hectares, more or less, being Allotments 95, NW100, and SE125 Parish of Aotea. All <i>Gazette</i> 1981 page 1628. 16.1874 hectares, more or less, being Allotment M100 Parish of Aotea. All computer freehold register NA533/181 (limited as to parcels).	Department of Conservation

ATTACHMENTS

4: AOTEA RFR LAND

		<p>24.5568 hectares, more or less, being Allotment SE100 Parish of Aotea. All Proclamation 14192.</p> <p>89.2989 hectares, more or less, being Allotments NW101, NW102, M102, SE102, and NW103 Parish of Aotea. Part Gazette 1950 page 238.</p> <p>24.2811 hectares, more or less, being Allotment M101 Parish of Aotea. Part Proclamation 13302.</p> <p>16.4960 hectares, more or less, being Allotment SE101 Parish of Aotea. All Proclamation 12992.</p> <p>66.3912 hectares, more or less, being Allotments 226 and 227 Parish of Aotea. Part Gazette 1949 page 1591.</p>	
16	Wairahi forest sanctuary (part Aotea Conservation Park)	477.1600 hectares, more or less, being Section 19 SO 477346. Part <i>Gazette</i> 2015-In2067.	Department of Conservation

* Each property number identifies the approximate location of that property on the Aotea RFR land map in part 5.

ATTACHMENTS

5 AOTEA RFR LAND MAP



ATTACHMENTS

6 DRAFT SETTLEMENT BILL