

TE ĀKITAI WAIOHUA
and
TE ĀKITAI WAIOHUA SETTLEMENT TRUST
and
THE CROWN

**DEED OF SETTLEMENT:
ATTACHMENTS**

ATTACHMENTS

TABLE OF CONTENTS

1.	AREA OF INTEREST	3
2.	DEED PLANS.....	5
3.	DRAFT SETTLEMENT BILL.....	41

ATTACHMENTS

1. AREA OF INTEREST

ATTACHMENTS
1: AREA OF INTEREST



North Auckland and South Auckland Land Districts
Territorial Authority: Auckland,
Hauraki and Waikato Districts
Compiled as a graphic representation.
Boundaries are indicative only.

Te Arawhiti
THE OFFICE FOR MĀORI-CROWN RELATIONS

Area of Interest

Areas referred to in the deed of settlement between
Te Ākitai Waiohūa and the Crown

Approved as to boundaries:

[Signature] 03.15.2021
for Te Ākitai Waiohūa

[Signature] 20.07.2021
for and on behalf of the Crown

ATTACHMENTS

2. DEED PLANS

ATTACHMENTS

2: DEED PLANS

Statutory areas

- Arch Hill Scenic Reserve (OMCR-131-011):
- Cameron Town Historic Reserve (OMCR-131-012):
- Coastal statutory acknowledgement area (OMCR-131-037);
- Drury Conservation Area (OMCR-131-013):
- Drury Creek Islands Recreation Reserve (OMCR-131-014):
- Goldie Bush Scenic Reserve (OMCR-131-015):
- Kirikiri (OMCR-131-016):
- Mangatāwhiri Forest Conservation Area (OMCR-131-017):
- Mangere Conservation Area (OMCR-131-018):
- Matukutūreia / McLaughlins Mountain area (OMCR-131-020);
- Maungapikitia area (OMCR-131-019):
- Meola Creek Quarry Reserve (OMCR-131-021):
- Mutukaroa / Hamlin Hill (OMCR-131-022):
- Ōtuataua Stonefields Reserve area (OMCR-131-023):
- Paerata Scenic Reserve (OMCR-131-024):
- Papanimu Conservation Area (OMCR-131-025):
- Raverthorpe Conservation Area (OMCR-131-026):
- Raverthorpe Scenic Reserve (OMCR-131-027):
- Red Hill Scenic Reserve (OMCR-131-028):
- Richard Sylvan Memorial Scenic Reserve (OMCR-131-029):
- Rose Garden Reserve (OMCR-131-030):
- St Johns Redoubt Historic Reserve (OMCR-131-031):
- Te Ia (OMCR-131-032):
- Te Maketu Historic Reserve (OMCR-131-033):
- Thorne Bay Recreation Reserve (OMCR-131-034):
- Vining Scenic Reserve (OMCR-131-035):
- Wairoa Gorge Scenic Reserve (OMCR-131-036);

Cultural redress properties



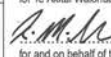
- Matukutūreia property (OMCR-131-005)
- Patumahoe property (OMCR-131-006)
- Reremoana property (OMCR-131-008)
- Te Ana o Matukutūruru (OMCR-131-010)
- Te Ngahere o Papakura (OMCR-131-004)
- Te Ngahere o Pukekohe (OMCR-131-007)
- Waimahia property (OMCR-131-009)

**ATTACHMENTS
2: DEED PLANS**



0.4047 hectares, more or less, being Lots 2, 3, 5 and 6 DP 15387.
 0.1012 hectares, more or less, being Lot 4 DP 15387.
 0.5463 hectares, more or less, being Lot 146 DP 47965.
 0.1454 hectares, more or less, being Lots 1 and 2 DP 47965.
 3.0496 hectares, more or less, being Lots 1, 15, 16, 17, 18, 19, 20, 21 and 22 DP 15387.

OMCR-131-004

<p>North Auckland Land District Territorial Authority: Auckland Compiled as a graphic representation. Boundaries are indicative only.</p>  <p>THE OFFICE FOR MĀORI CROWN RELATIONS</p>	<p>Te Ngāhere o Papakura</p> <p>Areas referred to in the deed of settlement between Te Ākitaī Waiohūa and the Crown</p>	<p>Approved as to boundaries:</p>  <p>for Te Ākitaī Waiohūa</p>  <p>for and on behalf of the Crown</p> <p>20.07.2021</p>
--	---	--

**ATTACHMENTS
2: DEED PLANS**



North Auckland Land District
Territorial Authority: Auckland
Compiled as a graphic representation.
Boundaries are indicative only.

THE OFFICE FOR MĀORI CROWN RELATIONS

Matukutūreia property

Areas referred to in the deed of settlement between
Te Ākitai Waiohūa and the Crown

Approved as to boundaries:

[Signature] 20.07.2021
for Te Ākitai Waiohūa
[Signature] 20.07.2021
for and on behalf of the Crown

**ATTACHMENTS
2: DEED PLANS**



North Auckland Land District
Territorial Authority: Auckland
Compiled as a graphic representation.
Boundaries are indicative only.

Te Arawhiti
THE OFFICE FOR MĀORI-CROWN RELATIONS

Patumahoe property

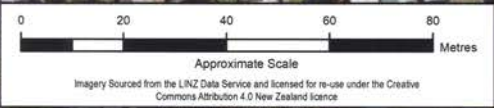
Areas referred to in the deed of settlement between
Te Ākitai Waiohūa and the Crown

Approved as to boundaries:

[Signature]
for Te Ākitai Waiohūa

[Signature] 20.07.2021
for and on behalf of the Crown

**ATTACHMENTS
2: DEED PLANS**



1.1195 hectares, more or less, being
Lots 20, 21, 22, 23, 24, 25, 26 and
27 DP 16013.

OMCR-131-007

North Auckland Land District
Territorial Authority: Auckland
Compiled as a graphic representation.
Boundaries are indicative only.



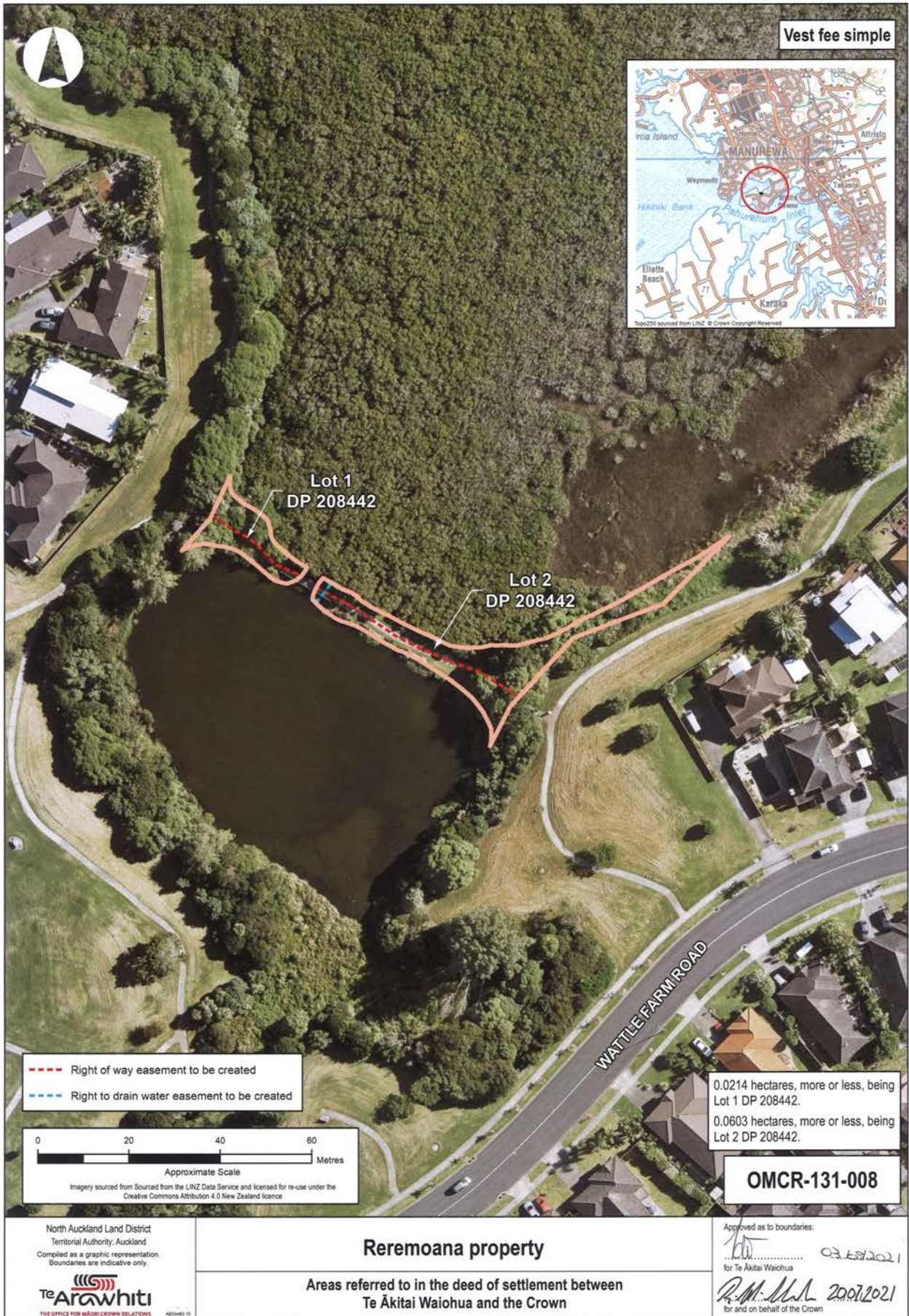
Te Ngahere o Pukekohe

Areas referred to in the deed of settlement between
Te Ākitai Waiohūa and the Crown

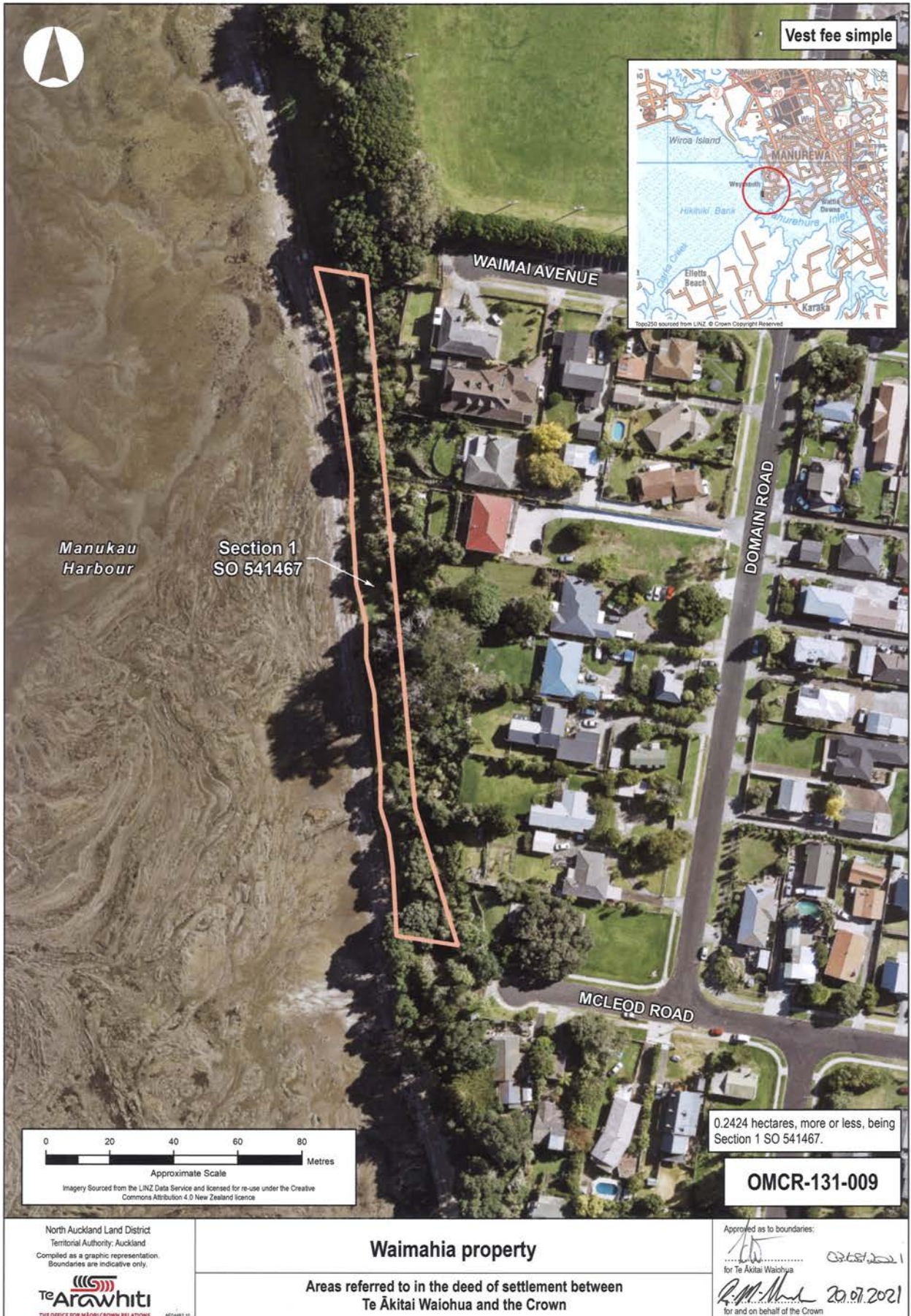
Approved as to boundaries:

[Signature] 03.15.2021
for Te Ākitai Waiohūa
[Signature] 20.07.2021
for and on behalf of the Crown

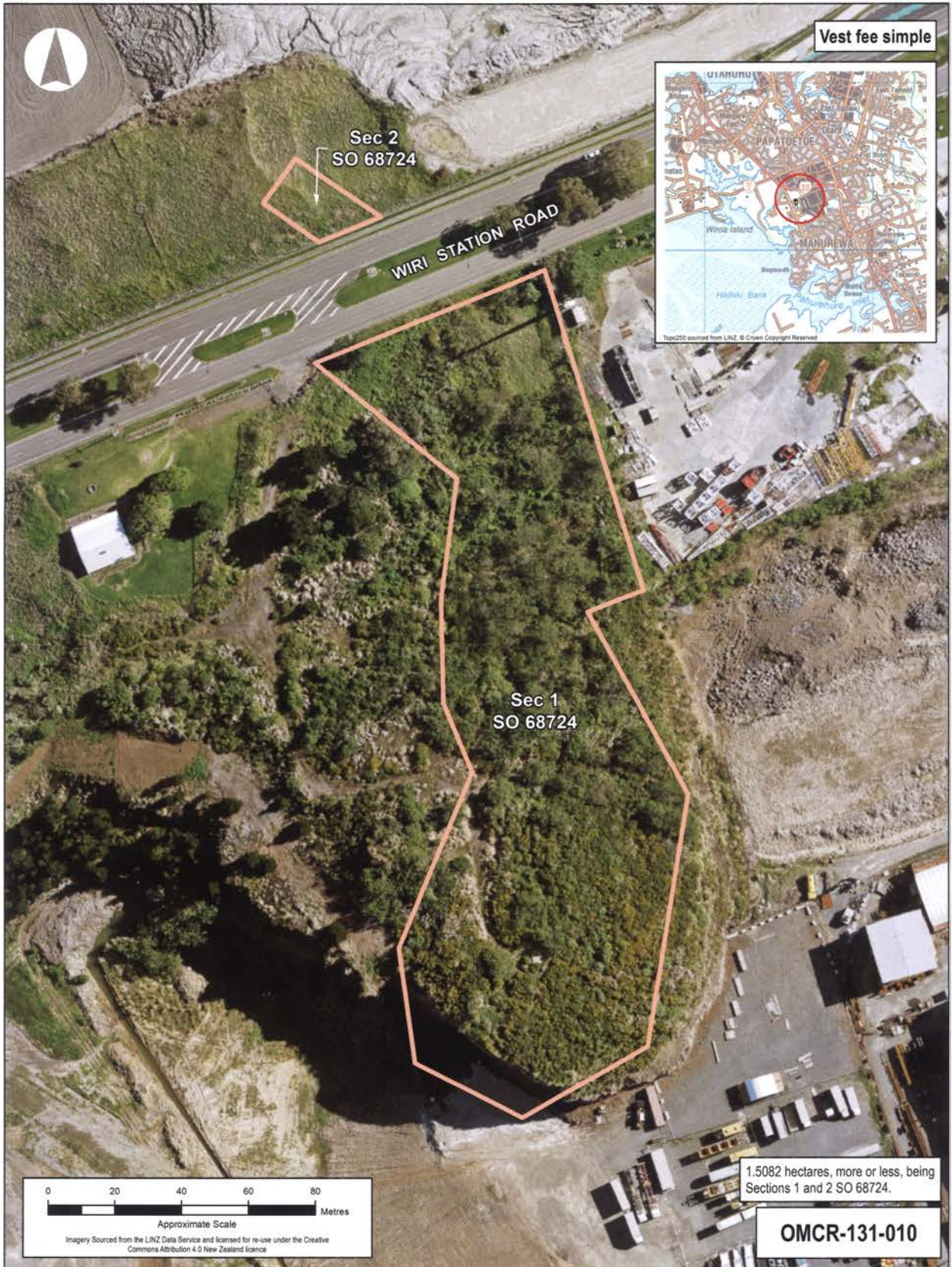
**ATTACHMENTS
2: DEED PLANS**



**ATTACHMENTS
2: DEED PLANS**



**ATTACHMENTS
2: DEED PLANS**



0 20 40 60 80
Metres
Approximate Scale
Imagery Sourced from the LINZ Data Service and licensed for re-use under the Creative Commons Attribution 4.0 New Zealand licence

1.5082 hectares, more or less, being Sections 1 and 2 SO 68724.

OMCR-131-010

North Auckland Land District
Territorial Authority, Auckland
Compiled as a graphic representation.
Boundaries are indicative only.
Te Arawhiti
THE OFFICE FOR MĀORI CROWN RELATIONS

Te Ana o Matukutūruru
Areas referred to in the deed of settlement between
Te Ākitai Waiohūa and the Crown

Approved as to boundaries:
for Te Ākitai Waiohūa
for and on behalf of the Crown
20.07.2021

**ATTACHMENTS
2: DEED PLANS**



0 50 100 150 200
Metres
Approximate Scale
Imagery Sourced from the LINZ Data Service and licensed for re-use under the Creative Commons Attribution 4.0 New Zealand licence

OMCR-131-011

North Auckland Land District
Territorial Authority, Auckland
Compiled as a graphic representation.
Boundaries are indicative only.



THE OFFICE FOR MĀORI-CROWN RELATIONS

Arch Hill Scenic Reserve

Areas referred to in the deed of settlement between
Te Ākitai Waiohūa and the Crown



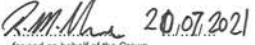
Approved as to boundaries:

[Signature] 03/10/2021
for Te Ākitai Waiohūa

[Signature] 20/07/2021
for and on behalf of the Crown

**ATTACHMENTS
2: DEED PLANS**



<p>North Auckland Land District Territorial Authority: Waikato District Compiled as a graphic representation. Boundaries are indicative only.</p>  <p>THE OFFICE FOR MĀORI-CROWN RELATIONS</p>	<p align="center">Cameron Town Historic Reserve</p> <p align="center">Areas referred to in the deed of settlement between Te Ākitai Waiohūa and the Crown</p>	<p>Approved as to boundaries:</p>  <p>for Te Ākitai Waiohūa</p>  <p>20.07.2021 for and on behalf of the Crown</p>
---	--	---

**ATTACHMENTS
2: DEED PLANS**



0 50 100 150 200 Metres
Approximate Scale
Imagery Sourced from the LINZ Data Service and licensed for re-use under the Creative Commons Attribution 4.0 New Zealand licence.

OMCR-131-013

North Auckland Land District
Territorial Authority: Auckland
Compiled as a graphic representation.
Boundaries are indicative only.



Drury Conservation Area

Areas referred to in the deed of settlement between
Te Ākitai Waiohūa and the Crown

Approved as to boundaries:
for Te Ākitai Waiohūa
20.07.2021
for and on behalf of the Crown

**ATTACHMENTS
2: DEED PLANS**



North Auckland Land District
Territorial Authority: Auckland
Compiled as a graphic representation.
Boundaries are indicative only.

Te Arawhiti
THE OFFICE FOR MĀORI CROWN RELATIONS

Drury Creek Islands Recreation Reserve

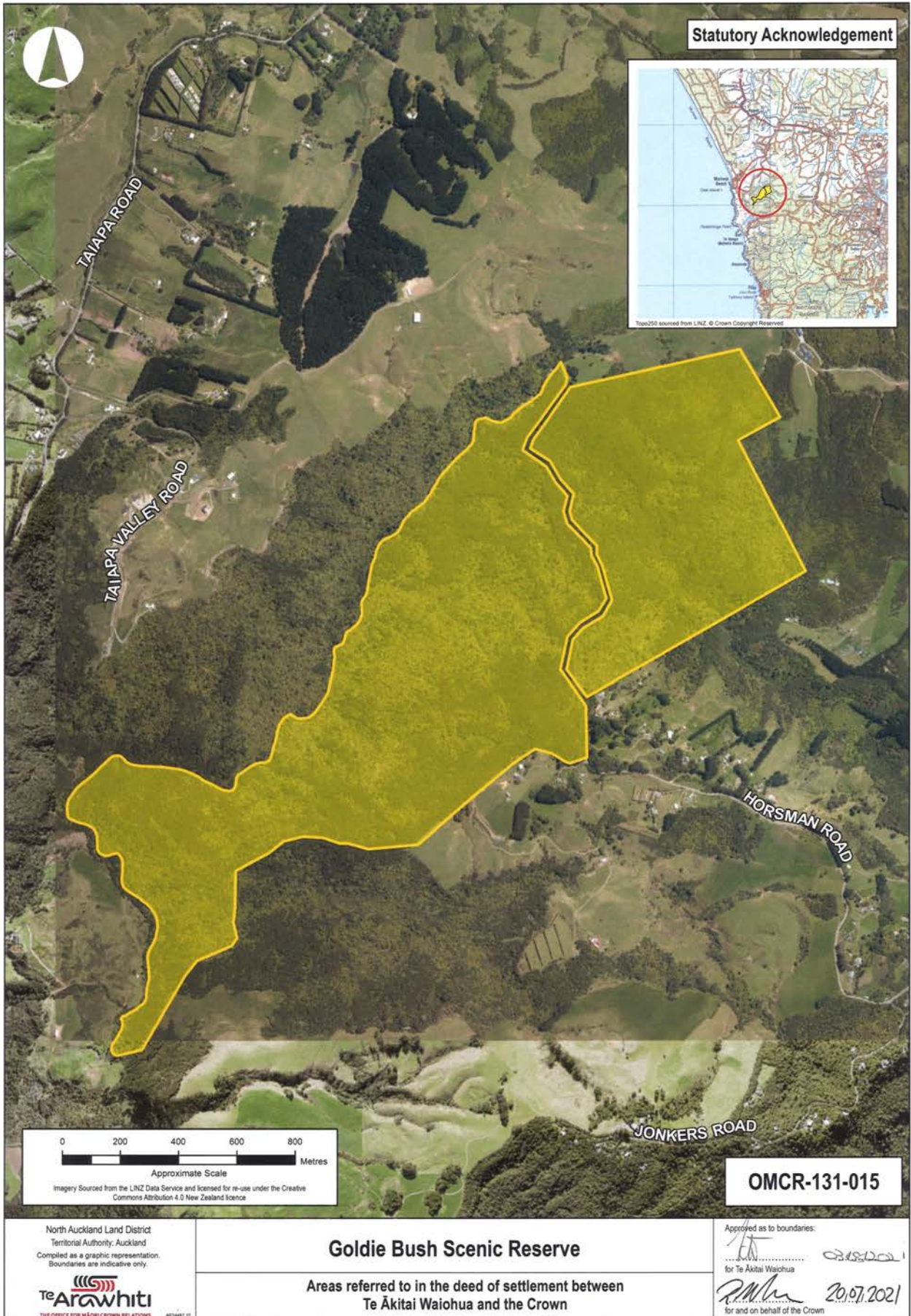
Areas referred to in the deed of settlement between
Te Ākitai Waiohūa and the Crown

Approved as to boundaries:

[Signature]
for Te Ākitai Waiohūa

[Signature] 20.07.2021
for and on behalf of the Crown

**ATTACHMENTS
2: DEED PLANS**



0 200 400 600 800
Metres
Approximate Scale
Imagery Sourced from the LINZ Data Service and licensed for re-use under the Creative Commons Attribution 4.0 New Zealand licence

OMCR-131-015

North Auckland Land District
Territorial Authority: Auckland
Compiled as a graphic representation.
Boundaries are indicative only.
Te Arawhiti
THE OFFICE FOR MĀORI CROWN RELATIONS
HEMŪREKI

Goldie Bush Scenic Reserve
Areas referred to in the deed of settlement between
Te Ākitai Waiohūa and the Crown

Approved as to boundaries:
for Te Ākitai Waiohūa
for and on behalf of the Crown
20.07.2021

**ATTACHMENTS
2: DEED PLANS**



North Auckland Land District
Territorial Authority, Auckland
Compiled as a graphic representation.
Boundaries are indicative only.

Te Arawhiti
THE OFFICE FOR MĀORI CROWN RELATIONS

Kirikiri

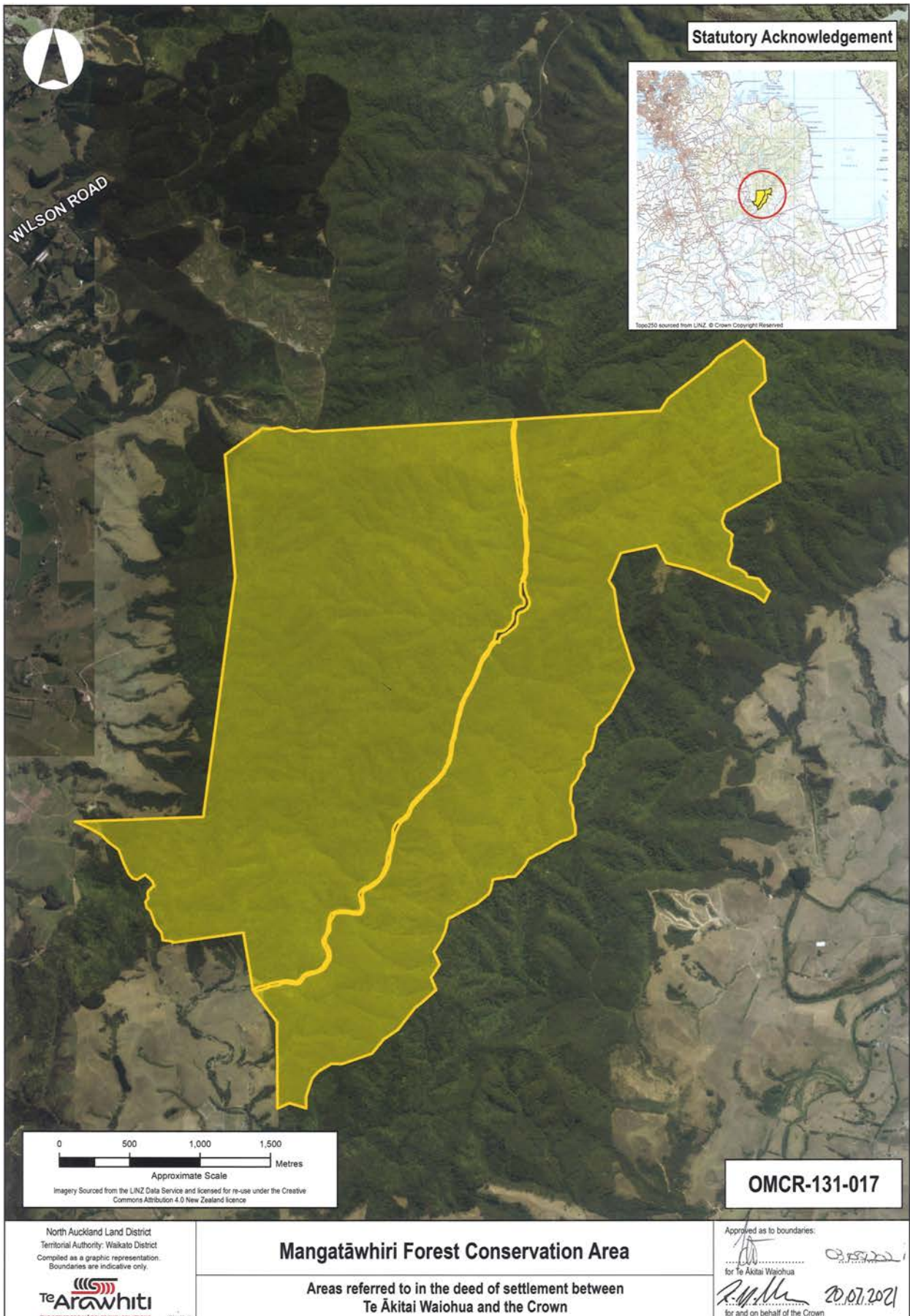
Areas referred to in the deed of settlement between
Te Ākitai Waiohūa and the Crown

Approved as to boundaries:

[Signature] 09.07.2021
for Te Ākitai Waiohūa

[Signature] 20.07.2021
for and on behalf of the Crown

**ATTACHMENTS
2: DEED PLANS**



**ATTACHMENTS
2: DEED PLANS**



0 10 20 30
Metres
Approximate Scale
Imagery Sourced from the LINZ Data Service and licensed for re-use under the Creative Commons Attribution 4.0 New Zealand licence

OMCR-131-018

North Auckland Land District
Territorial Authority, Auckland
Compiled as a graphic representation.
Boundaries are indicative only.

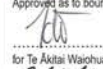



THE OFFICE FOR MĀORI CROWN RELATIONS

Mangere Conservation Area

Areas referred to in the deed of settlement between
Te Ākitai Waiohūa and the Crown

Approved as to boundaries:

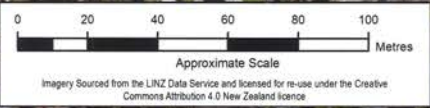



for Te Ākitai Waiohūa
20.07.2021
for and on behalf of the Crown


**ATTACHMENTS
2: DEED PLANS**



Statutory Acknowledgement



OMCR-131-019

<p>North Auckland Land District Territorial Authority: Auckland Compiled as a graphic representation. Boundaries are indicative only.</p>  <p>THE OFFICE FOR MĀORI CROWN RELATIONS</p>	<p>Maungapikitia area</p> <p>Areas referred to in the deed of settlement between Te Ākitai Waiohua and the Crown</p>	<p>Approved as to boundaries:</p> <p><i>[Signature]</i> <i>[Signature]</i> for Te Ākitai Waiohua <i>[Signature]</i> 20.07.2021 for and on behalf of the Crown</p>
---	---	---

**ATTACHMENTS
2: DEED PLANS**



North Auckland Land District
Territorial Authority, Auckland
Compiled as a graphic representation.
Boundaries are indicative only.

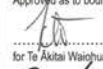


THE OFFICE FOR MĀORI CROWN RELATIONS


Matukutūreia / McLaughlins Mountain area

Areas referred to in the deed of settlement between
Te Ākitai Waiohūa and the Crown

Approved as to boundaries:



for Te Ākitai Waiohūa



20.07.2021
for and on behalf of the Crown

**ATTACHMENTS
2: DEED PLANS**



0 50 100 150 200 250
Metres
Approximate Scale
Imagery Sourced from the LINZ Data Service and licensed for re-use under the Creative Commons Attribution 4.0 New Zealand licence

OMCR-131-021

North Auckland Land District
Territorial Authority, Auckland
Compiled as a graphic representation.
Boundaries are indicative only.
Te Arawhiti
THE OFFICE FOR MĀORI CROWN RELATIONS

Meola Creek Quarry Reserve

Areas referred to in the deed of settlement between
Te Ākitai Waiohūa and the Crown

Approved as to boundaries:
for Te Ākitai Waiohūa
for and on behalf of the Crown
20.07.2021

**ATTACHMENTS
2: DEED PLANS**



North Auckland Land District
Territorial Authority: Auckland
Compiled as a graphic representation.
Boundaries are indicative only.

Te Arawhiti
THE OFFICE FOR MĀŌHĪ CROWN RELATIONS

Mutukaroa / Hamlin Hill

Areas referred to in the deed of settlement between
Te Ākitai Waiohūa and the Crown

Approved as to boundaries:

[Signature]
for Te Ākitai Waiohūa

[Signature] 20.07.2021
for and on behalf of the Crown

**ATTACHMENTS
2: DEED PLANS**



0 50 100 150 200 250
Metres
Approximate Scale
Imagery Sourced from the LINZ Data Service and licensed for re-use under the Creative Commons Attribution 4.0 New Zealand licence

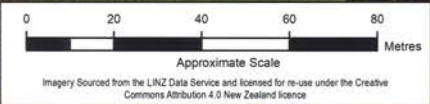
OMCR-131-023

North Auckland Land District
Territorial Authority: Auckland
Compiled as a graphic representation.
Boundaries are indicative only.
Te Arawhiti
THE OFFICE FOR MĀORI CROWN RELATIONS

Ōtuataua Stonefields Reserve area
Areas referred to in the deed of settlement between
Te Ākitai Waiohūa and the Crown

Approved as to boundaries:
for Te Ākitai Waiohūa
for and on behalf of the Crown

**ATTACHMENTS
2: DEED PLANS**



OMCR-131-024

North Auckland Land District
Territorial Authority, Auckland
Compiled as a graphic representation.
Boundaries are indicative only.



THE OFFICE FOR MĀORI CROWN RELATIONS

Paerata Scenic Reserve

Areas referred to in the deed of settlement between
Te Ākitai Waiohūa and the Crown

Approved as to boundaries:

[Signature] 02.15.2021
for Te Ākitai Waiohūa

[Signature] 20.07.2021
for and on behalf of the Crown

**ATTACHMENTS
2: DEED PLANS**



0 50 100 150 200 250
Metres
Approximate Scale
Imagery Sourced from the LINZ Data Service and licensed for re-use under the Creative Commons Attribution 4.0 New Zealand licence

OMCR-131-025

North Auckland Land District
Territorial Authority, Auckland
Compiled as a graphic representation.
Boundaries are indicative only.
Te Arawhiti
THE OFFICE FOR MĀORI CROWN RELATIONS
NEZ4462.02

Paparimu Conservation Area
Areas referred to in the deed of settlement between
Te Ākitai Waiohūa and the Crown

Approved as to boundaries:
for Te Ākitai Waiohūa 03.05.2021
for and on behalf of the Crown 20.07.2021

**ATTACHMENTS
2: DEED PLANS**



North Auckland Land District
Territorial Authority: Auckland
Compiled as a graphic representation.
Boundaries are indicative only.

Te Arawhiti
THE OFFICE FOR MĀORI CROWN RELATIONS

Raventhorpe Conservation Area

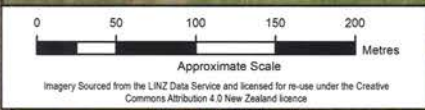
Areas referred to in the deed of settlement between
Te Ākitai Waiohūa and the Crown

Approved as to boundaries:

[Signature] 20.07.2021
for Te Ākitai Waiohūa

[Signature] 20.07.2021
for and on behalf of the Crown

**ATTACHMENTS
2: DEED PLANS**



OMCR-131-027

North Auckland Land District
Territorial Authority: Auckland
Compiled as a graphic representation.
Boundaries are indicative only.



THE OFFICE FOR MĀŌHĪ: CROWN RELATIONS

Raventhorpe Scenic Reserve

Areas referred to in the deed of settlement between
Te Ākitai Waiohū and the Crown

Approved as to boundaries:

[Signature] *[Signature]*
for Te Ākitai Waiohū
[Signature] 20.07.2021
for and on behalf of the Crown

**ATTACHMENTS
2: DEED PLANS**



**ATTACHMENTS
2: DEED PLANS**




**ATTACHMENTS
2: DEED PLANS**



0 10 20 30 40
Metres
Approximate Scale
Imagery Sourced from the LINZ Data Service and licensed for re-use under the Creative Commons Attribution 4.0 New Zealand licence

OMCR-131-030

<p>North Auckland Land District Territorial Authority: Auckland Compiled as a graphic representation. Boundaries are indicative only.</p>  <p>THE OFFICE FOR MĀORI CROWN RELATIONS</p>	<p>Rose Garden Reserve</p> <p>Areas referred to in the deed of settlement between Te Ākitai Waiohau and the Crown</p>	<p>Approved as to boundaries:</p> <p><i>[Signature]</i> 03.15.2021 for Te Ākitai Waiohau</p> <p><i>[Signature]</i> 20.07.2021 for and on behalf of the Crown</p>
---	--	--

**ATTACHMENTS
2: DEED PLANS**



North Auckland Land District
Territorial Authority: Auckland
Compiled as a graphic representation.
Boundaries are indicative only.

Te Arawhiti
THE OFFICE FOR MĀORI-CROWN RELATIONS

St Johns Redoubt Historic Reserve

Areas referred to in the deed of settlement between
Te Ākitai Waiohūa and the Crown

Approved as to boundaries:

[Signature] 20.07.2021
for Te Ākitai Waiohūa

[Signature] 20.07.2021
for and on behalf of the Crown

**ATTACHMENTS
2: DEED PLANS**



North Auckland Land District
Territorial Authority: Waikato District
Compiled as a graphic representation.
Boundaries are indicative only.

Te Arowhiti
THE OFFICE FOR MĀORI-CROWN RELATIONS

Te Ia

Areas referred to in the deed of settlement between
Te Ākitai Waiohūa and the Crown

Approved as to boundaries:

[Signature] 03/05/2021
for Te Ākitai Waiohūa


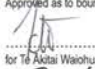

[Signature] 20.07.2021
for and on behalf of the Crown

**ATTACHMENTS
2: DEED PLANS**



0 50 100 150 200 250
Metres
Approximate Scale
Imagery Sourced from the LINZ Data Service and licensed for re-use under the Creative Commons Attribution 4.0 New Zealand licence

OMCR-131-033

<p>North Auckland Land District Territorial Authority: Auckland Compiled as a graphic representation. Boundaries are indicative only.</p>  <p>THE OFFICE FOR MĀORI-CROWN RELATIONS</p>	<p>Te Maketu Historic Reserve</p> <p>Areas referred to in the deed of settlement between Te Ākitai Waiohūa and the Crown</p>	<p>Approved as to boundaries:</p>  <p>for Te Ākitai Waiohūa</p>  <p>for and on behalf of the Crown</p> <p>20.07.2021</p>
---	---	--

**ATTACHMENTS
2: DEED PLANS**



0 10 20 30 40
Metres
Approximate Scale
Imagery Sourced from the LINZ Data Service and licensed for re-use under the Creative Commons Attribution 4.0 New Zealand licence

Statutory Acknowledgement



Thorne Bay

MINNEHAHA AVENUE

OMCR-131-034

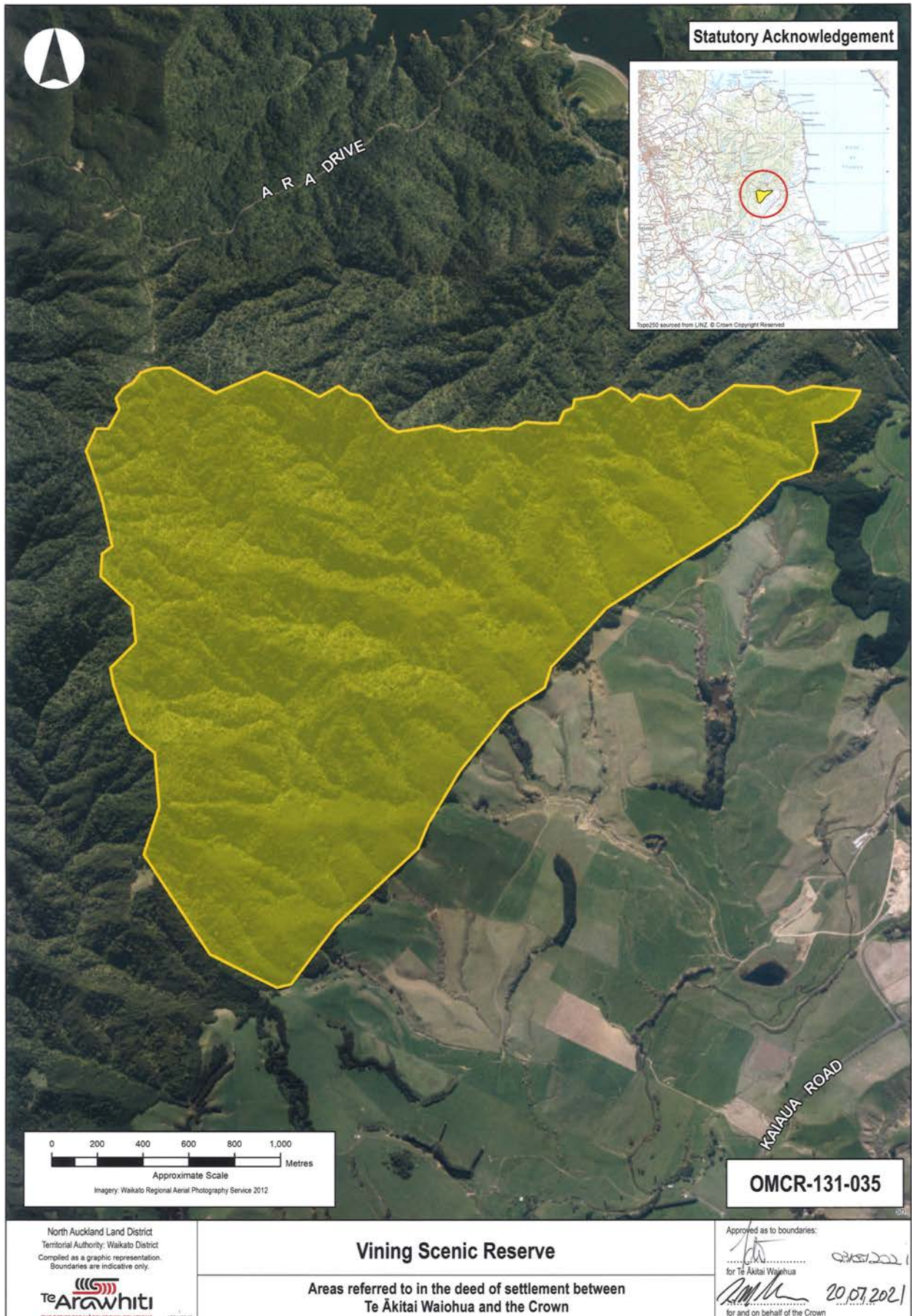
North Auckland Land District
Territorial Authority: Auckland
Compiled as a graphic representation.
Boundaries are indicative only.
Te Arowhiti
THE OFFICE FOR MĀŌRI-CROWN RELATIONS

Thorne Bay Recreation Reserve

Areas referred to in the deed of settlement between
Te Ākitai Waiohūa and the Crown

Approved as to boundaries:
for Te Ākitai Waiohūa
for and on behalf of the Crown
20.07.2021

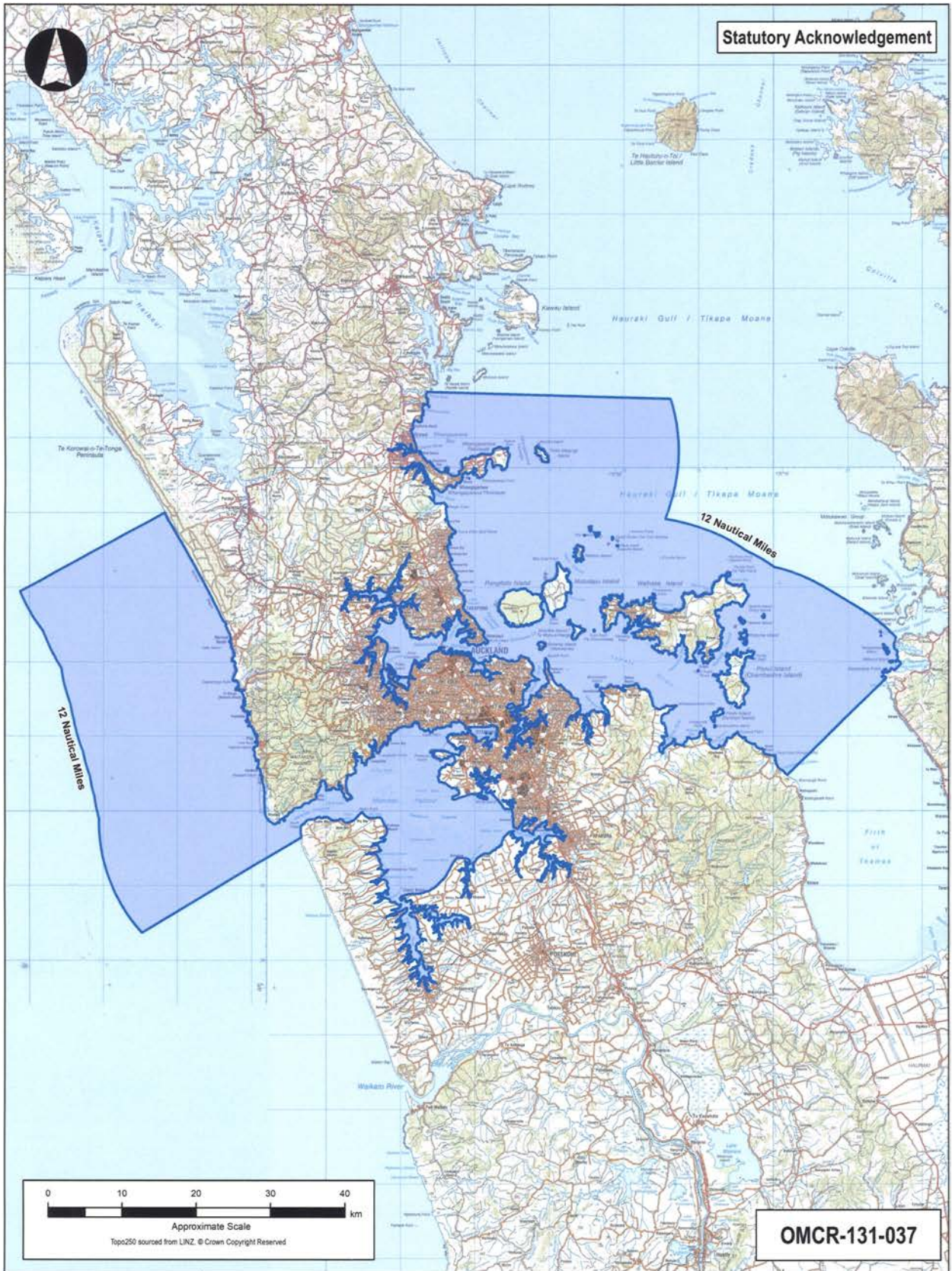
**ATTACHMENTS
2: DEED PLANS**



**ATTACHMENTS
2: DEED PLANS**



**ATTACHMENTS
2: DEED PLANS**



North Auckland and South Auckland Land Districts
 Territorial Authority: Auckland Council
 and Waikato Regional Council
 Compiled as a graphic representation.
 Boundaries are indicative only.

Te Arawhiti
 THE OFFICE FOR MĀORI CROWN RELATIONS

Coastal statutory acknowledgement area

Areas referred to in the deed of settlement between
 Te Ākitai Waiohūa and the Crown

Approved as to boundaries:

[Signature] 20.07.2021
 for Te Ākitai Waiohūa

[Signature] 20.07.2021
 for and on behalf of the Crown

ATTACHMENTS

3. DRAFT SETTLEMENT BILL

ATTACHMENTS

3: DRAFT SETTLEMENT BILL