

NGĀTI TUWHARETOA (BAY OF PLENTY)

and

HER MAJESTY THE QUEEN

in right of New Zealand

DEED OF SETTLEMENT OF THE
HISTORICAL CLAIMS OF
NGĀTI TUWHARETOA
(BAY OF PLENTY):
SO PLANS

6 June 2003

and DIM?

THIS is the bundle of SO Plans prepared for the purposes of and that form part of, and are to be read with, the Deed of Settlement of the Historical Claims of Ngāti Tuwharetoa (Bay of Plenty) entered into between Ngāti Tuwharetoa (Bay of Plenty) and the Crown on 6 June 2003

SIGNED for and on behalf of
NGĀTI TUWHARETOA (BAY OF PLENTY)
by the Mandated Signatories


Rae Beverley Adlam


The Reverend Canon Robert David Schuster


Tai Tukiwaho Te Riini


Ani Te Waikaretu Wickliffe

In the presence of:


Name: Mita Karami

Occupation: M.P.

Address: Tauranga

J. H. Karami

SIGNED for and on behalf of
HER MAJESTY THE QUEEN in right
of New Zealand by the Minister in Charge
of Treaty of Waitangi Negotiations

) 
)
)
)
)
) Honourable Margaret Wilson

In the presence of:



Name: Mita Karami

Occupation: M.P.

Address: Tauranga.

Vest Fee Simple with Reserve Status

Allotment 273 Western Whakatane Recreation Reserve

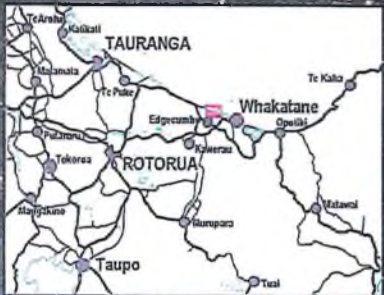
Allotment 272



CJ, JR & RM Gordon

JR & RM Gordon

CA Goldsmith
MA Law



Te Wahieroa

Area	Description
10.0 ha	approximately, being Part Allotments 272 and 273 Rangitaiki Parish. Part Gazette Notice H.024770. Subject to survey.

THORNTON RD

WALKER RD

Approximate scale



South Auckland Land District
Territorial authority :
Whakatane District
Date of photography Sept 2001
Boundaries are indicative only.

SINCLAIR KNIGHT MERZ

Te Wahieroa

**Areas referred to in the Deed of Settlement between
Ngati Tuwharetoa (Bay of Plenty) and the Crown**

Approved as to boundaries:
R. Mitchell 6.6.03
 for and on behalf of Ngati Tuwharetoa (Bay of Plenty)
[Signature] 6.6.03
 for and on behalf of the Crown

SO 61715



ROTOMA FOREST

Vest Fee Simple



Te Atua Reretahi

Area	Description
10.0 ha	approximately, being Part Allotment 889 Matata Parish. Part New Zealand Gazette 1920 page 2107. Subject to survey.

0 1000 metres

Approximate scale

Sourced from Land Information NZ data. Crown Copyright Reserved.



South Auckland Land District
 Territorial authority :
 Whakatane District
 Date of photography Sept 2001
 Boundaries are indicative only.

SINCLAIR KNIGHT MERZ

WR00424.0

Te Atua Reretahi

**Areas referred to in the Deed of Settlement between
 Ngati Tuwharetoa (Bay of Plenty) and the Crown**

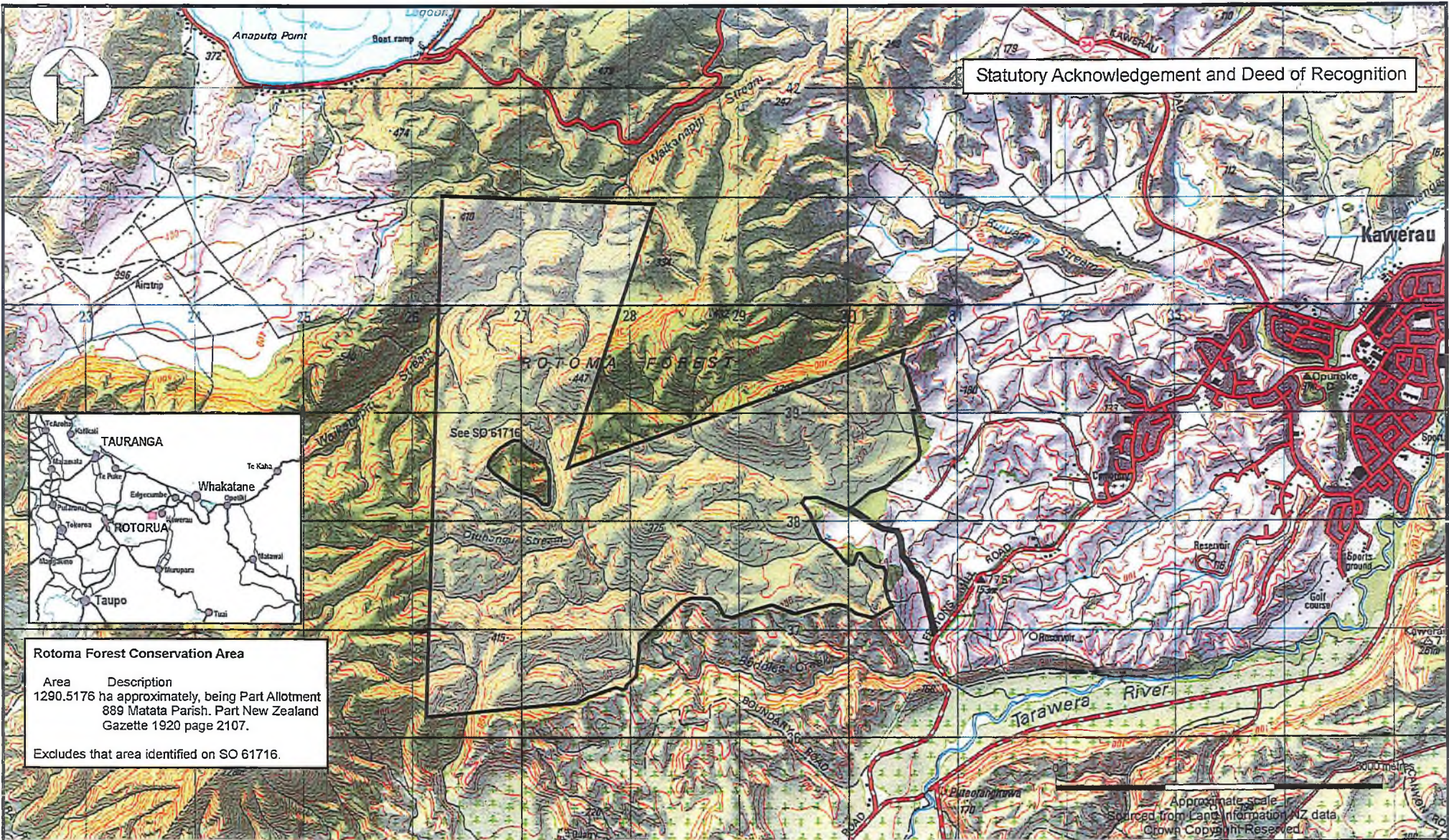
Approved as to boundaries:

R. Miskell 6.6.03
 for and on behalf of Ngati Tuwharetoa (Bay of Plenty)

[Signature] 6.6.03
 for and on behalf of the Crown

SO 61716

Statutory Acknowledgement and Deed of Recognition



Rotoma Forest Conservation Area

Area	Description
1290.5176 ha approximately, being Part Allotment 889 Matata Parish. Part New Zealand Gazette 1920 page 2107.	

Excludes that area identified on SO 61716.



South Auckland Land District
Territorial authorities :
Whakatane District
& Kawerau District
Boundaries are indicative only.
SINCLAIR KNIGHT MERZ

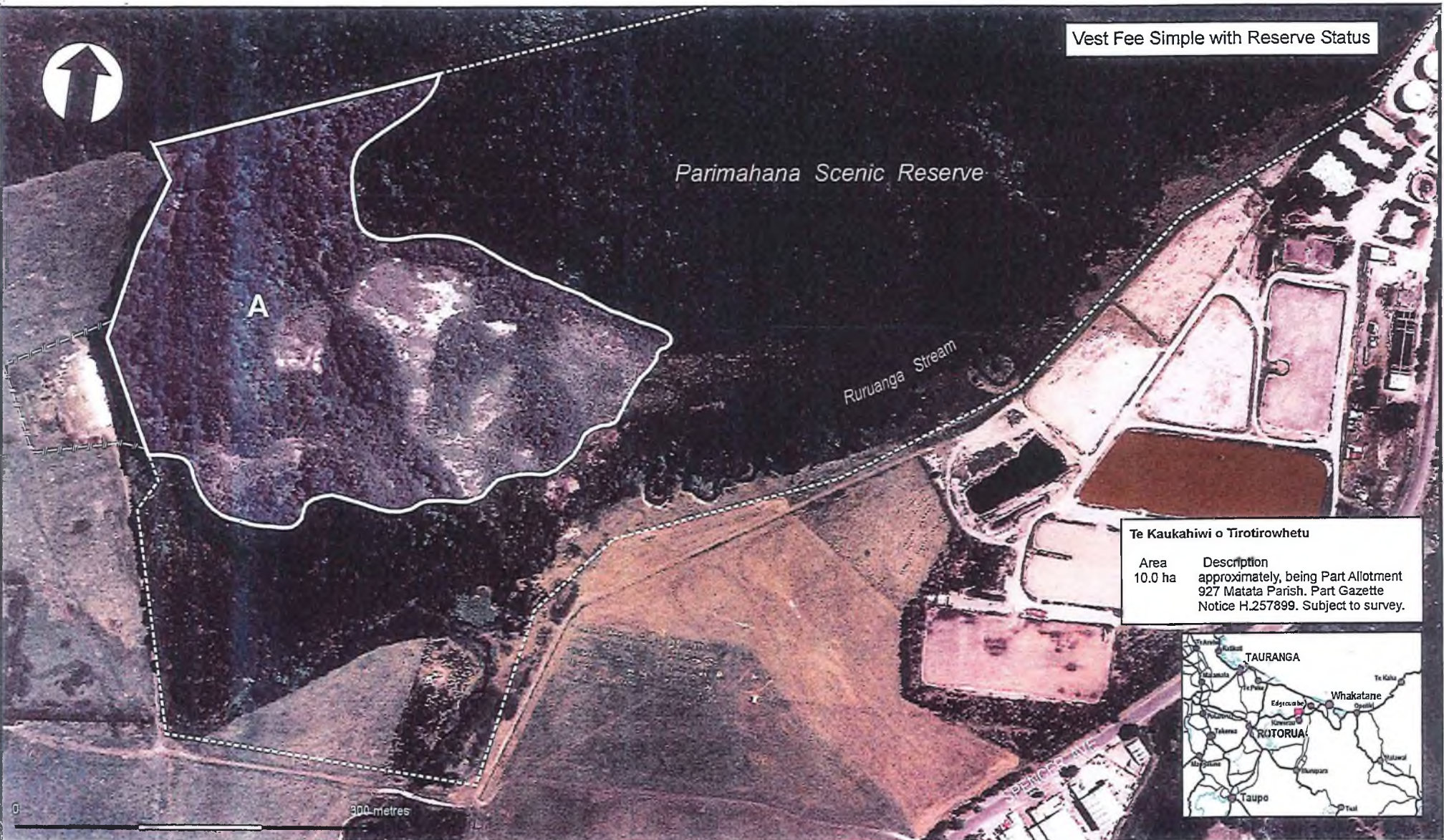
Rotoma Forest Conservation Area

**Areas referred to in the Deed of Settlement between
Ngati Tuwharetoa (Bay of Plenty) and the Crown**

Approved as to boundaries:
R. C. Mitchell 6.1.6.03
for and on behalf of Ngati Tuwharetoa (Bay of Plenty)
K. S. 6.16.1.03
for and on behalf of the Crown

SO 61717

Vest Fee Simple with Reserve Status



Te Kaukahiwi o Tirotirowhetu

Area	Description
10.0 ha	approximately, being Part Allotment 927 Matata Parish. Part Gazette Notice H.257899. Subject to survey.



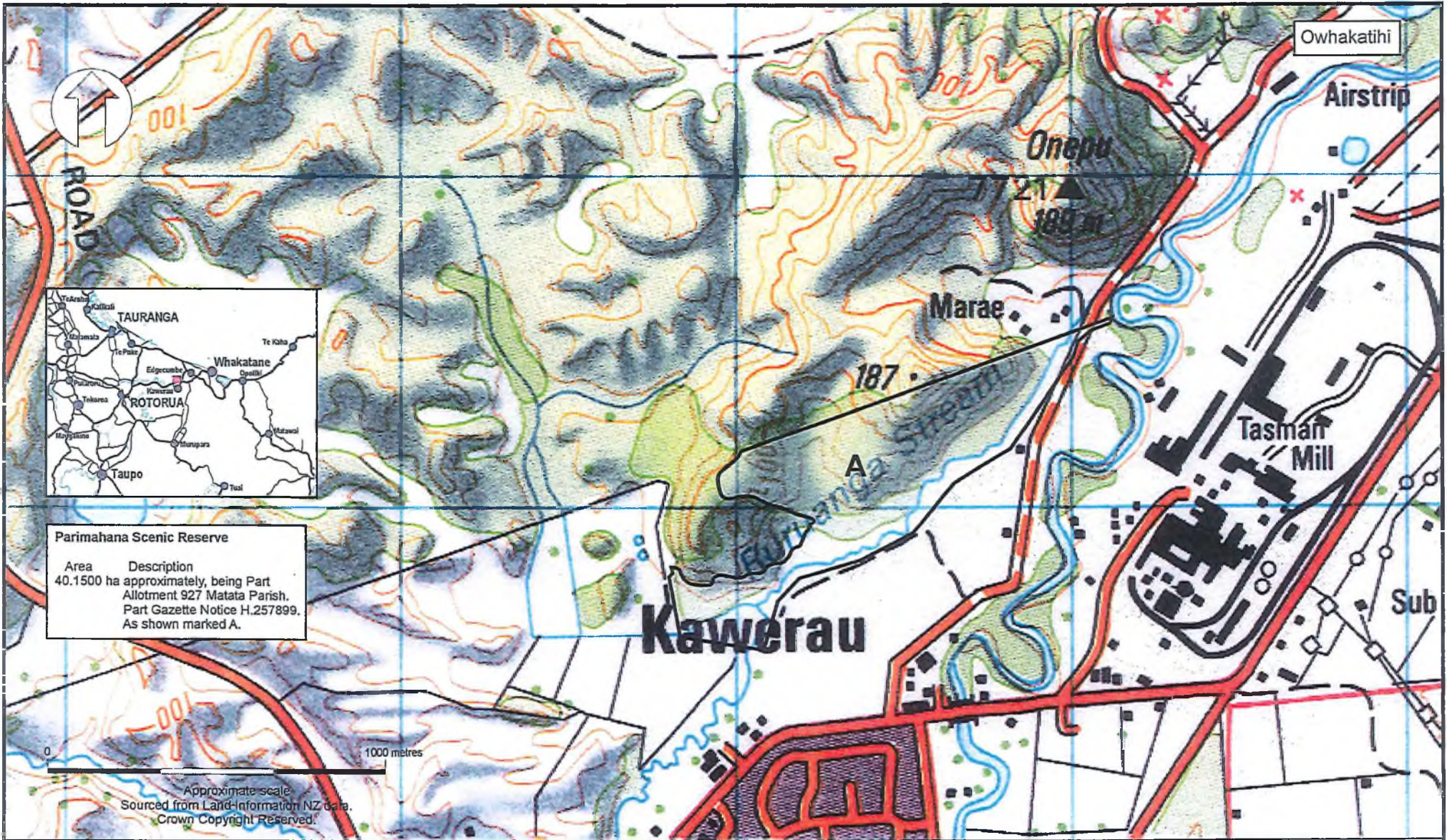

South Auckland Land District
 Territorial authority :
 Kawerau District
 Date of photography Feb 2002
 Boundaries are indicative only.
SINCLAIR KNIGHT MERZ

Te Kaukahiwi o Tirotirowhetu

**Areas referred to in the Deed of Settlement between
 Ngati Tuwharetoa (Bay of Plenty) and the Crown**

Approved as to boundaries:
R. Mitchell 6.6.03
 for and on behalf of Ngati Tuwharetoa (Bay of Plenty)
 6.6.03
 for and on behalf of the Crown

SO 61718




South Auckland Land District
Territorial authority :
Kawerau District
Boundaries are indicative only.

SINCLAIR KNIGHT MERZ

WR00424.0

Parimahana Scenic Reserve

**Areas referred to in the Deed of Settlement between
Ngati Tuwharetoa (Bay of Plenty) and the Crown**

Approved as to boundaries:
R. C. Miskell 6.6.03
 for and on behalf of Ngati Tuwharetoa (Bay of Plenty)

[Signature] 6.6.03
 for and on behalf of the Crown

SO 61719



Vest Fee Simple

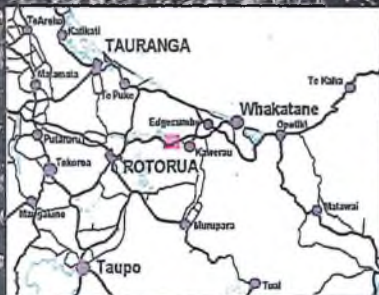
Lake Rotoma Scenic Reserve

Mangaone Scenic Reserve

Mangaone Stream

Iron tube (Otitapu)

Pt Sec 11



Otitapu Lookout

Area	Description
6.0 ha	approximately, being Part Section 11 Block XI Rotoma Survey District. Part New Zealand Gazette 1939 page 311. Subject to survey.



South Auckland Land District
Territorial authority :
Whakatane District
Date of photography Sept 2001
Boundaries are indicative only.

SINCLAIR KNIGHT MERZ

WR00424.0

Otitapu Lookout

Areas referred to in the Deed of Settlement between Ngati Tuwharetoa (Bay of Plenty) and the Crown

Approved as to boundaries:
PC Miskell 6.6.03
for and on behalf of Ngati Tuwharetoa (Bay of Plenty)
W. Jones 6.6.03
for and on behalf of the Crown

SO 61720



Vest Fee Simple with Reserve Status

Matata Scenic Reserve

Allot 833

Matata

Pt Allot 227

Pt Sec 1 BIK VI

Lot 1 DPS 39703

Pt Allo 982

Pt Sec 1 BIK II

A

MANAWHE RD
MATATA RD (SH 2)



Whakapaukorero	
Area	Description
29.9189 ha	approximately, being Part Allotment 982 Matata Parish and Part Section 1 Block II and Part Section 1 Block VI Awaateatua Survey District. Part Gazette Notice H.011708. Subject to survey.
811 m ²	more or less, being Lot 1 DPS 39703. All Transfer H.652435.

Approximate Scale



South Auckland Land District
Territorial authority:
Whakatane District
Date of photography June 1994
Boundaries are indicative only.

SINCLAIR KNIGHT MERZ

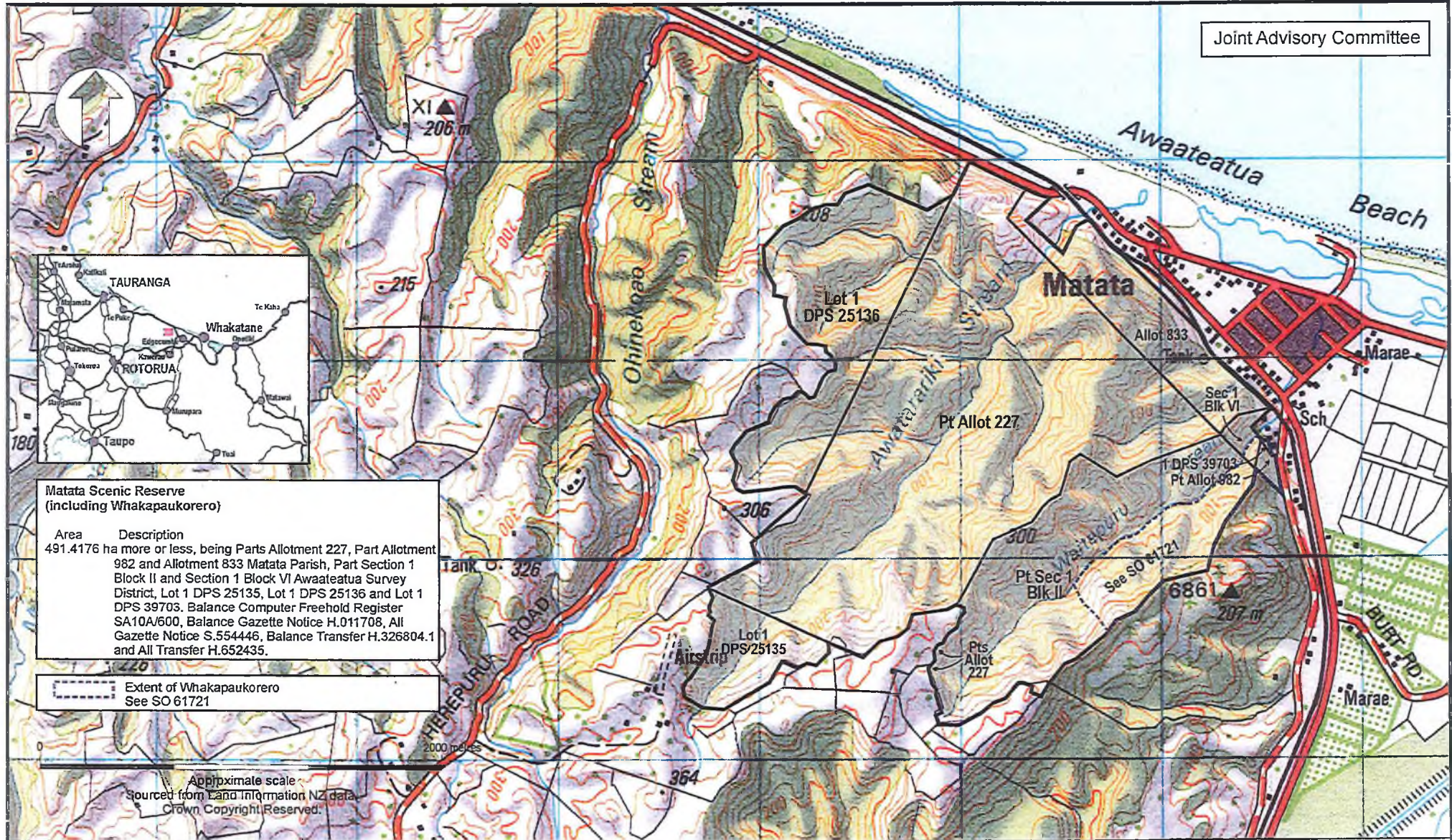
WR00424.C

Whakapaukorero

Areas referred to in the Deed of Settlement between Ngati Tuwharetoa (Bay of Plenty) and the Crown

Approved as to boundaries:
R. Mitchell 6.6.03
 for and on behalf of Ngati Tuwharetoa (Bay of Plenty)
 _____ 6.6.03
 for and on behalf of the Crown

SO 61721



Matata Scenic Reserve (including Whakapaukorero)

Area	Description
491.4176 ha more or less,	being Parts Allotment 227, Part Allotment 982 and Allotment 833 Matata Parish, Part Section 1 Block II and Section 1 Block VI Awaateatua Survey District, Lot 1 DPS 25135, Lot 1 DPS 25136 and Lot 1 DPS 39703. Balance Computer Freehold Register SA10A/600, Balance Gazette Notice H.011708, All Gazette Notice S.554446, Balance Transfer H.326804.1 and All Transfer H.652435.

Extent of Whakapaukorero
See SO 61721

Approximate scale
Sourced from Land Information NZ data
Crown Copyright Reserved.



South Auckland Land District
Territorial authority :
Whakatane District
Boundaries are indicative only.

SINCLAIR KNIGHT MERZ

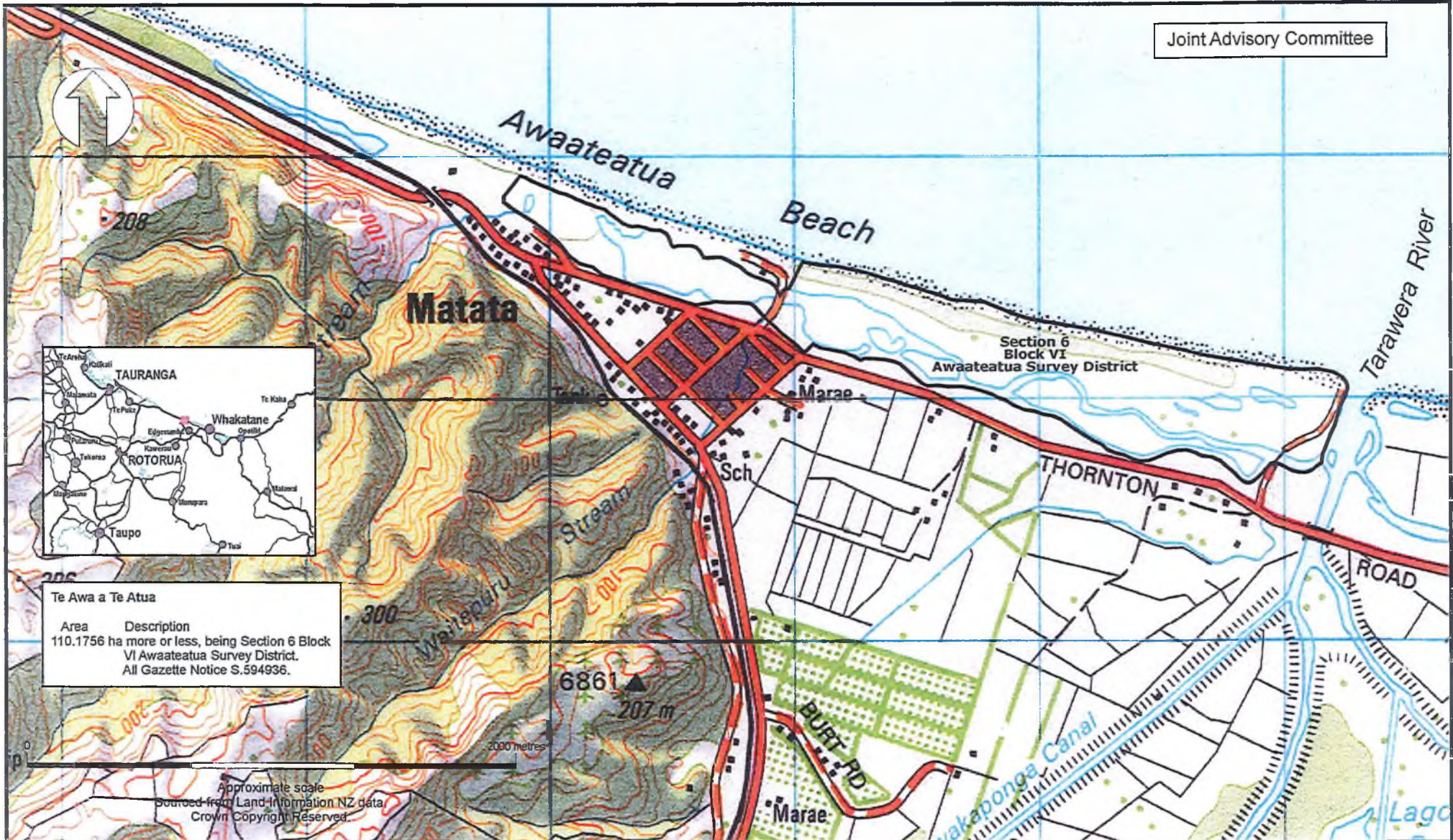
Matata Scenic Reserve (including Whakapaukorero)

Areas referred to in the Deed of Settlement between Ngati Tuwharetoa (Bay of Plenty) and the Crown

Approved as to boundaries:
R. Mitchell 6.1.6.03
 for and on behalf of Ngati Tuwharetoa (Bay of Plenty)
W. H. H. H. 6.1.6.03
 for and on behalf of the Crown

SO 61722

Joint Advisory Committee



Te Awa a Te Atua

Area	Description
110.1756 ha more or less,	being Section 6 Block VI Awaateatua Survey District.
All Gazette Notice S.594936.	

Approximate scale
 Sourced from Land Information NZ data
 Crown Copyright Reserved



South Auckland Land District
 Territorial authority :
 Whakatane District
 Boundaries are indicative only.

SINCLAIR KNIGHT MERZ

WR00424

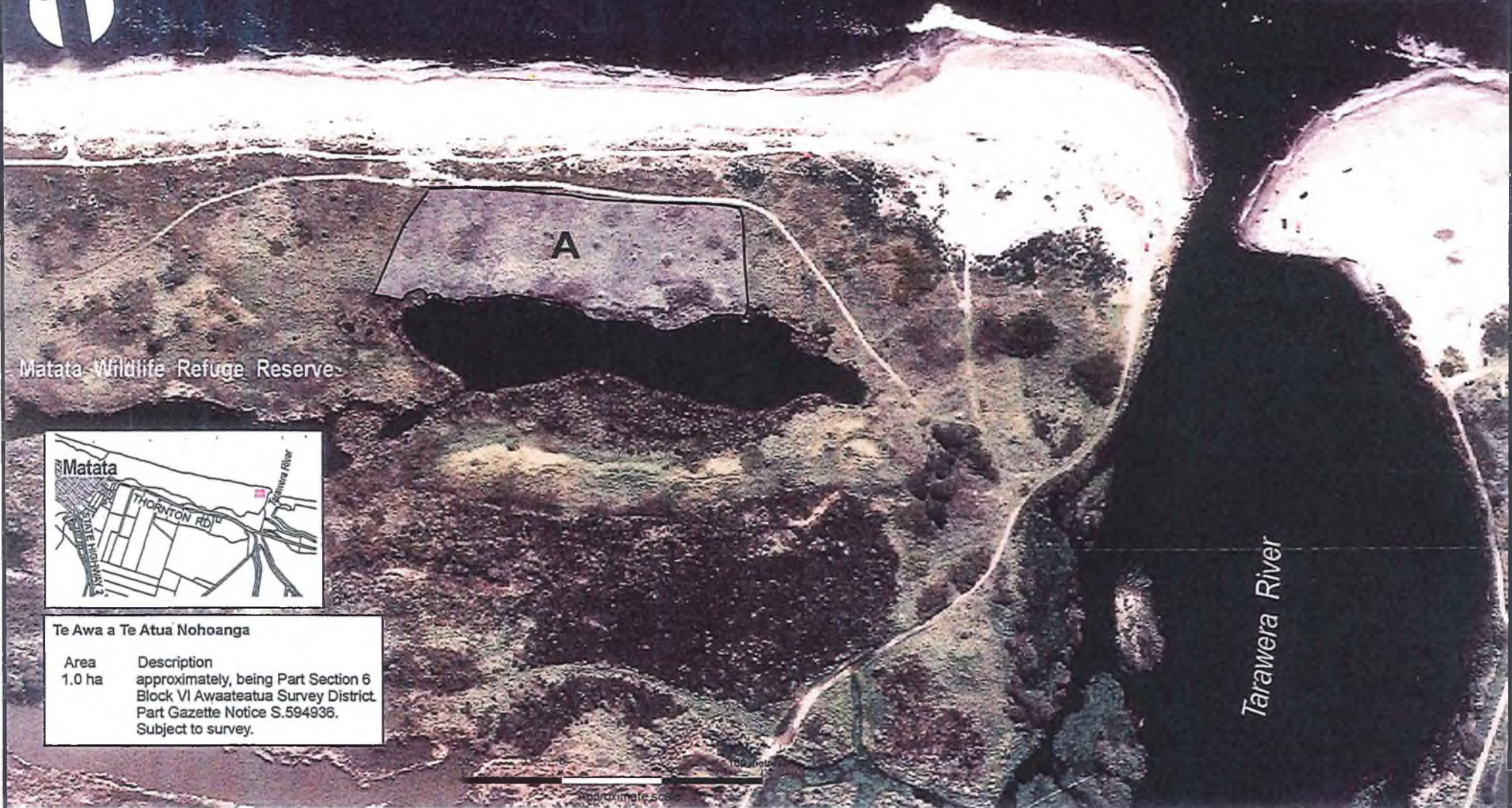
Te Awa a Te Atua

**Areas referred to in the Deed of Settlement between
 Ngati Tuwharetoa (Bay of Plenty) and the Crown**

Approved as to boundaries:
R. Miskell 6.6.03
 for and on behalf of Ngati Tuwharetoa (Bay of Plenty)
[Signature] 6.6.03
 for and on behalf of the Crown

SO 61723

Nohoanga Entitlement



Matata Wildlife Refuge Reserve



Te Awa a Te Atua Nohoanga

Area	Description
1.0 ha	approximately, being Part Section 6 Block VI Awaateatua Survey District Part Gazette Notice S.594936. Subject to survey.

Te Awa a Te Atua Nohoanga

Areas referred to in the Deed of Settlement between Ngati Tuwharetoa (Bay of Plenty) and the Crown



South Auckland Land District
 Territorial authority :
 Whakatane District
 Date of photography Sept 2001
 Boundaries are indicative only.
SINCLAIR KNIGHT MERZ

Approved as to boundaries:
DCMiskell 6.6.03
 for and on behalf of Ngati Tuwharetoa (Bay of Plenty)
 *Kororia* 6.6.03
 for and on behalf of the Crown

SO 61724

Statutory Acknowledgement and Deed of Recognition

STATE HIGHWAY 30

Lake Tamarenuui

HOGG ROAD

SPRING ROAD

THOMPSON ROAD

Tank



Lake Tamarenuui Wildlife Management Reserve
Area Description
16.9019 ha more or less, being Part Allotment 1269 Matata Parish.
Balance Gazette Notice H.038938.1

1000 metres
Approximate scale
Sourced from Land Information NZ data.
Crown Copyright Reserved.



South Auckland Land District
Territorial authority :
Whakatane District
Boundaries are indicative only.

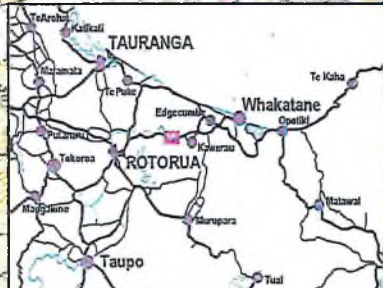
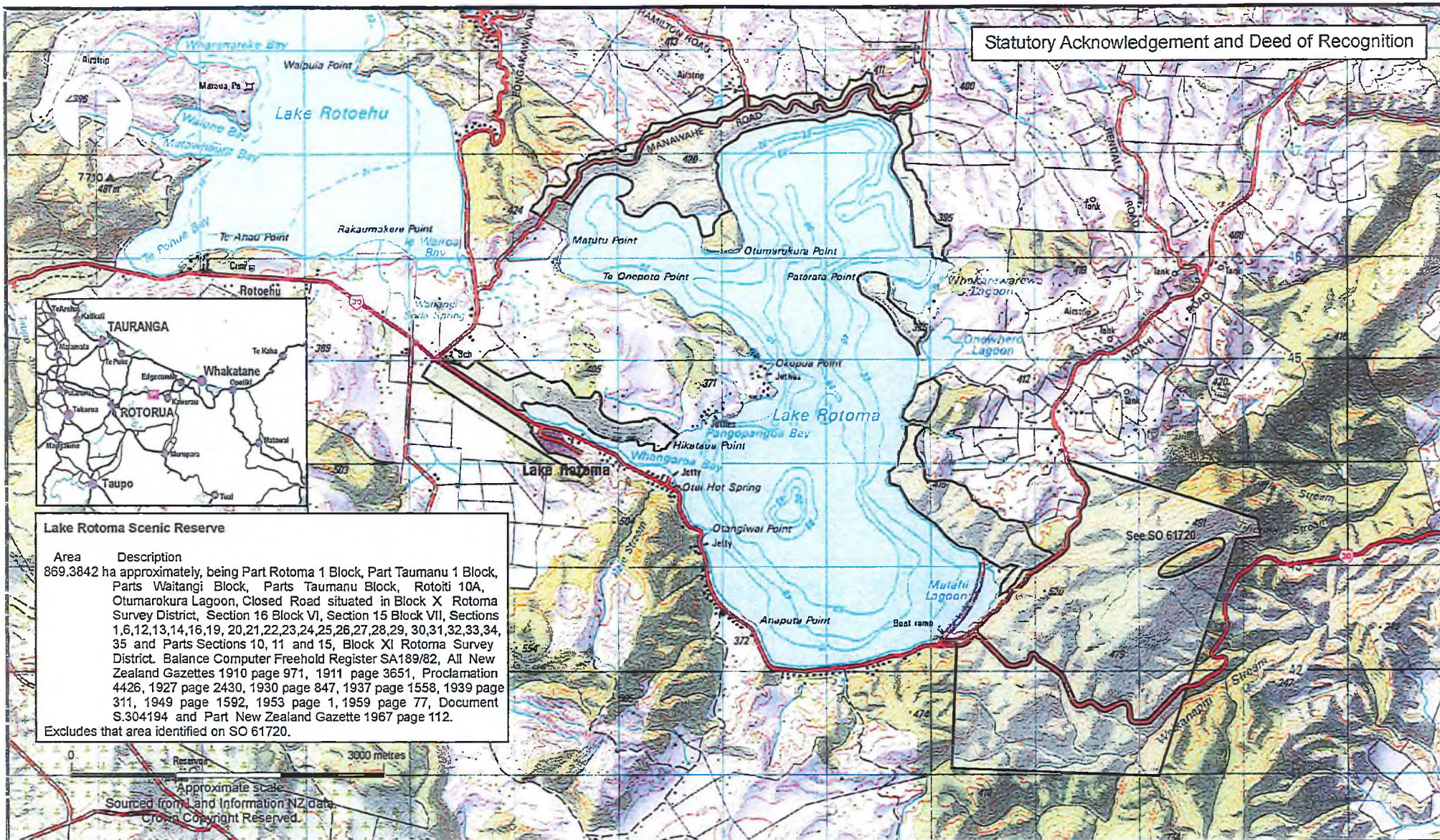
SINCLAIR KNIGHT MERZ

Lake Tamarenuui Wildlife Management Reserve

Areas referred to in the Deed of Settlement between
Ngati Tuwharetoa (Bay of Plenty) and the Crown

Approved as to boundaries:
R. C. Mitchell 6.6.03
for and on behalf of Ngati Tuwharetoa (Bay of Plenty)
Kevin 6.6.03
for and on behalf of the Crown

SO 61727



Lake Rotoma Scenic Reserve

Area Description
 869.3842 ha approximately, being Part Rotoma 1 Block, Part Taumanu 1 Block, Parts Waitangi Block, Parts Taumanu Block, Rotoiti 10A, Otumarokura Lagoon, Closed Road situated in Block X Rotoma Survey District, Section 16 Block VI, Section 15 Block VII, Sections 1,6,12,13,14,16,19, 20,21,22,23,24,25,26,27,28,29, 30,31,32,33,34, 35 and Parts Sections 10, 11 and 15, Block XI Rotoma Survey District. Balance Computer Freehold Register SA189/82, All New Zealand Gazettes 1910 page 971, 1911 page 3651, Proclamation 4426, 1927 page 2430, 1930 page 847, 1937 page 1558, 1939 page 311, 1949 page 1592, 1953 page 1, 1959 page 77, Document S.304194 and Part New Zealand Gazette 1967 page 112.
 Excludes that area identified on SO 61720.

Approximate scale
 Sourced from Land Information NZ data
 Crown Copyright Reserved

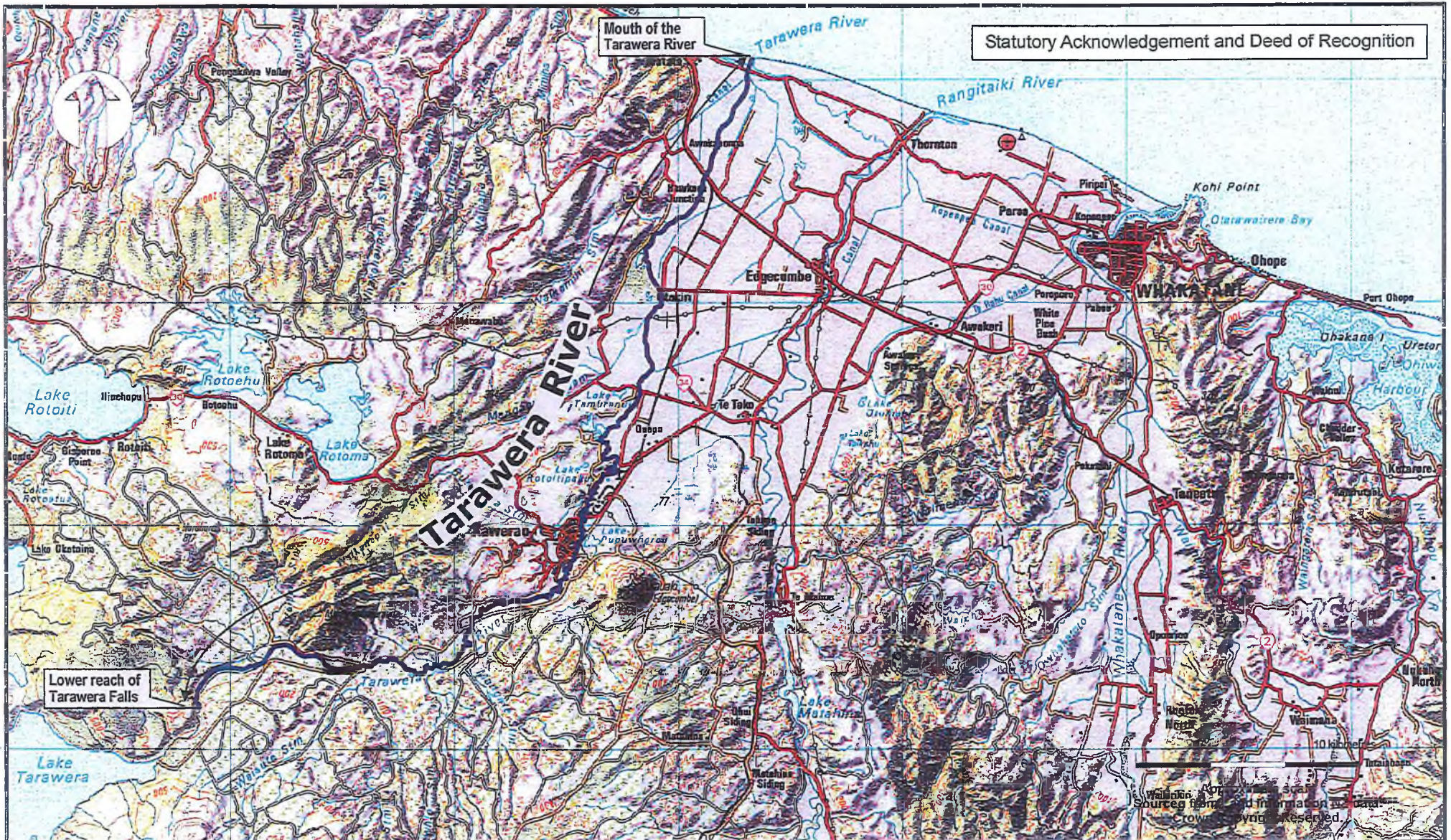


South Auckland Land District
 Territorial authorities :
 Whakatane District
 & Rotorua District
 Boundaries are indicative only.
SINCLAIR KNIGHT MERZ

Lake Rotoma Scenic Reserve

Areas referred to in the Deed of Settlement between Ngati Tuwharetoa (Bay of Plenty) and the Crown

Approved as to boundaries:
RCMiskell 6.6.03
 for and on behalf of Ngati Tuwharetoa (Bay of Plenty)
[Signature] 6.6.03
 for and on behalf of the Crown
SO 61726



South Auckland Land District
 Territorial authorities :
 Whakatane District,
 Kawerau District
 & Rotorua District

SINCLAIR KNIGHT MERZ

VR00424.0

Tarawera River

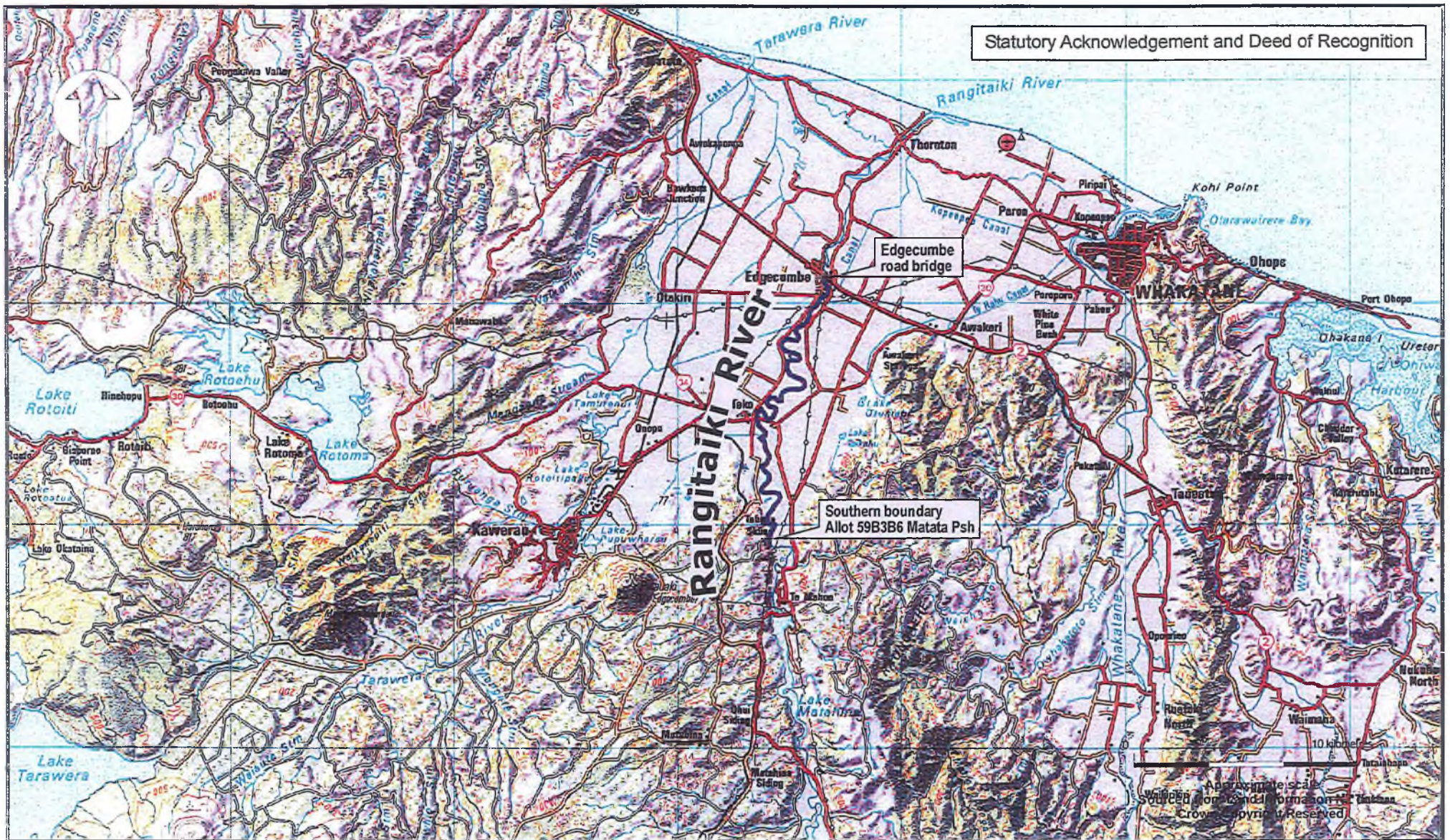
**Areas referred to in the Deed of Settlement between
 Ngati Tuwharetoa (Bay of Plenty) and the Crown**

Approved as to boundaries:

R Whiskell 6.6.03
 for and on behalf of Ngati Tuwharetoa (Bay of Plenty)

W. Brown 6.6.03
 for and on behalf of the Crown

SO 61729



South Auckland Land District
Territorial authority :
Whakatane District

SINCLAIR KNIGHT MERZ

WR0204

Rangitaiki River

**Areas referred to in the Deed of Settlement between
Ngati Tuwharetoa (Bay of Plenty) and the Crown**

Approved as to boundaries:
R. Miskell 6.6.03
for and on behalf of Ngati Tuwharetoa (Bay of Plenty)
W. Miskell 6.6.03
for and on behalf of the Crown

SO 61728



Kawerau Geothermal System
Map showing the inferred location of resistivity boundary zone for Kawerau geothermal field to ca. 500 metre depth (transcribed from Allis et al., 1993, Fig.1).

Approximate scale
Source: Land Information NZ data
Copyright Reserved



South Auckland Land District
Territorial authorities :
Whakatane District
& Kawerau District
Boundaries are indicative only.
SINCLAIR KNIGHT MERZ

Kawerau Geothermal System

Areas referred to in the Deed of Settlement between Ngati Tuwharetoa (Bay of Plenty) and the Crown

Approved as to boundaries:
R. Mitchell 6.6.03
 for and on behalf of Ngati Tuwharetoa (Bay of Plenty)
 *[Signature]* 6.6.03
 for and on behalf of the Crown

SO 61730