

**NGĀTI MARU**  
**and**  
**TE KĀHUI MARU TRUST: TE IWI O MARUWHARANUI**  
**and**  
**THE CROWN**

---

**TE HIRINGA TAKETAKE**  
**DEED OF SETTLEMENT SCHEDULE:**  
**ATTACHMENTS**

---

JM

JS

ATTACHMENTS

---

TABLE OF CONTENTS

1	AREA OF INTEREST AND MARU TAI AO AREA.....	1
2	DEED PLANS.....	3
2.1	STATUTORY AREAS.....	4
2.2	CULTURAL REDRESS PROPERTIES.....	27
3	EXCLUSIVE RFR AREA.....	44
4	OTHER RFR LAND.....	46
5	SHARED RFR LAND.....	57
6	TAHORA BUS STOP PROPERTY.....	58
7	DSP SCHOOL HOUSE SITE DIAGRAMS.....	59
8	DRAFT SETTLEMENT BILL.....	62

W

✓✓

ATTACHMENTS

---

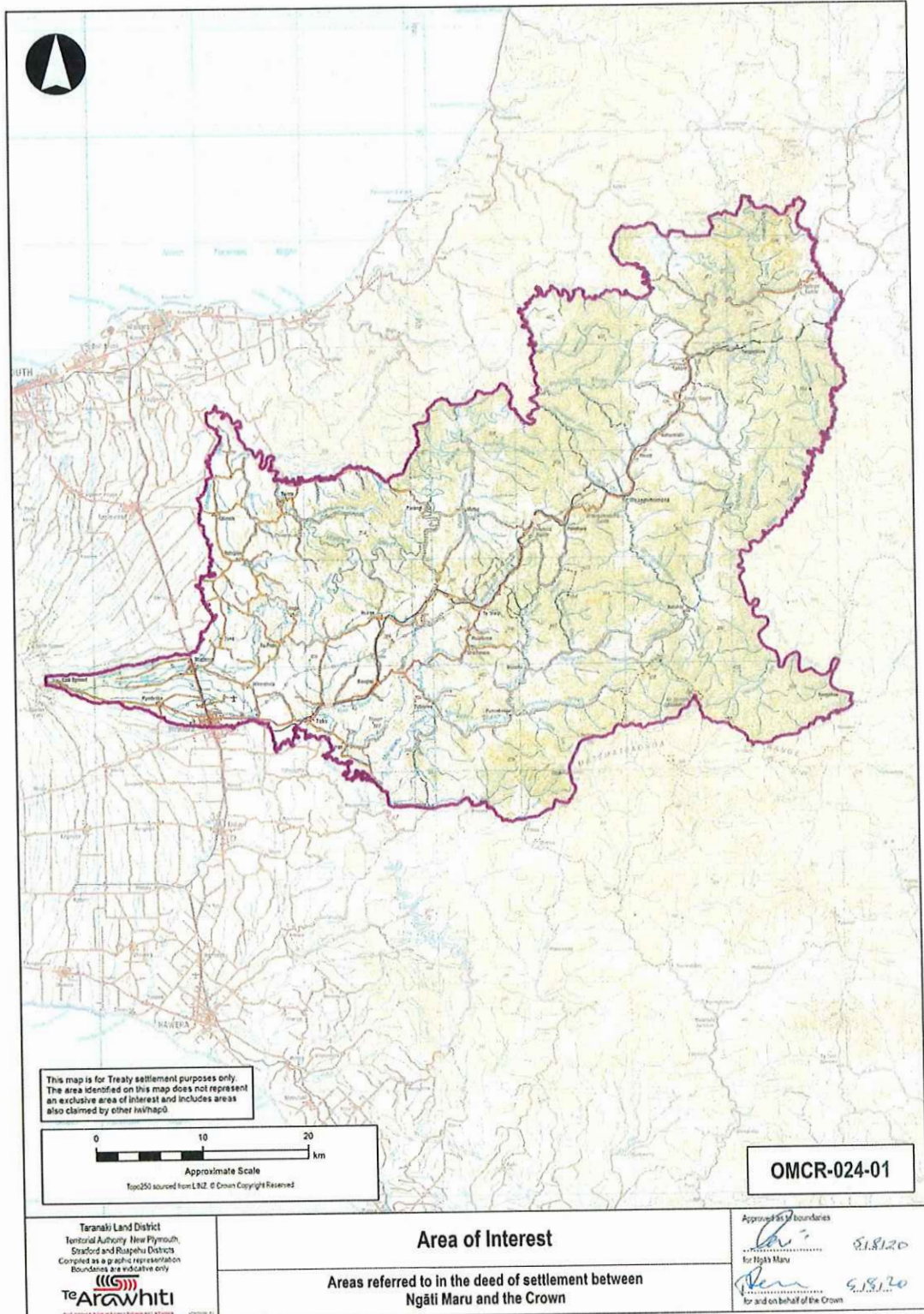
**1 AREA OF INTEREST AND MARU TAI AO AREA**

*mm*

*✓*

ATTACHMENTS

1: AREA OF INTEREST AND MARU TAIAO AREA



VM

✓

ATTACHMENTS

---

2 DEED PLANS

*lm*

*VA*

**ATTACHMENTS**

---

**2: DEED PLANS**

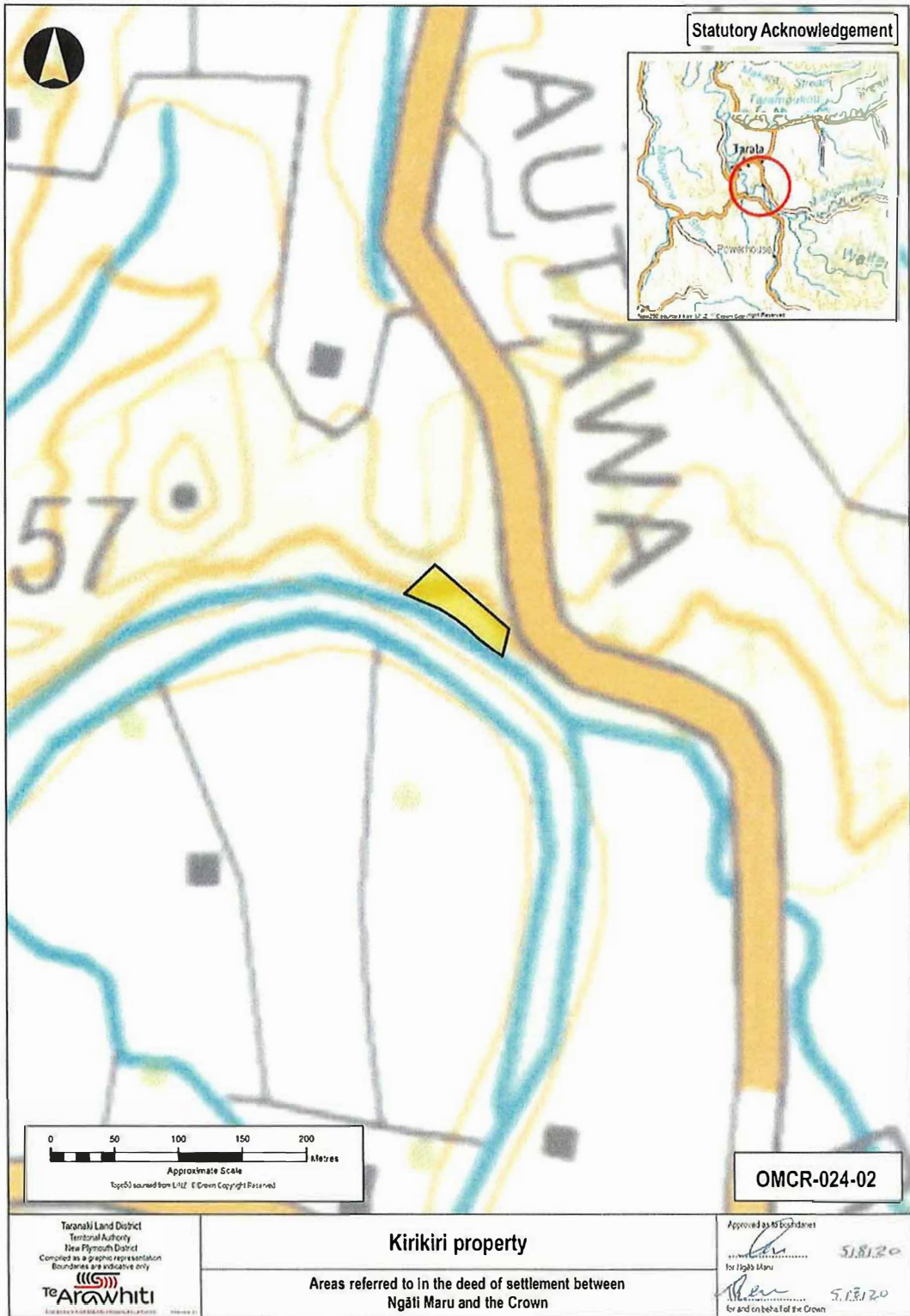
---

**2.1 Statutory areas**

---

ATTACHMENTS

2: DEED PLANS

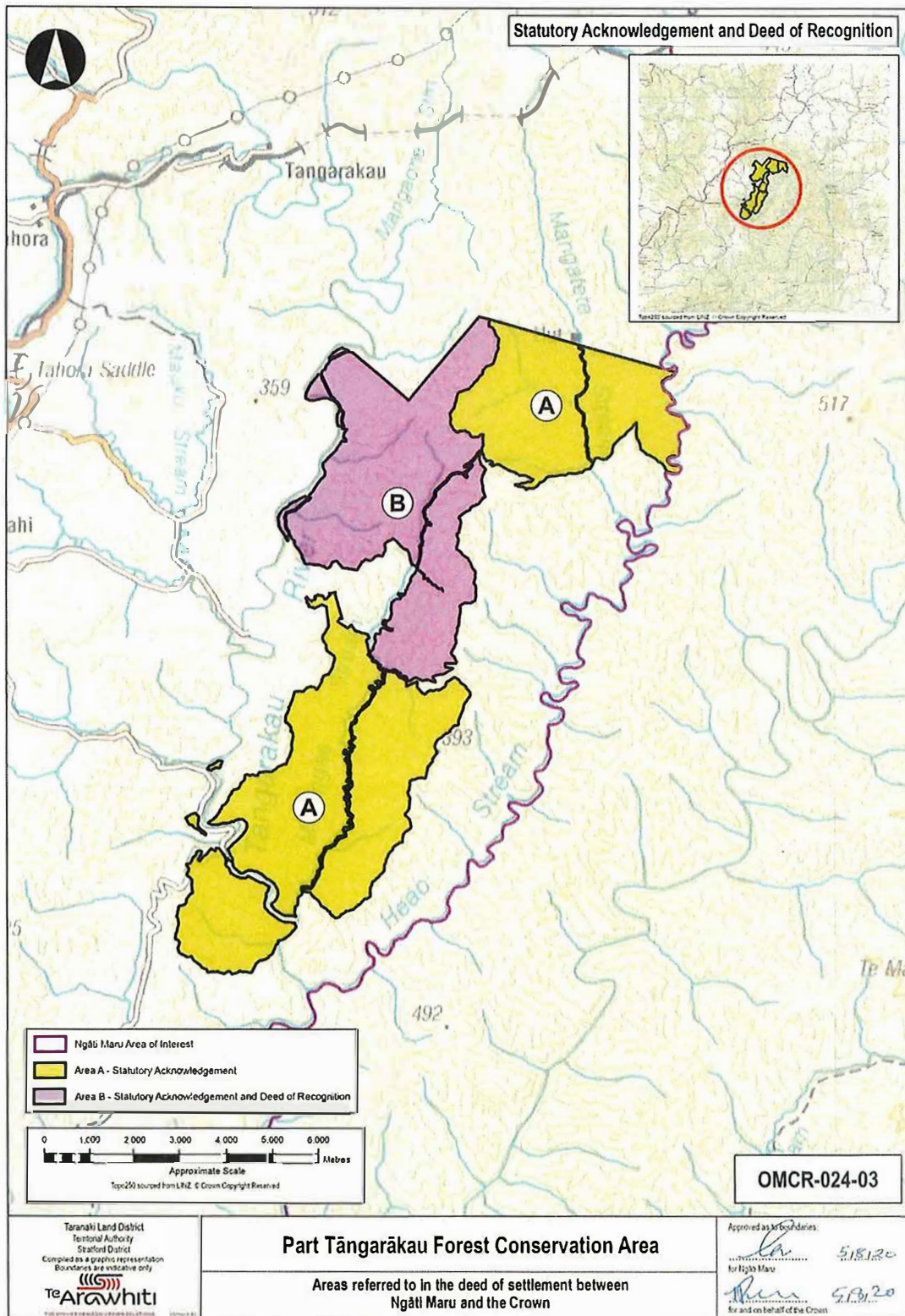


VM



ATTACHMENTS

2: DEED PLANS



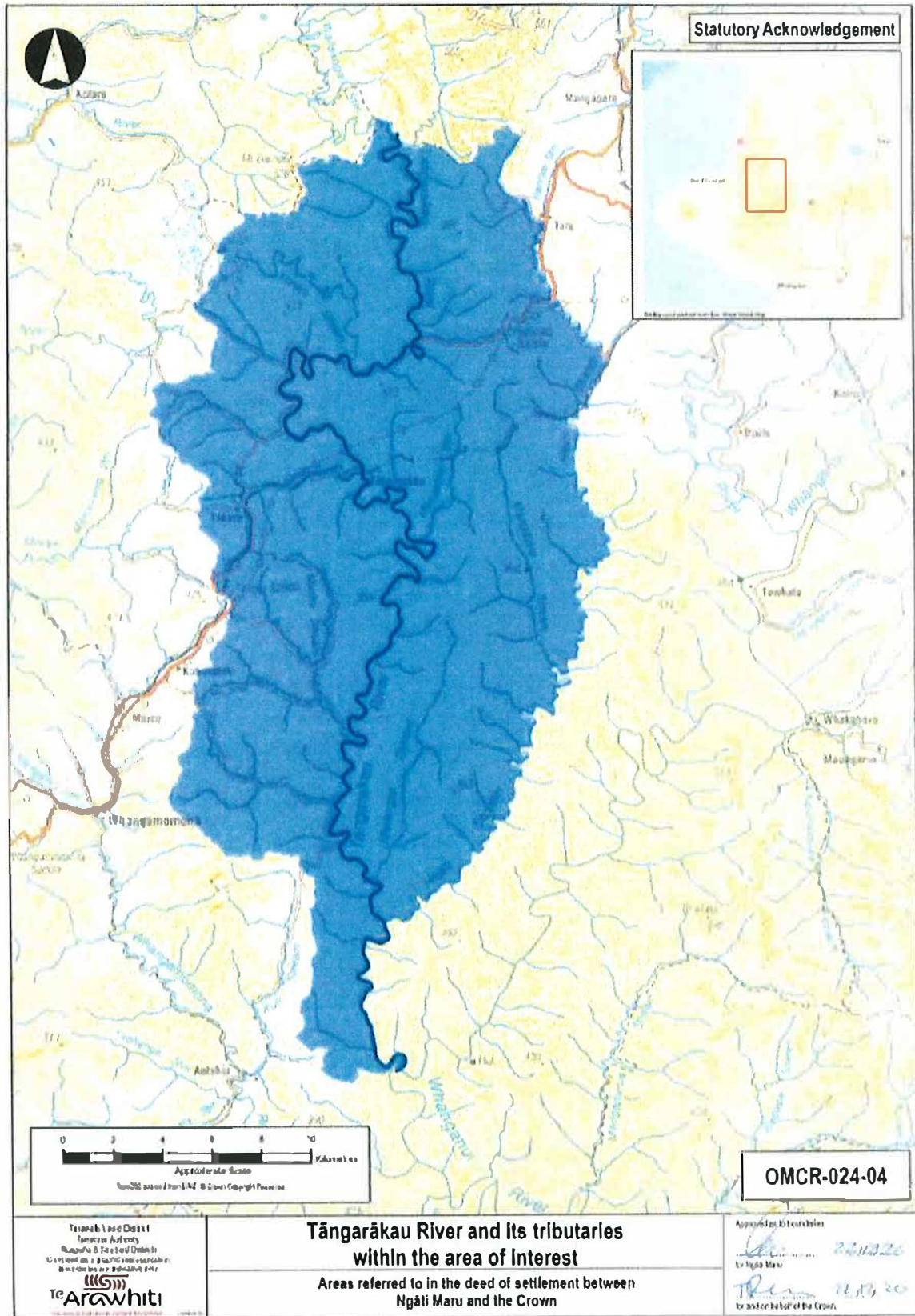
JM

6



ATTACHMENTS

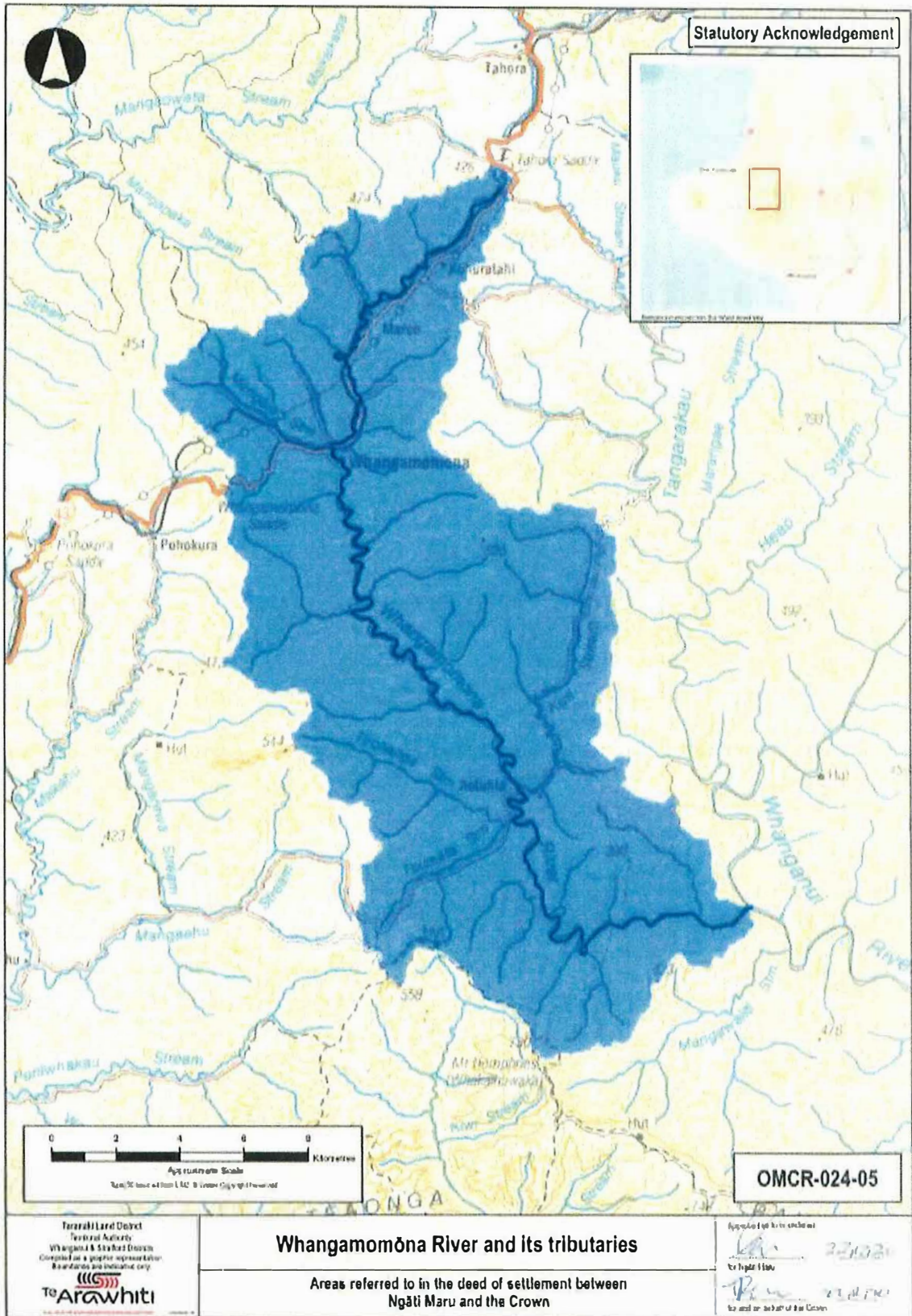
2: DEED PLANS



SM

ATTACHMENTS

2: DEED PLANS

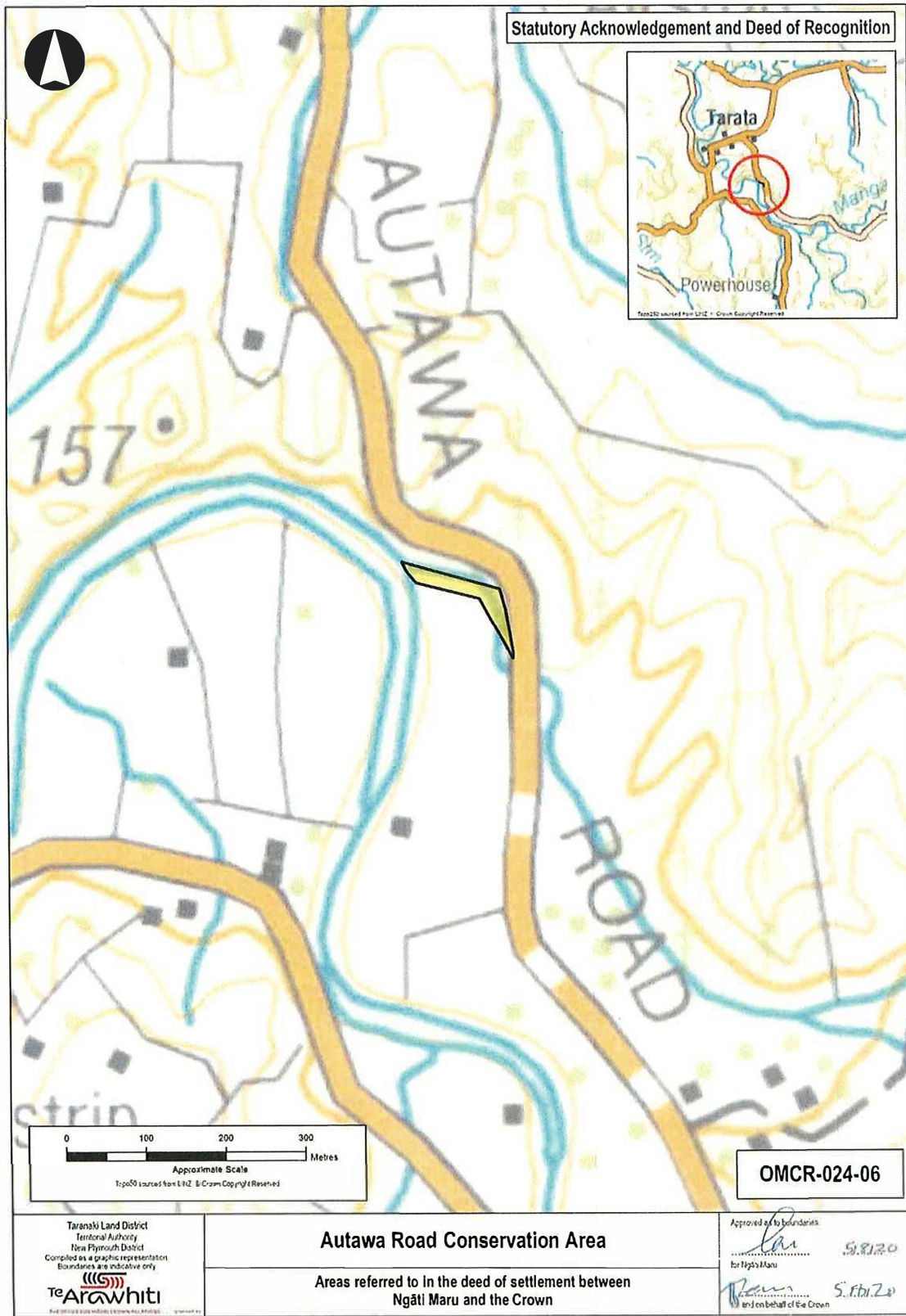


vm

AS

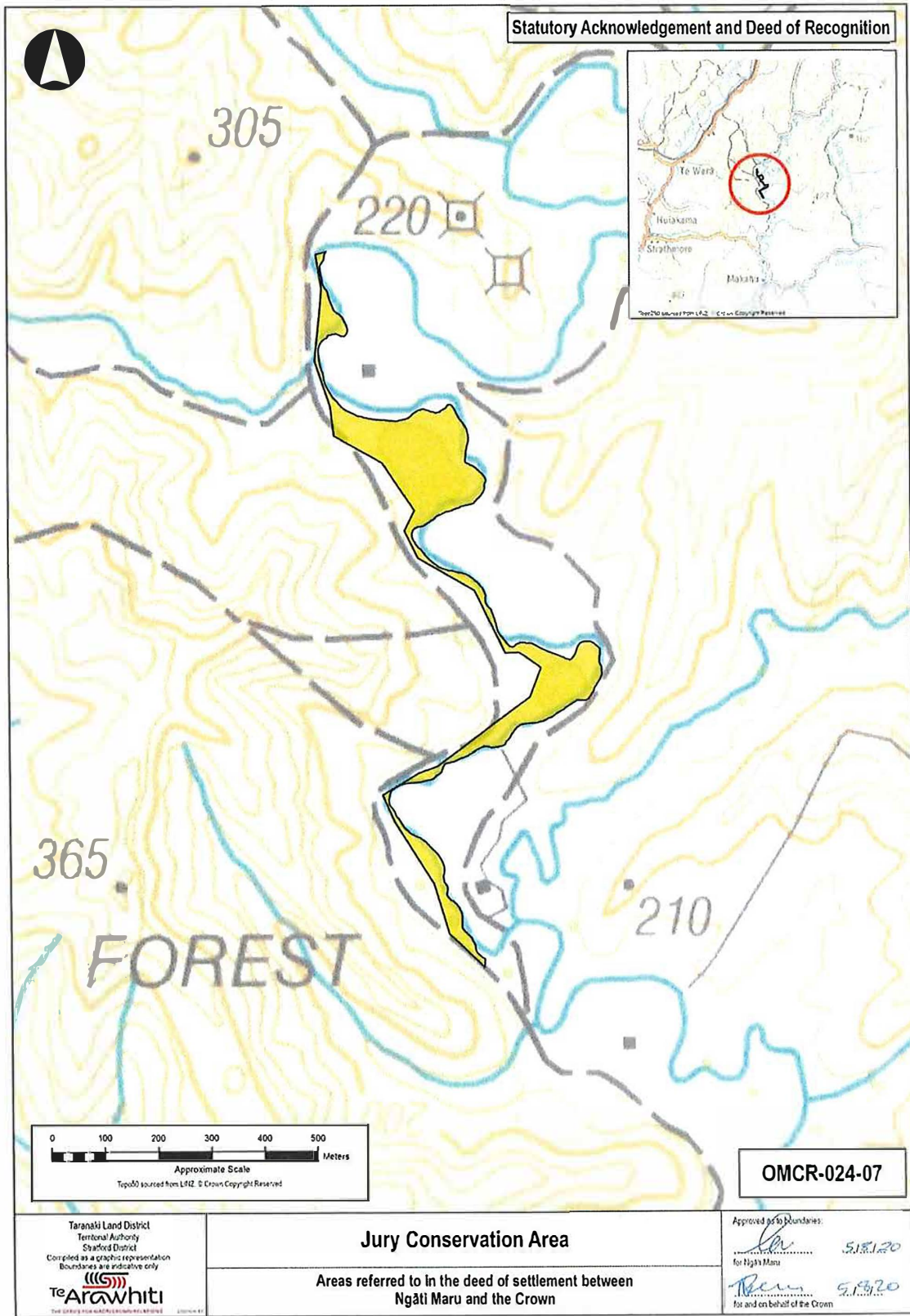
ATTACHMENTS

2: DEED PLANS



ATTACHMENTS

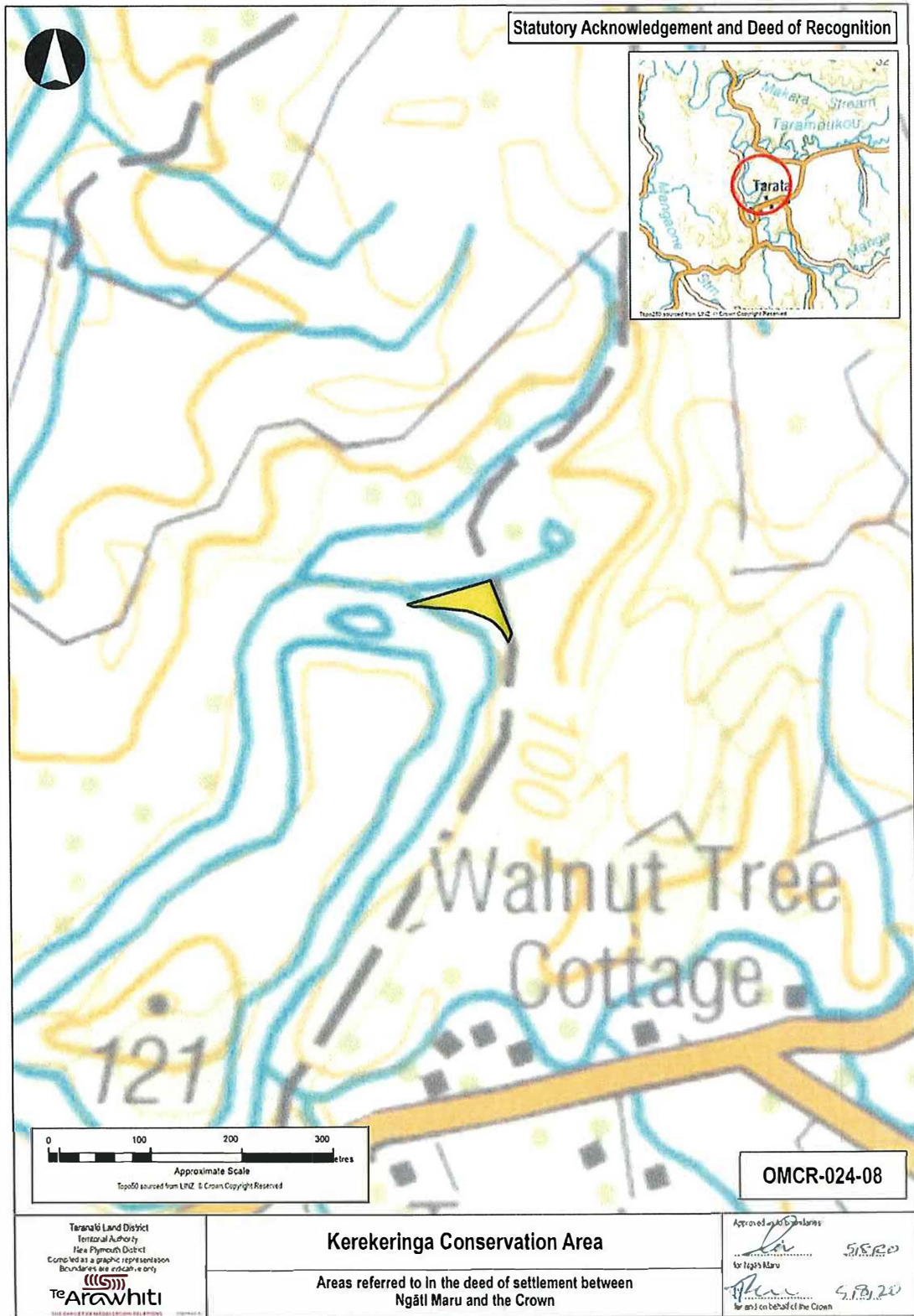
2: DEED PLANS



vm

ATTACHMENTS

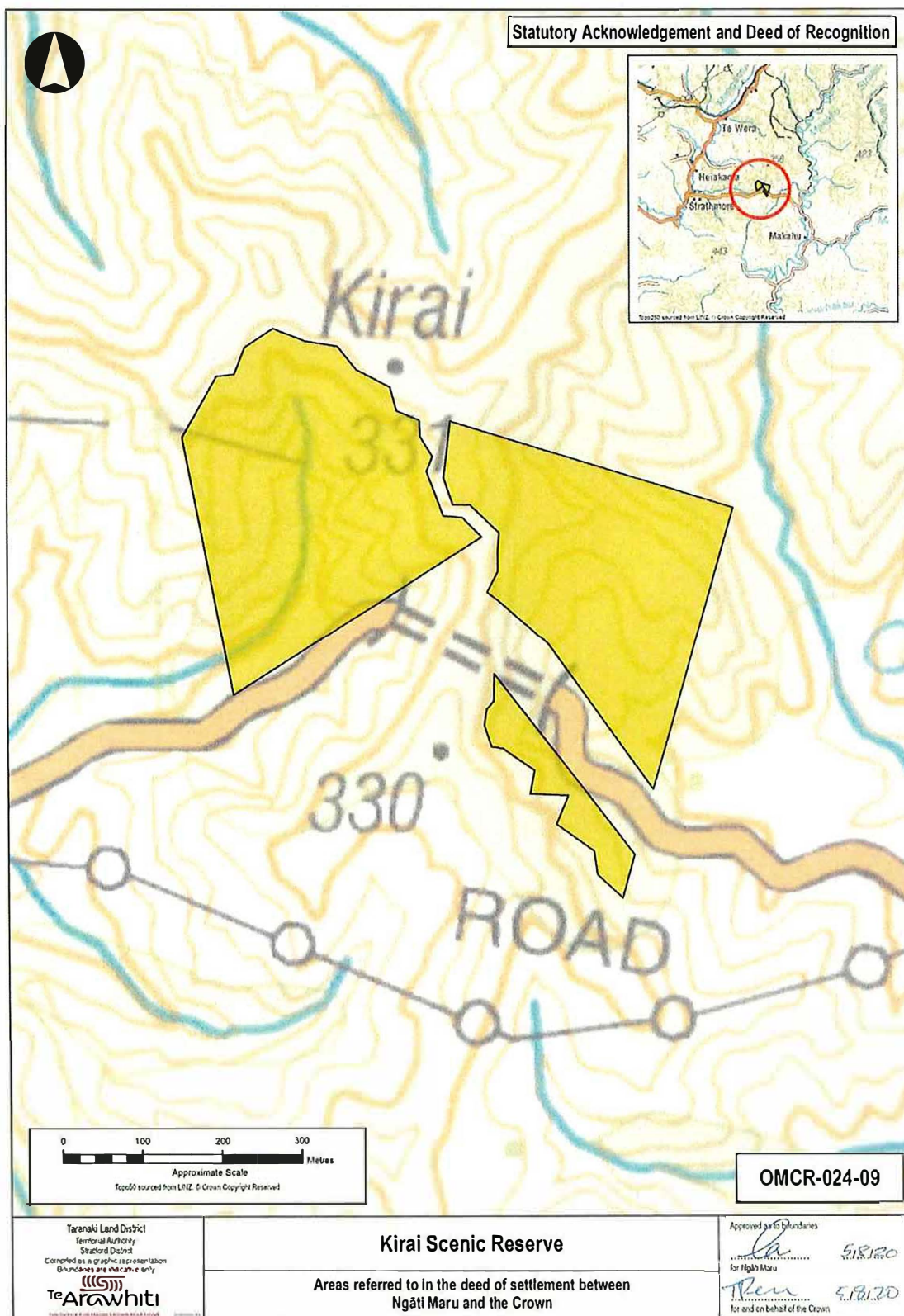
2: DEED PLANS



VM

ATTACHMENTS

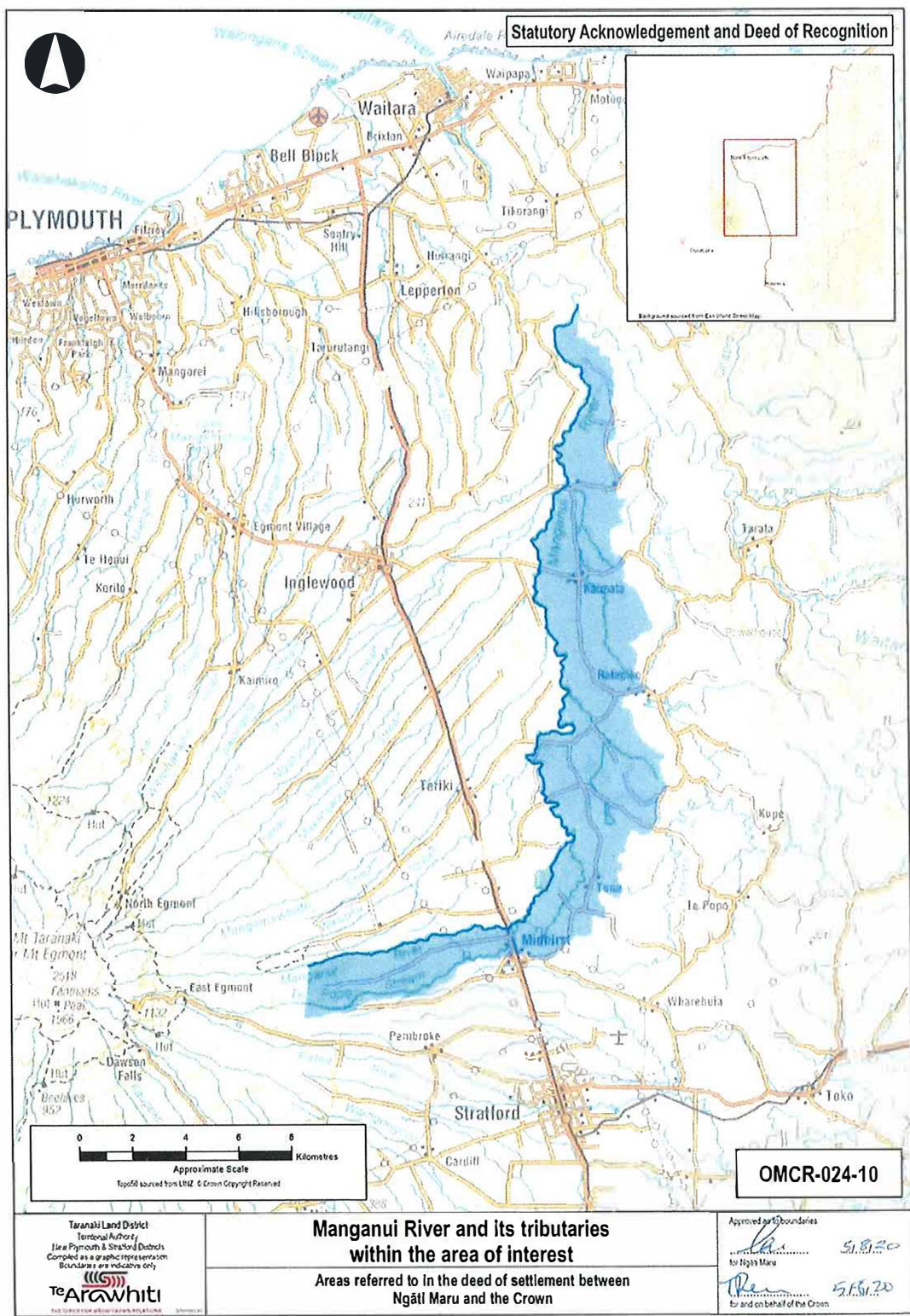
2: DEED PLANS



vm

ATTACHMENTS

2: DEED PLANS



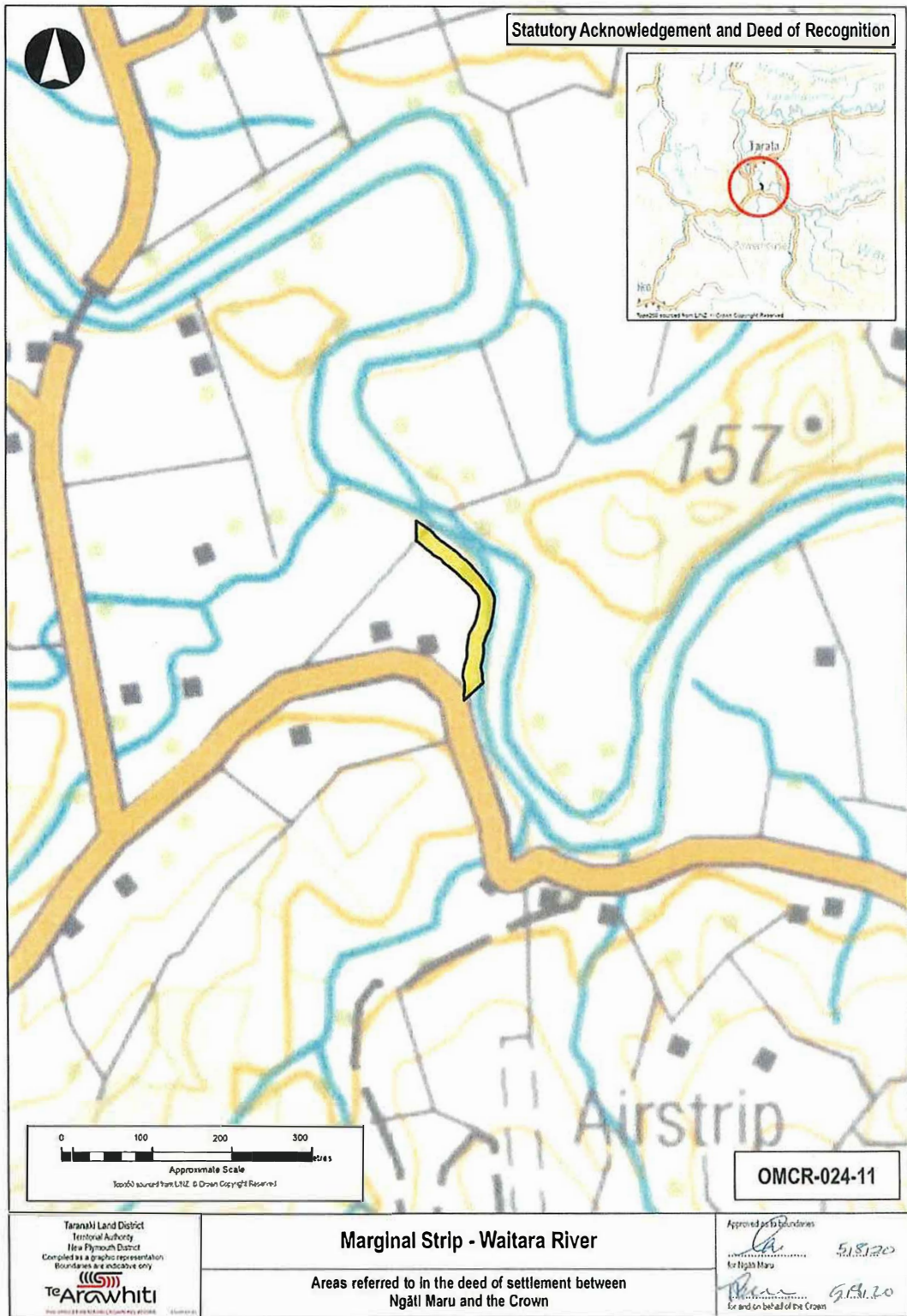
**Manganui River and its tributaries  
within the area of interest**

Areas referred to in the deed of settlement between  
Ngāi Maru and the Crown

Approved boundaries  
 \_\_\_\_\_ 5.11.20  
 for Ngāi Maru  
 \_\_\_\_\_ 5.11.20  
 for and on behalf of the Crown

ATTACHMENTS

2: DEED PLANS

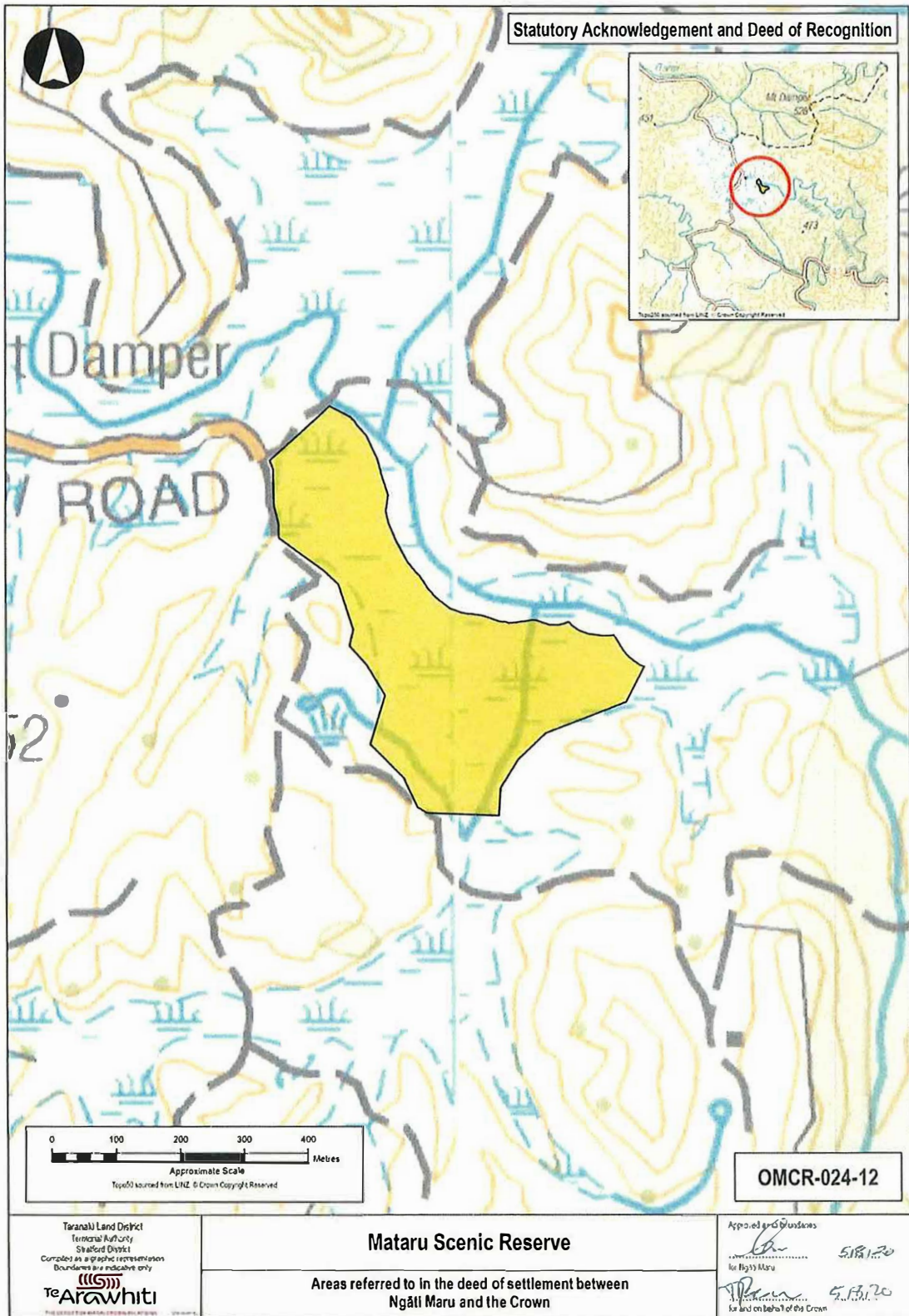


VM



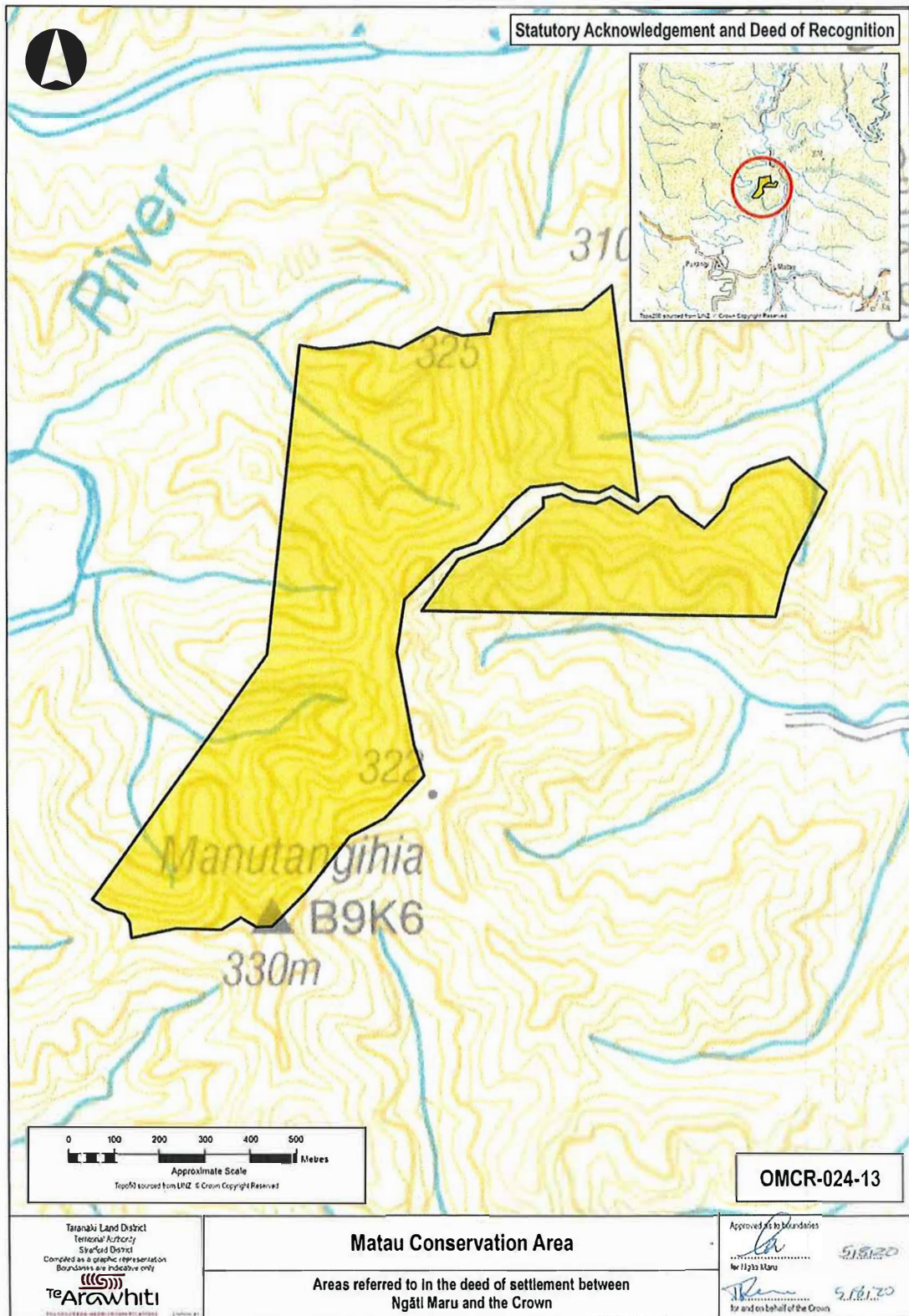
ATTACHMENTS

2: DEED PLANS



ATTACHMENTS

2: DEED PLANS

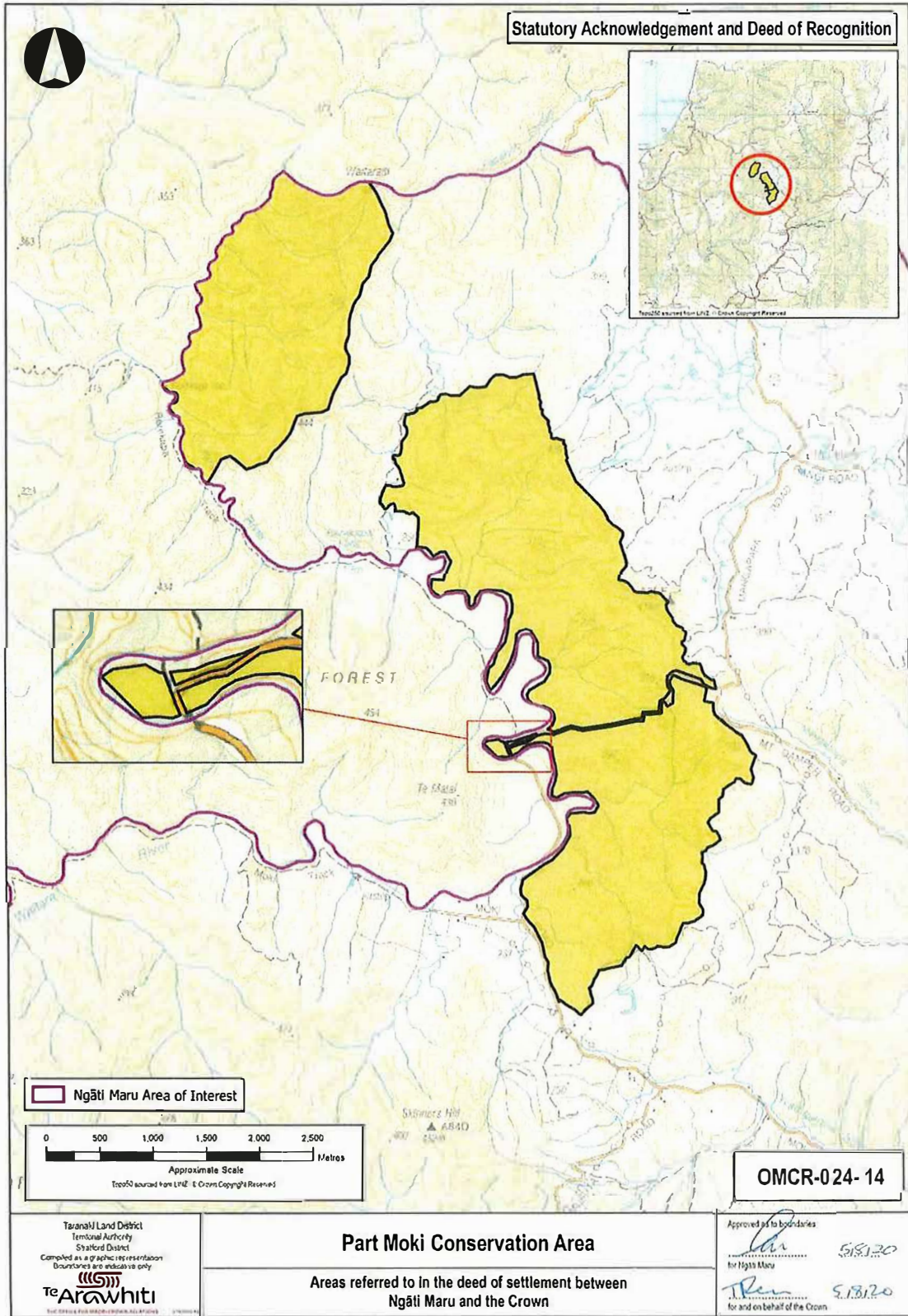


vm

✓

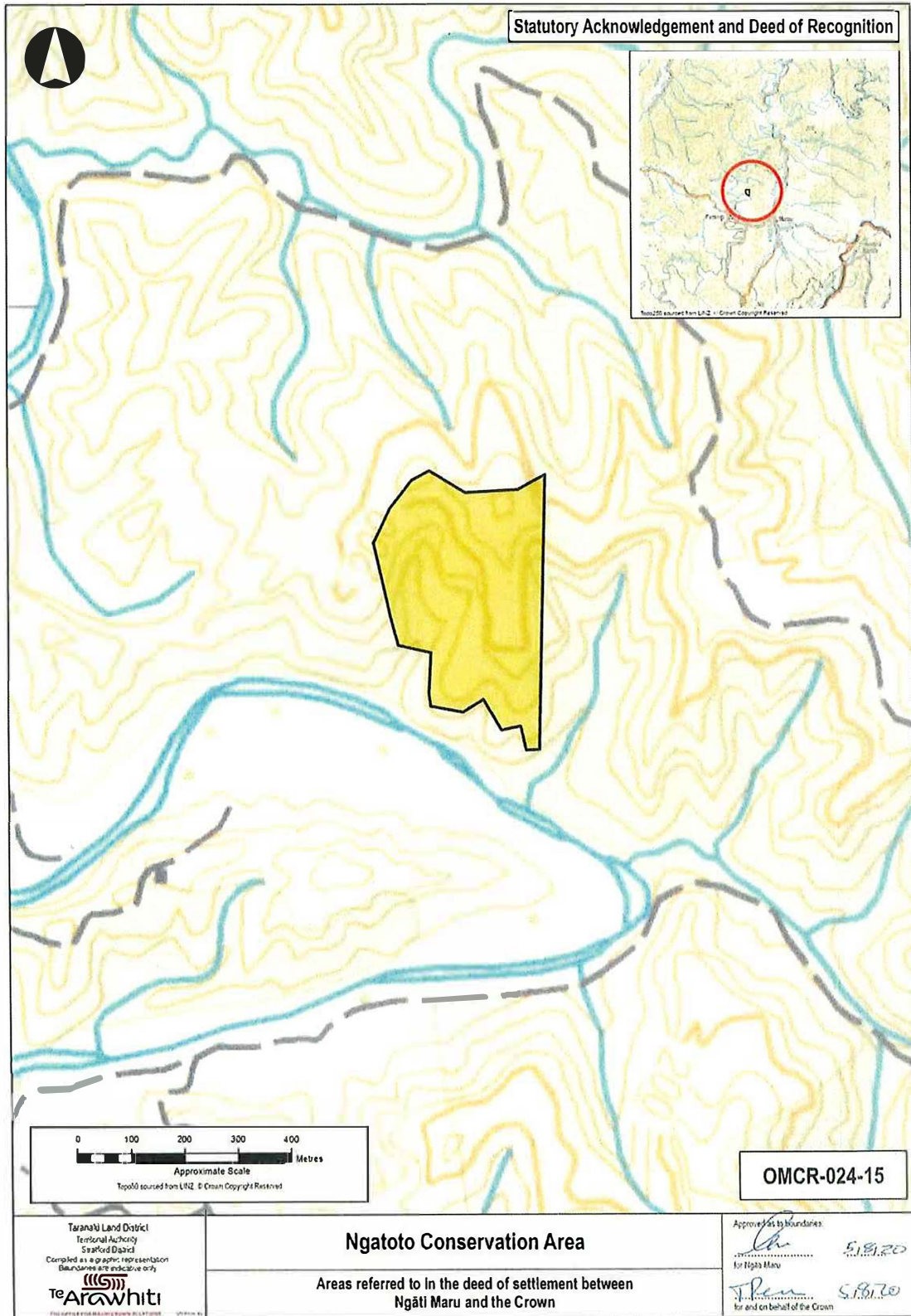
# ATTACHMENTS

## 2: DEED PLANS



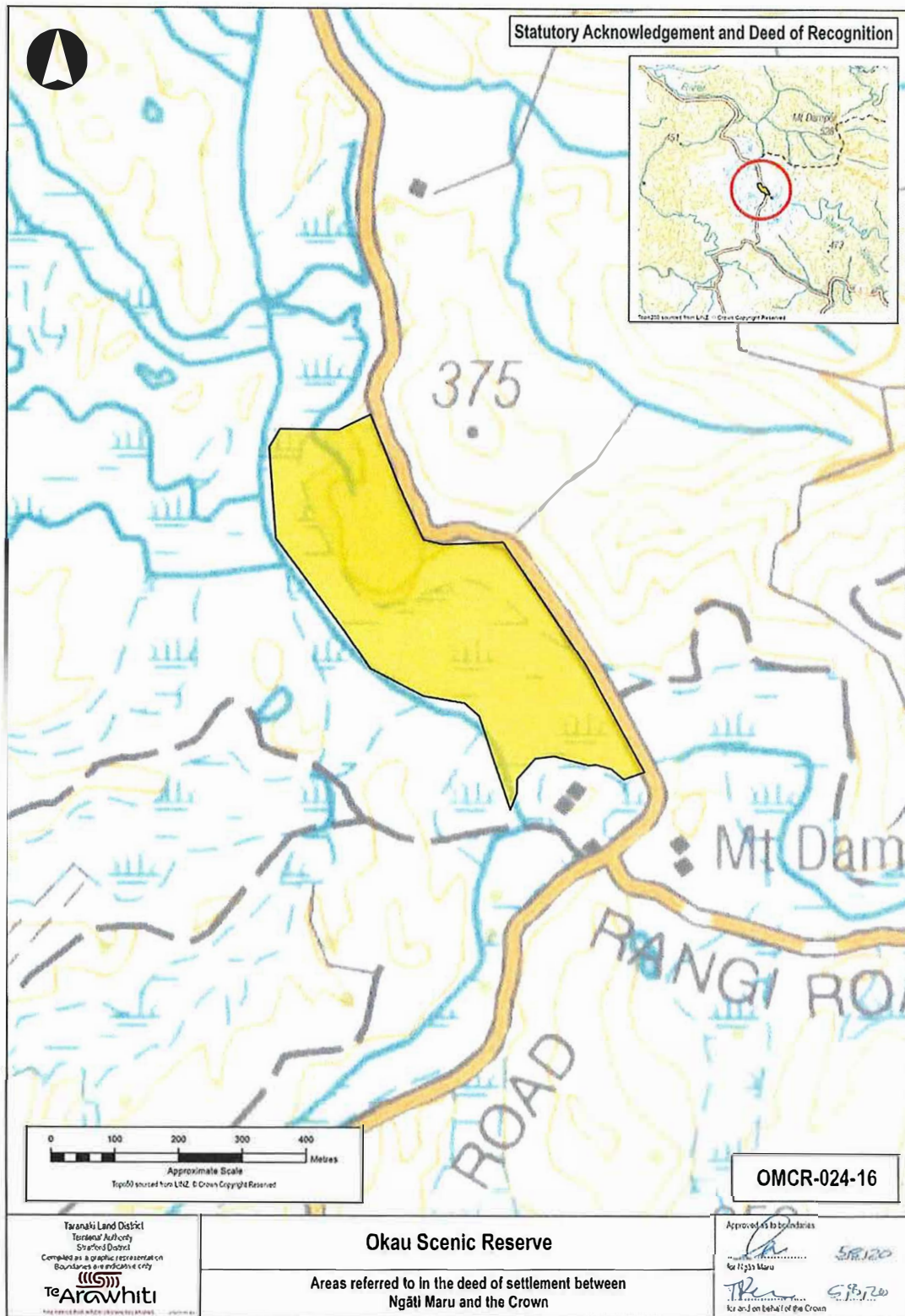
ATTACHMENTS

2: DEED PLANS



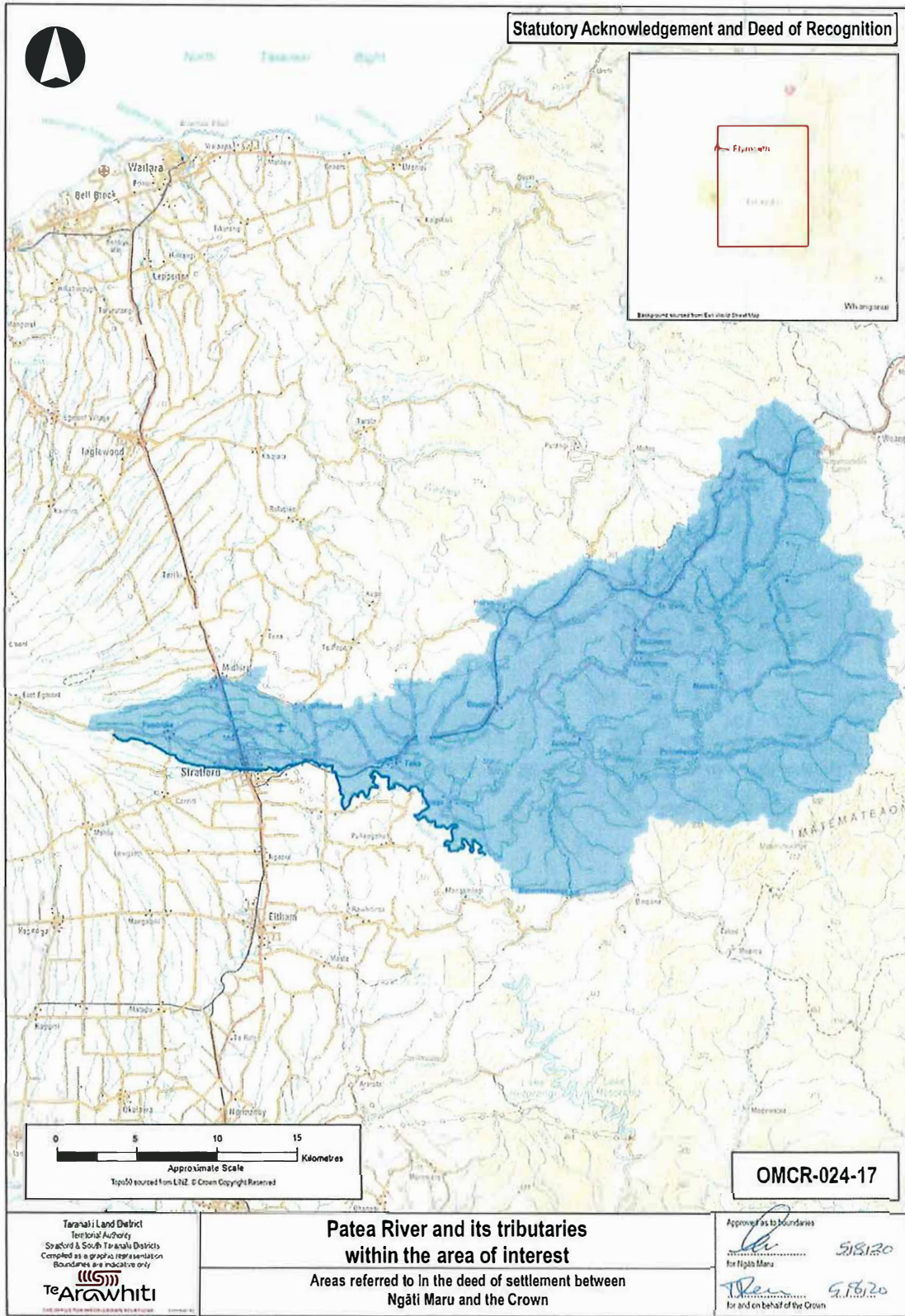
ATTACHMENTS

2: DEED PLANS



ATTACHMENTS

2: DEED PLANS

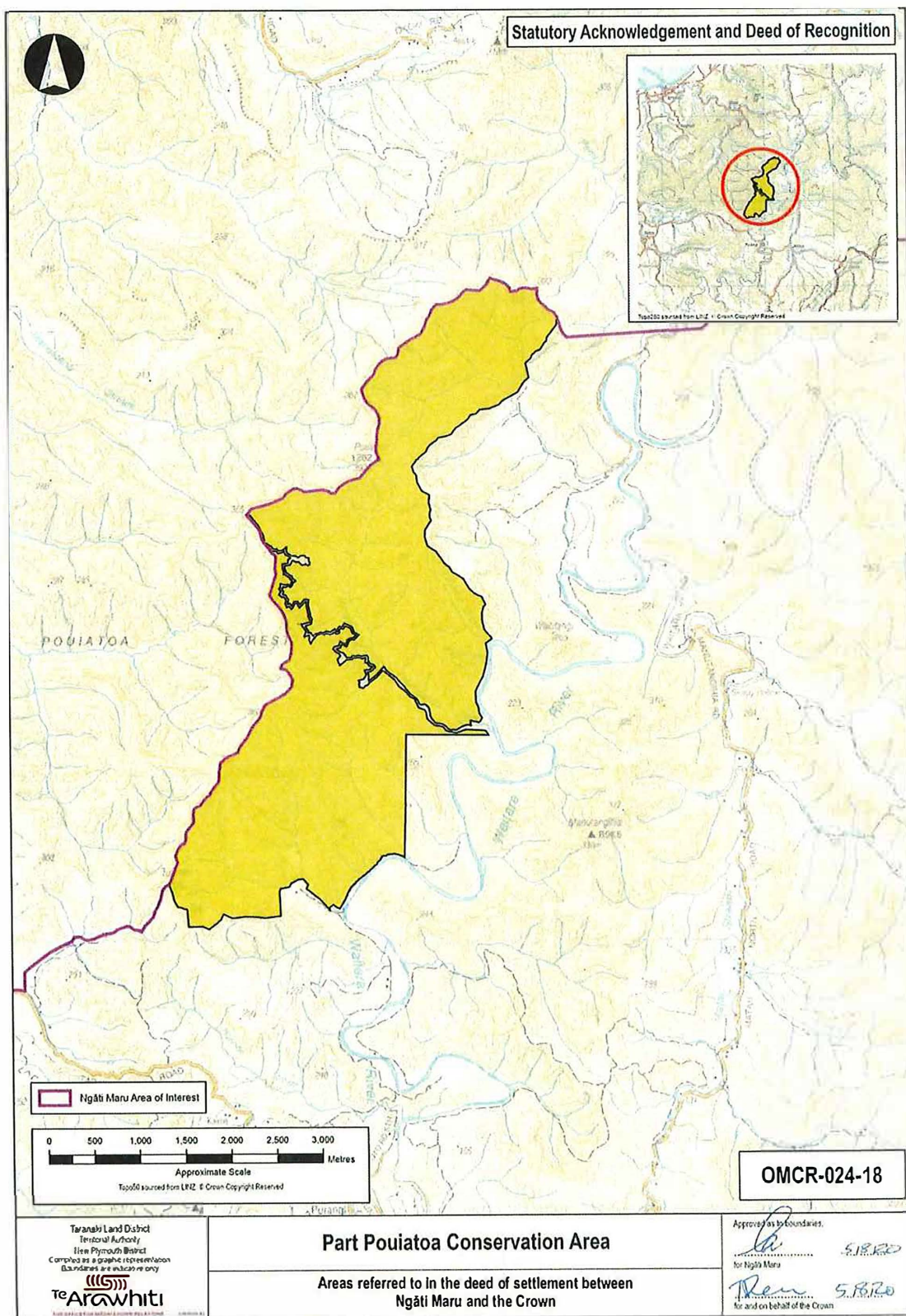


JM

RL

ATTACHMENTS

2: DEED PLANS

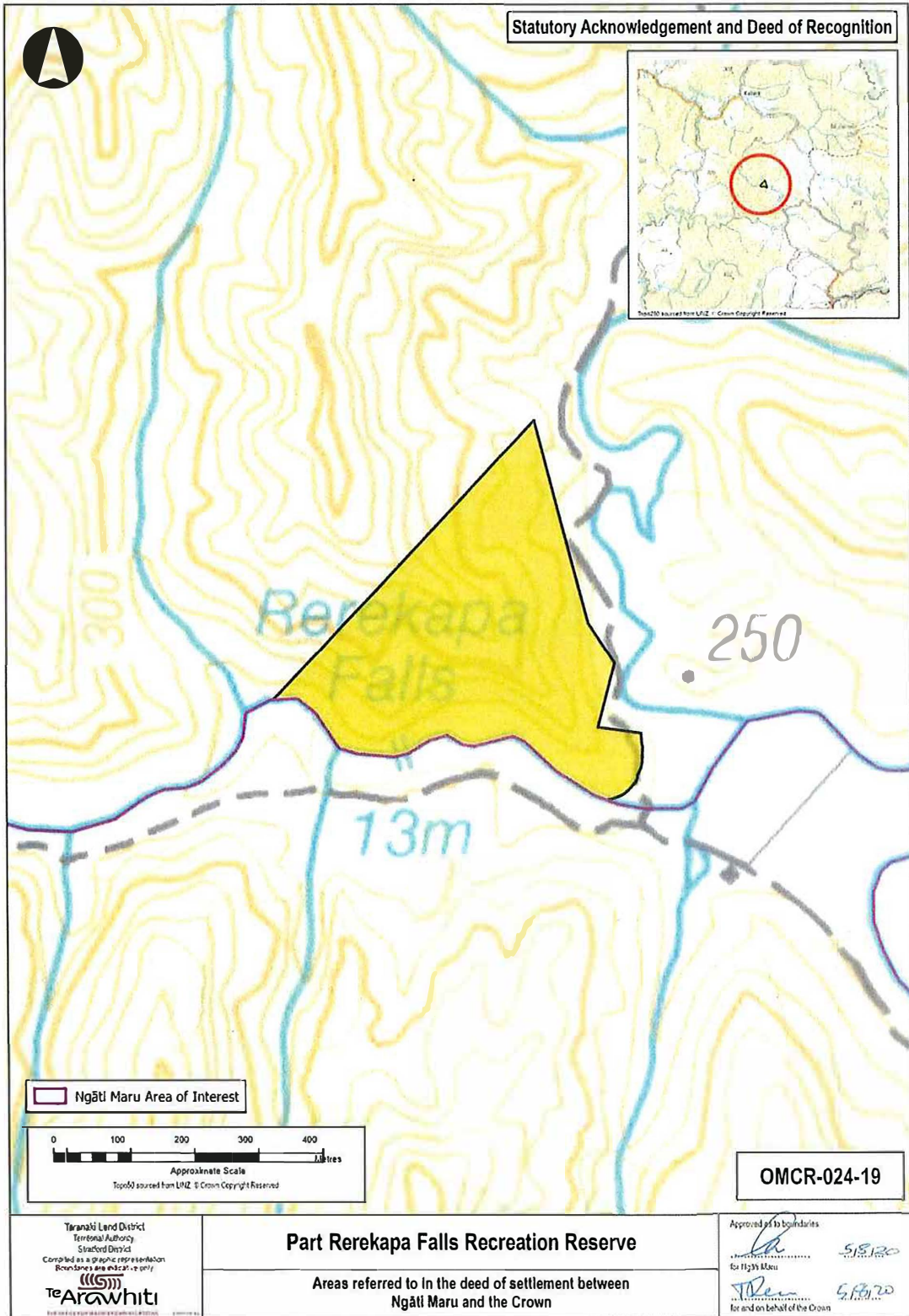


SM

*[Handwritten signature]*

ATTACHMENTS

2: DEED PLANS

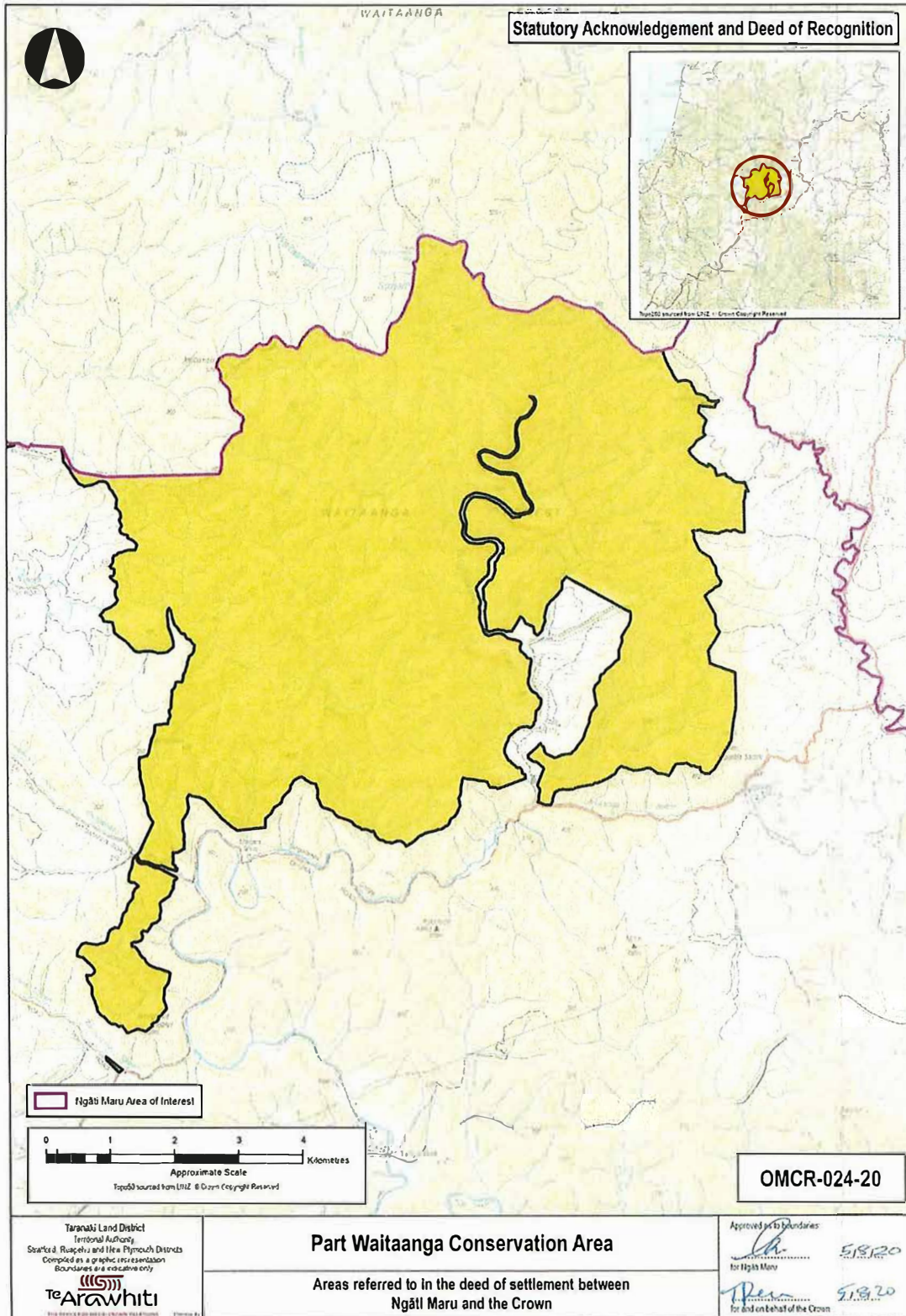


SM



ATTACHMENTS

2: DEED PLANS

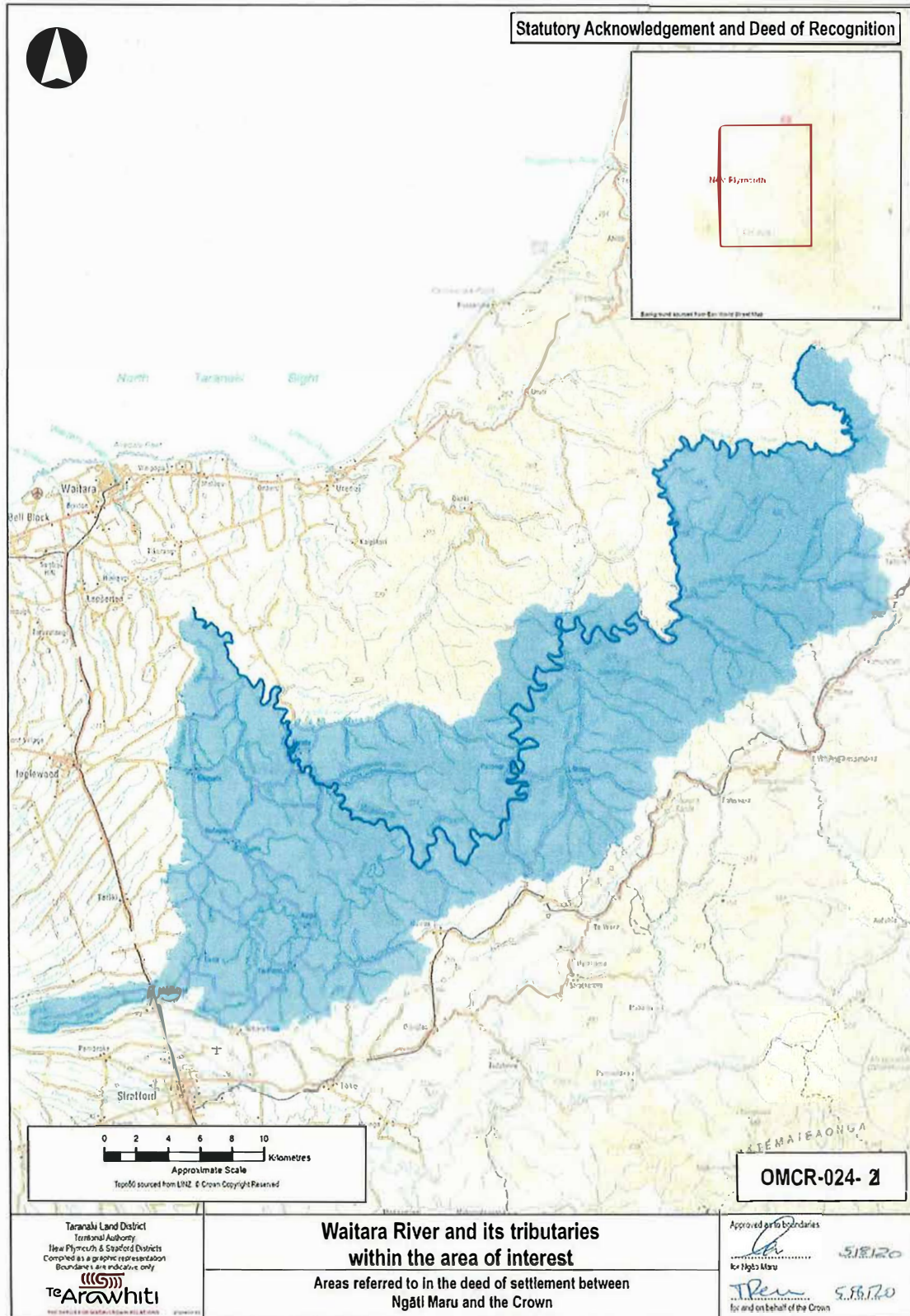


SM

LD

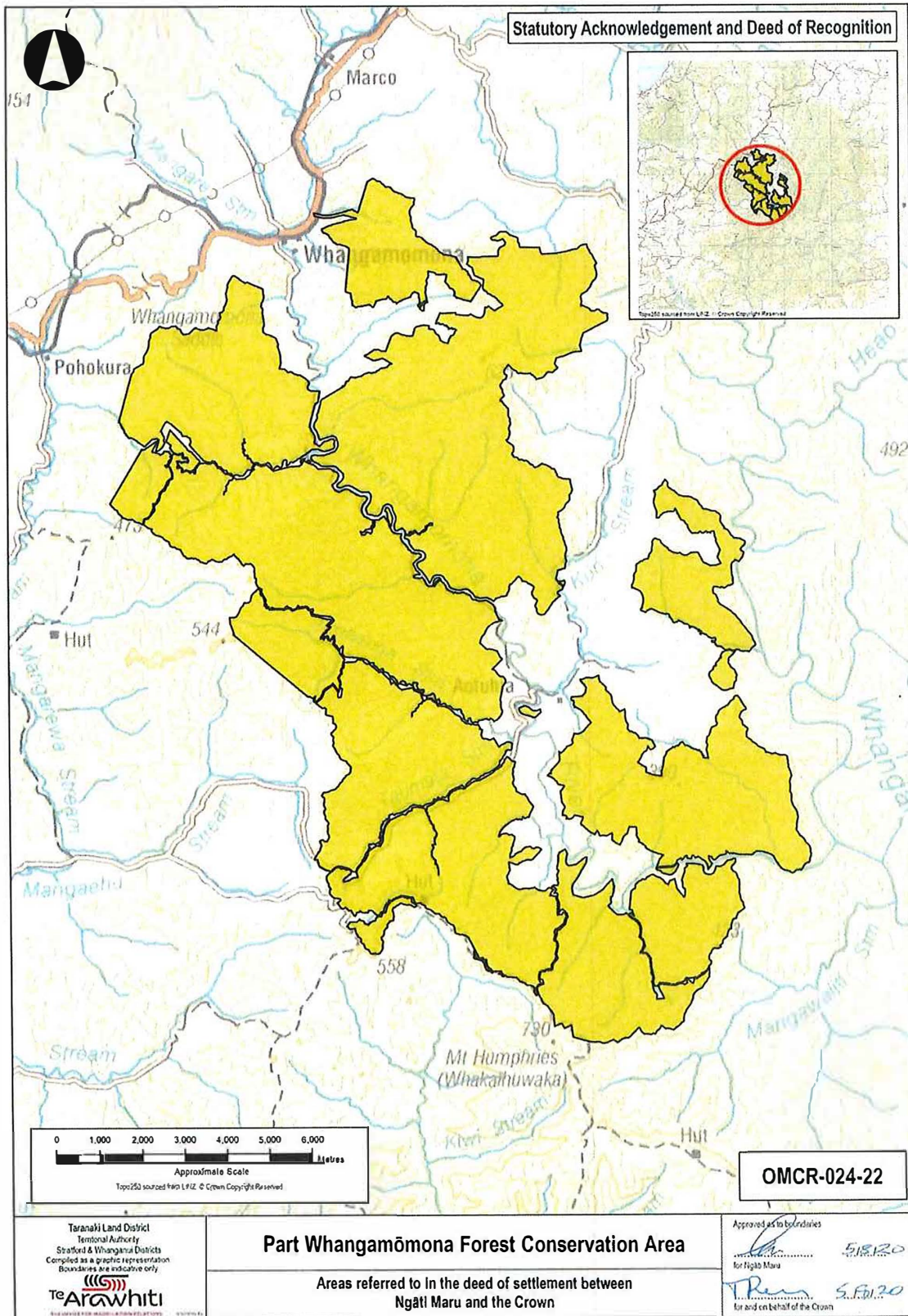
ATTACHMENTS

2: DEED PLANS



ATTACHMENTS

2: DEED PLANS

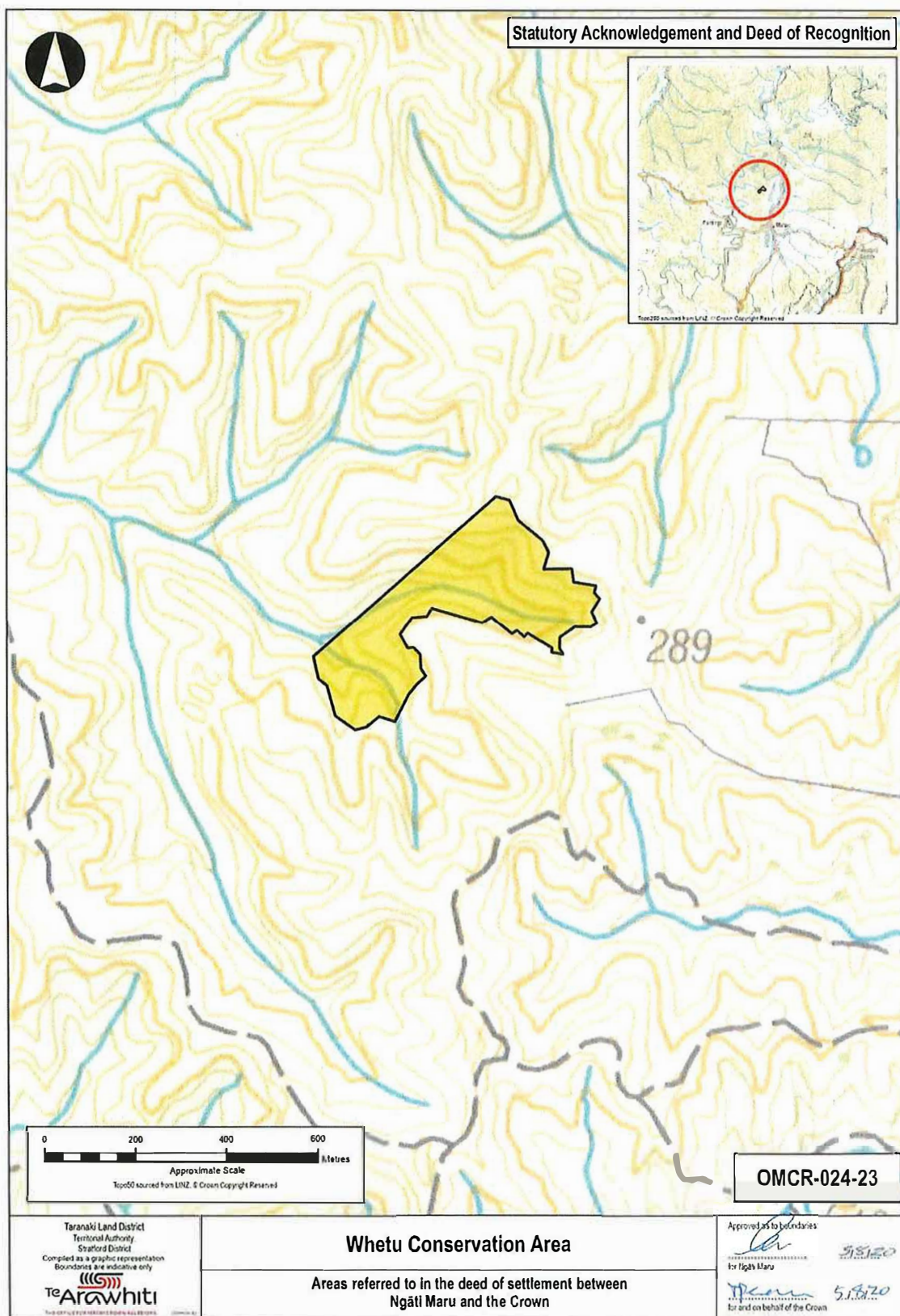


JM

Handwritten mark

ATTACHMENTS

2: DEED PLANS



VM

RP

**ATTACHMENTS**

---

**2: DEED PLANS**

---

**2.2 Cultural redress properties**

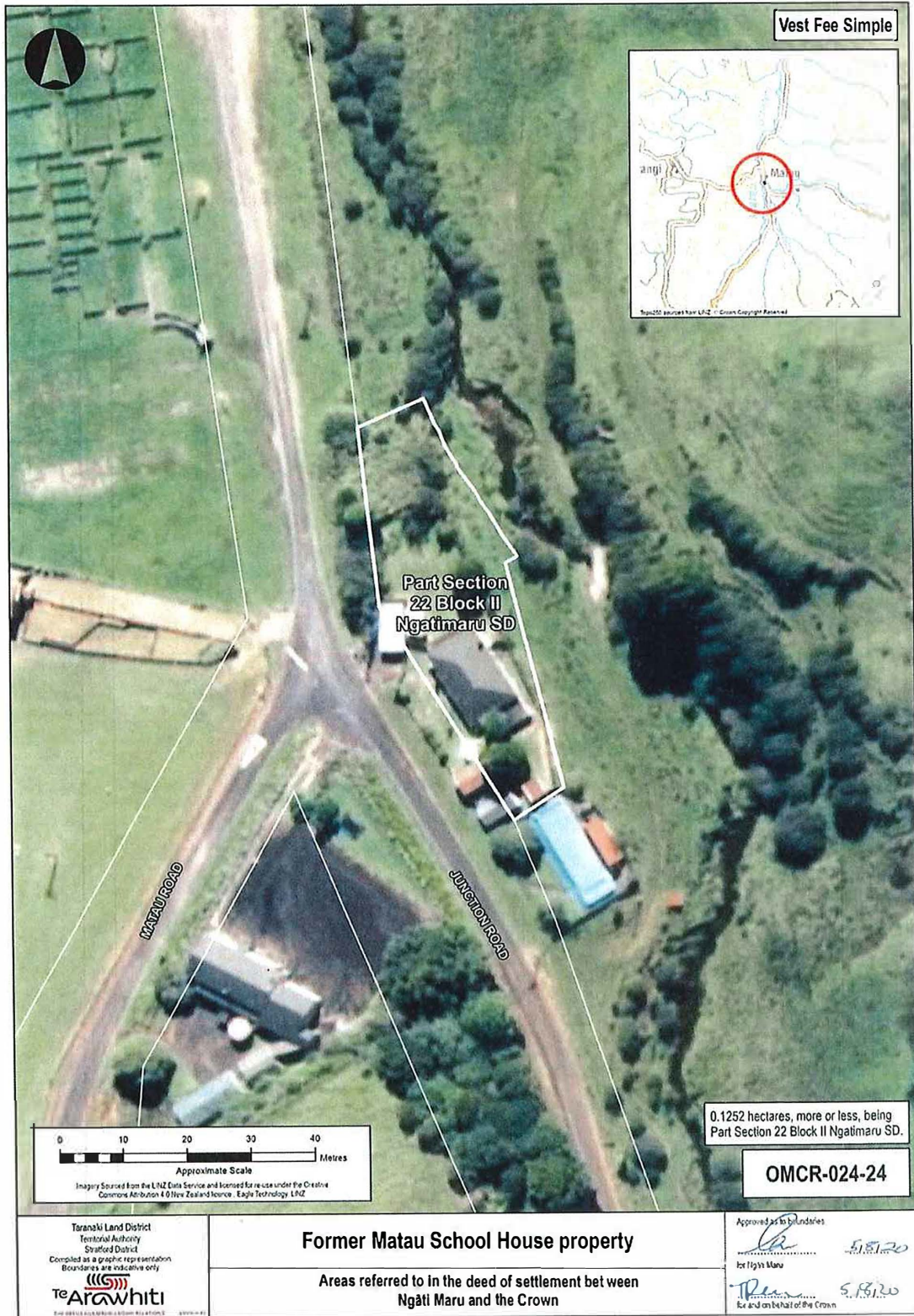
---

SM

✓

ATTACHMENTS

2: DEED PLANS

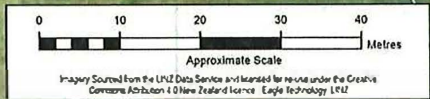
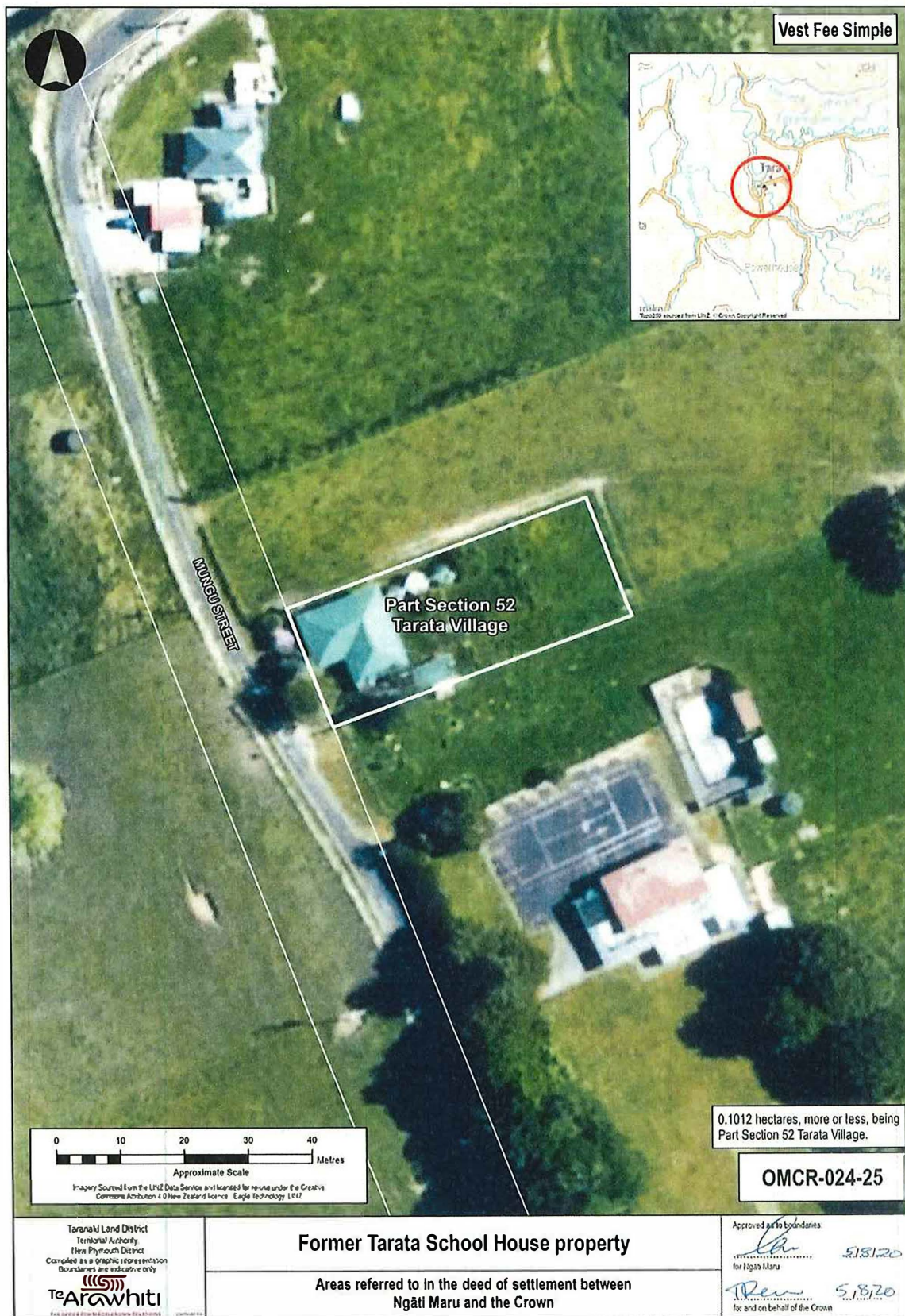


vm

*[Handwritten signature]*

ATTACHMENTS

2: DEED PLANS



0.1012 hectares, more or less, being Part Section 52 Tarata Village.

OMCR-024-25

Taranaki Land District  
 Territorial Authority  
 New Plymouth District  
 Compiled as a graphic representation  
 Boundaries are indicative only  
**Te Arawhiti**  
 Te Kaitiaki Take Kōwhiri Māori

**Former Tarata School House property**

Areas referred to in the deed of settlement between  
 Ngāti Maru and the Crown

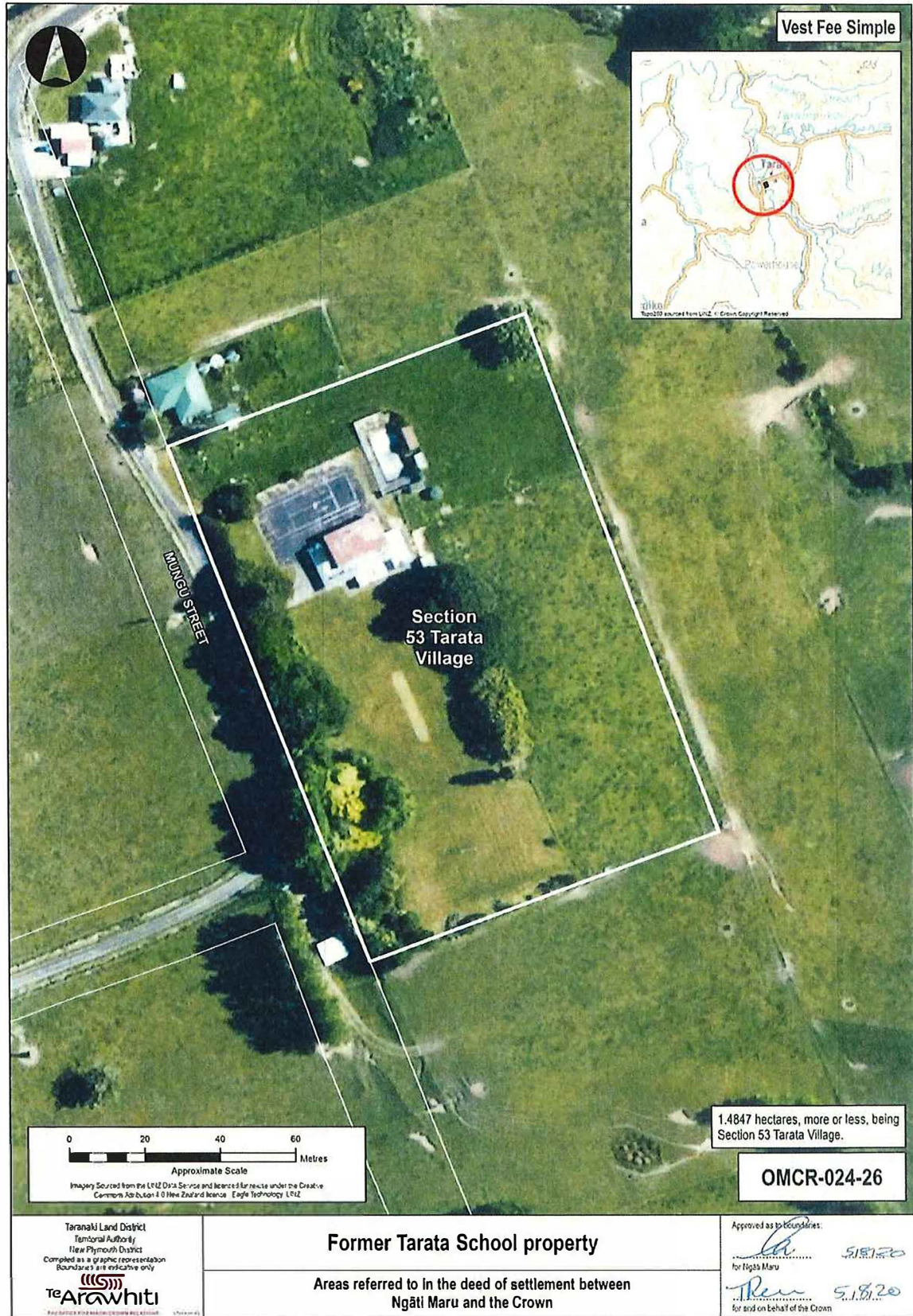
Approved as to boundaries  
 for Ngāti Maru 5/18/20  
 for and on behalf of the Crown 5/18/20

LM

ST

ATTACHMENTS

2: DEED PLANS



JM



ATTACHMENTS

2: DEED PLANS

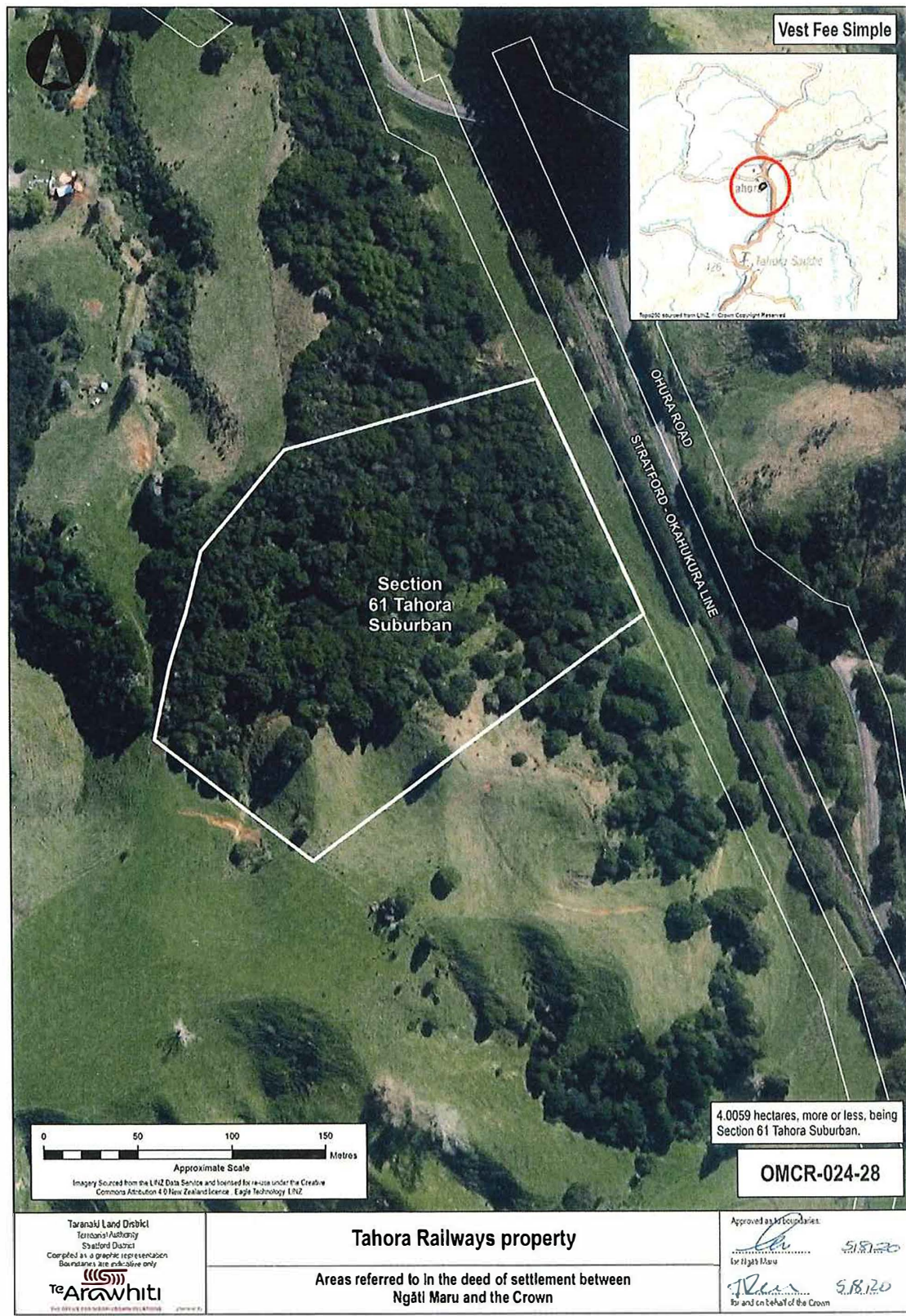


VM

✓✓

ATTACHMENTS

2: DEED PLANS



VM

ATTACHMENTS

2: DEED PLANS



JM

ATTACHMENTS

2: DEED PLANS



Vm

ATTACHMENTS

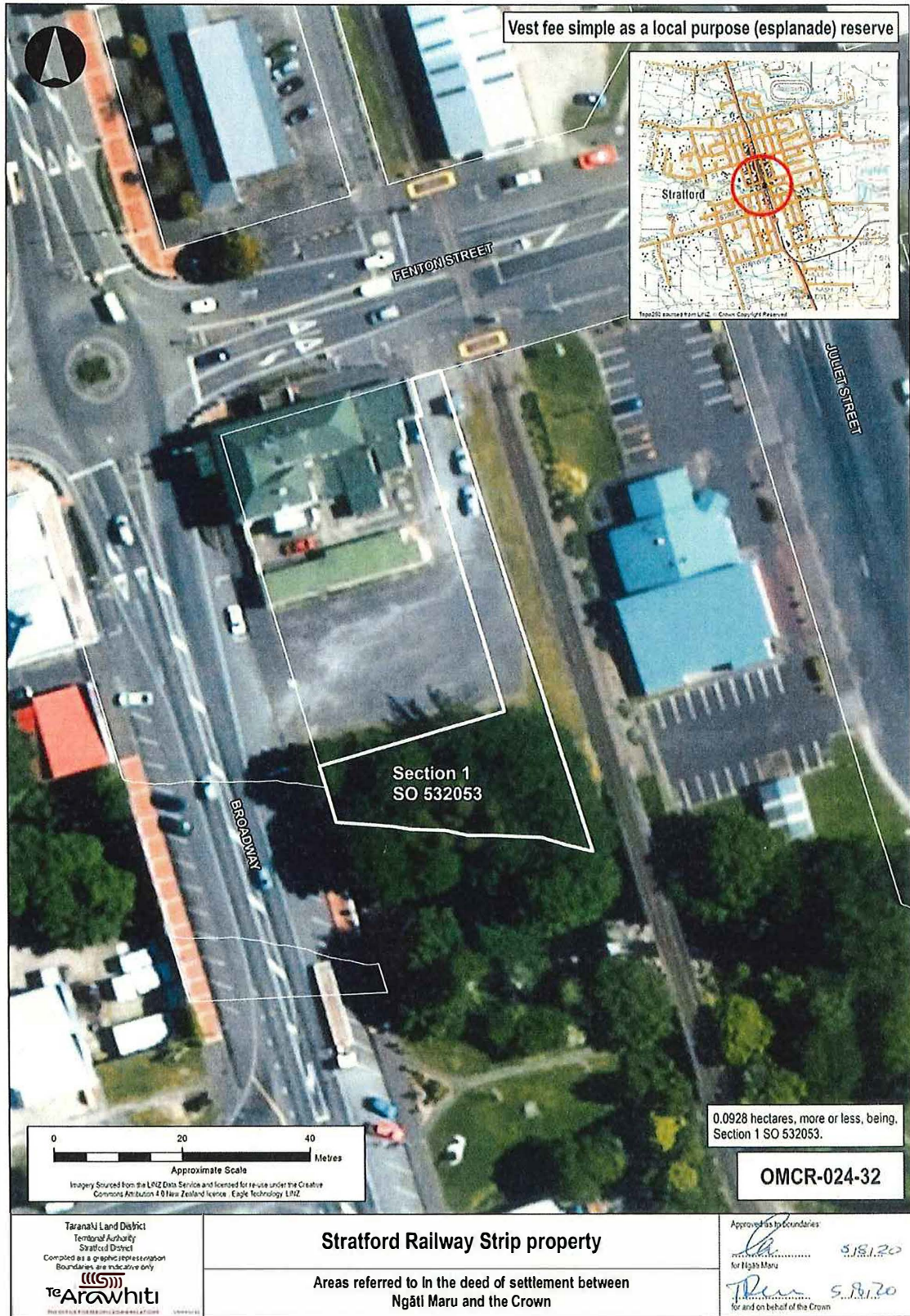
2: DEED PLANS



jm

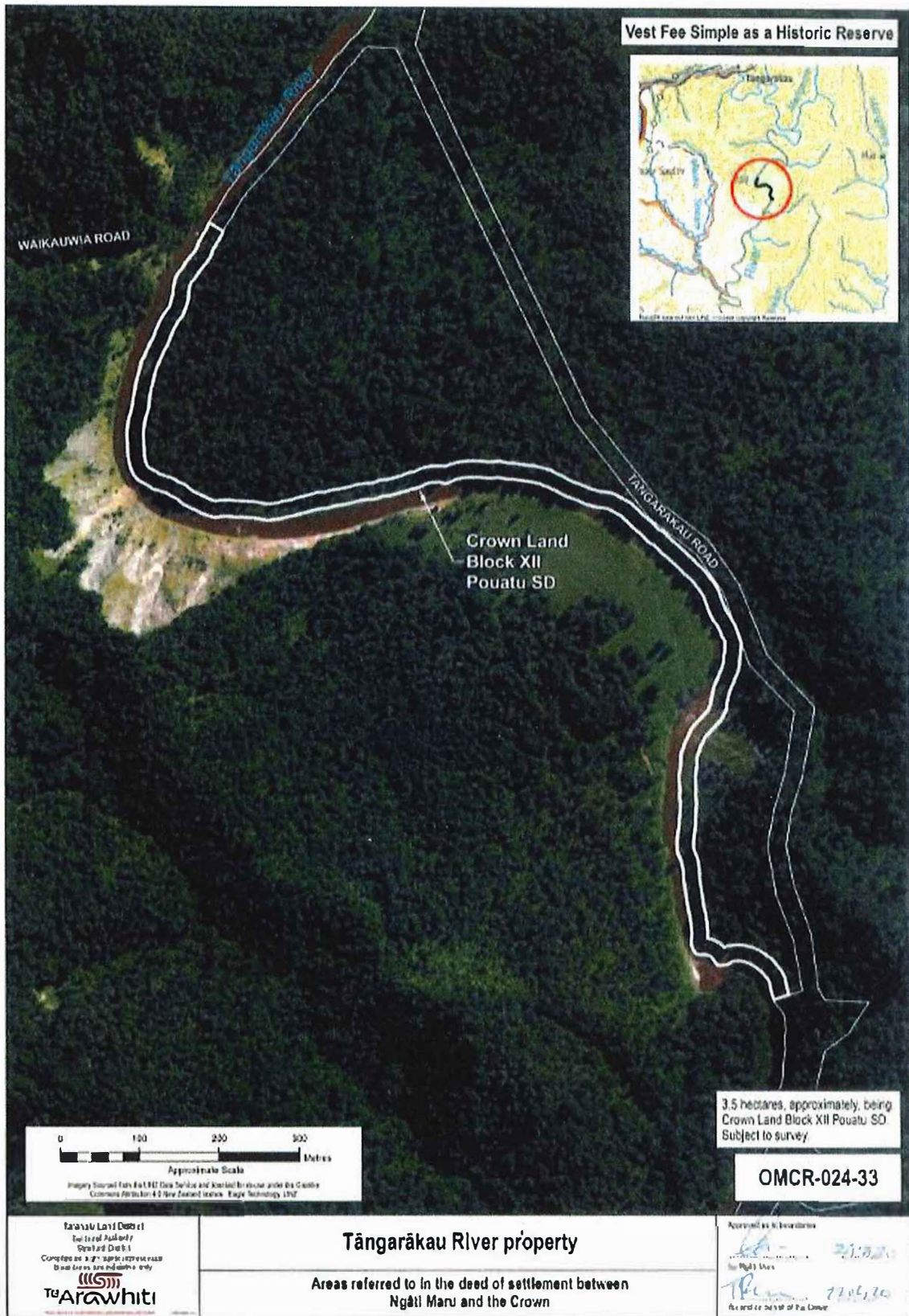
ATTACHMENTS

2: DEED PLANS



ATTACHMENTS

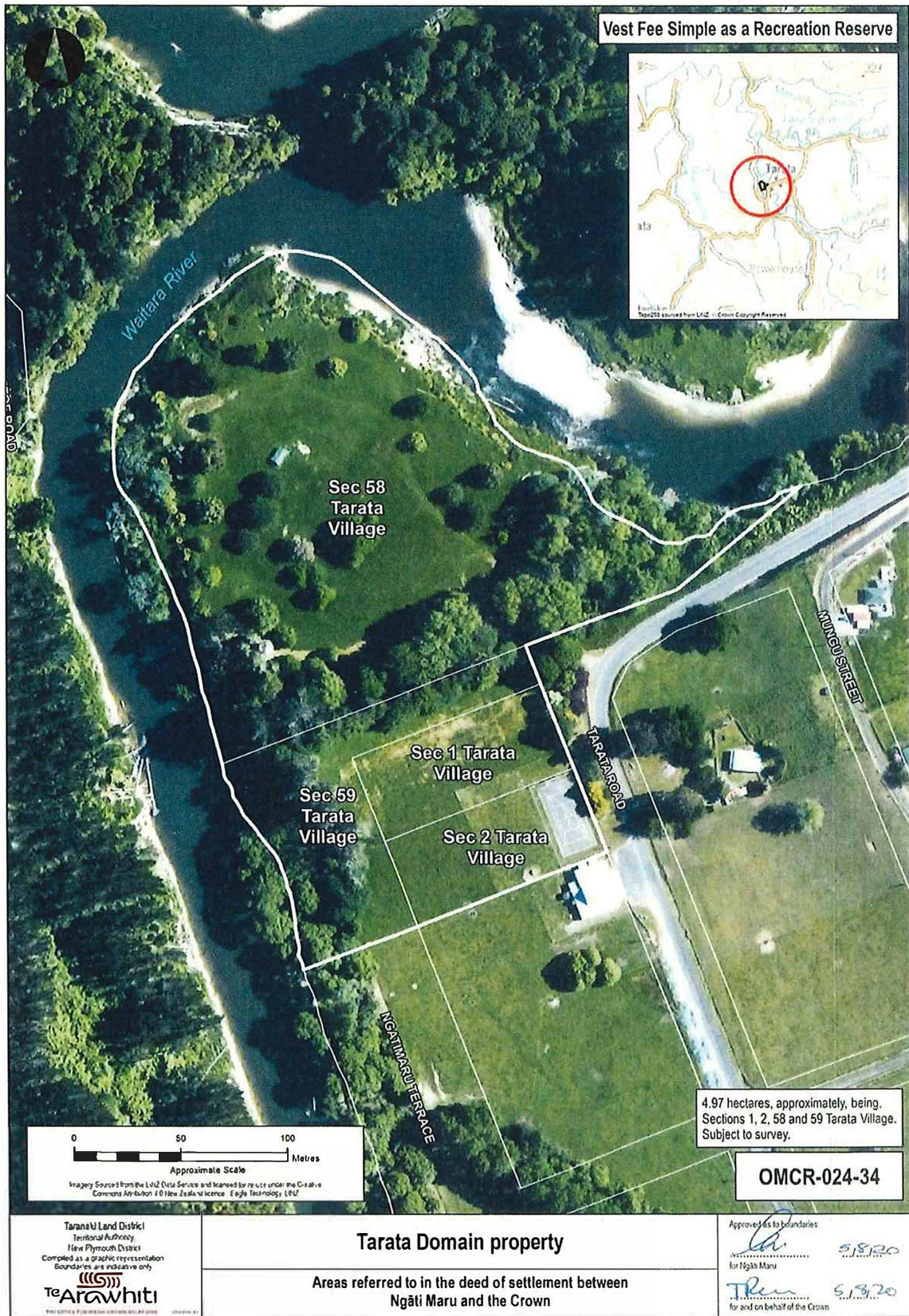
2: DEED PLANS



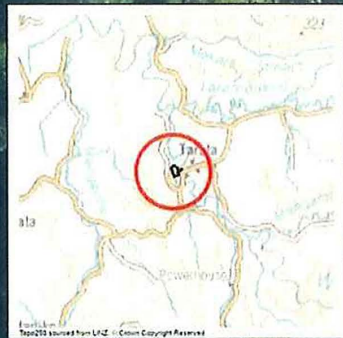
Vmy

ATTACHMENTS

2: DEED PLANS



Vest Fee Simple as a Recreation Reserve



Sec 58  
Tarata  
Village

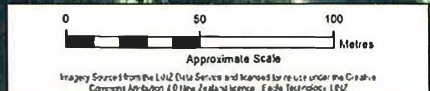
Sec 1 Tarata  
Village

Sec 59  
Tarata  
Village

Sec 2 Tarata  
Village

4.97 hectares, approximately, being,  
Sections 1, 2, 58 and 59 Tarata Village.  
Subject to survey.

OMCR-024-34



Taranaki Land District  
Territorial Authority  
New Plymouth District  
Compiled as a graphic representation  
Boundaries are indicative only  
**Te Arawhiti**  
Te Kaitiaki Take Kōwhiri

**Tarata Domain property**

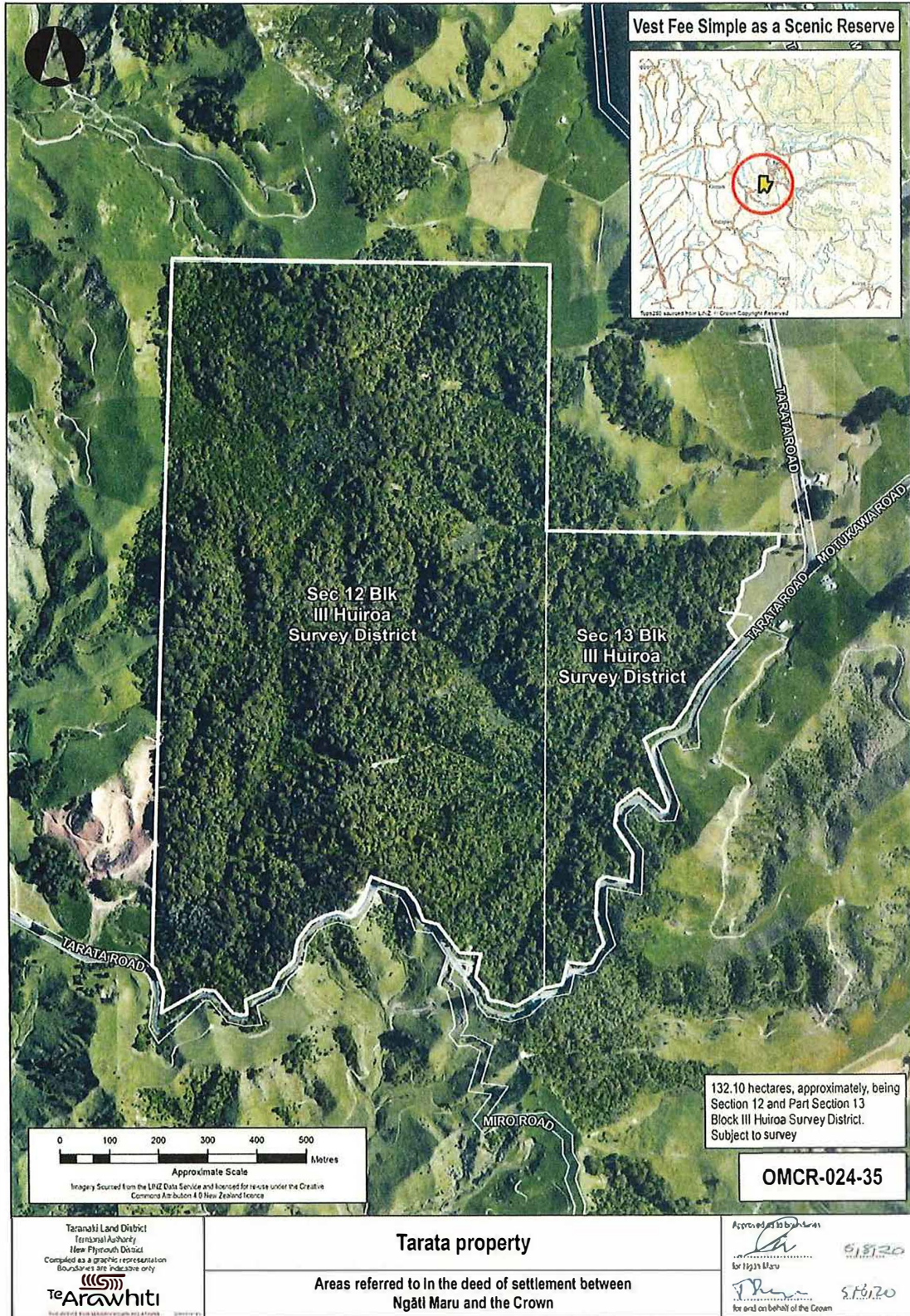
Areas referred to in the deed of settlement between  
Ngāti Maru and the Crown

Approved as to boundaries  
for Ngāti Maru  
for and on behalf of the Crown



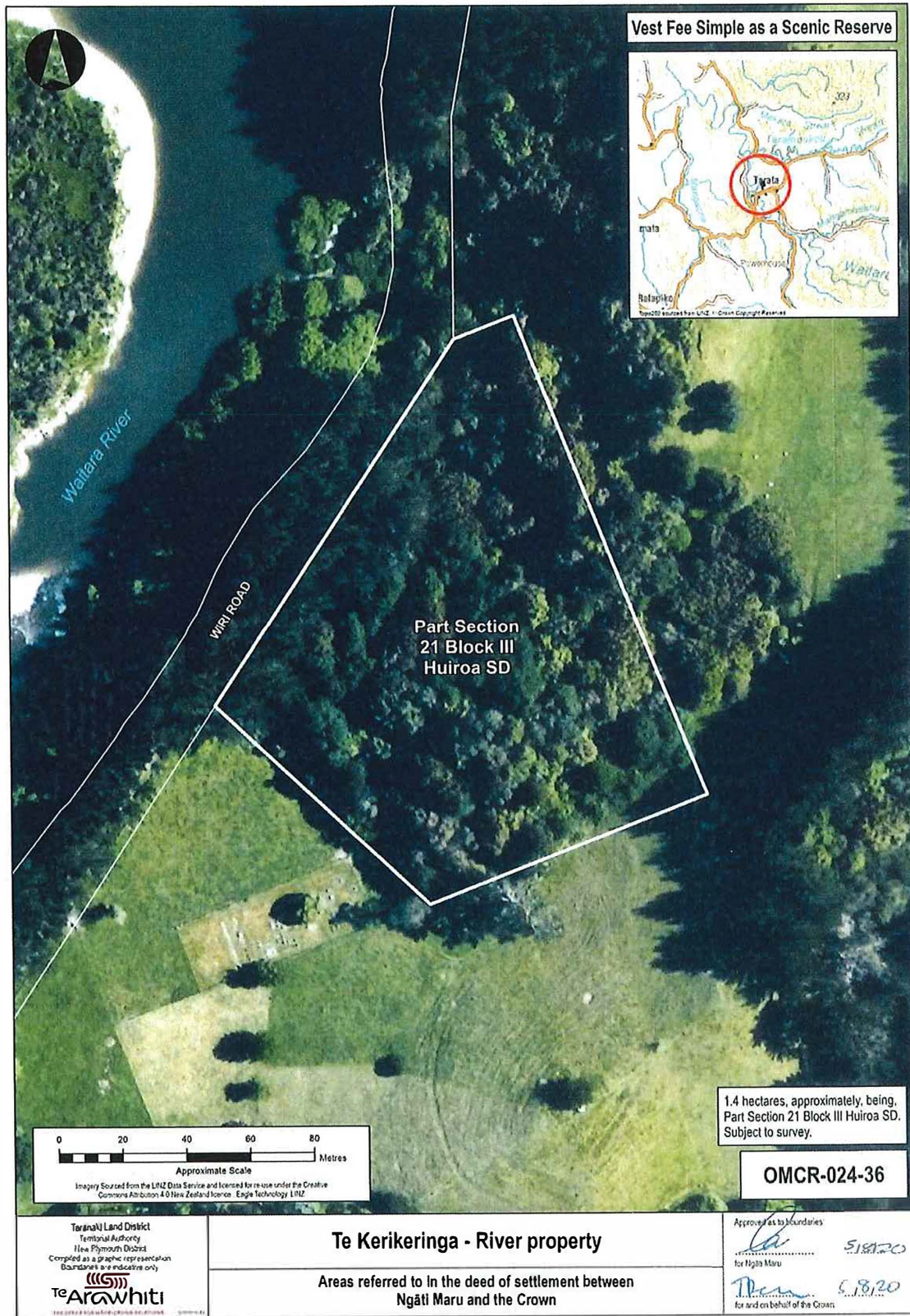
ATTACHMENTS

2: DEED PLANS



ATTACHMENTS

2: DEED PLANS



SM

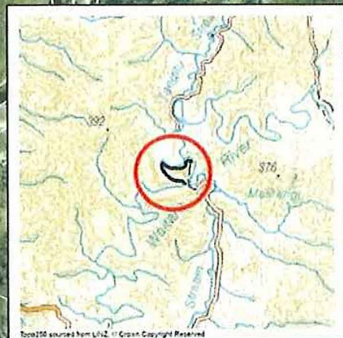
40  
 KA

ATTACHMENTS

2: DEED PLANS



Vest Fee Simple as a Historic Reserve



Crown Land  
Block XIV Upper  
Waitara SD

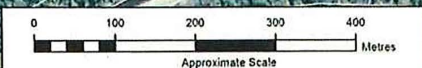
MATAU NORTH ROAD

MATAU NORTH ROAD

NGATOTO ROAD NORTH

Waitara River

5.24 hectares, approximately, being,  
Crown Land Block XIV Upper Waitara SD.  
Subject to survey.



Approximate Scale  
Imagery Sourced from the LINZ Data Service and licensed for re-use under the Creative Commons Attribution 4.0 New Zealand license. Eagle Technology LINZ

OMCR-024-37

Taranaki Land District  
Taranaki Authority  
Stratford District  
Compiled as a graphic representation  
Boundaries are indicative only  
**Te Arawhiti**  
The Office for Māori Relations

**Waitara River No 3 property**  
Areas referred to in the deed of settlement between  
Ngāti Maru and the Crown

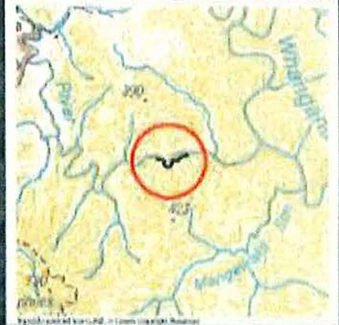
Approved as to boundaries  
for Ngāti Maru  
for and on behalf of the Crown

ATTACHMENTS

2: DEED PLANS

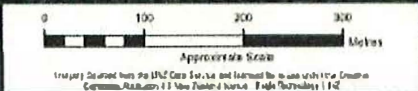


Vest Fee Simple as a Historic Reserve



WHANGAMOMONA ROAD

Crown Land  
Block XV Mahoe SD



3.0 hectares, approximately, being,  
Crown Land Block XV Mahoe SD.  
Subject to survey.

OMCR-024-38

Tōwhaiti Land Ombudsman  
Te Kaitiaki Take Kōwhiri  
Whangamomona District  
Crown Land Block XV Mahoe SD  
The Whangamomona River  
Te Arāwhiti

Whangamomona River property

Areas referred to in the deed of settlement between  
Ngāti Maru and the Crown

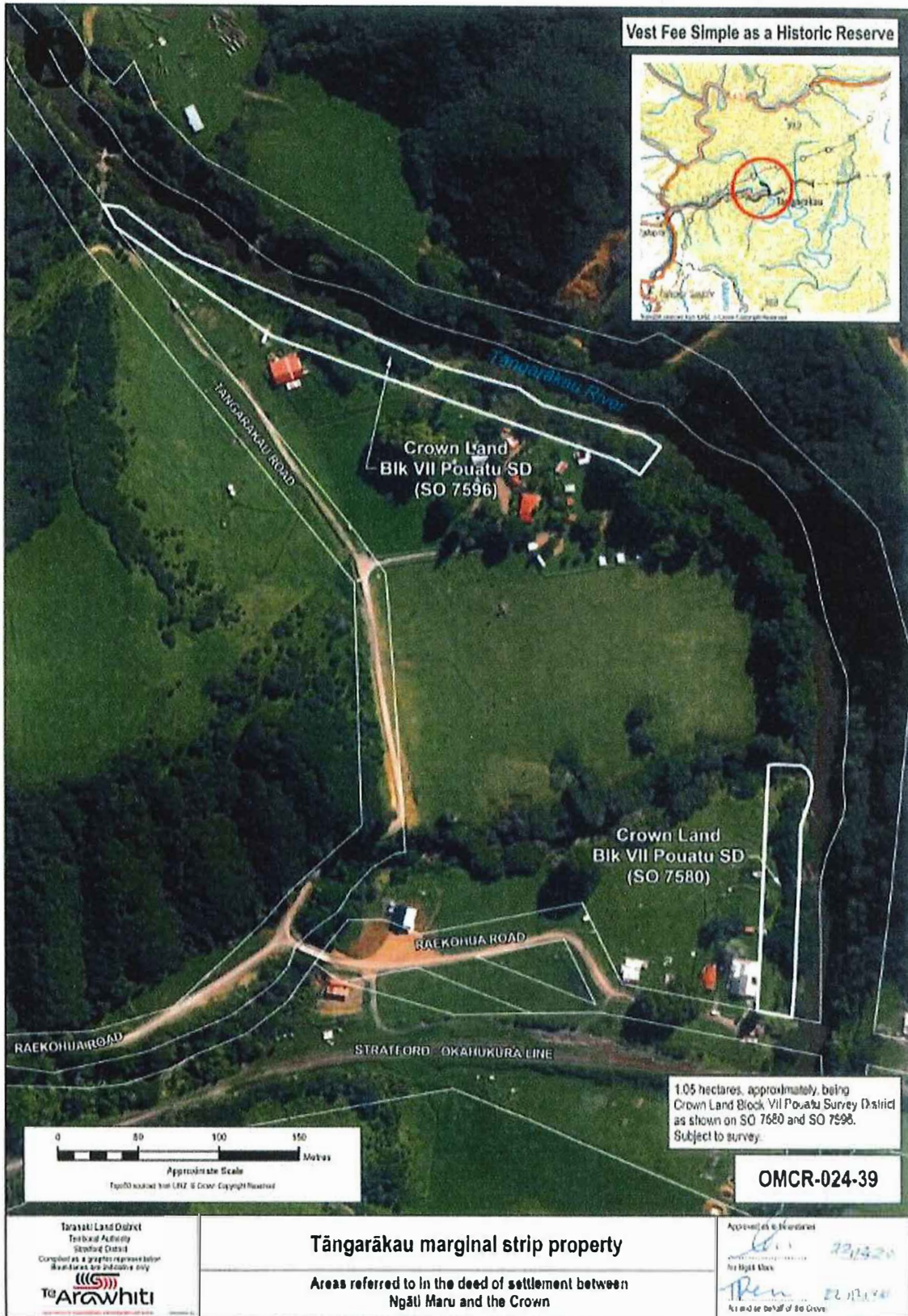
Approved by the Ombudsman  
for Ngāti Maru  
Approved by the Ombudsman  
for and on behalf of the Crown

VM

RS

ATTACHMENTS

2: DEED PLANS



**3 EXCLUSIVE RFR AREA**

*Handwritten mark*

*Handwritten signature*



ATTACHMENTS

---

4 OTHER RFR LAND

VM

✓✓



**ATTACHMENTS**

**4: OTHER RFR LAND**

<b>Property Name/ Address</b>	<b>Description</b>	<b>Land holding Agency</b>
222-228 Broadway, Stratford (PF 677)	<i>Taranaki Land District - Stratford District</i>  0.0468 hectares, more or less, being Lots 33, 34 and 35 DP 5264, and Lots 30, 31 and 32 DP 9800. All record of title TNB2/135 for the fee simple estate.	Land Information New Zealand (Treaty Settlements Landbank)
230 Broadway, Stratford (PF 676)	<i>Taranaki Land District – Stratford District</i>  0.0137 hectares, more or less, being Lot 32 DP 5264 and Lot 29 DP 9800. All record of title TNH4/999 for the fee simple estate.	Land Information New Zealand (Treaty Settlements Landbank)
236 Broadway, Stratford (PF 438)	<i>Taranaki Land District – Stratford District</i>  0.0198 hectares, more or less, being Lot 30 DP 5264 and Lot 27 DP 9800. All record of title TNH4/1001 for the fee simple estate.	Land Information New Zealand (Treaty Settlements Landbank)
232-234 Broadway, Stratford (PF 675)	<i>Taranaki Land District – Stratford District</i>  0.0342 hectares, more or less, being Lot 31 DP 5264 and Lot 28 DP 9800. All record of title TNH4/1000 for the fee simple estate.	Land Information New Zealand (Treaty Settlements Landbank)
250 Broadway, Stratford (PF 437)	<i>Taranaki Land District - Stratford District</i>  0.0172 hectares, more or less, being Lot 25 DP 5264 and Lot 22 DP 9800. All record of title TNH4/1004 for the fee simple estate.	Land Information New Zealand (Treaty Settlements Landbank)
256-260 Broadway, Stratford (PF 674)	<i>Taranaki Land District – Stratford District</i>  0.0174 hectares, more or less, being Lot 23 DP 5264 and Lot 20 DP 9800. All record of title TNJ1/800 for the fee simple estate.	Land Information New Zealand (Treaty Settlements Landbank)

**ATTACHMENTS**

**4: OTHER RFR LAND**

<b>Property Name/ Address</b>	<b>Description</b>	<b>Land holding Agency</b>
252, 262-268 Broadway, Stratford (PF 673)	<i>Taranaki Land District - Stratford District</i>  0.0658 hectares, more or less, being Lots 21, 22 and 24 DP 5264 and Lots 18, 19 and 21 DP 9800. All record of title TNB2/138 for the fee simple estate.	Land Information New Zealand (Treaty Settlements Landbank)
272 Broadway, Stratford (PF 435)	<i>Taranaki Land District - Stratford District</i>  0.0147 hectares, more or less, being Lot 20 DP 5264. All record of title TNJ1/801 for the fee simple estate.	Land Information New Zealand (Treaty Settlements Landbank)
270 Broadway, Stratford (PF 436)	<i>Taranaki Land District – Stratford District</i>  0.0063 hectares, more or less, being Lot 17 DP 9800. All record of title TNB2/139 for the fee simple estate.	Land Information New Zealand (Treaty Settlements Landbank)
278 Broadway, Stratford (PF 672)	<i>Taranaki Land District - Stratford District</i>  0.0223 hectares, more or less, being Lot 16 DP 9800. All record of title TNJ1/886 for the fee simple estate.	Land Information New Zealand (Treaty Settlements Landbank)
280 Broadway, Stratford (PF 671)	<i>Taranaki Land District - Stratford District</i>  0.0337 hectares, more or less, being Lots 41 and 42 DP 5988 and Lots 14 and 15 DP 9800. All record of title TNB2/140 for the fee simple estate.	Land Information New Zealand (Treaty Settlements Landbank)
290 Broadway, Stratford (PF 434)	<i>Taranaki Land District - Stratford District</i>  0.0179 hectares, more or less, being Lot 38 DP 5988 and Lot 11 DP 9800. All record of title TNH4/1005 for the fee simple estate.	Land Information New Zealand (Treaty Settlements Landbank)

**ATTACHMENTS**

**4: OTHER RFR LAND**

<b>Property Name/ Address</b>	<b>Description</b>	<b>Land holding Agency</b>
300 Broadway, Stratford (PF 439)	<i>Taranaki Land District - Stratford District</i>  0.0091 hectares, more or less, being Lot 9 DP 9800. All record of title TNJ1/990 for the fee simple estate.	Land Information New Zealand (Treaty Settlements Landbank)
296 Broadway, Stratford (PF 433)	<i>Taranaki Land District - Stratford District</i>  0.0179 hectares, more or less, being Lot 37 DP 5988 and Lot 10 DP 9800. All record of title TNH4/1006 for the fee simple estate.	Land Information New Zealand (Treaty Settlements Landbank)
298 Broadway, Stratford (PF 678)	<i>Taranaki Land District - Stratford District</i>  0.0094 hectares, more or less, being Lot 12 DP 5264. All record of title TNJ1/988 for the fee simple estate.	Land Information New Zealand (Treaty Settlements Landbank)
304 Broadway, Stratford (PF 670)	<i>Taranaki Land District - Stratford District</i>  0.0175 hectares, more or less, being Lot 11 DP 5264 and Lot 8 DP 9800. All record of title TNJ1/992 for the fee simple estate.	Land Information New Zealand (Treaty Settlements Landbank)
306 Broadway, Stratford (PF 669)	<i>Taranaki Land District - Stratford District</i>  0.0126 hectares, more or less, being Lot 10 DP 5264. All record of title TNJ1/989 for the fee simple estate.	Land Information New Zealand (Treaty Settlements Landbank)
308 Broadway, Stratford (PF 668)	<i>Taranaki Land District – Stratford District</i>  0.0276 hectares, more or less, being Lot 6 DP 9800. All record of title TNJ1/885 for the fee simple estate.  0.0124 hectares, more or less, being Lot 7 DP 9800. All record of title TNJ1/991 for the fee simple estate.	Land Information New Zealand (Treaty Settlements Landbank)

**ATTACHMENTS**

**4: OTHER RFR LAND**

<b>Property Name/ Address</b>	<b>Description</b>	<b>Land holding Agency</b>
310-314 Broadway, Stratford (PF 667)	<i>Taranaki Land District - Stratford District</i>  0.0445 hectares, more or less, being Lots 7 and 8 DP 5264, and Lots 3 and 4 DP 9800. All record of title TNB2/144 for the fee simple estate.	Land Information New Zealand (Treaty Settlements Landbank)
320 Broadway, Stratford (PF 443 and Part 11673))	<i>Taranaki Land District – Stratford District</i>  0.1626 hectares, more or less, being Lots 1, 2, 3 and 4 DP 5264. All record of title TN136/31 for the fee simple estate.  0.0005 hectares, more or less, being Section 2 SO 532053. Part proclamation 33.	Land Information New Zealand
51 Juliet Street, Stratford (PF 444)	<i>Taranaki Land District – Stratford District</i>  0.2155 hectares, more or less, being Part Lot 1 DP 12502. All record of title TNH4/1293 for the fee simple estate.	Land Information New Zealand (Treaty Settlements Landbank)
65-67 Juliet Street, Stratford (PF 448)	<i>Taranaki Land District - Stratford District</i>  0.1148 hectares, more or less, being Lot 1 DP 14586. All record of title TNG4/1371 for the fee simple estate.	Land Information New Zealand (Treaty Settlements Landbank)
69-71 Juliet Street, Stratford (PF 447)	<i>Taranaki Land District - Stratford District</i>  0.1166 hectares, more or less, being Lot 2 DP 10182. All record of title TNC1/103 for the fee simple estate.	Land Information New Zealand (Treaty Settlements Landbank)
Cnr Fenton and Juliet Streets, Stratford (PF 446)	<i>Taranaki Land District - Stratford District</i>  0.1394 hectares, more or less, being Lot 3 DP 12502. All record of title TNE4/510 for the fee simple estate.	Land Information New Zealand (Treaty Settlements Landbank)

**ATTACHMENTS**

**4: OTHER RFR LAND**

<b>Property Name/ Address</b>	<b>Description</b>	<b>Land holding Agency</b>
488R Pembroke Road, Stratford (PF 343)	<i>Taranaki Land District - Stratford District</i>  0.1270 hectares, more or less, being Lot 1 DP 18537. All record of title TNK1/972 for the fee simple estate.	Land Information New Zealand (Treaty Settlements Landbank)
94 Swansea Road, Stratford (PF 1576)	<i>Taranaki Land District - Stratford District</i>  0.0795 hectares, more or less, being Lot 1 DP 377022. All record of title 309600 for the fee simple estate.	Land Information New Zealand (Treaty Settlements Landbank)
54 Brecon Road, Stratford (PF342)	<i>Taranaki Land District - Stratford District</i>  0.0894 hectares, more or less, being Lot 1 DP 18759. All record of title TNK2/375 for the fee simple estate.	Land Information New Zealand (Treaty Settlements Landbank)
49 Pembroke Road, Stratford (PF 1139)	<i>Taranaki Land District – Stratford District</i>  0.0759 hectares, more or less, being Lot 6 DP 7862. All record of title TNL1/632 for the fee simple estate.	Land Information New Zealand (Treaty Settlements Landbank)
9 Essex Street, Stratford (PF 1260)	<i>Taranaki Land District - Stratford District</i>  0.0737 hectares, more or less, being Lot 22 DP 7452. All record of title TNL2/426 for the fee simple estate.	Land Information New Zealand (Treaty Settlements Landbank)
Pohokura Farm, Pohokura (PF 817)	<i>Taranaki Land District - Stratford District</i>  538.5640 hectares, more or less, being Sections 12 and 13 Block VII Ngatimaru Survey District. All record of title TNJ1/1072 for the fee simple estate.	Land Information New Zealand (Treaty Settlements Landbank)

**ATTACHMENTS**

**4: OTHER RFR LAND**

<b>Property Name/ Address</b>	<b>Description</b>	<b>Land holding Agency</b>
Makahu Farm, Te Wera (PF 816)	<i>Taranaki Land District – Stratford District</i>  449.4760 hectares, more or less, being Sections 1, 2 and 3 SO 13197, Sections 1 and 2 SO 13198, Sections 1 and 2 SO 13199, Section 1 SO 13200, Sections 1 and 2 SO 13202 and Section 1 SO 13203. All record of title TNJ1/1085 for the fee simple estate.	Land Information New Zealand (Treaty Settlements Landbank)
Moki Road (11589)	<i>Taranaki Land District – Stratford District</i>  4.07 hectares, approximately, being Crown Land Block II Pouatu Survey District. Part Gazette 1864, p 461.	Land Information New Zealand
Stratford Police Station, 43 Miranda Street, Stratford	<i>Taranaki Land District – Stratford District</i>  0.1432 hectares, more or less, being Sections 395 and 1072 Town of Stratford. All record of title TNH4/20 for the fee simple estate.	New Zealand Police
HSS0032752, Stratford	<i>Taranaki Land District – Stratford District</i>  0.0792 hectares, more or less, being Lot 20 DP 9112. All record of title TNG2/496 for the fee simple estate.	Kāinga Ora–Homes and Communities
HSS0032753, Stratford	<i>Taranaki Land District – Stratford District</i>  0.0607 hectares, more or less, being Lot 4 DP 9948. All record of title TNG2/500 for the fee simple estate.	Kāinga Ora–Homes and Communities
TUS0007685 TUS0007686, Stratford	<i>Taranaki Land District – Stratford District</i>  0.1045 hectares, more or less, being Lot 4 DP 7609. All record of title TNK3/308 for the fee simple estate.	Kāinga Ora–Homes and Communities
HSS0032751, Stratford	<i>Taranaki Land District – Stratford District</i>  0.0653 hectares, more or less, being Lot 5 DP 8917. All record of title TNK3/529 for the fee simple estate.	Kāinga Ora–Homes and Communities

**ATTACHMENTS**

**4: OTHER RFR LAND**

HSS0032235, Stratford	<i>Taranaki Land District – Stratford District</i> 0.0696 hectares, more or less, being Lot 8 DP 7452. All record of title TNE3/826 for the fee simple estate.	Kāinga Ora–Homes and Communities
TUS0007745, Stratford	<i>Taranaki Land District – Stratford District</i> 0.0711 hectares, more or less, being Lot 1 DP 8489. All record of title TNE3/838 for the fee simple estate.	Kāinga Ora–Homes and Communities
TUS0007743 TUS0007744, Stratford	<i>Taranaki Land District – Stratford District</i> 0.1386 hectares, more or less, being Lot 12 DP 7452. All record of title TNE3/828 for the fee simple estate.	Kāinga Ora–Homes and Communities
Te Wera Camp Conservation Area	<i>Taranaki Land District – Stratford District</i> 2.3 hectares, approximately, being Part Lot 8 DP 393. Part <i>Gazette</i> notice 101960.	Department of Conservation
Ohawae Road Conservation Area	<i>Taranaki Land District – Stratford District</i> 44.5154 hectares, more or less, being Section 10 Block VIII Ngatimaru Survey District.	Department of Conservation
Puniwhakau Stock Local Purpose Reserve	<i>Taranaki Land District – Stratford District</i> 2.0234 hectares, more or less, being Section 10 Block III Omoana Survey District. Part <i>Gazette</i> 1898 p 1948.	Department of Conservation
Tarata Village Pound Local Purpose Reserve	<i>Taranaki Land District – New Plymouth District</i> 0.1745 hectares, more or less, being Section 44 Tarata Village. Part <i>Gazette</i> 1888 p 904.	Department of Conservation
Tarata Village Public Buildings Site Local Purpose Reserve	<i>Taranaki Land District – New Plymouth District</i> 0.1049 hectares, more or less, being Part Section 49 Tarata Village. Part <i>Gazette</i> 1888 p 904.	Department of Conservation
Tui Domain Recreation Reserve	<i>Taranaki Land District – Stratford District</i> 2.7316 hectares, more or less, being Section 13 Block X Mahoe Survey District. All <i>Gazette</i> 1956, p 718.	Department of Conservation

**ATTACHMENTS**

**4: OTHER RFR LAND**

Part Tarata Conservation Area	<i>Taranaki Land District – New Plymouth District</i> 1.45 hectares, approximately, being Part Section 13 Block III Huiroa Survey District. Part <i>Gazette</i> 1894, p 1164.	Department of Conservation
Part Whangamomona Domain	<i>Taranaki Land District – Stratford District</i> 0.7082 hectares, more or less, being Section 17 Whangamomona Suburban. Part record of title 497339 for the fee simple estate.	Department of Conservation (as at the date of the deed, the property is vested in trust in the Stratford District Council)
Te Wera Quarry	<i>Taranaki Land District – Stratford District</i> 8.1089 hectares, more or less, being Pohokura 1D. Part proclamation 641.	New Zealand Railways Corporation
Pohokura Railway Strip	<i>Taranaki Land District – Stratford District</i> 2.19 hectares, approximately, being Part Okahukura to Stratford railway adjoining Section 12 Block VII Ngatimaru Survey District.	New Zealand Railways Corporation
Stratford Fire Station	<i>Taranaki Land District – Stratford District</i> 0.4048 hectares, more or less, being Sections 396, 397, 434, and 435 Town of Stratford. All records of title TNE1/506, TNE1/508 and TNE1/507, for the fee simple estate.	Fire and Emergency New Zealand
Toko Fire Station	<i>Taranaki Land District – Stratford District</i> 0.5235 hectares, more or less, being Lots 38, 39 and 41 DP 1967. All records of title TN111/282 and TN151/14, for the fee simple estate.	Fire and Emergency New Zealand
Kaimata School	<i>Taranaki Land District – New Plymouth District</i> 2.8128 hectares, more or less, being Lots 1 and 2 DP 7121. All record of title TN177/35 for the freehold estate.	Ministry of Education
Pembroke School	<i>Taranaki Land District – Stratford District</i> 1.0871 hectares, more or less, being Part Section 53 Manganui District. Balance <i>Gazette</i> notice 414986.	Ministry of Education



**ATTACHMENTS**

**4: OTHER RFR LAND**

<p>Midhirst School</p>	<p><i>Taranaki Land District – Stratford District</i></p> <p>2.4170 hectares, more or less, being Lots 1, 3, 4, 5, 6, 7, 8, 14, 15, 16, 17, 18, 19 and 20 Block I, and Lots 1, 2, 3, 4, 5 and 6 Block II DP 20 and Part Section 35 Manganui District. All record of title TN147/251 for the fee simple estate.</p> <p>0.2074 hectares, more or less, being Lots 2 and 13 Block I DP 20. All proclamation 119401.</p>	<p>Ministry of Education</p>
<p>Makahu School</p>	<p><i>Taranaki Land District – Stratford District</i></p> <p>3.9533 hectares, more or less, being Section 35 Block XV Ngatimaru Survey District. All record of title TN133/284 for the fee simple estate.</p>	<p>Ministry of Education</p>
<p>Marco School</p>	<p><i>Taranaki Land District – Stratford District</i></p> <p>2.4661 hectares, more or less, being Part Section 110 Block XIII Pouatu Survey District. Balance record of title TN47/44 for the fee simple estate.</p>	<p>Ministry of Education</p>
<p>Stratford High School</p>	<p><i>Taranaki Land District – Stratford District</i></p> <p>8.2069 hectares, more or less, being Lots 1 and 2 DP 5744, and Part Lot 2 DP 6052. Balance <i>Gazette</i> notice 401436.1.</p> <p>2.4205 hectares, more or less, being Lots 12 and 13 DP 1874. All proclamation 1643.</p> <p>5.5082 hectares, more or less, being Lot 3 DP 377022 and Part Section 84 Block II Ngaere Survey District. All record of title 309602, for the fee simple estate.</p> <p>12.9499 hectares, more or less, being Part Lot 1 DP 1083. All record of title 724904.</p>	<p>Ministry of Education</p>

**ATTACHMENTS**

**4: OTHER RFR LAND**

Stratford Primary School	<i>Taranaki Land District – Stratford District</i> 5.8400 hectares, more or less, being Part Section 28 Block I Ngaere Survey District. All record of title 770209 for the fee simple estate.	Ministry of Education
Toko School	<i>Taranaki Land District – Stratford District</i> 0.8362 hectares, more or less, being Lot 1 DP 17872. All <i>Gazette</i> notice 418319.1.  0.5089 hectares, more or less, being Sections 28 and 29 Block IV Ngaere Survey District. All <i>Gazette</i> notice 167707.  2.0968 hectares, more or less, being Part Section 7 Block IV Ngaere Survey District. Balance <i>Gazette</i> notice 165922.	Ministry of Education
5 Fairbank Avenue, Stratford (teacher's residence)	<i>Taranaki Land District – Stratford District</i> 0.0768 hectares, more or less, being Part Lot 10 DP 9833. Balance <i>Gazette</i> notice 179128.	Ministry of Education
158 Pembroke Road, Stratford (teacher's residence)	<i>Taranaki Land District – Stratford District</i> 0.0837 hectares, more or less, being Lot 23 DP 9112. All record of title TNH3/245 for the fee simple estate.	Ministry of Education
Institute site, Tarata Road, Tarata	<i>Taranaki Land District – New Plymouth District</i> 0.1012 hectares, more or less, being Section 19 Tarata Village. Part <i>Gazette</i> 1888, p 904.	Office for Māori Crown Relations – Te Arawhiti

ATTACHMENTS

5 SHARED RFR LAND

Property Name/ Address	Description	Land holding Agency
Kohuratahi Road Gravel Reserve	<i>Taranaki Land District - Stratford District</i>  3.4778 hectares, more or less, being Section 20 Block XVI Pouatu Survey District. All <i>Gazette</i> 1960, p 1472.	Department of Conservation
Mangapapa Roadman's Cottage Local Purpose Reserve	<i>Taranaki Land District - Stratford District</i>  1.2335 hectares, more or less, being Lot 1 of Subdivision 1 of Section 11 Block II Pouatu Survey District. All <i>Gazette</i> notice 428712.	Department of Conservation
Tahora Domain	<i>Taranaki Land District - Stratford District</i>  3.0236 hectares, more or less, being Sections 44, 46, 47 48, 65 and Part Section 45 Town of Tahora, and Section 17 Block VI Pouatu Survey District. All record of title 499187 for the fee simple estate.	Department of Conservation
Raekohua Road (11588)	<i>Taranaki Land District - Stratford District</i>  2.4827 hectares, more or less, being Section 1 SO 7031. Part <i>Gazette</i> 1899, p 1361.	Land Information New Zealand
593-595 Raekohua Road (PF 1006)	<i>Taranaki Land District - Stratford District</i>  1.3405 hectares, more or less, being Section 17 Block VII Pouatu Survey District. All record of title TNK3/819 for the fee simple estate.	Land Information New Zealand (Treaty Settlements Landbank)
Mangapapa Road	<i>Taranaki Land District - Stratford District</i>  0.46 hectares, approximately, being Crown Land Block II Pouatu Survey District.	Office for Māori Crown Relations – Te Arawhiti

ATTACHMENTS

6 TAHORA BUS STOP PROPERTY

Property Name/ Address	Description	Land holding Agency
Tahora Bus Stop property (PF 1984)	<i>Taranaki Land District - Stratford District</i>  0.0838 hectares, more or less, being Section 37 Town of Tahora. All record of title 637600 for the fee simple estate.	Land Information New Zealand (Treaty Settlements Landbank)

Vm

✓

ATTACHMENTS

---

**7 DSP SCHOOL HOUSE SITE DIAGRAMS**

jm

ATTACHMENTS

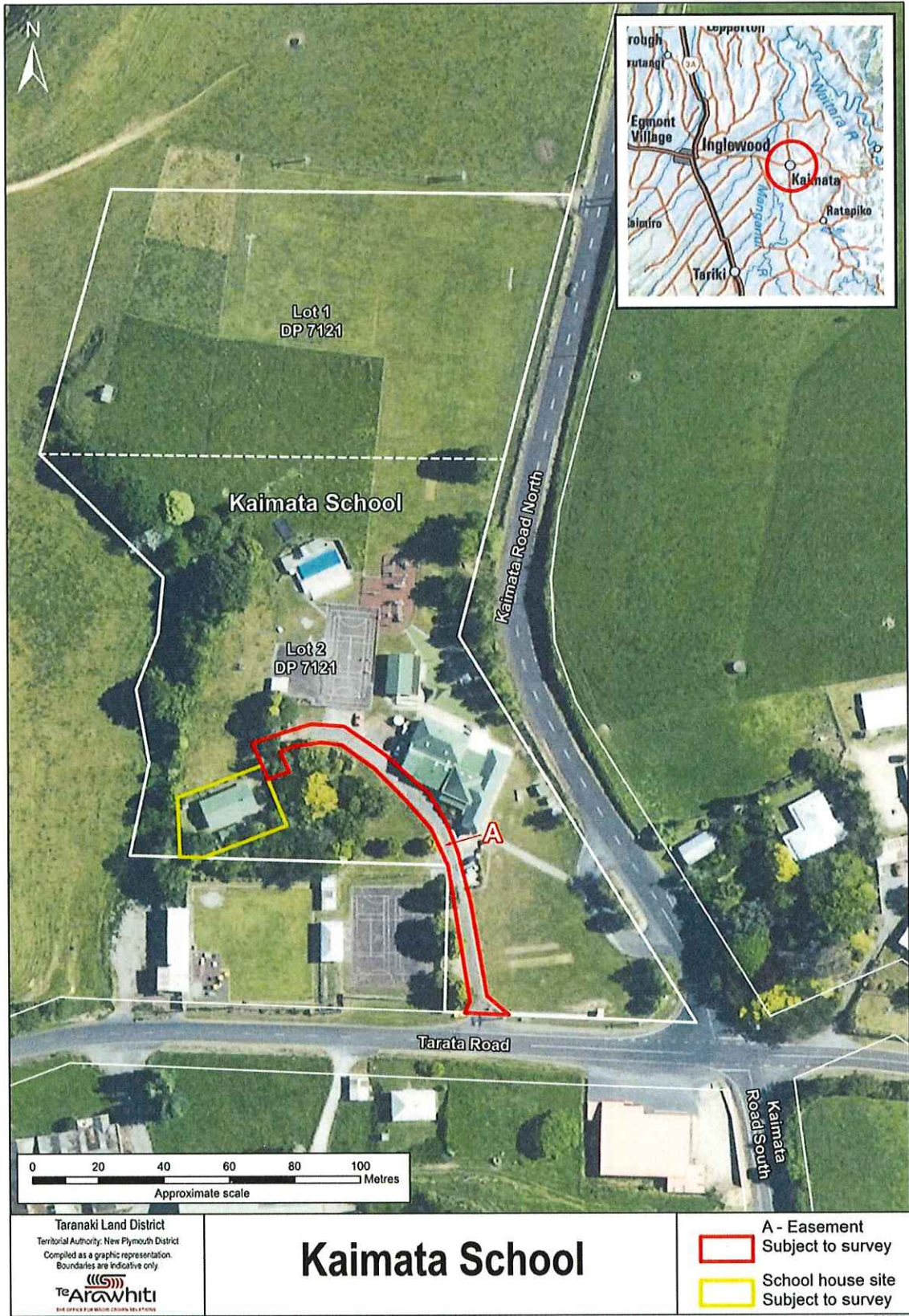
7: DSP SCHOOL HOUSE SITE DIAGRAMS



*AS*

ATTACHMENTS

7: DSP SCHOOL HOUSE SITE DIAGRAMS



LM

KA

ATTACHMENTS

---

**8 DRAFT SETTLEMENT BILL**

*vm*

*LS*