

Election Services
Level 2, 198 Federal Street, Auckland
PO Box 5135, Wellesley Street
Auckland 1141
Phone: 64 9 973 5212
Email: info@electionservices.co.nz

Report to
The Trustees, Mōkia Pātea Waitangi Claims Trust
regarding the

Mōkai Pātea Waitangi Claims Trust Mandate Poll

From the
Chief Returning Officer

21 August 2019



Table of Contents

Outline	2
Background.....	2
Narrative.....	2
APPENDIX 1.....	8
APPENDIX 2.....	9-10
APPENDIX 3.....	11-12
APPENDIX 4.....	13
APPENDIX 5.....	14
APPENDIX 6.....	15
APPENDIX 7.....	16
APPENDIX 8.....	17
APPENDIX 9 (special vote pack).....	18
APPENDIX 10 (special vote pack).....	19
APPENDIX 11 (special vote pack).....	20
APPENDIX 12 (special vote pack).....	21

Outline

The Mōkai Pātea Waitangi Claims Trust Mandate poll concluded on Monday 8 July 2019.

The Trust appointed Independent Election Services, an independent company specialising in the conduct of elections and polls, to undertake the mandate poll process, with Dale Ofoske appointed as Chief Returning Officer.

Voters were able to return their vote by post, online or at a mandate hui.

Of the 2,370 members issued a voting pack, (2,090 as originally advised, 280 special voters) 946 voted using one of the voting methods (408 postal, 538 online). This represents a 39.92% turnout.

This report summarises the electoral process undertaken and assists to explain the results obtained.

This report summarises the poll process.

Background

The Mōkai Pātea Waitangi Claims Trust (MPWCT) seek a Crown-recognised mandate to represent Mōkai Pātea Nui Tonu in the negotiation and settlement of their historical Treaty of Waitangi claim. All members of the claimant community over 18 years of age were invited to vote on the following resolution:

“That the Mōkai Pātea Waitangi Claims Trust is mandated to represent the Mōkai Pātea Nui Tonu claimant community in negotiations with the Crown for the comprehensive settlement of all the historical claims of Mōkai Pātea Nui Tonu.”

The claimant community means all persons who affiliate by way of whakapapa to one or more of the four confederated Mōkai Pātea iwi of Ngāi Te Ohuake, Ngāti Hauiti, Ngāti Whitikaupeka or Ngāti Tamakōpiri and their respective hapū. This includes those who are within the claimant community and have chosen not to register as a member of the Mōkai Pātea Waitangi Claims Trust.

The result of the mandate poll was certified and communicated to the Trust on Friday 12 July 2019.

With the poll now complete, this report details the various electoral processes undertaken, together with relevant statistics.

Narrative

Timetable

A timetable for the mandate poll is attached ([Appendix 1](#)), with the close of voting being 5pm, Monday 8 July 2019.

Key functions and dates were:

Mōkai Pātea membership data provided to Election Services

Monday 27 May 2019

Delivery of voting documents

From Monday 10 June 2019

Voting opens

Monday 10 June 2019

Mandate hui x 6

Between Saturday 15 June – Sunday 23 June 2019

Close of voting

Monday 8 July 2019

Verification of registrations (Membership Committee)

From Wednesday 10 July 2019

Results provided to Mōkai Pātea

Friday 12 July 2019

Public Notice of declaration of results

Saturday 20 July 2019

Members Roll

Members of the claimant community who are enrolled on the MPWCT database were eligible to vote and were sent a voting document and associated mandate voting information by post, from Monday 10 June 2019.

An initial register was provided to us by the Trust on Wednesday 29 May 2019 and contained 2,090 records. The register was checked for duplicates and/or insufficient addresses and a mail file generated, which also containing 2,090 records.

Any person who identifies with the claimant community, and their whakapapa could directly link to the hapū/iwi of Mokāi Pātea, could register up to Monday 8 July 2019, and lists of new members, or members with updated addresses, were provided to us during the voting period, and after the close of voting.

Of the 2,090 members issued a voting pack, 199 were returned 'Gone No Address', or 9.52%.

Mandate Resolution

The mandate resolution was:

“That the Mōkai Pātea Waitangi Claims Trust is mandated to represent the claimant community in negotiations with the Crown for the comprehensive settlement of all of the historical claims of Mōkai Pātea Nui Tonu.”

Members could vote FOR or AGAINST the resolution.

Explanatory information about the mandate resolution (**Appendix 2**) was issued to the voters with their voting pack.

Voting Pack

Voting packs were posted to 2,090 members from Monday 10 June 2019. Each voting pack contained:

- an outer MaxPop envelope;
- an A4 voting paper;
- an A3 mandate resolution information insert;
- a DLE return postage paid envelope.

A sample voting paper is attached (**Appendix 3**).

Voting Process

Each member, upon receiving their voting pack, was able to vote by:

- (i) posting their voting paper back in the postage paid return envelope; or
- (ii) submitting their vote online to the VoteOnline portal; or
- (iii) hand-delivering their vote to the returning officer, present at all mandate hui.

Each voting paper was personalised with:

- (i) the member's name and postal address; and
- (ii) a unique number (in the form of a barcode) for each member; and
- (iii) a login and encrypted password, (for online voting) unique to the member.

Upon returning a voting paper through the post, the member's unique number was used for undertaking the roll scrutiny process (to prevent duplicate voting and to maintain the secrecy of the vote).

Upon submitting an electronic vote, the VoteOnline system recorded and receipted the vote, however, roll scrutiny for electronic votes occurred after voting had closed (as the online voting had to remain operational for the entire voting period).

Special Voting

Special voting packs were available for anyone over the age of 18 from the claimant community who requested them, and:

- were on the Members Register but had insufficient address details, such that we were unable to issue a voting pack to them in the initial mail-out;
- registered during the voting period between 10 June and 8 July 2019.

Replacement voting packs were available for members who had lost, spoilt or did not receive their original voting pack.

Special votes were available upon request by contacting the returning office directly, by contacting the Trust office (details forwarded to the returning officer), or by obtaining one at one of the mandate hui.

Included in the special voting pack was ([Appendices 9-12](#))

- a personalised special voting paper which included a unique and encrypted login and password for voting online;
- a mandate information insert;
- a Mōkia Pātea special vote registration form;
- a postage paid envelope (provided for those who wished to return their vote and registration form by post).

Each special voting document issued, had a unique barcode associated to the individual voter, with a pre-fix of "SP".

During the voting period all registration forms received by the returning officer were forwarded to the Trust.

Special Vote Management

Special votes were available to those who were not issued a voting pack at the beginning of the voting period.

All members of the claimant community who were 18 years or over at the date of the advertising of the mandate voting process could take part in the voting process.

A person who had their whakapapa verified by the Membership Committee as a member of the claimant community was entitled to have their vote counted regardless of whether or not the voter is registered with the Trust.

Issuing

Special votes were available at any of the mandate hui, or by contacting the returning officer.

Receiving

Special votes returned by post were placed aside until the close of voting and registration verification.

Special votes received online were similarly dealt with.

After the close of voting, all special votes registration forms were required to be verified by the Membership Committee of the Mōkai Pātea Waitangi Claims Trust (those properly authorised to undertake this).

Reminder to vote

Following discussion with the Trust, a "reminder to vote" notice was posted on 2 July 2019 to registered members who had not yet received a vote (1,056 posted and 1,034 email by the Trust).

A copy of the reminder to vote is attached ([Appendix 4](#)).

Voter Turnout

Of the 2,090 ordinary voting packs issued, 724 votes were returned (423 online and 301 postal). This represented a voter turnout of 34.64%.

During the voting period 695 special voting packs were issued by post, except for the final week of voting period where they were emailed (due to the uncertainty of postal delivery).

Of the 695 special votes issued, 477 votes were returned (269 online and 208 by post). This represents a special voter turnout of 68.63%.

Special voters were required to complete a registration form and submit it to the Trust. They could submit it in the postage paid envelope provided (with their postal vote), or by returning it direct to the Trust. For a special vote to be counted, the registration

form was required to be verified by the Mōkai Pātea Waitangi Claims Trust Membership Committee.

Voting closed on Monday 8 July 2019 at 5pm. On 12 July 2019 the returning office received notification from the Trust that a total of 326 registrations had been verified and accepted and 20 had been declined.

We cross referenced the 477 special votes received against the 326 accepted verified registrations. Of the 477 special votes received 222 were able to be counted. The balance of 255 special votes consequently could not be counted.

Reasons that 255 special votes could not be counted, include:

- i. they were not on the original Mōkai Pātea Waitangi Claims Trust database;
- ii. they had not submitted a registration form;
- iii. their registration form had not been verified;
- iv. Attempts at plural voting.

The overall turnout of 946 voters from 2370 members represents a 39.92% turnout. This is considered a reasonably good turnout when compared to other iwi mandate polls.

A schedule of the number of daily returned voting papers over the voting period is attached ([Appendix 5](#)).

Counting of Votes

Voting closed at 5pm on Monday 8 July 2019.

The opening and counting of returned votes were undertaken from our premises in Auckland progressively during the voting period.

All votes were processed twice, and any differences cross-checked. No counting or tallying of votes was undertaken until after the close of voting, and until we received notification of accepted registrations.

Once notification from the Trust was received, all votes (ordinary and allowed special votes) were collated and counted. This produced a final result.

Results

The final result of the poll is:

Mandate resolution: *‘That Mōkai Pātea Waitangi Claims Trust is mandated to represent the claimant community in negotiations with the Crown for the comprehensive settlement of all the historical claims of Mōkai Pātea Nui Tonu’.*

	Total votes	%
FOR	758	80.13%
AGAINST	183	19.34%
Informal	0	0.00%
Blank	5	0.53%
Total	946	100.00%

The result was certified and communicated to the Trust on Friday 12 July 2019.

As the majority of votes received voted YES to the mandate resolution, the resolution is declared passed.

A copy of the final result of the poll is attached ([Appendix 6](#)).

Public Notices

The following public notice was made on behalf of the Trust ([Appendix 7](#)):

- (i) Declaration of Result of Mandate Poll from Saturday 20 July 2019:
 - a. Christchurch Press,
 - b. The Dominion Post,
 - c. Hawkes Bay Today,
 - d. New Zealand Herald,
 - e. Waikato Times,
 - f. Whanganui Chronicle.

Summary

The Mōkai Pātea Waitangi Claims Trust mandate poll concluded on Monday 8 July 2019.

The majority of votes received voted in support of the mandate resolution and is accordingly declared passed.

We trust that the Mōkai Pātea Waitangi Claims Trust is satisfied with our service delivery and the overall conduct of this poll process.

Thank you for the opportunity to provide an independent and impartial electoral service to the Trust, and we look forward to being of service to the Trust in the future.

Author:



Dale Ofoske
 Chief Returning Officer
 Election Services

APPENDIX 1



TIMETABLE

Mōkai Pātea Waitangi Claims Trust

Mandate Poll

8 JULY 2019

MONDAY 8 JULY 2019

(estimated number of members: 1,500-3,000)

Monday 27 May 2019	Membership data by MPWCT
Wednesday 5 June 2019	Voting packs lodged with NZ Post
Monday 10 June 2019	VOTING PERIOD OPENS
Saturday 15 June 2019	Taihape hui (10 am) Whanganui hui (4 pm)
Sunday 16 June 2019	Wellington hui (1 pm)
Friday 21 June 2019	Taupo/Turangī hui (6 pm)
Saturday 22 June 2019	Hastings hui (11 am)
Sunday 23 June 2019	Auckland hui (11 am)
Friday 28 June - Monday 1 July 2019	Whakapapa/affiliation of unregistered or newly registered special voters verified by MPWCT
Monday 8 July 2019	CLOSE OF VOTING (5 PM)
Wednesday 10 July 2019	Results provided to MPWCT
Saturday 13 July - Wednesday 17 July 2019	Public notice of declaration of results

P4

Timeline

- **1840** Te Tiriti o Waitangi/Mōkai Pātea Hapu / iwi historically and continue to be affected by acts and omissions of the Crown that are inconsistent with Te Tiriti.
- **1880's** Confederated Collective Mōkai Pātea Iwi oppose land alienation and propose options to the Crown for Tribal management of land.
- **1920's** Land alienation, culminates in the loss of cultural, social and economic wellbeing. Collective Tribal Authority and structures for Hapu / iwi of Mōkai Pātea during this decade collapse. Alignment with neighbouring iwi creates unintended loss of Mōkai Pātea identity.
- **1980's** Re-establishment of the Identity & Cultural Revitalisation of Hapu / iwi of Mōkai Pātea
- **1995** Te Rōnanga o Ngāti Hauti Established
- **2000** Te Rōnanga o Ngāti Whītōkaupēka Established
- **2001** Te Rōnanga o Ngāti Tamakōpūri Established
- **2004** Mōkai Pātea Claims Committee established to plan for Treaty Settlement on behalf of the Confederated Hapu and iwi of Mōkai Pātea
- **2010** Te Rōnanga o Ngāti Te Ohuake Established
- **2011** Mōkai Pātea Nui Tonu Establish Mōkai Pātea Waitangi Claims Trust
- **2016** Waitangi Tribunal Kōrero Tuku Iho Hearings 1 & 2
- **2017** Waitangi Tribunal Substantive Hearings 3 & 4
Mōkai Pātea Waitangi Claims Trust Draft Mandate Strategy published for submissions (DEC 2017)
- **2018** Waitangi Tribunal Substantive Hearings 5 – 8. All Mōkai Pātea Iwi Claimants evidence heard. Further development of the DRAFT Mōkai Pātea Waitangi Claims Trust Mandate Strategy
- **2019** Waitangi Tribunal Substantive Hearings 9 & 10. Mōkai Pātea Waitangi Claims Trust Mandate Vote

Mandate Hui 2019

- Saturday 15 June, 10am-12pm, Old Taihape Hospital Carerteria, Hospital Road, Taihape
- Saturday 15 June, 5pm-7pm, Kingsgate Hotel, 397 Victoria Avenue, Whanganui
- Sunday 16 June, 1pm-3pm, The Porirua Club, Sparts Room, 1 Lodge Place, Porirua
- Friday 21 June, 5:30pm - 7:30pm, Tokaanu Hotel Conference Room, 525 State Highway 4, Turangi
- Saturday 22 June, 11am-1pm, Taradale Town Hall, Lee Road, Taradale
- Sunday 23 June, 11am-1pm, Holiday Inn Auckland Airport, 2 Ascot Road Airport Oaks, Auckland

Need More Information

www.mokaipateacclaims.maori.nz

About voting and obtaining a vote pack please contact:

Returning Officer, Dale Ofsooke, Ph 0800 922 822 info@electionservices.co.nz

About the Mandate Strategy please contact:

Programme Manager, Lavinia Jacobsen, Ph 0800 388 488 mpwact@mokaipateaservices.org.nz

PI

All members of the Mōkai Pātea Claimant Community 18 years and older are invited to vote on the following

Resolution

That the Mōkai Pātea Waitangi Claims Trust is mandated to represent the claimant community in negotiations with the Crown for the comprehensive settlement of all of the historical claims of Mōkai Pātea Nui Tonu.

Voting opens 10 June 2019 and closes 5pm on 8 July 2019

Mōkai Pātea Waitangi Claims Trust

In December 2017, Mōkai Pātea Waitangi Claims Trust (the Trust) advertised a draft mandate strategy for claimant community submissions and feedback. After analysis of the submissions and facilitated meetings with the Ngāti Hinemanu me Ngāti Paki Heritage Trust, the Trust developed a mandate strategy with particular reference to how those of Ngāti Hinemanu descent should be accommodated within the representation structure of Mōkai Pātea Nui Tonu. The mandate strategy notes mandate voting hui and mandate voting process by which the Trust seeks a mandate from the Mōkai Pātea claimant community to represent them in Treaty Settlement negotiations with the Crown.

The Trust seeks to negotiate and settle all the historical Treaty claims of Mōkai Pātea Nui Tonu, whether registered with the Waitangi Tribunal or not, for Crown breaches of Te Tiriti o Waitangi/ the Treaty of Waitangi that occurred prior to 21 September 1992. Insofar as the claims relate to the claimant community: Wai 37; Wai 263; Wai 378; Wai 382; Wai 385; Wai 400; Wai 401; Wai 581; Wai 588; Wai 647; Wai 662; Wai 933; Wai 1196; Wai 1632; Wai 1639; Wai 1705; Wai 1835; Wai 1868; Wai 1888; Wai 2157.

**Mōkai Pātea
Kia Tū Whakaperei**

- Stand Tall Proud and Strong -



P2

How to Vote



Mail

Fill in the voting form and return using the supplied reply envelope



Online

You will be given the option to vote online by following the instructions in your voting pack



Hui

You can attend a mandate voting hui and place your vote in the ballot box provided at the hui

Special Vote

Those who were not on the Trust's register at the beginning of the voting period need to make a special vote.

You will also have to make a special vote if you:

Did not receive a voting pack in the mail

Want to vote at a hui but did not bring your voting form with you

Special vote forms will be available at mandate voting hui, online, or by request to Independent Election Services Limited. Special votes can be cast at a mandate voting hui, through online voting and by postal vote. Special votes will require you to identify your Mōkai Pātea Nui Tonu whakapapa for verification, by the Mōkai Pātea Membership Committee.

For information about making a special vote, please contact the Independent Returning Officer, Dale Ofosoke, Independent Elections Services Limited, Freephone 0800 922 822, or email info@electionservices.co.nz

Who Can Vote?

All members of the claimant community who are aged 18 years or over at the date of advertisement of the mandate voting process. A person who has had their whakapapa verified by the Membership Committee as a member of the claimant community is entitled to vote regardless of whether or not the voter is registered with the Mōkai Pātea Waitangi Claims Trust. The Claimant Community means all persons who affiliate by way of verified whakapapa to one or more of the four confederated Mōkai Pātea iwi of Ngāi Te Ohuake, Ngāti Hauti, Ngāti Whitiaka or Ngāti Tamakōpiri and their respective hapū.

P3

The Trust's Mandating Process

WHAT IS A MANDATE

A mandate is an authorisation by a person or group to another group to take a certain course of action.

MANDATE PROCESS

- Step 1 - Produce a draft mandate strategy for Crown support, publication and submissions
- Step 2 - Analyse submissions, consult as needed with submitters, and produce a mandate strategy for Crown support
- Step 3 - Undertake claimant community mandate voting process incorporating mandate voting hui, online voting and postal vote
- Step 4 - Advertise mandate voting process
- Step 5 - Publish mandate voting result
- Step 6 - Develop a draft deed of mandate for publication
- Step 7 - With Crown support, publish the draft deed of mandate for submissions
- Step 8 - Analyse submissions, consult as needed with submitters, and provide the deed of mandate for Crown consideration

NEGOTIATIONS PREPARATION

Appoint negotiators as described in the Trust's mandate strategy.

Confirm a Trust Board consisting of a maximum of nine Trustees to represent the collective interests of Mōkai Pātea Nui Tonu's four rūnanga, as follows:

- Te Rūnanga o Ngāi Te Ohuake delegates appointment of two Trust Board Trustees;
- Te Rūnanga o Ngāti Whitiaka delegates appointment of two Trust Board Trustees;
- Te Rūnanga o Ngāti Tamakōpiri delegates appointment of two Trust Board Trustees; and


Together, the chairpersons of the four rūnanga may appoint, following due consultation with their delegates and the Taumatā Tikanga, one Trustee as the Tumu Mōkai Cultural Leader representing all of Mōkai Pātea Nui Tonu.

HOW HAS THE MANDATE STRATEGY BEEN SET OUT

- PART A - Introduction
- PART B - Definitions
- PART C - Mōkai Pātea Nui Tonu
- PART D - Hāpu of Mōkai Pātea Nui Tonu
- PART E - Area of Interest
- PART F - Claims
- PART G - Waitangi Tribunal Process and Comprehensive Negotiations
- PART H - Structure of the Trust Seeking Mandate
- PART I - Accountability
- PART J - Appointment & Proceedings of Negotiators
- PART K - Mōkai Pātea Register
- PART L - Mandating Hui Process
- PART M - Mandate Voting Process
- PART N - Dispute Resolution Process / Amendment / Withdrawal
- PART O - List of Appendices

WHERE CAN YOU FIND THE MANDATE STRATEGY AND THE DEED OF TRUST

Copies of the Mōkai Pātea Waitangi Claims Trust's mandate strategy are available on Te Arawhiti website www.teara.govt.nz, Te Puni Kōiri website www.tpk.govt.nz, Mōkai Pātea Waitangi Claims Trust website www.mokaipateclaims.maori.nz.



VOTING PAPER

READ THIS FIRST

As a member of the claimant community, aged 18 years or over at the date of advertisement of the mandate voting process and a person who has had their whakapapa verified by the Membership Committee as being a member of the claimant community, you are entitled to vote regardless of whether or not you are registered with the Mōkai Pātea Waitangi Claims Trust.

The Mandate is explained in the accompanying information.

If you make a mistake that you cannot clearly correct, contact the Returning Officer and ask for a new voting paper.

BEFORE YOU VOTE

Read the accompanying material then decide which of the three ways you will vote (see the choices on the left side panel).

Carefully read the resolution and the instructions above the resolution on how to vote.

AFTER YOU VOTE

Tear along the perforation and discard the left panel.

Post your vote to the Returning Officer or take it to a mandate hui and place it in the ballot box or submit your vote online.

Voting closes at 5 pm on Monday 8 July 2019.

ALL ENQUIRIES

Please phone 09 973 5212 or 0800 922 822

Date Ofoske, Returning Officer, Independent Election Services Ltd, PO Box 5135, Wellesley Street, Auckland 1141

MOKAI PĀTEA WAITANGI CLAIMS TRUST

Mandate Vote

How to vote: place a tick ✓ clearly within one box after the resolution below.

RESOLUTION

That the Mōkai Pātea Waitangi Claims Trust is mandated to represent the claimant community in negotiations with the Crown for the comprehensive settlement of all of the historical claims of Mōkai Pātea Nui Tonu.

FOR

AGAINST


3 Ways to Vote

you can only use ONE of these methods to vote

vote by post

Tick your preferred option (tear off instruction panel)


Post the voting paper in the return envelope



or

vote at a hui

Place your completed voting paper in the ballot box at a mandate hui




or

vote online

Go to www.voteonline.co.nz/mpwict2019

Enter your voter ID and password (shown on reverse side of this paper). Follow the online instructions on how to vote




Voting Closes

5 PM, MONDAY 8 JULY 2019

No votes will be accepted after this time

If voting by post it is recommended that your voting paper be posted no later than Tuesday 2 July 2019.

DETACH BEFORE RETURNING - TEAR HERE



PANEL 1



<<BARCODE>>

<<NAME>>

<<ADDRESS_1>>

<<ADDRESS_2>>

<<ADDRESS_3>>

<<ADDRESS_4>>

<<ADDRESS_5>>

Tear Along Perforation

PANEL 2

TO VOTE ONLINE

To vote online, go to www.voteonline.co.nz/mpwct2019

Log in by entering the following details, which are unique to you.

Your Access Code is <<ACCESS_CODE>>

Your Password is <<PASSWORD>>

NOTE: All passwords are case sensitive - letters must be entered in capitals.

Voting must be completed by **5pm, Monday 8 July 2019**.

To vote by a different method follow the instructions on the reverse side of this page.

Fold Here



<<BARCODE>>

THE RETURNING OFFICER
MŌKAI PĀTEA WAITANGI CLAIMS TRUST
C/- PO BOX 5135
WELLESLEY STREET
AUCKLAND 1141

APPENDIX 4

REMINDER TO VOTE IN THE MŌKAI PĀTEA WAITANGI CLAIMS TRUST MANDATE VOTE

Tēnā koe

You should have received your voting papers in June for this Mandate Vote!

Voting opened on the 10 June 2019 and closes 5 pm on 8 July 2019.

If you have already voted, thank you for voting and please disregard this reminder.

Haven't voted yet? It's not too late. Use the instructions posted to you in your vote pack and vote online now so your vote is received before 5pm on 8 July 2019.

Don't have a voting pack? If you are 18 years and older and have not received your vote pack it is not too late. Phone Election Services 0800 922 822 within Aotearoa and they will issue a pack to you. When you receive your pack, you can vote online. It is quick and easy to vote online. If you prefer to post your vote back, it must reach Election Services by 5 pm on 8 July 2019 to be counted.

Not on our database? To be eligible to have your vote counted you must be 18 years and older, and your whakapapa must directly link you to the hapū/iwi of Mōkai Pātea. The membership committee of Mōkai Pātea Waitangi Claims Trust will check your whakapapa is eligible before your vote is counted. You do not have to register as a member of the Trust to vote.

You are being asked to vote For or Against the resolution "that the Mōkai Pātea Waitangi Claims Trust is mandated to represent the claimant community in negotiations with the Crown for the comprehensive settlement of all of the historical claims of Mōkai Pātea Nui Tonu". You can find out about the Mandate Strategy and Mandate Vote on the website www.mokaipateaclaims.maori.nz/documents.



VOTE BEFORE 5 PM 8 JULY 2019

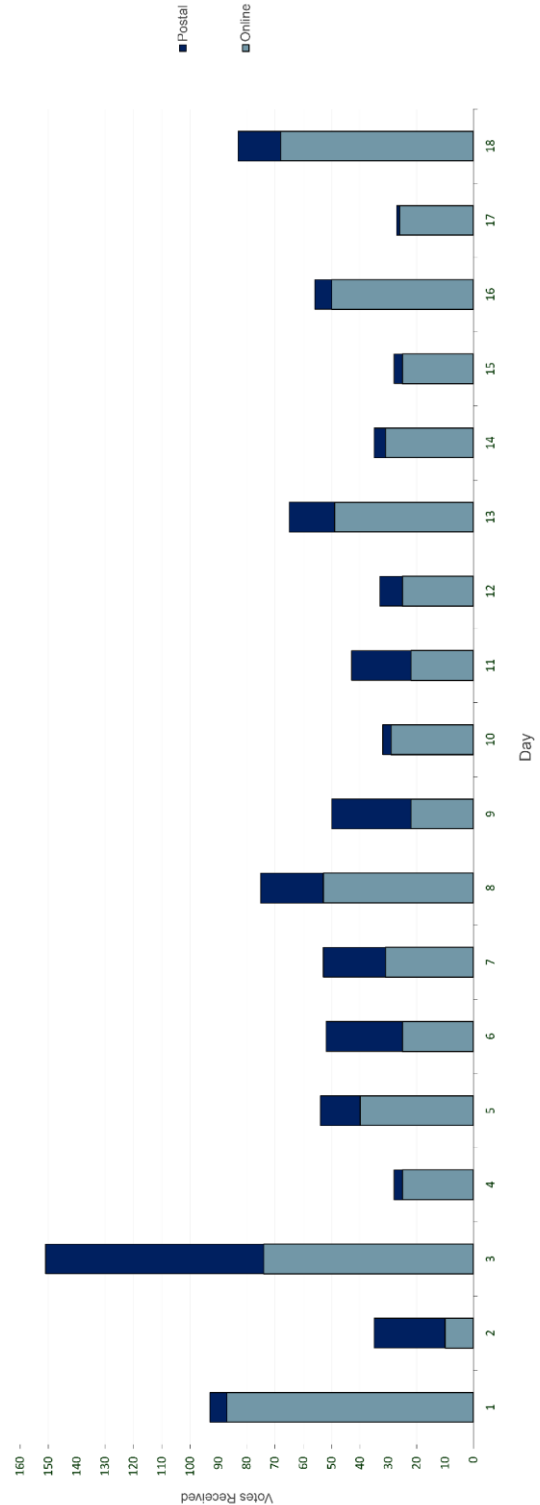


**Mōkai Pātea Waitangi Claims Trust
Mandate Poll
Daily voting document returns
8 July 2019**

APPENDIX 5

Number of voting papers issued 2,370	Postal & Ballot Box													Election Day		Total Votes Counted			
	13-Jun	14-Jun	17-Jun	18-Jun	19-Jun	20-Jun	21-Jun	24-Jun	25-Jun	26-Jun	27-Jun	28-Jun	1-Jul	2-Jul	3-Jul		4-Jul	5-Jul	8-Jul
Postal Votes	6	25	77	3	14	27	22	22	28	3	21	8	16	4	3	6	1	15	301
Online Votes	87	10	74	25	40	25	31	53	22	29	22	25	49	31	25	50	26	68	692
Daily Total	93	35	151	28	54	52	53	75	50	32	43	33	65	35	28	56	27	83	993
ACCUM TOTAL	93	128	279	307	361	413	466	541	591	623	666	699	764	799	827	883	910	993	946
DAILY %	3.92%	1.48%	6.37%	1.18%	2.28%	2.19%	2.24%	3.16%	2.11%	1.35%	1.81%	1.39%	2.74%	1.48%	1.18%	2.36%	1.14%	3.50%	Total no. of ordinary votes and allowed special votes
ACCUM %	3.92%	5.40%	11.77%	12.95%	15.23%	17.43%	19.66%	22.83%	24.94%	26.29%	28.10%	29.49%	32.24%	33.71%	34.89%	37.26%	38.40%	41.90%	Total % of ordinary votes and allowed special votes

Mōkai Pātea Waitangi Claims Trust - Mandate Poll 2019



APPENDIX 6


Result:	Mōkai Pātea Waitangi Claims Trust
Result Type:	Final Result
Candidates sorted by:	Votes
Generated on:	Friday 12 July 2019 18:06:41
Elections:	Mōkai Pātea Waitangi Claims Trust

Election:	09 - Mōkai Pātea Waitangi Claims Trust		
Issue:	Mandate Poll		
Number of vacancies:	1		
Candidate Voting ID	Candidate Name	Total Votes	%
101	FOR	758	80.13%
102	AGAINST	183	19.34%
103	Informal	0	0.00%
104	Blank	5	0.53%

946

Voting papers issued	2370
Votes Total	946
% Voting return	39.92%

APPENDIX 7

MŌKAI PĀTEA WAITANGI CLAIMS TRUST 2019 DECLARATION OF RESULT OF MANDATE POLL	
I hereby declare the result of the Mandate Poll held on 8 July 2019.	
RESOLUTION:	
That the Mōkai Pātea Waitangi Claims Trust is mandated to represent the claimant community in negotiations with the Crown for the comprehensive settlement of all of the historical claims of Mōkai Pātea Nui Tonu.	
Option	Votes Received
FOR	758
AGAINST	183
<i>(Blank votes 5)</i>	
2,370 voting papers were issued and 946 votes were cast, this being a 39.92% return.	
Of those who cast their vote, 80.13% were in favour of the Mōkai Pātea Waitangi Claims Trust's mandate proposal.	
Dated at Auckland, 19 July 2019.	
Dale Ofoske, Returning Officer Independent Election Services Ltd <i>for</i> Mōkai Pātea Waitangi Claims Trust	

APPENDIX 8 – Special Vote Pack Contents (printed A3)

P4 Timeline

- 1840** – Te Tiriti o Waitangi Mōkai Pātea Hapū / Iwi historically and continue to be affected by acts and omissions of the Crown that are inconsistent with Te Tiriti.
- 1880's** – Confederated Collective Mōkai Pātea Iwi oppose land alienation and propose options to the Crown for Tribal management of land.
- 1920's** – Land alienation, culminates in the loss of cultural, social and economic wellbeing. Collective Tribal Authority and structures for Hāpu / Iwi of Mōkai Pātea during this decade collapse. Alignment with neighbouring Iwi creates unintended loss of Mōkai Pātea identity.
- 1980's** – Re-establishment of the Identity & Cultural Revitalisation of Hāpu / Iwi of Mōkai Pātea
- 1995** – Te Rōnanga o Ngāti Hauiti Established
- 2000** – Te Rōnanga o Ngāti Whitiākepa Established
- 2001** – Te Rōnanga o Ngāti Tamakōpiri Established
- 2004** – Mōkai Pātea Claims Committee established to plan for Treaty Settlement on behalf of the confederated Hapū and Iwi of Mōkai Pātea
- 2010** – Te Rōnanga o Ngāti Te Ohuake Established
- 2011** – Mōkai Pātea Nui Tonu Establish Mōkai Pātea Waitangi Claims Trust
- 2016** – Waitangi Tribunal Kōrero Tuku Iho Hearings 1 & 2
- 2017** – Waitangi Tribunal Substantive Hearings 3 & 4
Mōkai Pātea Waitangi Claims Trust Draft Mandate Strategy published for submissions (DEC 2017)
- 2018** – Waitangi Tribunal Substantive Hearings 5 – 8. All Mōkai Pātea Wai Claimants evidence heard. Further development of the DRAFT Mōkai Pātea Waitangi Claims Trust Mandate Strategy
- 2019** – Waitangi Tribunal Substantive Hearings 9 & 10. Mōkai Pātea Waitangi Claims Trust Mandate Vote

Mandate Hui 2019

Saturday 15 June, 10am-12pm, Old Taihape Hospital Cafeteria, Hospital Road, Taihape

Saturday 16 June, 1pm-3pm, Kingsgate Hotel, 397 Victoria Avenue, Whangārua

Sunday 17 June, 1pm-3pm, The Peninsula Club, Sports Room, 1 Lodge Place, Porirua

Friday 21 June, 5:30pm – 7:30pm, Tokaanu Hotel Conference Room, 525 State Highway 4, Turangi

Saturday 22 June, 11am-1pm, Taradale Town Hall, Lee Road, Taradale

Sunday 23 June, 11am-1pm, Holiday Inn Auckland Airport, 2 Ascot Road Airport Oaks, Auckland

P1 All members of the Mōkai Pātea Claimant Community 18 years and older are invited to vote on the following

Resolution

That the Mōkai Pātea Waitangi Claims Trust is mandated to represent the claimant community in negotiations with the Crown for the comprehensive settlement of all of the historical claims of Mōkai Pātea Nui Tonu.

Voting opens 10 June 2019 and closes 5pm on 8 July 2019

Mōkai Pātea Waitangi Claims Trust

In December 2017, Mōkai Pātea Waitangi Claims Trust (the Trust) advertised a draft mandate strategy for claimant community submissions and feedback. After analysis of the submissions and facilitated meetings with the Ngāti Hinemanu me Ngāti Paki Heritage Trust, the Trust developed a mandate strategy with particular reference to how those of Ngāti Hinemanu descent should be accommodated within the representation structure of Mōkai Pātea Nui Tonu. The mandate strategy notes mandate voting hui and mandate voting process by which the Trust seeks a mandate from the Mōkai Pātea claimant community to represent them in Treaty Settlement negotiations with the Crown.

The Trust seeks to negotiate and settle all the historical Treaty claims of Mōkai Pātea Nui Tonu, whether registered with the Waitangi Tribunal or not, for Crown breaches of Te Tiriti o Waitangi/ the Treaty of Waitangi that occurred prior to 21 September 1992, insofar as the claims relate to the claimant community; Wai 37; Wai 263; Wai 378, Wai 382; Wai 385; Wai 400; Wai 401; Wai 581; Wai 588; Wai 647; Wai 662; Wai 933; Wai 1196; Wai 1632; Wai 1639; Wai 1705; Wai 1835; Wai 1868; Wai 1888; Wai 2157.

Mōkai Pātea

Kia Tū Whakaperei

- Stand Tall Proud and Strong -

P2 How to Vote

Mail

Fill in the voting form and return using the supplied reply envelope

Online

You will be given the option to vote online by following the instructions in your voting pack

Hui

You can attend a mandate voting hui and place your vote in the ballot box provided at the hui

Special Vote

Those who were not on the Trust's register at the beginning of the voting period need to make a special vote.

You will also have to make a special vote if you:

- Did not receive a voting pack in the mail
- Want to vote at a hui but did not bring your voting form with you

Special vote forms will be available at mandate voting hui, online, or by request to Independent Election Services Limited. Special votes can be cast at a mandate voting hui, through online voting and by postal vote. Special votes will require you to identify your Mōkai Pātea Nui Tonu whakapapa for verification, by the Mōkai Pātea Membership Committee.

For information about making a special vote, please contact the Independent Returning Officer, Dale Ofosoke, Independent Elections Services Limited, Freephone 0800 922 822, or email info@electionservices.co.nz

P3 The Trust's Mandating Process

WHAT IS A MANDATE
A mandate is an authorisation by a person or group to another group to take a certain course of action.

MANDATE PROCESS

- Step 1 – Produce a draft mandate strategy for Crown support, publication and submissions
- Step 2 – Analyse submissions, consult as needed with submitters, and produce a mandate strategy for Crown support
- Step 3 – Undertake claimant community mandate voting process incorporating mandate voting hui, online voting and postal vote
- Step 4 – Advertise mandate voting process
- Step 5 – Publish mandate voting result
- Step 6 – Develop a draft deed of mandate for publication
- Step 7 – With Crown support, publish the draft deed of mandate for submissions
- Step 8 – Analyse submissions, consult as needed with submitters, and provide the deed of mandate for Crown consideration

NEGOTIATIONS PREPARATION
Appoint negotiators as described in the Trust's mandate strategy.

Confirm a Trust Board consisting of a maximum of nine Trustees to represent the collective interests of Mōkai Pātea Nui Tonu's four rōnanga, as follows:

- Te Rōnanga o Ngāti Te Ohuake delegates appointment of two Trust Board Trustees;
- Te Rōnanga o Ngāti Hauiti delegates appointment of two Trust Board Trustees;
- Te Rōnanga o Ngāti Whitiākepa delegates appointment of two Trust Board Trustees;
- Te Rōnanga o Ngāti Tamakōpiri delegates appointment of two Trust Board Trustees; and

Together, the chairpersons of the four rōnanga may appoint, following due consultation with their delegates and the Tāumatā Tikanga, one Trustee as the Tumu Mōkai Cultural Leader representing all of Mōkai Pātea Nui Tonu.

HOW HAS THE MANDATE STRATEGY BEEN SET OUT

- PART A** - Introduction
- PART B** - Definitions
- PART C** - Mōkai Pātea Nui Tonu
- PART D** - Hāpu of Mōkai Pātea Nui Tonu
- PART E** - Area of Interest
- PART F** - Claims
- PART G** - Waitangi Tribunal Process and Comprehensive Negotiations
- PART H** - Structure of the Trust Seeking Mandate
- PART I** - Accountability
- PART J** - Appointment & Proceedings of Negotiators
- PART K** - Mōkai Pātea Register
- PART L** - Mandating Hui Process
- PART M** - Mandate Voting Process
- PART N** - Dispute Resolution Process / Amendment / Withdrawal
- PART O** - List of Appendices

WHERE CAN YOU FIND THE MANDATE STRATEGY AND THE DEED OF TRUST
Copies of the Mōkai Pātea Waitangi Claims Trust's mandate strategy are available on Te Arāwhiti website www.tearawhiti.govt.nz, Te Kuni Kōiri website www.tki.govt.nz, Mōkai Pātea Waitangi Claims Trust website www.mokaipateaclaims.maori.nz.

Who Can Vote?

All members of the claimant community who are aged 18 years or over at the date of advertisement of the mandate voting process. A person who has had their whakapapa verified by the Membership Committee as a member of the claimant community is entitled to vote regardless of whether or not the voter is registered with the Mōkai Pātea Waitangi Claims Trust. The Claimant Community means all persons who affiliate by way of verified whakapapa to one or more of the four confederated Mōkai Pātea Iwi of Ngāti Te Ohuake, Ngāti Hauiti, Ngāti Whitiākepa or Ngāti Tamakōpiri and their respective hapū.

APPENDIX 9 – Special Vote Pack Contents

PANEL 1



<<BARCODE>>
<<NAME>>
<<ADDRESS1>>
<<ADDRESS2>>
<<ADDRESS3>>
<<ADDRESS4>>

Tear Along Perforation

PANEL 2

TO VOTE ONLINE

To vote online, go to www.voteonline.co.nz/XXXXX

Log in by entering the following details, which are unique to you.

Your Access Code is <<ACCESS CODE>>

Your Password is <<PASSWORD>>

NOTE: All passwords are case sensitive - letters must be entered in capitals.

Voting must be completed by **5pm, Monday 8 July 2019**.

To vote by a different method follow the instructions on the reverse side of this page.

Fold Here



<<BARCODE>>
THE RETURNING OFFICER
MŌKAI PĀTEA WAITANGI CLAIMS TRUST
C/- PO BOX 5135
WELLESLEY STREET
AUCKLAND 1141

APPENDIX 10 – Special Vote Pack Contents

3 Ways to Vote

you can only use ONE of these methods to vote

vote by post

Tick your preferred option (tear off instruction panel) Post the voting paper in the return envelope



or

vote at a hui

Place your completed voting paper in the ballot box at a mandate hui



or

vote online

Go to www.voteonline.co.nz/XXXXX
Enter your voter ID and password (shown on reverse side of this paper). Follow the online instructions on how to vote




Voting Closes

5 PM, MONDAY 8 JULY 2019

No votes will be accepted after this time

If voting by post it is recommended that your voting paper be posted no later than Tuesday 2 July 2019.

DETACH BEFORE RETURNING - TEAR HERE



VOTING PAPER

READ THIS FIRST

As a member of the claimant community, aged 18 years or over at the date of advertisement of the mandate voting process and a person who has had their whakapapa verified by the Membership Committee as being a member of the claimant community, you are entitled to vote regardless of whether or not you are registered with the Mōkai Pātea Waitangi Claims Trust. The Mandate is explained in the accompanying information. If you make a mistake that you cannot clearly correct, contact the Returning Officer and ask for a new voting paper.

BEFORE YOU VOTE

Read the accompanying material then decide which of the three ways you will vote (see the choices on the left side panel). Carefully read the resolution and the instructions above the resolution on how to vote.

AFTER YOU VOTE

Tear along the perforation and discard the left panel. Post your vote to the Returning Officer or take it to a mandate hui and place it in the ballot box or submit your vote online. Voting closes at 5 pm on Monday 8 July 2019.

ALL ENQUIRIES

Please phone 09 973 5212 or 0800 922 822

Dale Ofoske, Returning Officer, Independent Election Services Ltd, PO Box 5135, Wellesley Street, Auckland 1141


MŌKAI PĀTEA WAITANGI CLAIMS TRUST


Mandate Vote


How to vote: place a tick ✓ clearly within one box after the resolution below.

RESOLUTION

That the Mōkai Pātea Waitangi Claims Trust is mandated to represent the claimant community in negotiations with the Crown for the comprehensive settlement of all of the historical claims of Mōkai Pātea Nui Tonu.

FOR 

AGAINST 



FreePost Authority Number 4710
If unclaimed please return to PO Box 5135, Wellesley Street, Auckland 1141



Free  

FreePost Within NZ Only

APPENDIX 11 – Special Vote Pack Contents (printed on green with highlights)

Page 1 of 2



SPECIAL VOTE

Registration Form

Te Rūnanga o Ngāti Hauiti
 Te Rūnanga o Ngāi Te Ohuake
 Te Rūnanga o Ngāti Tamakōpiri
 Te Rūnanga o Ngāti Whitikaupeka

Each of the Mōkai Pātea Iwi Rūnanga referred to above are using this form to register the people of Mōkai Pātea whose ancestors identified as one or more of the hapū and iwi of Ngāti Hauiti, Ngāi Te Ohuake, Ngāti Tamakōpiri and Ngāti Whitikaupeka. Any information received will be held by or for each of the relevant Mōkai Pātea Iwi entities or their successors. You have certain rights under the Privacy Act 1993 to see and correct personal information which these entities (or their successors) hold about you. The information will be used to enable each entity to identify as many of their members as possible, so that as many individuals as possible are informed of Mōkai Pātea matters. The information may also be used to identify those who may take part in any electoral process relating to Mōkai Pātea (and/or the individual iwi within the confederation) and/or derive any entitlement as members in the future. Registrations are subject to a verification process involving the Iwi Rūnanga and may be declined should it be found that incorrect whakapapa claims have been made. Should you need assistance in completing this form, please contact the relevant Iwi Rūnanga or the Mōkai Pātea Waitangi Claims Trust (contact details are overleaf). Note that any children aged under 18 years entered on this form will be entered as adult members once they come of age, unless the Trust is advised in writing that they do not wish to be so registered.

Surname: _____ First Names: _____
 Maiden name: _____ Date of birth: ___/___/___ Gender: (circle) M / F
 Postal Address: _____ Home phone: _____
 Suburb: _____ Mobile phone: _____
 City: _____ Postcode: _____ Email: _____
 Country: _____ Partner's Name: _____
 Occupation: _____ Are you a whāngai? (circle) YES / NO

Children under 18 years (persons 18 and over should fill in their own form):

Surname:	First names:	Gender: (circle)	Date of Birth:	Whāngai?
_____	_____	M / F	___/___/___	Y / N
_____	_____	M / F	___/___/___	Y / N
_____	_____	M / F	___/___/___	Y / N
_____	_____	M / F	___/___/___	Y / N

Iwi—tick the box for any of the iwi that you affiliate to. If you know your hapū, please indicate by circling those below:

Ngāti Hauiti	<input type="checkbox"/>	Circle any known hapū	Ngāi Te Ngahoa/Ngāti Ruaanga/Ngāti Haukaha/Ngāti Tamatereka/ Ngāi Te Upokoiri/Ngāti Hora/Ngāti Tūmōkai/Ngāti Hinetio/ Ngāti Hinemanu/Ngāti Rangiwahiao/Ngāti Whiti-Hauti
Ngāi Te Ohuake	<input type="checkbox"/>	Circle any known hapū	Ngāti Tamakorako/Ngāti Hau/Ngāti Hinemanu/Ngāi Te Upokoiri/ Ngāi Te Ngaruru/Ngāti Paki/Ngāti Honomōkai
Ngāti Tamakōpiri	<input type="checkbox"/>	Circle any known hapū	Ngāti Tuope/Ngāti Tamakaiaorangi/Ngāti Hinetai/Ngāti Tamapinea/ Rangitoea/Ngāti Tamawhiti/Ngāti Tama Tūturu/Ngāti Te Taenui/ Ngāti Tūtakarua/Ngāti Tamakaitangi/Hikakainga
Ngāti Whitikaupeka	<input type="checkbox"/>	Circle any known hapū	Ngāti Whiti Tūturu/Ngāti Whiti-Hauti/Ngāti Whiti-Tama/ Ngāi Te Upokoiri/Ngāti Honomōkai/Ngāi Tautah

I acknowledge that I am required to provide personal information and whakapapa information to verify I am eligible to participate in the mandate vote 10 June 2019 – 8 July 2019, BUT I DO NOT WANT TO APPLY FOR MEMBERSHIP TO MOKAI PĀTEA WAITANGI CLAIMS TRUST.

TICK ONLY if this statement applies to you: DO NOT TICK IF YOU WANT TO REGISTER AS A MEMBER.

Declaration: I acknowledge the introduction to this form and consent to the disclosure of my personal information to any of the Iwi Rūnanga entities above or entities related to them or their successors and I declare that the information above and overleaf is correct.

Signature: _____

Today's Date: ___/___/___

SPECIAL VOTE

You

Father	Mother
--------	--------

Grandfather	Great Grandfather	
Grandmother	Great Grandmother	
Grandfather	Great Grandfather	
Grandmother	Great Grandmother	
Grandfather	Great Grandfather	
Grandmother	Great Grandmother	

Please show as much of your Mōkai Pātea whakapapa as possible. Attach additional papers if required. When completed please send to:

Mōkai Pātea Waitangi Claims Trust
c/- The Administrator
PO Box 54
Tahape 4742
mpwct@mokaipateaservices.org.nz

Iwi contacts :

- Ngāti Hauiti Utiku Potaka/Neville Lomax u.potaka@xtra.co.nz
- Ngāti Hauiti mahoa1944@gmail.com
- Ngāti Te Ohuake Te-Rangi Hawira/Richard Steedman raulcowhai@xtra.co.nz
- Ngāti Te Ohuake richard.steedman@xtra.co.nz
- Ngāti Tamakopiri Moira Raukawa-Haskell/Hari Benevides mraukawahaskell@gmail.com
- Ngāti Tamakopiri harbis@inspire.net.nz
- Ngāti Whittikaupaka Barbara Ball/Richard Steedman baumar.tpe@gmail.com
- Ngāti Whittikaupaka richard.steedman@xtra.co.nz

Mōkai Pātea

Waitangi Claims Trust

Mandate Hui

15 – 23 June 2019

Introductions

- ▶ Mōkai Pātea Waitangi Claims Trust
- ▶ Te Puni Kōkiri Observers
- ▶ Independent Returning Officer Dale Ofsoke of Independent Election Services Ltd

Mōkai Pātea Waitangi Claims Trust

Trustees

- ▶ Tumu Mokai & Trustee Ihakara Hunter, Barbara Ball, Te Rina Warren, Hari Benevides, Moira Raukawa Haskell, Utiku Potaka, Thomas Curtis, Robert Martin, Maraea Bellamy

Team

- ▶ Programme Manager - Lavinia Jacobsen
- ▶ Hapū/ Iwi Facilitator - Richard Steedman
- ▶ Administration/ Accounting Services - Contract with MPS (Shari Chase MPS Iwi Administrator)
- ▶ Legal advice - Leo Watson

Agenda

- ▶ Hui Kawa
- ▶ Purpose of Mandate
- ▶ Mōkai Pātea Nui Tonu
- ▶ Claimant Community
- ▶ Mandate Strategy & Voting process
- ▶ Mandate Resolution
- ▶ General Update
- ▶ Questions & Answers

Hui Kawa

- ▶ To ensure all hui attendees hear the information presented and give people the opportunity to ask questions
- ▶ Questions at the end please
- ▶ Handout available at the end & website has mandate information
- ▶ Respect each other
- ▶ Welcome to take photographs of slides
- ▶ Social Media **no live streaming.**
- ▶ We are Video recording, to provide a record of proceedings. Some portions may be used for media or promotional footage in the future
- ▶ Media / Journalists? We will be available to meet at the conclusion for interviews. Leaving Question time for our intended audience Mōkai Pātea members

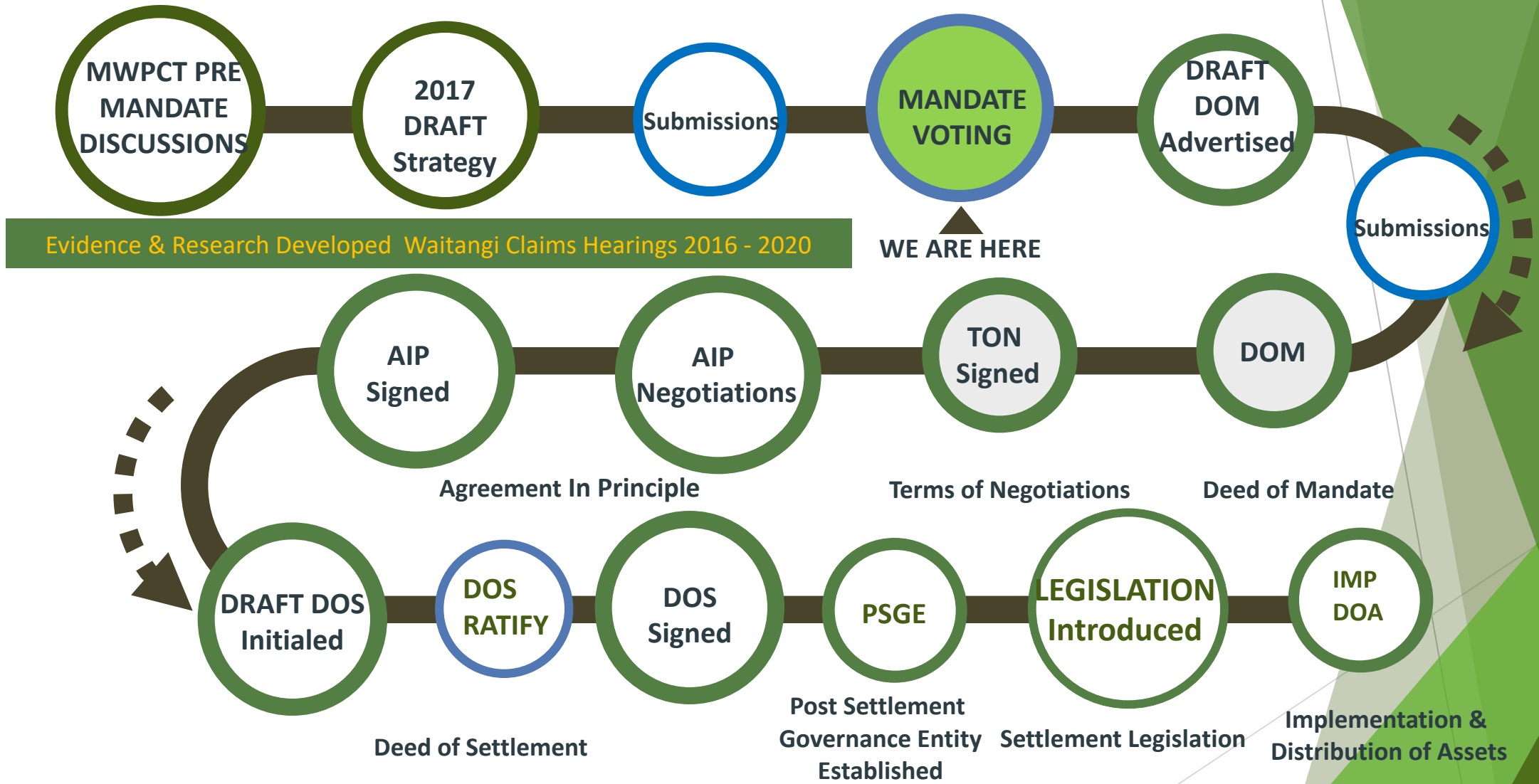
Present Situation

- ▶ Mōkai Pātea Nui Tonu have been involved in Waitangi Tribunal Hearings since 2016
- ▶ The Crown has recognised Mōkai Pātea as a Large Natural Grouping for the purpose of Treaty settlement negotiations
- ▶ The Crown is asking Mōkai Pātea Waitangi Claims Trust to confirm its mandate through a Mandate Vote
- ▶ This means there will be a Voting period which will include a series of six mandate hui.

Purpose of Mandate

- ▶ We will be asking you to consider that Mōkai Pātea Waitangi Claims Trust represents you in negotiations with the Crown
- ▶ That representation, will be maintained as outlined in the Mōkai Pātea Waitangi Claims Trust Mandate Strategy

DIRECT NEGOTIATIONS ROADMAP



What is a Treaty Settlement?

- ▶ An agreement between the Crown and a claimant group that settles all historical Treaty claims against the Crown (whether lodged with the Waitangi Tribunal or not) and acknowledges that the settlement is fair and final.
- ▶ Has three components:
 - ▶ historical account;
 - ▶ acknowledgements and apology; and
 - ▶ Redress (cultural, financial and commercial).
- ▶ Focuses on:
 - ▶ providing recognition of the claimant group's historical grievances;
 - ▶ restoring the relationship between the claimant group and the Crown; and
 - ▶ contributing to the claimant group's economic development.

What is a Mandate?

A mandate is an authorisation by a person or group to another group, to take a certain course of action.

In this case your supportive vote gives the authority for the Mōkai Pātea Waitangi Claims Trust to represent you in negotiations with the crown.

Limits on the Mandate:

- ▶ Only gives the mandated body the authority to negotiate a draft Deed of Settlement with the Crown
- ▶ Mandated representatives cannot settle any of the claims without the approval of the claimant group
- ▶ The claimant group has the final say on whether or not to accept a draft Deed of Settlement

Mōkai Pātea Waitangi Claims Trust Mandate

- ▶ Several years of work with Mōkai Pātea Iwi Nui Tonu culminated in the development of a draft mandate strategy which was submitted to the Crown for consideration
- ▶ In December 2017 the draft mandate strategy was advertised for submissions
- ▶ It proposed a process where-by Mōkai Pātea Waitangi Claims Trust would seek a mandate to represent from Mōkai Pātea Nui Tonu in Treaty settlement negotiations

Mandate Strategy Amendments

- ▶ Majority of submissions supported the Draft Mandate Strategy
- ▶ Opposition from some Ngāti Hinemanu and Ngāti Paki people through the Ngāti Hinemanu me Ngāti Paki Heritage Trust
- ▶ Work continued throughout 2018 with wānanga, hui-a-rohe, rūnanga hui-a-iwi, and series of independently facilitated hui with Ngāti Hinemanu me Ngāti Paki Heritage Trust
- ▶ As a result the strategy has evolved, as will be explained
- ▶ The differences with Ngāti Hinemanu me Ngāti Paki Heritage Trust remain unresolved
- ▶ Mōkai Pātea Nui Tonu and Mōkai Pātea Waitangi Claims Trust remain open to finding resolution acceptable to all parties, and we have agreed to provide an opportunity during each mandate hui for the Heritage Trust to give their perspective.

Vision

Mōkai Pātea is a viable and strong confederation, based on robust and autonomous Iwi groups

Mission

To settle historic Treaty of Waitangi claims as the Mōkai Pātea Confederation, in a manner that will greatly increase the profile and economic base for affiliated Hapū and Iwi and will achieve the return of cultural identity and property to Iwi

So the next generation, can take us to levels,
we can't imagine today

It is time for our people to decide if we should proceed with negotiations with the Crown

Mōkai Pātea Nui Tonu

- ▶ Tamatea Pokai Whenua common founding ancestor
- ▶ Of the following iwi and their respective hapū:
 - ▶ Ngāi Te Ohuake;
 - ▶ Ngāti Hauiti;
 - ▶ Ngāti Whitikaupeka; and
 - ▶ Ngāti Tamakōpiri.
- ▶ Mōkai Pātea Nui Tonu acknowledge and affirm their history of kotahitanga, and similarly recognise each Iwi Rūnanga's independent exercise of tino rangatiratanga.

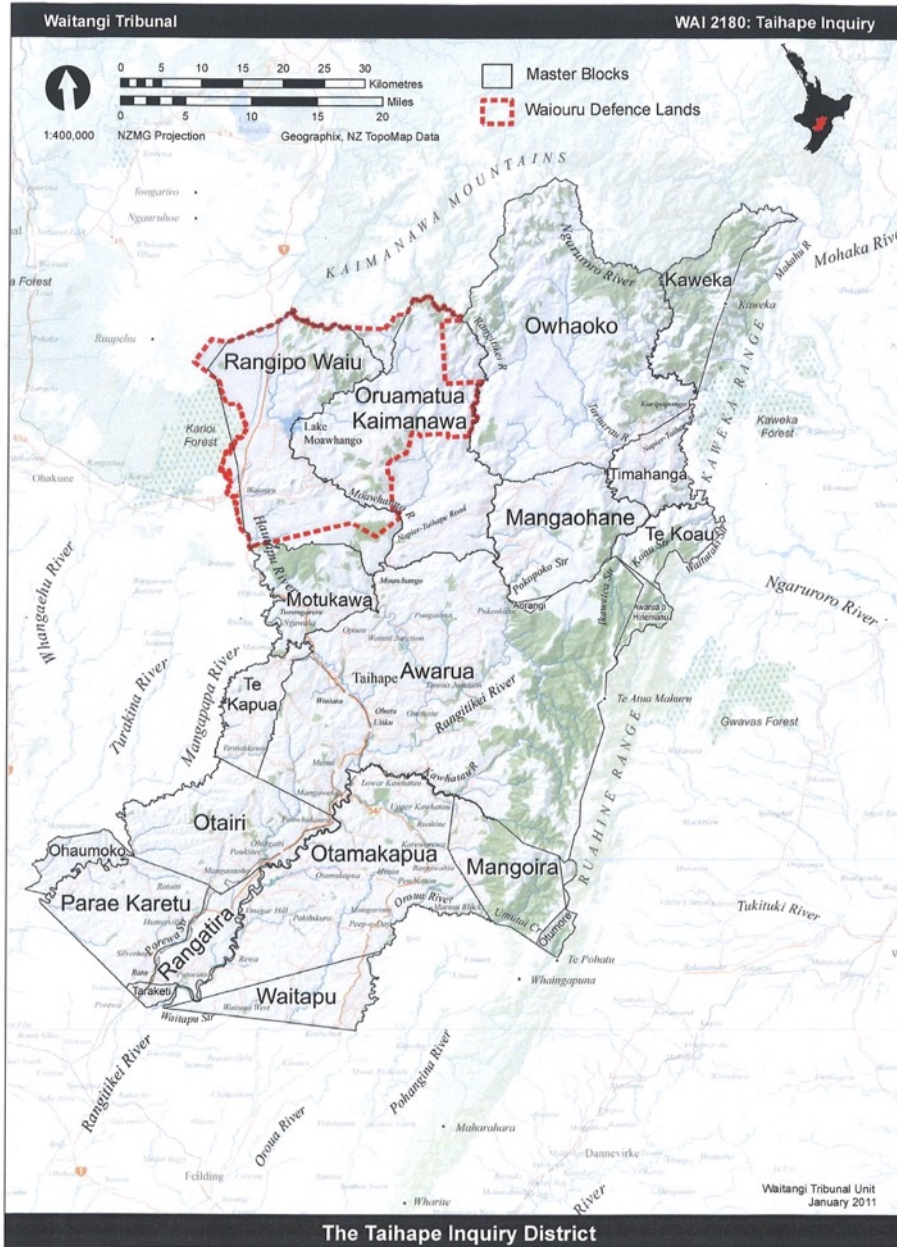
Rohe Whenua

- ▶ South of the Kaimanawa Ranges.
- ▶ North of Pourewa & Rātā
- ▶ West of the Ngaruroro Awa and Ruahine Ranges
- ▶ East of Taihape Township and
- ▶ It includes the towns of Taihape and parts of Hunterville.
- ▶ The Rangitīkei River flows through the heart of the district

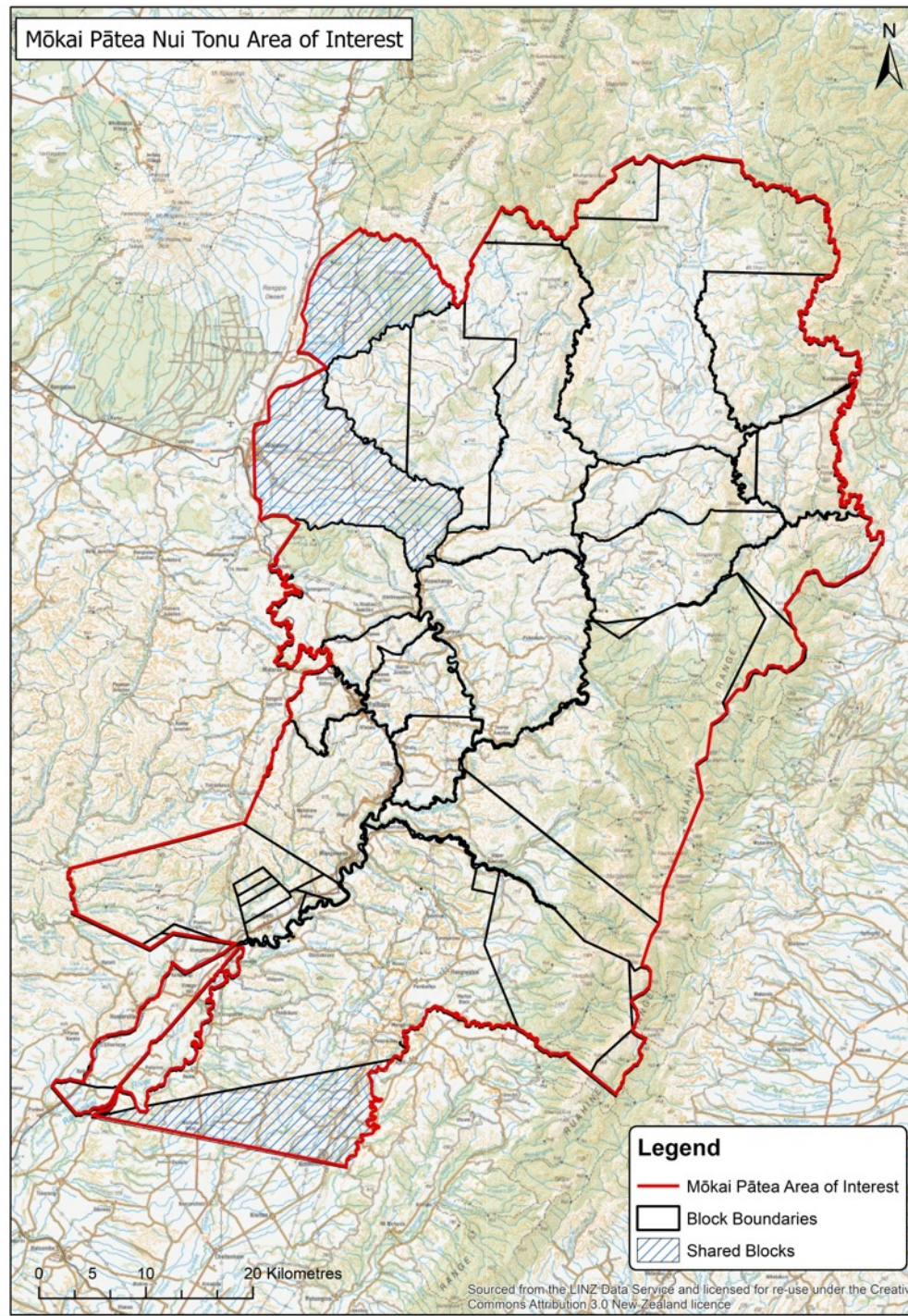
MAPS ON FOLLOWING SLIDES

- ▶ Wai:2180 Taihape Inquiry District
- ▶ Ngāi Te Ohuake
- ▶ Ngāti Hauiti
- ▶ Ngāti Whitikaupeka
- ▶ Ngāti Tamakōpiri
- ▶ Rohe Potae Overlapping

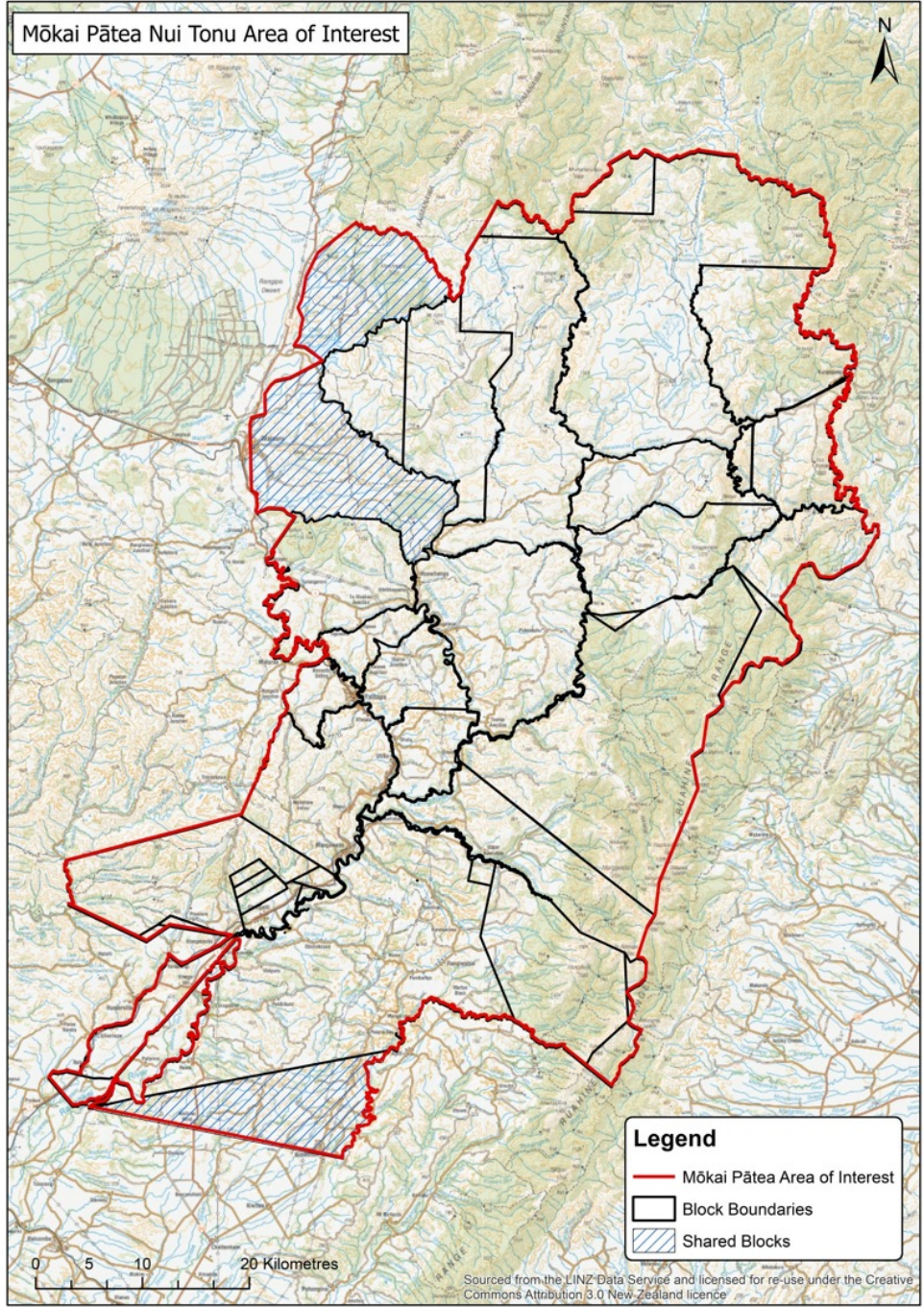
Wai:2180 Taihape Inquiry District



Mōkai Pātea Nui Tonu Area of Interest



Mōkai Pātea Nui Tonu Area of Interest

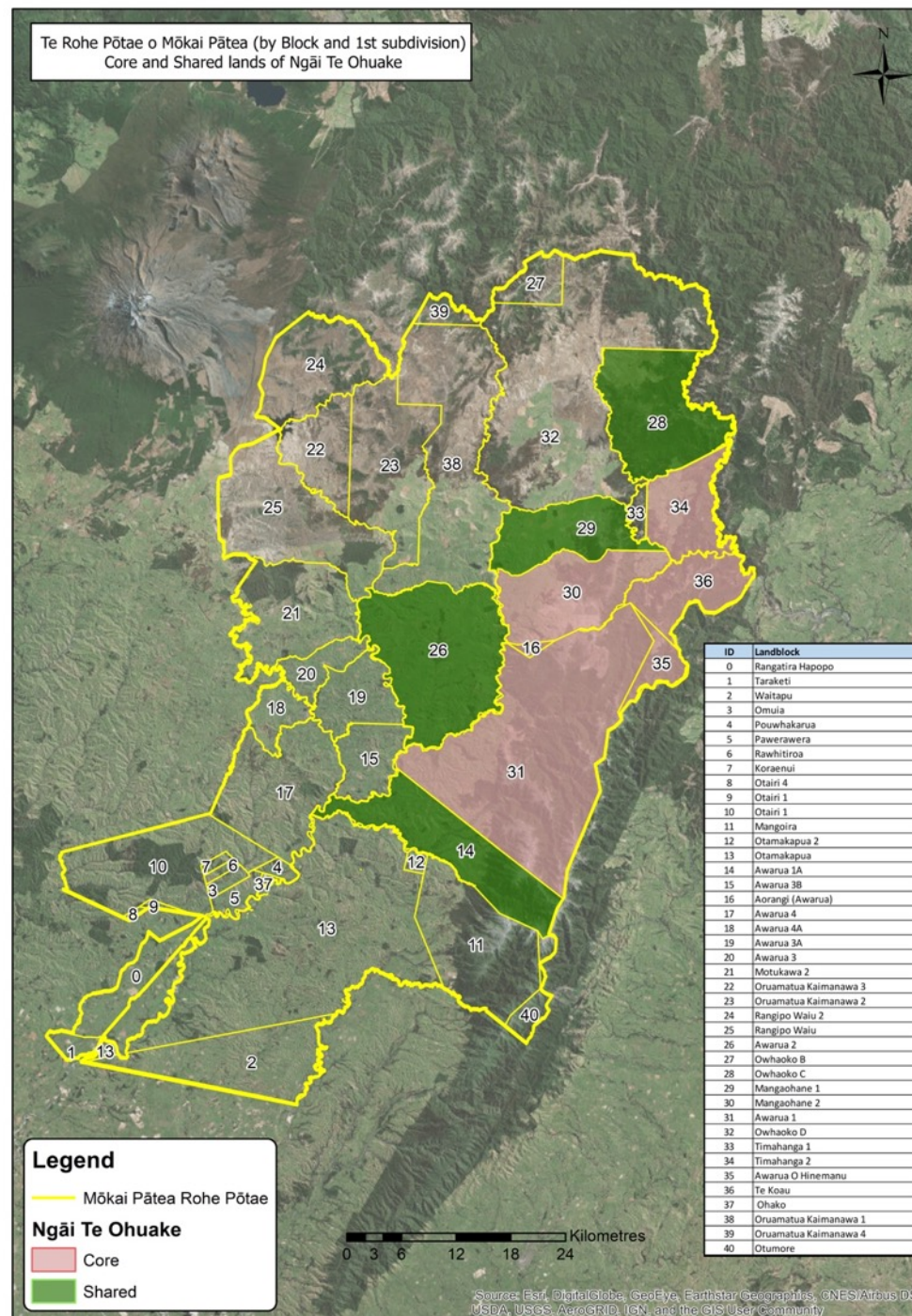


Sourced from the LINZ Data Service and licensed for re-use under the Creative Commons Attribution 3.0 New Zealand licence

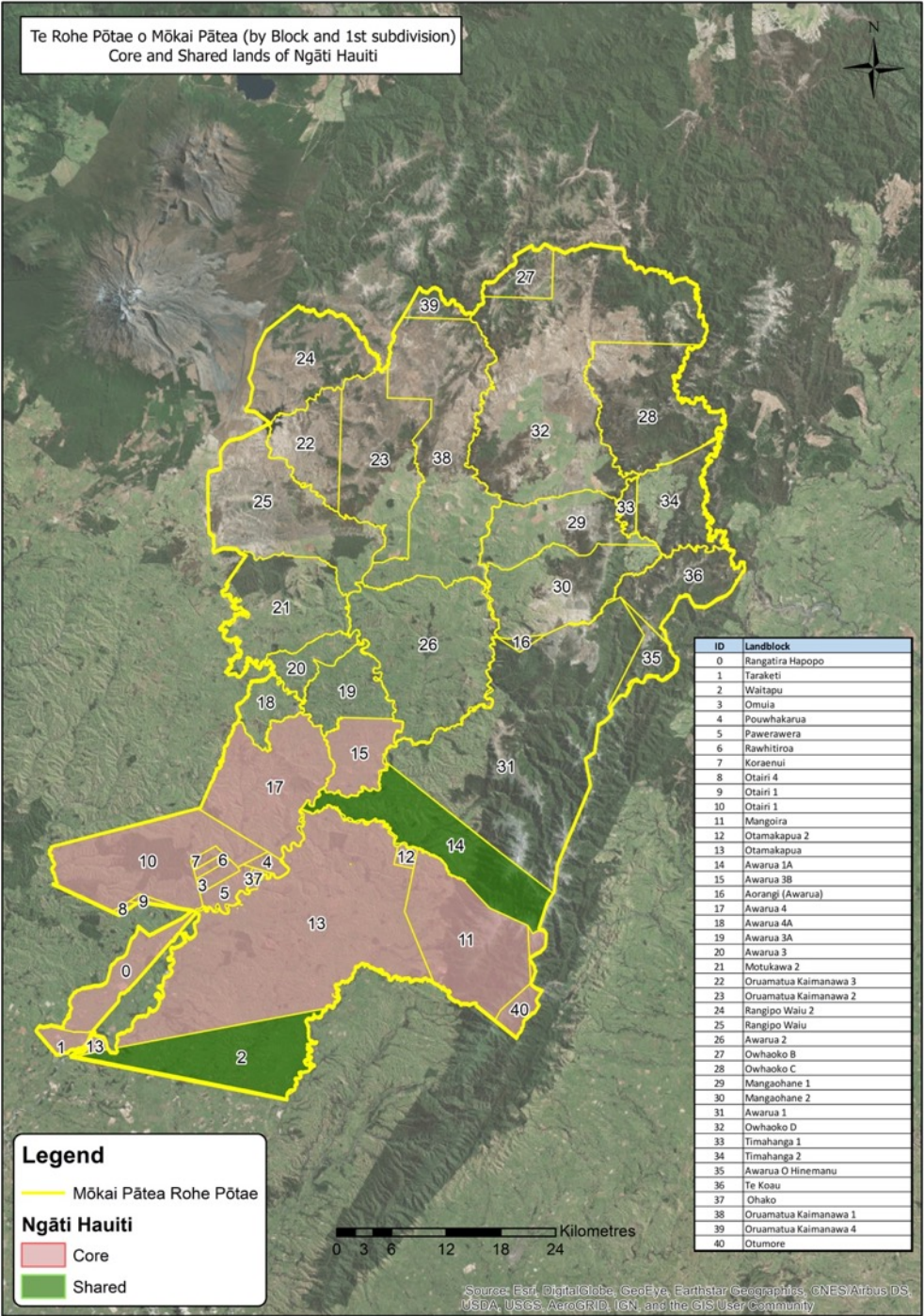


The Taihape Inquiry District

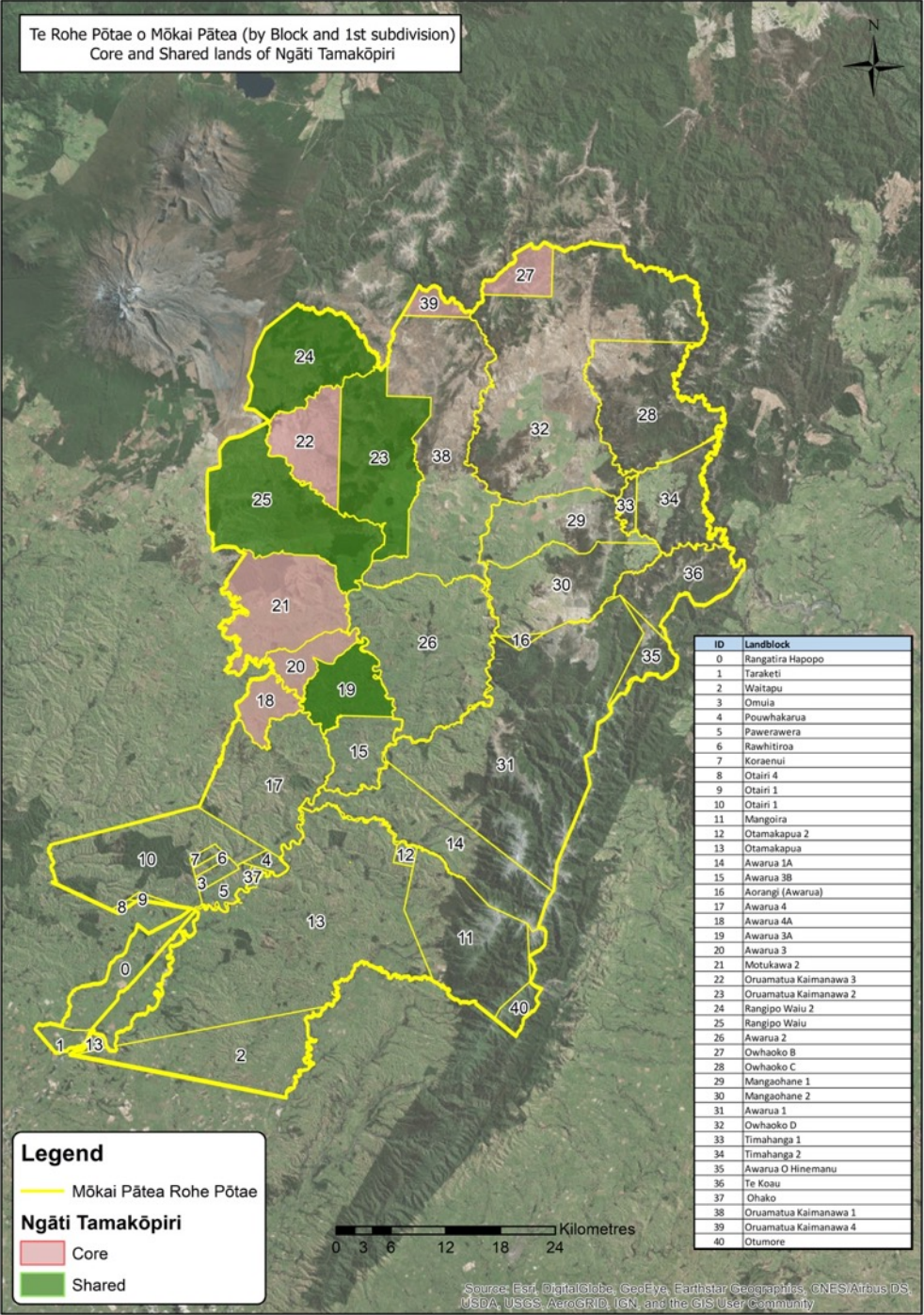
Ngāi Te Ohuake Core & Shared Lands



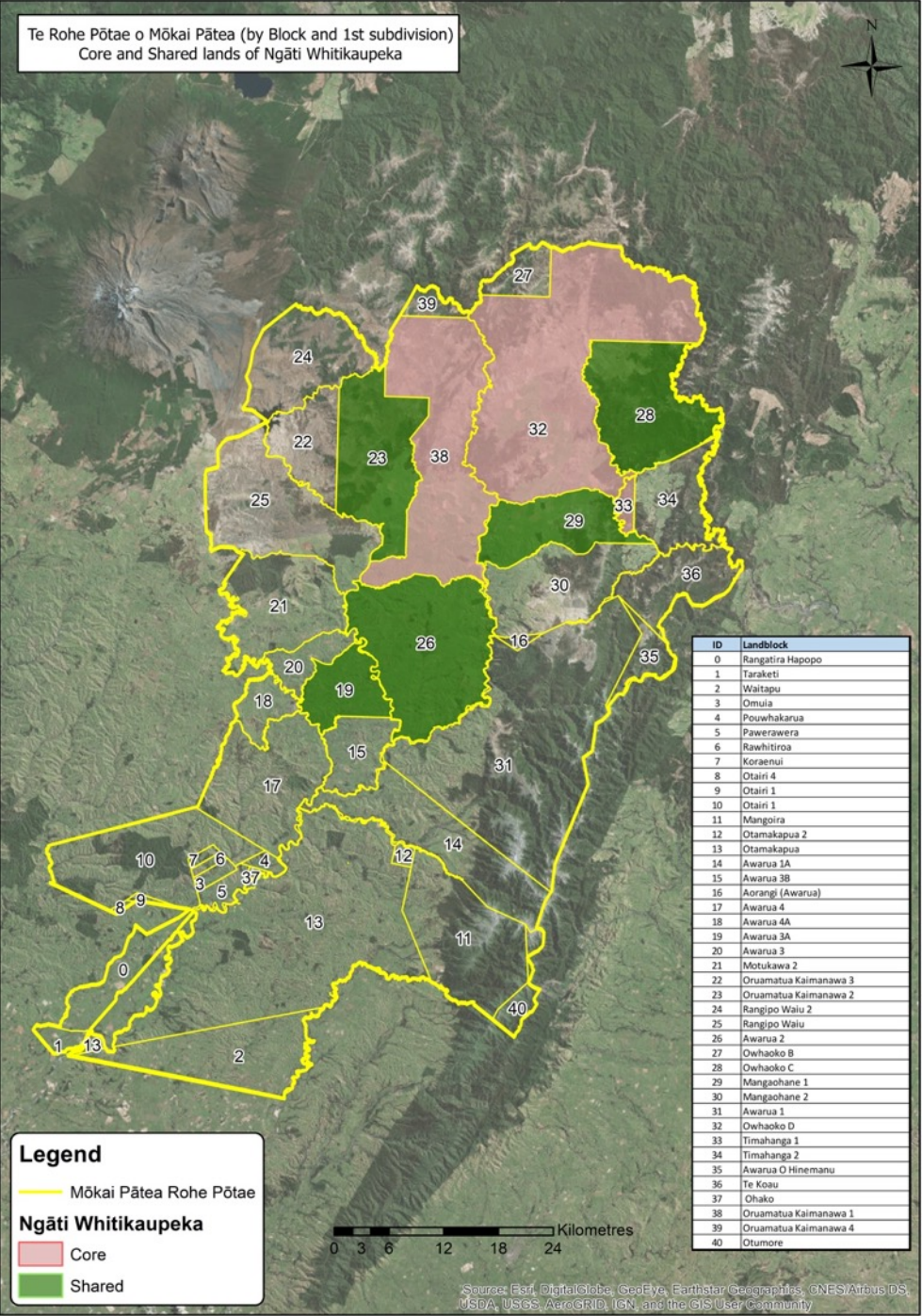
Ngāti Hauiti Core & Shared Lands



Ngāti Tamakōpiri Core & Shared Lands



Ngāti Whitikaupeka Core & Shared Lands



WAI Claims

The Mandate sought is to negotiate all Mōkai Pātea historical Treaty of Waitangi claims whether registered or unregistered that arise from Crown actions and omissions that occurred prior to 21 September 1992 including but not limited to the following claims in so far as they relate to Mōkai Pātea.

1	WAI 37	Tuope
2	WAI 263	Te Koau
3	WAI 378	Owhaoko C3B
4	WAI 382	Owhaoko C7
5	WAI 385	Potaka (Utiku) Tship
6	WAI 400	Ahuriri
7	WAI 401	Broughton
8	WAI 581	Ngāti Hauiti
9	WAI 588	Kaimanawa
10	WAI 647	Awarua
11	WAI 662	Mangaohane
12	WAI 933	Tuope
13	WAI 1196	Tongariro Power Sch
14	WAI 1632	Pohe
15	WAI 1639	Cribb
16	WAI 1705	MPWCT
17	WAI 1835	Ngāti Paki Ngāti Hinemanu
18	WAI 1868	Oruamatua Kaimanawa
19	WAI 1888	Whitikaupeka
20	WAI 2157	Te Wainuiarua

Who is the Claimant Community?

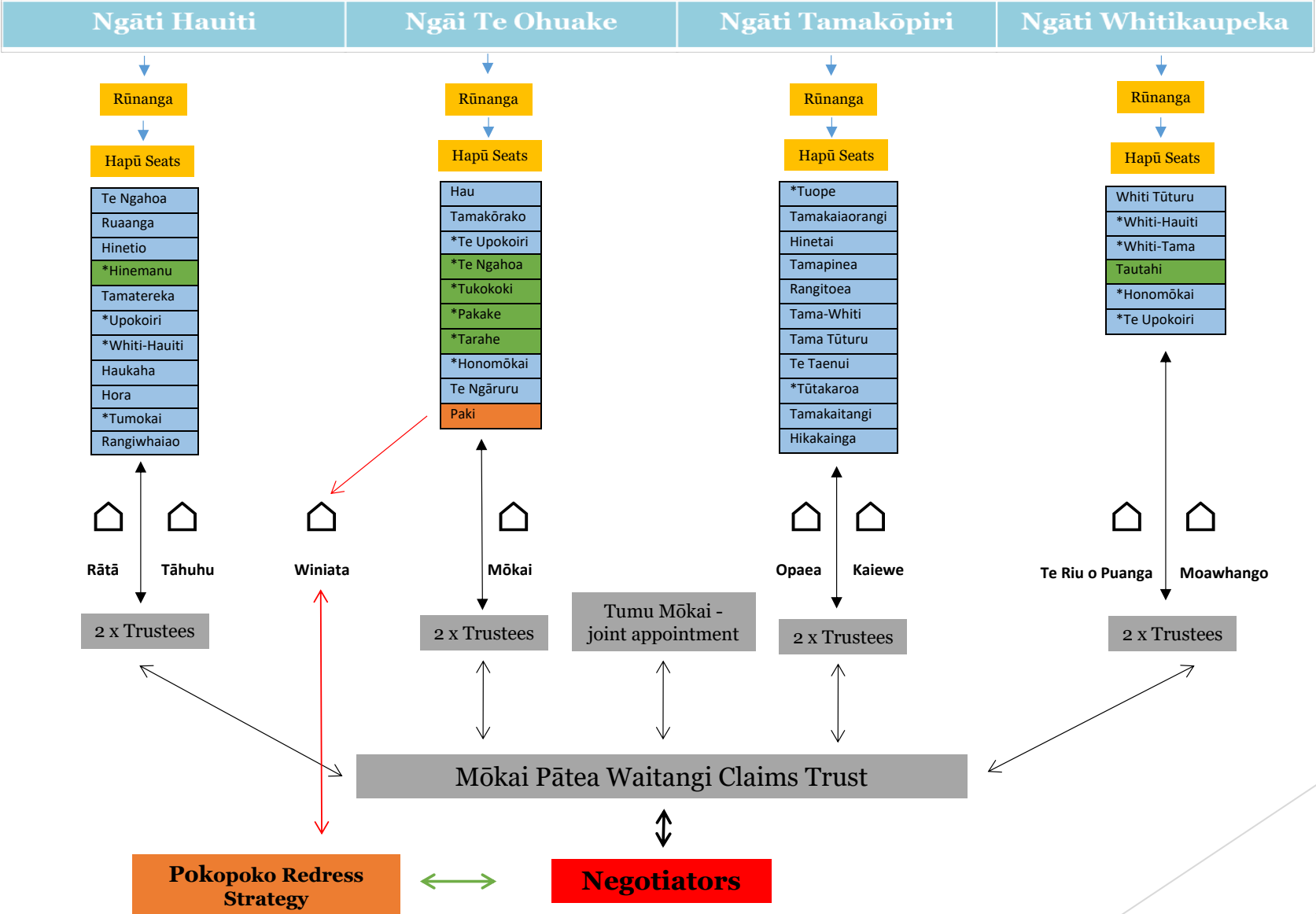
All those persons who affiliate by way of:

- ▶ verified whakapapa
- ▶ to one or more of the four confederated Iwi of Ngāi Te Ohuake, Ngāti Hauiti, Ngāti Whitikaupeka and Ngāti Tamakōpiri and their respective hapū
- ▶ including whāngai who satisfy the whakapapa verification processes under the Trust Deed
- ▶ and includes those who choose not to register as a member of the Trust

Mōkai Pātea Iwi, Hapu, Marae, Papakāinga

Iwi	<u>Ngāi Te Ohuake</u>	<u>Ngāti Hauiti</u>	<u>Ngāti Whitikaupeka</u>	<u>Ngāti Tamakōpiri</u>
Hapū	Ngāti Hau Ngāti Tamakorako Ngāti Hinemanu Ngāti Honomōkai Ngāi Te Upokoiri Ngāi te Ngāruru Ngāti Paki	Ngāi Te Ngahoa Ngāti Ruaanga Ngāti Haukaha Ngāti Tamatereka Ngāti Hora Ngāti Tūmōkai Ngāti Hinetio Ngāti Hinemanu Ngāi Te Upokoiri (II) Ngāti Whiti-Hauiti Ngāti Rangiwahiao	Ngāti Whiti Tūturu Ngāti Whiti-Hauiti Ngāti Whiti-Tama Ngāi Te Upokoiri Ngāti Honomōkai Ngāi Tautahi	Ngāti Tuope Ngāti Tamakaiaorangi Ngāti Hinetai Ngāti Tamapinea Rangitoea Ngāti Tamawhiti Ngāti Tama Tūturu Ngāti Te Taenui Ngāti Tūtakarua Ngāti Tamakaitangi Hikakainga
Marae	Winiata Marae (Ngāti Hinemanu/Ngāti Paki)	Tahuu Rātā Winiata (Ngāti Hinemanu)	Te Riu o Puanga Moawhango	Opaea Kaiewe
Papakāinga	Awarua (Mōkai) Pokopoko	Utiku Otara Pourewa	Makokomiko Matuku	Tūrangaarere Komakoriki

Mōkai Pātea Claimant Community



Mandate Strategy

1. States the purpose of the Mandate Strategy
2. Explains Mōkai Pātea Nui Tonu and names the iwi included
3. Names the hapū, marae and papakāinga of Mōkai Pātea Nui Tonu
4. Explains the area of interest for each of the iwi of Mōkai Pātea
5. Acknowledges the overlapping interests with other groups
6. The nature of the Historical WAI claims
7. Provides a diagram to explain the structure of Mōkai Pātea Waitangi Claims Trust

Mandate Strategy Continued

8. Explains the relationship between the Trust/Iwi Rūnanga and Iwi/Hapū
9. Discusses the process of appointment and proceedings of negotiators
10. Explains the Mōkai Pātea register
11. Outlines the mandating hui process and the advertisement
12. Provides options for the voting process
13. Considers the dispute resolution process

Eligibility to Vote

- ▶ 18 years of age or older
- ▶ Must have whakapapa connection to at least one of the four Iwi of Mōkai Pātea
- ▶ Registered to vote from the Mōkai Pātea tribal register, or
- ▶ You can register to vote at a mandate hui or by contacting Election Services - you will be required to fill in a registration form, and Mōkai Pātea Iwi will verify your whakapapa.

Mandate Hui

Date 2019	Start Time	Venue
Sat 15 June	10 am	Old Taihape Hospital Cafeteria, Hospital Road, Taihape
Sat 15 June	5 pm	Kingsgate Hotel, 397 Victoria Avenue, Whanganui
Sun 16 June	1 pm	The Porirua Club, Sports Room, 1 Lodge Place, Porirua, Wellington
Fri 21 June	5.30 pm	Tokaanu Hotel Conference Room, 525 State Highway 4, Tokaanu, Turangi
Sat 22 June	11 am	Taradale Town Hall, Lee Road, Taradale, Hawkes Bay
Sun 23 June	11 am	Holiday Inn Auckland Airport, 2 Ascot Road Airport Oaks, Auckland

3 Ways to Vote

There will be three ways in which you can vote:

- ▶ Vote by Post
- ▶ Vote Online
- ▶ Vote at a Mandate Hui

VOTING OPENS 10 JUNE 2019 CLOSSES 8 JULY 2019.

The Mandate Vote

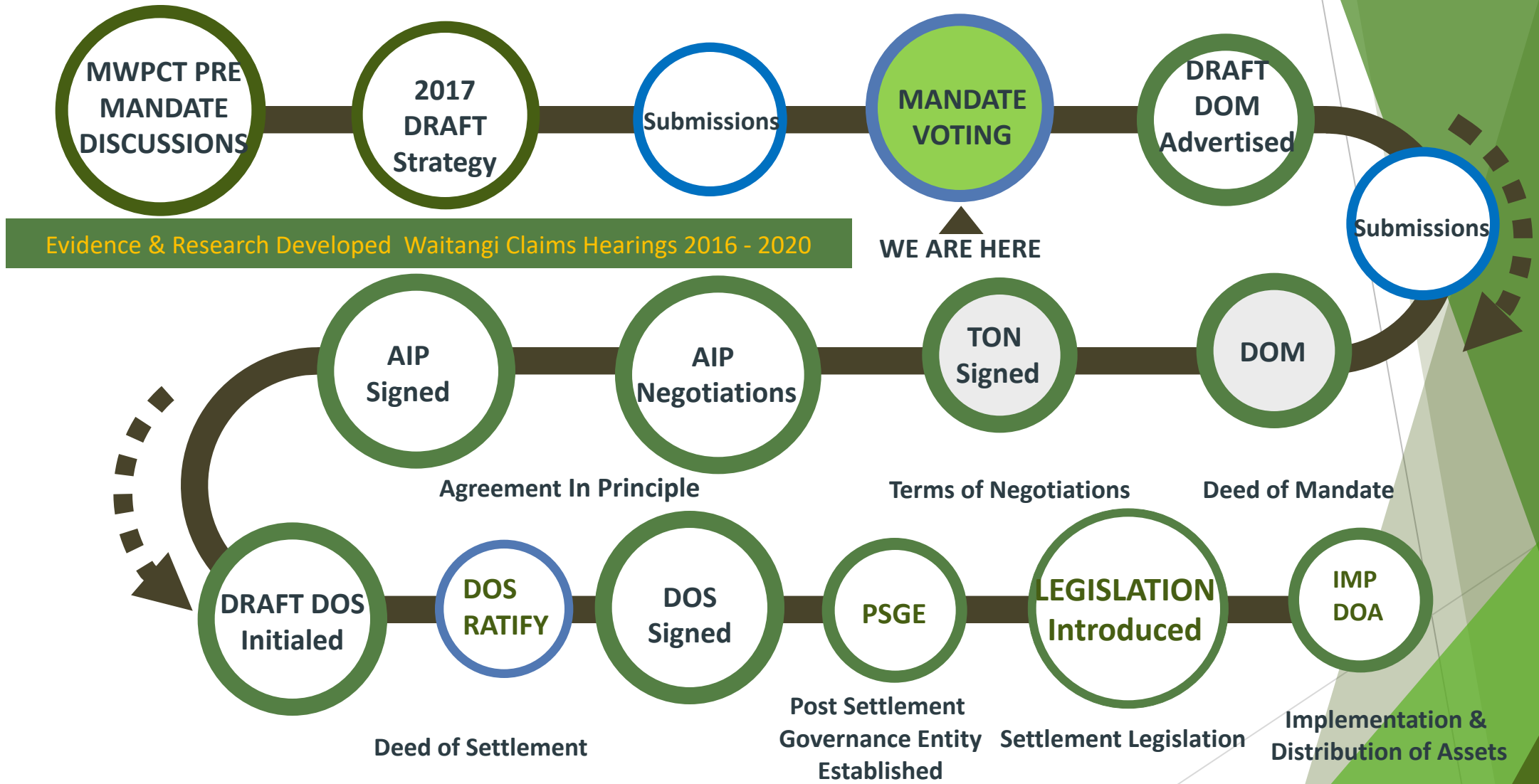
All members of Mōkai Pātea Claimant community 18 years of age and over are invited to vote on the following resolution:

“That the Mōkai Pātea Waitangi Claims Trust is mandated to represent the Mōkai Pātea claimant community in negotiations with the Crown for the comprehensive settlement of all of the historical claims of Mōkai Pātea Nui Tonu”

Waitangi Tribunal Path Update

Week	Date	Venue	Our Focus
1 & 2	(2016)	Various	Kōrero Tuku Iho History & Tradition Mōkai Pātea
3	(Oct 2017)	Taihape	Ngāti Whitikaupeka
4	(Dec 2017)	Winiata	Ngāi Te Ohuake/Ngati Paki
5	(Mar 2018)	Rata	Ngāti Hauti
6	(Apr 2018)	Opaea, Kaiewe & Moawhango	Ngāti Tamakōpiri
7	(May 2018)	Winiata	Southern Claims
8	(Sep 2018)	Rata	Remaining Tangata Whenua Evidence
9	(March 2019)	Waiouru	Crown Evidence Part 1
10	16-18 Oct 2019	Omahu (tbc)	Kaweka & Gwavas (16-18 Oct 2018)
11	4-8 Nov 2019	Waiouru (tbc)	Crown Evidence Part 2
12	18-20 Nov 2019	Moawhango (tbc)	Landlocked Land in Mōkai Pātea
13	17-21 Feb 2020	Winiata (tbc)	Claimant Closing
14	20 April 2020	Waiouru (tbc)	Crown Closing

DIRECT NEGOTIATIONS ROADMAP



Take Action & Vote

- ▶ Vote packs will be posted to registered members
- ▶ Are you registered?
- ▶ Check we have your current contact & postal details
- ▶ Check your whānau are registered
- ▶ Children you included when you registered and may now be 18 or older, **must** be registered in their own right
- ▶ Vote and encourage others to Vote

Ngāti Hinemanu me Ngāti Paki Heritage Trust perspective

- ▶ On Thursday 13 June, the Heritage Trust asked the Crown if it could make a presentation to each mandate hui. Mokai Patea Waitangi Claims Trust has agreed to this in good faith.
- ▶ The next 5 slides are not the views of Mokai Patea Waitangi Claims Trust.
- ▶ There will then be a summary from Mokai Patea and opportunity for questions and answers



NGĀTI
HINEMANU me
NGĀTI PAKI

~~WHY ARE WE VOTING 'NO'?~~



RANGATIRATANGA

Ngāti Hinemanu me Ngāti Paki have always maintained an independent stance.

Ngāti Hinemanu me Ngāti Paki oppose having their claims included within any Deed of Mandate of any group other than the Ngāti Hinemanu me Ngāti Paki Heritage Trust.

The mandate of the Ngāti Hinemanu me Ngāti Paki Heritage Trust to represent these claims within the Treaty settlement process rubric has been consistently reaffirmed at every AGM.

TIKANGA

The MPWCT's attempt to subsume the tino rangatiratanga of Ngāti Hinemanu me Ngāti Paki under the mantle of Ngāi Te Ohuake is a breach of tikanga.

Ngāi Te Ohuake is an ancient descent group that over time became assumed within the mana and authority of Ngāti Hinemanu me Ngāti Paki.

Ngāti Hinemanu ki Taihape and Ngāti Paki were willing to have these matters resolved in a mutually beneficial way consistent with tikanga and be represented by those who have always recognised the mana motuhake and tino rangatiratanga of Ngāti Hinemanu me Ngāti Paki to pursue their own interests as part of the complex claims process.

MPWCT responded that they have no appetite to accommodate Ngāti Hinemanu as a fifth Iwi, nor were they interested in making any changes which supported Ngāti Hinemanu and Ngāti Paki being fairly represented in the way we should be.







Ngāti Hinemanu
me Ngāti PAKI
VOTE **X**KĀO

Summary: Mokai Patea presentation

- ▶ The next step in the claims process is to endorse a mandated representative body to negotiate Treaty claims
- ▶ Mokai Patea Waitangi Claims Trust is a robust structure. We are Accountable, Transparent. Elections are representative of all of our hapū.
- ▶ We strongly object to the suggestion that MPWCT is “subsuming” hapū rangatiratanga. All hapū are accommodated and respected, including Ngāti Hinemanu and Ngāti Paki.

QUESTIONS

Mandate Strategy



www.mokaipateaclaims.maori.nz/documents



mpwct@mokaipateaservices.org.nz



0800 388 488

Vote Pack



info@electionservices.co.nz



0800 922 822

This file note is a final summary report of the hui. It is not a full transcript or a full record of the hui. It is intended for internal Te Puni Kōkiri use only and not public distribution. It may, however, be subject to Official Information Act 1982 requests in the future.

Appendix Q – Te Puni Kokiri Observer Reports on Mandate Hui

This file note is a final summary report of the hui. It is not a full transcript or a full record of the hui. It is intended for internal Te Puni Kōkiri use only and not public distribution. It may, however, be subject to Official Information Act 1982 requests in the future.

Mōkai Pātea Waitangi Claims Trust ratification hui observer report

Iwi	Mōkai Pātea		
Location	Taihape Hospital Cafeteria, Old Hospital Road, Taihape		
Date	Saturday, 15 June 2019		
Start time	10:00am	Finish time	1:40pm
Chair	Utiku Potaka		
Observer(s)	Donna Docherty and Cindy Penetito, (Te Puni Kōkiri, Te Tai Hauāuru)		
Presenter(s)	Trustees: Moira Raukawa-Haskell, Maraea Bellamy, Barbara Ball, Richard Steadman, Thomas Curtis, Utiku Potaka Ngāti Hinemanu me Ngāti Paki Heritage Trust: Jordan Winiata-Haines Legal Advisor: Leo Watson		
Attendance	Total of 97 people*, including 2 Te Puni Kōkiri observers *people were arriving and leaving throughout the hui, so this is an approximate number.		
Purpose	The purpose of the hui was presented as: "To consider that Mōkai Pātea Waitangi Claims Trust represents you in negotiations with the Crown".		
Agenda	<ul style="list-style-type: none"> • Karakia • Mihimihi • Introductions • Hui Kawa • Presentation • Kapu Tī • Question & Answers • Karakia whakamutunga 		
Presentation	All presenters introduced themselves and how they whakapapa to Mōkai Pātea. A PowerPoint presentation was presented to hui attendees, which was followed, by a question and answer session.		
Questions and	Questions were called for after the PowerPoint presentation.		

This file note is a final summary report of the hui. It is not a full transcript or a full record of the hui. It is intended for internal Te Puni Kōkiri use only and not public distribution. It may, however, be subject to Official Information Act 1982 requests in the future.

comments	<p>Below is a summary of questions and comments:</p> <p>Q1: An attendee stated that in the presentation it recognises only Large Natural Groupings (LNG). The attendee asked what year and what month did the Crown recognise Mōkai Pātea as a LNG?</p> <p>Furthermore, the attendee stated that in the presentation, the presenter made the comment ‘us’. The attendee asked how is the ‘us’ in the presentation? There is a collective of whānau who don’t see Ngāti Hinemanu me Ngāti Paki as part of that LNG. The attendee asked why are some of the hapū of Ngāti Hinemanu me Ngāti Paki left out of the structure?</p> <p>A1: The presenter explained the structure provided in the presentation is based on the 4 iwi and their respective hapū, represented by their rūnanga as the LNG.</p> <p>Mōkai Pātea received a letter from the previous Minister for Treaty of Waitangi Negotiations, Hon Christopher Finlayson, in which the Crown recognised Mōkai Pātea as a LNG.</p> <p>Comment: An attendee stated Ngāti Hinemanu me Ngāti Paki are an autonomous group and not included as an iwi.</p> <p>Q2: An attendee stated Ngāti Hinemanu me Ngāti Paki never conceded their authority to the Crown and that kinship and hapū never ceded authority. The attendee asked why are they not recognised in the structure and who decided not to include them?</p> <p>A2: It was explained that verification went back to the verifiers, the hapū and the marae, and whakapapa of hapū and iwi.</p> <p>Q3: An attendee commented, one map isn’t the same as the other. WAI 2180 Taihape Inquiry District and the Mōkai Pātea Nui Tonu of Interest maps are only 90% correct and the attendee stated everyone is going by the map. The attendee also asked that because Ngāti Hinemanu me Ngāti Paki are still having their talks, why doesn’t the Claims Trust wait until these talks are finished and the report is completed?</p> <p>A3: It was explained that there is a 90-95% overlap between the two maps. The maps are only talking about Mōkai Pātea, not Ngāti Kahungunu.</p> <p>Comment: An attendee commented that they agree with the three maps and can see the overlaps. Referring to one of the maps, they have read the form (hand-out sheet).</p> <p>Response: The presenter reminded whānau that in the voting process, they have the option to tick yes if they agree or tick no if they disagree.</p> <p><i>It was at this stage the independent returning officer was invited to explain the voting process.</i></p> <p>Q4: An attendee asked and commented: do the maps address land blocks and ownership? Don’t agree with</p>
-----------------	--

This file note is a final summary report of the hui. It is not a full transcript or a full record of the hui. It is intended for internal Te Puni Kōkiri use only and not public distribution. It may, however, be subject to Official Information Act 1982 requests in the future.

excluding Ngāti Hinemanu me Ngāti Paki. These blocks belong to Ngāti Hinemanu not Ngāi Te Ohuake, who are they?

A4: The presenter explained in regards to Ngāi Te Ohuake – this is new to the Claims Trust as they didn't know that side of the whakapapa. The Claims Trust need to understand where the hapū fits in the scheme of this process. There are hapū that the Claims Trust don't know about but existed, however each of the hapū are covered.

Rohe and whenua is a different issue. The Claims Trust advised that they need to wānanga to discuss this.

The presenter also explained that in order to settle land claims, they need to follow the Crown's process. In the Mōkai Pātea Strategy, there is a process to withdraw should hapū want to. The Claims Trust are currently in the mandating process.

Q5: An attendee asked: how does post-settlement governance entities (PSGE) work?

A5: The presenter explained that they are unsure of when a PSGE will be established. It could take 2 -5 years. There are many steps the Claims Trust need to do before that stage. The slide show shows we are at the beginning of the process.

Everyone will have the opportunity to put in a submission, as shown in the Direct Negotiation Roadmap slide. It is important to get everyone to vote and work through this mandating process first.

Comment from facilitator: The facilitator asked people to keep to the kaupapa and to continue with the kōrero.

Q6: An attendee asked why they are seeking a mandate to settle and negotiate? Stated Ngāti Hinemanu me Ngāti Paki haven't finished their hearings – why doesn't the Claims Trust wait for the report from the hearings?

A6: It was explained that the Claims Trust started in 2004 and have moved through the process since 2011. This is the Crown process to follow, they tell their story and air their grievances to the Crown.

It was also explained that the Claims Trust and everyone involved have a long way to go through the settlement process.

The Claims Trust realised if they wait, they will be no closer to settling. There is a parallel process to direct negotiations. There are 3 things the Claims Trust are certain of:

1. It is an opportunity to tell their story
2. The Crown has directed us to mandate
3. Some of their elders have passed on since 2004, the Claims Trust would like most of them to be around when they do settle.

To eventually settle within a parallel process, this will be

This file note is a final summary report of the hui. It is not a full transcript or a full record of the hui. It is intended for internal Te Puni Kōkiri use only and not public distribution. It may, however, be subject to Official Information Act 1982 requests in the future.

dependent on everyone.

Comment: An attendee stated the Claims Trust should wait for the hearings to get the court report back for Ngāti Hinemanu me Ngāti Paki.

Q7: An attendee asked why does the Claims Trust persist with the rūnanga model, when legislation disestablished rūnanga?

A7: It was explained that it was a system to fit and provide fast reform to assist the people. There are levels of obligations and we must seek the best governance structures for our people.

The Claims Trust have been talking with marae, hapū and iwi to see a way forward. Technically the rūnanga model is what they are using for this hui.

Is there a need to have a wānanga to learn more based on research, people and forum?

Q8: An attendee asked why is Ngāti Hinemanu me Ngāti Paki being rejected to sit alongside Ngāi Te Ohuake and Ngāti Hauti? Stated they're being rejected as an iwi. Ngāti Hine me Ngāti Paki tribes have been in wānanga around whakapapa, hapū and iwi in relation to Treaty settlements.

Stated the benefit of the rūnanga structure is based on the desire of the people.

A8: It was explained that the Claims Trust is a representative of those four iwi. It is up to those hapū/iwi to tell the Claims Trust which hapū/iwi existed but are no longer known. This does not discredit Ngāti Hinemanu me Ngāti Paki as an iwi.

Q9: An attendee asked does Ngāti Hinemanu work with the rūnanga to be at the table, is that correct or not?

A8: It was explained that the rūnanga have said that those are the 4 iwi within Mōkai Pātea claims process. Consideration was given regarding potential impacts of their social groups relating to neighbouring iwi (Ngāti Kahungunu, Ngāti Apa, Ngāti Tūwharetoa, Ngāti Rangī and Crown recognition).

Comment: An attendee thanked the presenter for the explanation and stated that they need to wānanga to discuss the current affairs.

They also stated that they need to facilitate the presentation process, hold a hui to include the fifth iwi representatives and include actions. In their opinion, they recommend this should be part of the voting process. It was also asked: why isn't this case?

The level of discussion is with the iwi and it's the iwi who should tell us. I would like the opportunity to note that.

Comment: An attendee stated they appreciated and accepted that some whānau, marae and hapū are not engaging in many of the hui and are aware of the marae based model as it is a more inclusive process.

This file note is a final summary report of the hui. It is not a full transcript or a full record of the hui. It is intended for internal Te Puni Kōkiri use only and not public distribution. It may, however, be subject to Official Information Act 1982 requests in the future.

	<p>Q9: An attendee commented that this is a draft mandate and still needs to go through the process. It may not be too late for the Claims Trust to discuss the marae by marae process. Hapū would be a more sound way to do a fairer process, it could be a good process.</p> <p>A9: It was explained that this is a hapū based model. Everyone has the opportunity to vote yes or no.</p>
Resolution(s)	<p>The Resolution to be voted on:</p> <p>“That the Mōkai Pātea Waitangi Claims Trust is mandated to represent the Mōkai Pātea Nui Tonu claimant community in negotiations with the Crown for the comprehensive settlement of all of the historical claims of Mōkai Pātea Nui Tonu.”</p>
Voting process	<p>It was explained that voting could occur in three ways:</p> <ul style="list-style-type: none"> • By ballot box at the mandate hui; • By post; or • Online. <p>Voting period-commenced Monday 10 June 2019 and closes 5pm Monday 8 July 2019.</p>
Voting result	<p>The result will be announced after voting closes.</p>
Other comments	<ul style="list-style-type: none"> • The Observer’s role at the Hui was explained accurately. • The Hui was conducted in an open and transparent manner. • Hui attendees had the opportunity to ask questions and questions were answered. • An attendance register was circulated around the Hui. • Contact details for information on mandate and voting. • All trustees gave a brief mihi as to who they are and which marae, hapū, and iwi they are representing. • A 10 minute video shown to attendees, the ‘Moemoeā o Mōkai Pātea o ngā Mokopuna’.

This file note is a final summary report of the hui. It is not a full transcript or a full record of the hui. It is intended for internal Te Puni Kōkiri use only and not public distribution. It may, however, be subject to Official Information Act 1982 requests in the future.

Mōkai Pātea Waitangi Claims Trust ratification hui observer report

Iwi	Mōkai Pātea		
Location	Kingsgate Hotel, Victoria Ave, Whanganui		
Date	Saturday, 15 June 2019		
Start time	5:05pm	Finish time	7:41pm
Chair	Utiku Potaka		
Observer(s)	Donna Docherty and Cindy Penetito, (Te Puni Kōkiri, Te Tai Hauāuru)		
Presenter(s)	Trustees: Utiku Potaka, Maraea Bellamy, Te Rina Warren, Richard Steadman, Hari Benevides Ngāti Hinemanu me Ngāti Paki Heritage Trust: Jordan Winiata-Haines		
Attendance	Total of 97 people*, including 2 Te Puni Kōkiri observers and 1 Independent Returning Officer from Electionz *people were arriving and leaving throughout the hui, so this is an approximate number.		
Purpose	The purpose of the hui was presented as: "To consider that Mōkai Pātea Waitangi Claims Trust represents you in negotiations with the Crown".		
Agenda	<ul style="list-style-type: none"> • Karakia • Mihimihi • Introductions • Hui Kawa • Presentation • Kapu Tī • Question & Answers • Karakia whakamutunga 		
Presentation	All presenters introduced themselves and how they whakapapa to Mōkai Pātea. A PowerPoint presentation was presented to hui attendees, which was followed, by a question and answer session.		
Questions and comments:	Questions were called for after the PowerPoint presentation. Below is a summary of questions and comments: Q1: An attendee asked the following questions:		

This file note is a final summary report of the hui. It is not a full transcript or a full record of the hui. It is intended for internal Te Puni Kōkiri use only and not public distribution. It may, however, be subject to Official Information Act 1982 requests in the future.

- 1. Who made the decision on which iwi and marae are included in the Mōkai Patea Waitangi Treaty Claims, and who gave consent to Mōkai Patea Waitangi Claims Trust to represent their whānau, hapū and iwi.**
- 2. Which hapū of Ngāti Hinemanu me Ngāti Paki gave consent to this mandate?**
- 3. Ngāti Hinemanu have four working marae. Winiata, Omahu, Te Awhina, and Rūnanga**
- 4. Why can't Ngāti Hinemanu be allowed to represent themselves as an iwi?**
- 5. Who let the Claims Trust have the mandate to this mandating process?**

Ngāti Hinemanu me Ngāti Paki are not being represented, the Claims Trust do not speak on their behalf.

A1: It was explained that the Trustee was endorsed by their whānau, hapū and marae, but it is not a representative of all marae. Representation is by hapū and iwi.

It is respective of four iwi and their own processes.

In terms of the four marae, three marae are closely related.

In the claims process, it is whakapapa that entitles whānau. All hapū were asked to ensure to have etiquette representation. Whānau are entitled to and can present their point of view.

Marae are represented within the hapū rūnanga structure. Each iwi group voted individually.

Comment: An attendee commented that if you honestly do not believe Mōkai Patea should represent you - Ngāti Hinemanu me Ngāti Paki - please vote no.

Comment: An attendee felt their questions had not been answered appropriately.

Q2: An attendee asked if a person has more than one iwi, how can the board guarantee that whānau are being heard?

A2: It was explained that everyone gets the opportunity to vote. This hui is a chance for everyone to do just that.

From 2004-2011, representing the four iwi through the settlement process with the respective iwi.

From hearings to taonga tuku iho into our hapū and iwi. That is the drive of the Claims Trust.

The Claims Trust is ready to represent the community. There is a structure in place through the mandate process.

It was also explained that there was a voting process and everyone had the opportunity to put up a representative to the rūnanga.

Comment: An attendee voiced their concern that their

This file note is a final summary report of the hui. It is not a full transcript or a full record of the hui. It is intended for internal Te Puni Kōkiri use only and not public distribution. It may, however, be subject to Official Information Act 1982 requests in the future.

questions were not answered appropriately.

Q3: An attendee asked:

- 1. Why does the Claims Trust disagree that Ngāti Hinemanu me Ngāti Paki are not a rūnanga and that they have been represented?**
- 2. Why does the Claims Trust continue to do this process? It's a Pākehā process?**
- 3. Who are the tūpuna that have told the Claims Trust these whakaaro/kupu?**

A3: It was explained:

1. That no one is disputing their claim, we utilise the trusts information, the Claims Trust have the material to work through the process
2. It is the only process we have to settle claims and grievances. Mandating is right at the beginning of the claims process
3. We have researched the historical records and collated these into books to tell our stories. If the vote is no to mandating process, we will still have these historical accounts, records and our stories. These are available to everyone.

Comment: An attendee voiced their concerns their questions weren't answered appropriately.

Q4: An attendee asked how many people registered as Ngāi Te Ohuake? Without looking at the registration forms, off the top of your head?

A4: A Trustee explained that they came home 21 years ago to do this mahi - to establish the rūnanga, to represent their whānau, their marae and their hapū.

Comment: An attendee asked why they are being sub-servant to others, and asked them to not treat people badly.

Response: A trustee responded that they looked at the collective for the claims process they wanted to be involved as a whānau, hapū and marae. There is information in the Mōkai Patea Strategy booklet.

Comment An attendee stated that they wanted to understand what is happening as there are some that don't understand the process.

Comment: An attendee stated that in respect of the Direct Negotiations Roadmap slide and explanation given by the Claims Trust, where iwi are at in the process and how far they have to go if given the mandate to negotiate on behalf of iwi with the Crown.

Q5: An attendee asked the following questions:

- 1. Clarification of those that registered under Ngāti**

This file note is a final summary report of the hui. It is not a full transcript or a full record of the hui. It is intended for internal Te Puni Kōkiri use only and not public distribution. It may, however, be subject to Official Information Act 1982 requests in the future.

	<p>Hinemanu me Ngāti Paki?</p> <p>2. Did the Claims Trust go back to whānau, hapū, marae to consult with them when they made the decision that Ngāti Hinemanu me Ngāti Paki will not be included in the claims structure as an iwi</p> <p>3. What do you have to do to become an iwi? And why did the Claims Trust oppose Ngāti Hinemanu and Ngāti Paki having iwi status and why?</p> <p>A5: It was explained that Ngāti Hauiti recognises and includes Ngāti Hinemanu. The process the Claims Trust have established elections for Ngāti Hinemanu to join the process. There is a need for someone to talk about this with Ngāti Hinemanu so whānau can agree with the process.</p> <p>Comment: An attendee stated that at the Ngāti Hinemanu me Ngāti Paki hui-ā-rohe, a crown facilitator recognised Ngāti Hinemanu me Ngāti Paki as an iwi.</p> <p>The attendee also stated that Ngāti Whitikaupeka is the tupuna to give a voice to every one of their hapū. It should be a no to this claim from all four iwi groups.</p> <p>Comment from the Claims Trust:</p> <p>It was stated that this kaupapa shouldn't sit in this forum and that it needs to be discussed at a wānanga.</p> <p>There is still more kōrero to be had in the process this is the first step in the process.</p> <p>Q6: An attendee asked what is the voting process?</p> <p>A6: It was explained that the voting process includes those who choose not to register as a member of the Trust.</p> <p>Comment: The hui facilitator asked people to be quiet and calm down so people can ask questions and trustees can reply to the questions. The hui facilitator stated that they want everyone to have the opportunity to ask questions.</p> <p>Comment:</p> <p>Q7: An attendee commented and asked a number of questions:</p> <ol style="list-style-type: none">1. In the interest of Ngāti Hinemanu me Ngāti Paki, this is a government process. Whānau need to do a collective wānanga so whānau can guarantee that whānau are fairly represented.2. In the presentation who or what mandated Ngai Te Ohuake to be there?3. Who is the representative from Winiata Marae to speak on the structure that goes into the strategy? <p>A7: It was explained that as stated in the strategy, hapū have an opportunity to be represented on the rūnanga. There is</p>
--	--

This file note is a final summary report of the hui. It is not a full transcript or a full record of the hui. It is intended for internal Te Puni Kōkiri use only and not public distribution. It may, however, be subject to Official Information Act 1982 requests in the future.

special consideration to the Pokopoko strategy. This will be facilitated as a separate process, as will the Waiouru land-blocks and land-locked lands in the rohe.

The facilitator explained they're ensuring the Claims Trust are at the table to claim identity and our lands. The door is always open, whakawhanaungatanga. There is a commitment to everyone.

If there is a no mandate, or a yes mandate from whānau, there is the opportunity for Ngāti Hinemanu, as part of Ngāi Te Ohuake to participate in the mandating process.

Whakapapa – some choose not to be involved.

Winiata Marae are to have a hui-a-iwi to decide for themselves.

Q8: An attendee asked, why Kōtahitanga - Ngāti Hinemanu me Ngāti Paki were not included in the structure, and when did the thinking change?

A8: It was explained that the Claims Trust wanted to have the support and be inclusive of all. The Claims Trust looked backwards to go forward, they ignored for whatever reason and the Claims Trust have an understanding at that time of Ngāti Hinemanu thinking. The process is inclusive of all of the Ngāi Te Ohuake hapū and marae since the late 1990s – 2000s.

Q9: An attendee asked: who are the whānau/hapū of Ngai Te Ohuake? The map of the Ngai Te Ohuake Core & Share lands, Ngāti Hinemanu own some of those lands and not Ngai Te Ohuake, they have no lands whatsoever in Mōkai Patea. The attendee also asked who gave the Claims Trust mandate?

A9: It was explained that this is the mandate process and whānau are here to vote. This is not a claimant forum.

Comment: An attendee stated the whenua of Ngāti Hinemanu is not part of Ngāi Te Ohuake lands.

Q10: an attendee asked, has the Claims Trust agreed to follow the Crown's process?

A10: It was explained that, yes, the Claims Trust does agree it is a Crown process. The presenter also explained that if the Claims Trust want to be at the table then they need follow the Crown process, which is the only process for settling claims.

Q11: an attendee asked the following questions:

- 1. In regards to the voting, do whānau need to whakapapa to those lands?**
- 2. Why do whānau have to validate that?**
- 3. Has there been any consultation to the process with the land owners? Is the Claims Trust talking for the land-owners?**

This file note is a final summary report of the hui. It is not a full transcript or a full record of the hui. It is intended for internal Te Puni Kōkiri use only and not public distribution. It may, however, be subject to Official Information Act 1982 requests in the future.

	<p>A11: It was explained that validation of whakapapa is needed to protect the whenua/land against outsiders who try and claim lands that are not theirs.</p> <p>The landowner's process primarily relates to land blocks, under Crown Act and WAI claims, it doesn't undermine the landowners, it is a parallel process, and the Claims Trust need to respect the registered land owners.</p> <p>Q12: An attendee asked, how do those affected from land confiscation, address these issues?</p> <p>A12: It was explained that if the Crown has had an impact on you, there is another process on behalf of claimants. The loss of Māori lands to Pākehā was known about.</p> <p>Comment: An attendee stated that if there is wide spread support for this mandate, that then determines what the Claims Trust do next.</p> <p>Comment: An attendee stated there is no representation for Winiata. It was explained that they have a big part to play. The attendee stated they had requested that Ngāti Hinemanu me Ngāti Paki sit equal to other iwi groups of Mōkai Pātea as the fifth iwi.</p>
Resolution(s)	<p>The Resolution to be voted on:</p> <p>“That the Mōkai Pātea Waitangi Claims Trust is mandated to represent the Mōkai Pātea Nui Tonu claimant community in negotiations with the Crown for the comprehensive settlement of all of the historical claims of Mōkai Pātea Nui Tonu.”</p>
Voting process	<p>It was explained that voting could occur in three ways:</p> <ul style="list-style-type: none"> • By ballot box at the mandate hui; • By post; or • Online. <p>Voting period-commenced Monday 10 June 2019 and closes 5pm Monday 8 July 2019.</p>
Voting result	<p>The result will be announced after voting closes.</p>
Other comments	<ul style="list-style-type: none"> • The Observer's role at the hui was explained accurately. • The hui was conducted in an open and transparent manner. • Hui attendees had the opportunity to ask questions and questions were answered. • An attendance register was circulated around the hui. • Contact details for information on mandate and voting. • The role of the Independent Returning Officer explained. • The role of Legal advice for MPWCT role explained. • Jordan Haines-Winiata – Ngāti Hinemanu, introduced by

This file note is a final summary report of the hui. It is not a full transcript or a full record of the hui. It is intended for internal Te Puni Kōkiri use only and not public distribution. It may, however, be subject to Official Information Act 1982 requests in the future.

	<p>Mōkai Pātea Waitangi Claims Trust, to present Ngāti Hinemanu me Ngāti Paki 'KAO Vote' presentation. To vote against the draft mandate strategy.</p> <ul style="list-style-type: none">• The five slides of Ngāti Hinemanu me Ngāti Paki are not the views of Mōkai Pātea Waitangi Claims Trust.• People were asked to keep their questions to one and give others the opportunity to ask their questions. However most Ngāti Hinemanu me Ngāti Paki whānau were asking three questions each minimum.
--	--

This file note is a final summary report of the hui. It is not a full transcript or a full record of the hui. It is intended for internal Te Puni Kōkiri use only and not public distribution. It may, however, be subject to Official Information Act 1982 requests in the future.

Mōkai Pātea mandate hui observer report

Iwi	Mōkai Pātea		
Location	Porirua Club, 1 Lodge Place, Porirua		
Date	Sunday, 16 June 2019		
Start time	1:00pm	Finish time	4:15pm
Chair	Utiku Potaka		
Observer(s)	Julia Aranga-Tuilaepa and Lauren Spring (Te Puni Kōkiri – National Office)		
Presenter(s)	Trustees: Ihakara Hunter, Te Rina Warren, Thomas Curtis, Utiku Potaka, Maraea Bellamy, Richard Steadman Ngāti Hinemanu me Ngāti Paki Heritage Trust: Jordan Winiata-Haines Question/Answer Facilitator: Everard Halbert		
Attendance	Total of 90 people*, including 2 Te Puni Kōkiri observers and 1 Independent Returning Officer from Electionz *people were arriving and leaving throughout the hui, so this is an approximate number.		
Purpose	The purpose of the hui was presented as: "To consider that Mōkai Pātea Waitangi Claims Trust represents you in negotiations with the Crown."		
Agenda	<ul style="list-style-type: none"> • Karakia • Mihimihi • Introductions • Hui Kawa • Presentation • Kapu Tī • Question & Answers • Karakia whakamutunga 		
Presentation	All presenters introduced themselves and how they whakapapa to Mōkai Pātea. A PowerPoint presentation was presented to hui attendees, which was followed, by a question and answer session.		
Questions and comments	Questions were called for after the PowerPoint presentation. Below is a summary of questions and comments: Q1: An attendee asked which hui did the Ngāi Te Ohuake		

This file note is a final summary report of the hui. It is not a full transcript or a full record of the hui. It is intended for internal Te Puni Kōkiri use only and not public distribution. It may, however, be subject to Official Information Act 1982 requests in the future.

delegate get given the mandate to represent Ngāti Hinemanu and Ngāti Paki?

A1: The presenter explained that she was elected as a representative of Ngāi Te Ohuake at an Annual General Meeting (AGM) in Taihape in 2013, not specifically as part of Ngāti Hinemanu or Ngāti Paki, but stated she still believes she has the right to represent Ngāi Te Ohuake.

Comment: The same attendee asked a follow up question, stating that this was not answering her question, and she wanted to know which Ngāti Hinemanu or Ngāti Paki hui the delegate was given mandate at.

Response: No response was provided and the facilitator moved on to another attendee who wanted to ask a question.

Q2: An attendee asked whether the Trust feels confident that they've done all the research necessary to move into the next phase.

A2: It was explained that the Mōkai Pātea Waitangi Claims Trust (the Claims Trust) would only feel happy going into direct negotiations with the Crown, where they felt they'd done enough research, and they slowed down the process to date in order to ensure this.

Q3: An attendee, referring to the map of Ngāi Te Ohuake lands which the presenters provided, asked who gave the Trust the mandate for all these other hapū to take their mandate and Wai claims.

A3: It was explained that at the Ngāi Te Ohuake AGMs, representatives were appointed from the relevant hapū.

Q4: An attendee stated that the Crown's processes around large natural groupings were not in line with tikanga, and he would prefer landowners of the whenua to call the shots, stating that he believed there were other options for settlement. He asked why the Claims Trust was following the Crown approach.

A4: The presenter said that he agreed with the attendee's statement that the Crown process was not in line with tikanga, recognised that there is a power imbalance. The presenter also explained that the Claims Trust is trying to do the best it can to base this work on the ways of their tūpuna, but the current process is the only process for any iwi to follow. Ultimately the decision of whether or not to move forward sits with the people, but the Claims Trust wants to be able to move forward and not be stuck.

Q5: An attendee asked how the trust ensures that all hapū voices are heard.

A5: It was explained that the rūnanga is represented by the Claims Trust, whose representatives are made up of members of each hapū, and the hapū themselves elect members to the rūnanga. The presenter recognised Ngāti Hinemanu as a large hapū, and recognised that all four lines from Hinemanu have

This file note is a final summary report of the hui. It is not a full transcript or a full record of the hui. It is intended for internal Te Puni Kōkiri use only and not public distribution. It may, however, be subject to Official Information Act 1982 requests in the future.

their own representation.

Q6: An attendee asked how does the Claims Trust validate supporting a group that is trying to assimilate and victimise the whanaunga of these hapū.

A6: It was explained that the Trust sees its mahi as honouring, rather than assimilating whakapapa lines, and that they are not assimilating, but asserting distinct whakapapa and whenua in the rohe. Stated their view that they feel that everyone has a place in the Trust, and it's their job to represent all 35 hapū.

Q7: An attendee asked where in the wider process does this hui sit?

A7: It was explained that this is the beginning of the process, and there is a lot of mahi to come. This part of the process will continue until they find a resolution, as they can't move forward without the mandate of the people. This is in a parallel process with claims hearings – the natural order might be to wait until these have been heard and the results released, however the Claims Trust feels that they don't have the time to wait on this.

Comment: A member of the Claims Trust explained that they are in a parallel process and that the Treaty claim hearings are continuing. Explained that some people may say that it was a natural progression to complete the hearings and wait for the release of the reports then start this process. It was explained that the Claims Trust do not have time and would like the elders who started this journey to see the end.

Q8: An attendee asked a question in regards to the Claims Trust process, if Ngāti Hinemanu ki Whitikaupeka, Ngāti Hinemanu ki Ngāi Te Ohuake, and Ngāti Hinemanu ki Ngāti Hauiti decide whether they want to withdraw collectively and be represented as the 5th iwi in the structure, and the attendee also asked what is the Claims Trust process to have that accepted?

A8: It was explained that any hapū or iwi can withdraw from the process, and they are also more than welcome to return. In regards to being the 5th iwi, it was advised that that is not something the Claims Trust can approve. Approval needs to go back to the other iwi in the rohe and the attendee was advised to discuss it with them.

Q9: The same attendee asked a further question: should Ngāti Hinemanu ki Whitikaupeka, Ngāti Hinemanu ki Ngāi Te Ohuake, Ngāti Hinemanu ki Ngāti Hauiti decide within themselves that they wish to withdraw, can they be represented as a 5th iwi? What is the Claims Trust process and how are those decisions made?

A9: It was explained within the mandate strategy, there is an option to withdraw and you can re-join at any time. In terms of the 5th iwi it was explained that it is not the place of the Claims Trust to determine that, that decision has to come from the people.

This file note is a final summary report of the hui. It is not a full transcript or a full record of the hui. It is intended for internal Te Puni Kōkiri use only and not public distribution. It may, however, be subject to Official Information Act 1982 requests in the future.

Q10: The same attendee asked a further question, that if the uri make that decision collectively, is it just a matter of informing the Claims Trust and it automatically happens, or what is the process?

A10: The presenter stated their personal view, that as a member of the Claims Trust, it takes more than just your 'wish' to become an iwi, it has to involve other iwi that have to recognise you.

Q11: The same attendee asked a further question, that if the other iwi do agree, what is the process the Claims Trust would undertake in response to this?

A11: It was explained, once mandate has been approved, then a hapū has the ability to withdraw. The next step would be a discussion with the appropriate rūnanga (who represent the hapū). The rūnanga makes the decisions about hapū and iwi. The Claims Trust are representative of each of the rūnanga. It was also explained that if the rūnanga directed the Claims Trust to do a certain thing, the Claims Trust are obligated to follow.

Q12: The same attendee clarified his question, asking does the decision need to be supported by the rūnanga?

A12: It was explained that the Claims Trust is representative of the four rūnanga iwi, and that the Claims Trust takes its direction from them, and any kōrero about iwi status will need to come back to the Claims Trust through the rūnanga.

Comment: An attendee stated that he was prepared to discuss with Ngāti Hinemanu land owners to make their own decisions on whether or not they would like to be part of this process.

The Trust Claims responded by stating they can assure everybody that the Ngāti Hinemanu land came from Hinemanu's tūpuna, but not her father (Ngāti Kahungunu).

Q13: An attendee asked the Claims Trust why is it that they didn't allow the Ngāti Hinemanu me Ngāti Paki database to be given to the election services?

A13: It was explained that processes need to be done in a particular way in specific timeframes. When the Claims Trust requested the Ngāti Hinemanu me Ngāti Paki database, that unfortunately time had passed and they were not able to be included.

Q14: An attendee asked if the Claims Trust is being inclusive with its approach?

A14: It was explained that the Trusts Claims focus is on being inclusive. The Claims Trust look at whakapapa and determine how those things fit on those place – they get guidance from their tūpuna. Explained that it is not up to the Claims Trust to advise where each iwi and hapū belong. A Trustee explained that the Claims Trust are being inclusive hence why there are

This file note is a final summary report of the hui. It is not a full transcript or a full record of the hui. It is intended for internal Te Puni Kōkiri use only and not public distribution. It may, however, be subject to Official Information Act 1982 requests in the future.

	<p>so many hapū – this is to ensure no one is left out.</p> <p>Comment: a Trustee commented regarding the 35 hapū that a discussion needs to happen to discuss any issues with the rūnanga, to ensure each hapū is looked after. Those discussions and any decisions will be relayed to the Claims Trust.</p>
Resolution(s)	<p>The Resolution to be voted on:</p> <p>“That the Mōkai Pātea Waitangi Claims Trust is mandated to represent the Mōkai Pātea Nui Tonu claimant community in negotiations with the Crown for the comprehensive settlement of all of the historical claims of Mōkai Pātea Nui Tonu.”</p>
Voting process	<p>It was explained that voting could occur in three ways:</p> <ul style="list-style-type: none"> • By ballot box at Mandate Hui; • By post or; • Online. <p>Voting period-commenced Monday 10 June 2019 and closes 5pm Monday 8 July 2019</p>
Voting result	<p>The result will be announced after voting closes.</p>
Other comments	<ul style="list-style-type: none"> • The Observer’s role at the hui was explained accurately. • The hui was conducted in an open and transparent manner. • Hui attendees had the opportunity to ask questions, however a lot of the questions were not adequately answered. • It was clear that members of Ngāti Hinemanu and Ngāti Paki were not satisfied with this process, particularly the subsuming of their two hapū into Ngāi Te Ohuake for the purposes of settlement. • There was a definite sense of discontentment and mild disorder in the room, especially during the question and answer portion, where the room occasionally got quite rowdy and had to be calmed by the facilitator. • An attendance register was circulated around the hui.

This file note is a final summary report of the hui. It is not a full transcript or a full record of the hui. It is intended for internal Te Puni Kōkiri use only and not public distribution. It may, however, be subject to Official Information Act 1982 requests in the future.

Mōkai Pātea Waitangi Claims Trust ratification hui observer report

Iwi	Mōkai Pātea		
Location	Tokaanu Hotel Conference Room, Tūrangi		
Date	Friday, 21 June 2019		
Start time	6.30pm	Finish time	8.55pm
Chair	Utiku Potaka		
Observer(s)	Kim Wetini (Te Puni Kōkiri Waikato-Waiāriki)		
Presenter(s)	Trustees: Maraea Bellamy, Te Rina Warren, Barbara Ball, Moira Raukawa-Haskell. Ngāti Hinemanu me Ngāti Paki Heritage Trust: Jordan Winiata-Haines. Hapū/Iwi Facilitator: Richard Steadman.		
Attendance	Total of 80 People*, including 1 Te Puni Kōkiri observer and 1 Independent Returning Officer from Electionz *people were arriving and leaving throughout the hui, so this is an approximate number.		
Purpose	The purpose of the hui was presented as: "To consider that Mōkai Pātea Waitangi Claims Trust represents you in negotiations with the Crown."		
Agenda	<ul style="list-style-type: none"> • Karakia • Mihimihi • Introductions • Apologies • Hui Kawa • Presentation • Kapu Tī • Question & Answers • Karakia whakamutunga 		
Presentation	All presenters introduced themselves and how they whakapapa to Mōkai Pātea. A PowerPoint presentation was presented to hui attendees, which was followed, by a question and answer session.		
Questions and comments	Questions were called for after the PowerPoint presentation. Below is a summary of questions and comments:		

This file note is a final summary report of the hui. It is not a full transcript or a full record of the hui. It is intended for internal Te Puni Kōkiri use only and not public distribution. It may, however, be subject to Official Information Act 1982 requests in the future.

Q1: An attendee asked if her Pākehā daughter-in-law from Ngāpuhi was allowed to vote?

A1: The presenter explained no, and to refer to the whakapapa, individuals need to confirm they whakapapa to Mōkai Pātea otherwise they cannot vote.

Q2: An attendee asked how the mandate of Mōkai Pātea fits in with Waitangi Claims of Ngāti Tūwharetoa.

A2: It was explained over recent years, they have tried to establish relationships with Ngāti Tūwharetoa and have drawn up a Memorandum of Understanding (MOU) that clearly outlines the relationship, understanding and land interests of each iwi. The Claims Trust have a tripartite agreement with Ngāti Tūwharetoa and Ngāti Rangi, reaching a basic agreement of bordering interests.

Q3: An attendee commented that there are 35 hapū with some looking for whakapapa, some are dormant. The attendee asked how many are there and how many are not established or are active?

A3: The presenter explained there is a fine balance between what the Claims Trust have, and what they know. The presenter described the whakapapa and suggested whānau should approach the hapū for a response.

Q4: An attendee asked a number of questions, including:

a) Did the presenters have a slide of the MOU with neighbouring iwi?

b) Has the MOU been carried over to the PSGE or direct with the new entity?

c) Does Claims Trust have an MOU with He Toa Takitini?

A4: It was explained that, no, there is no slide of the MOU with neighbouring iwi. It was also explained that the MOU is enduring and as long as required and it is held with this Claims Trust and if mandated to be decided upon by the PSGE when it is set up. The MOU is between iwi, not with the Claims Trust and iwi.

Q5: An attendee asked the MOU is between He Toa Takitini and Ngā iwi nui tonu as presented as individual iwi?

A5: It was explained that it was led by Ngāi Te Ohuake, and Ngāti Kahungunu, and support with iwi in the confederation.

Q6: An attendee asked if Ngāi Te Ohuake lands has ownership of Mōkai Pātea land, yet there are 3 hapū in Ngāti Kahungunu that appear to not have any interests. The attendee asked in relation to Ngāti Hinemanu and Ngāti Paki, how many are registered Mōkai Pātea owners, which voted on this mandate?

A6: It was explained that Hinemanu land has been disputed and debated. Mandating has been completed, that is what this

This file note is a final summary report of the hui. It is not a full transcript or a full record of the hui. It is intended for internal Te Puni Kōkiri use only and not public distribution. It may, however, be subject to Official Information Act 1982 requests in the future.

hui is about, to move forward.

Q7: An attendee stated in early 1980 there was confusion about Ngāi Te Ohuake and Moawhango joint whakapapa, and asked why did the Claims Trust put that person down?

A7: A sincere apology was provided.

Q8: An attendee asked what the future for rangatahi and kaumātua, might look like in the end?

A8: It was explained that this was indicated in the video presentation by all the rangatahi. Explained that they are not interested in the politics. The current behaviour is not the best for the whānau and tamariki and looking at the future. If mandated, the Claims Trust look towards a settlement for cultural, financial and environmental redress. These are the key kaupapa to move forward to talk with whānau and hapū.

Q9: An attendee asked if the mandate was voted down, what this meant for the claims going forward.

A9: It was explained that everything started in 2004 and included representatives from all groups. The Claims Trust was established in 2011 to enter into the Treaty Settlement process, and now to obtain a mandate. Explained that if there is a strong no vote, then the Claims Trust would go back to the drawing board, which meant all the previous time spend on the Settlement would be wasted. It was explained that if the Claims Trust are not happy with this model, then they are required to go back and seek what everyone wants. It will take more time.

Q10: An attendee asked, regarding rangatahi and kaumātua going forward, is the Claims Trust aware of what Ngāti Hinemanu and Ngāti Paki are doing? The attendee specifically asked about the Ngāti Ohuake representative on the Claims Trust.

A10: It was explained that they would not expect anything less, and acknowledged the strong and developed hapū activity being delivered and the ability to organise the rūnanga – Ngāti Hinemanu me Ngāti Paki Heritage Trust (the Heritage Trust). The question was posed: where would Mōkai Pātea be now? It was explained that the only thing tripping them up is the factions within the Claims Trust.

Q11: An attendee asked which whānau within the Claims Trust had identified land on this side of the Rangitikei, and what happens to those on the other side, would they be part of the Claims Trust?

A11: It was explained that the maps portray what the Claims Trust had been explaining throughout the presentation. Stated Ngāti Hinemanu has interests in Mōkai Pātea and Kahungunu. The whenua in Heretaunga is under Kahungunu. Some hapū are or need to strengthen their ties.

Q12: An attendee stated, that in respect of 2008, when

This file note is a final summary report of the hui. It is not a full transcript or a full record of the hui. It is intended for internal Te Puni Kōkiri use only and not public distribution. It may, however, be subject to Official Information Act 1982 requests in the future.

	<p>Ngāti Hinemanu, Ngāti Paki and He Toa Takitini was formed, it was funded by the Office of Treaty Settlements at the time for major claims back to 1868. The attendee asked if anyone had actually spoken with the individual claimants, to ensure that their claims have been included in this claim.</p> <p>A12: It was explained that as part of the process, the Crown has requested the Claims Trust to include these claims, and a list was provided in the presentation. It was also stated that, unfortunately, individual claimants had not been notified of this process, and had not been contacted.</p> <p>Q13: An attendee from Ngāti Ohuake asked if their husband can vote?</p> <p>A13: It was explained that they should go back to the blocks, find their tūpuna and whakapapa and to have discussions with their marae to identify their voting rights.</p> <p>Q&A Facilitator Comment: An attendee commented that Ngāti Hinemanu, Ngāti Paki and Mōkai Pātea have issues to discuss. Stated the information had been given to make a vote and that there are other iwi/hapū here that have not been heard from.</p> <p>Participant comment: Noted they were ‘allowed in’ by Ngāti Hinemanu and Ngāti Paki. The land is with the people and they need to do something about how everyone at the hui manage to talk about rangatahi and kaumātua but they behave like children and argue. Their old people found ways to move forward and stated the allegiance was with Ngāti Hinemanu and Ngāti Paki although the land interests were with Mōkai Pātea and questioned where those like themselves belong as Ngāti Tamakōpiri who get to only visit their whenua. Stated the Crown is dividing them through the process. They need to sort their differences and stay strong, the problem cannot be a vote for a yes or no.</p> <p>Comment: The facilitator acknowledged the need for the Claims Trust to deal with the issues raised and that the whakapapa is there to proceed.</p>
<p>Resolution(s)</p>	<p>The Resolution to be voted on:</p> <p>“That the Mōkai Pātea Waitangi Claims Trust is mandated to represent the Mōkai Pātea Nui Tonu claimant community in negotiations with the Crown for the comprehensive settlement of all of the historical claims of Mōkai Pātea Nui Tonu.”</p>
<p>Voting process</p>	<p>It was explained that voting could occur in three ways:</p> <ul style="list-style-type: none"> • By ballot box at the mandate hui; • By post; or • Online. <p>Voting period-commenced Monday 10 June 2019 and closes</p>

This file note is a final summary report of the hui. It is not a full transcript or a full record of the hui. It is intended for internal Te Puni Kōkiri use only and not public distribution. It may, however, be subject to Official Information Act 1982 requests in the future.

	5pm Monday 8 July 2019.
Voting result	The result will be announced after voting closes.
Other comments	<ul style="list-style-type: none"> • The Observer arrived 30 minutes late to the hui. • The Observers role was explained accurately. • The hui was conducted in an open and transparent manner. • Hui attendees had the opportunity to ask questions and questions were answered as best as possible. • An attendance register was signed on arrival. • Contact details for information on ratification and voting were provided for hui participants. • Some participants voiced their opinions above others • A group discussion became distracting to the hui. • Noted a call for the Chair to provide fair meeting etiquette when a participant had the floor and was talked over.

This file note is a final summary report of the hui. It is not a full transcript or a full record of the hui. It is intended for internal Te Puni Kōkiri use only and not public distribution. It may, however, be subject to Official Information Act 1982 requests in the future.

Mōkai Pātea Waitangi Claims Trust ratification hui observer report

Iwi	Mōkai Pātea		
Location	Taradale Hall		
Date	Saturday 22 June 2019		
Start time	11.00am	Finish time	1.47pm
Chair	Utiku Potaka		
Observer(s)	Monique Heke and Cassie Hazel (Te Puni Kōkiri Ikaroa-Rāwhiti)		
Presenter(s)	<p>Trustees: Ihakara Hunter, Barbara Ball, Te Rina Warren, Moira Raukawa-Haskell, Utiku Potaka, Maraea Bellamy</p> <p>Ngāti Hinemanu me Ngāti Paki Heritage Trust: Jordan Winiata-Haines</p> <p>Hapū/Iwi Facilitator: Richard Steadman</p> <p>Question/Answer Facilitator: Laurise Makowharemahihi</p>		
Attendance	<p>Total of 110 people*, including 2 Te Puni Kōkiri observers and 1 Independent Returning Officer from Electionz</p> <p>*people were arriving and leaving throughout the hui, so this is an approximate number.</p>		
Purpose	<p>The purpose of the hui was presented as:</p> <p>“To consider that Mōkai Pātea Waitangi Claims Trust represents you in negotiations with the Crown”.</p>		
Agenda	<ul style="list-style-type: none"> • Karakia • Mihimihi • Introductions • Hui Kawa • Presentation • Kapu Tī • Question & Answers • Karakia whakamutunga 		
Presentation	<p>All presenters introduced themselves and how they whakapapa to Mōkai Pātea.</p> <p>A PowerPoint presentation was presented to hui attendees, which was followed, by a question and answer session.</p>		
Questions and	<p>Questions were called for after the PowerPoint presentation. Below is a summary of questions and comments:</p>		

This file note is a final summary report of the hui. It is not a full transcript or a full record of the hui. It is intended for internal Te Puni Kōkiri use only and not public distribution. It may, however, be subject to Official Information Act 1982 requests in the future.

comments	<p>Q1: An attendee asked, who has given the Mōkai Pātea Waitangi Claims Trust (the Claims Trust) the mandate to change those core lands of Ngāi Te Ohuake, the Claims Trust has taken the mana as this is what the mandate says.</p> <p>A1: The presenter explained that the Claims Trust are asking for a mandate.</p> <p>Q2: An attendee asked, in respect of the four to five claims which directly involves them, to explain how the Claims Trust are going to address those claims when they know nothing about them?</p> <p>A2: It was explained that all claims are valid, there are others as well; the Claims Trust wants all claims to be heard right to the end. Each claim will be able to work together within the mandate structure. By coming together, it allows the Claims Trust to make sure that this is properly executed.</p> <p>The Claims Trust advised that they will have a special hearing regarding land locked lands.</p> <p>Q3: An attendee asked that a minute be provided by the Māori Land Court, to state that Te Upokoiri is an iwi, not a hapū. The attendee asked why didn't the Claims Trust come to Omaha before this mandate came about? Why wasn't this type of hui held at Omaha?</p> <p>A3: The presenter explained that this is the first time the Claims Trust have heard that Upokoiri is an iwi. It was also explained that due to friction and tension, the Claims Trust chose an independent venue. The Claims Trust, if invited, will organise an information hui in Omaha.</p> <p>Q4: An attendee asked, what about the rest of the hapū? When did hapū start saying they are now an iwi?</p> <p>A4: It was explained, to ensure all 35 lines that are connected are represented efficiently. It was also explained that they have fluid choice to join together and then can be called an iwi.</p> <p>Q5: An attendee conveyed their concerns regarding Opaea Marae being neglected. The attendee asked, are there people at this hui that feel that those who whakapapa to Opaea Marae have been overlooked (raise your hand)?</p> <p>A5: ½ raised hands.</p> <p>Q6: An attendee quoted different Act numbers and sections, and explained a grievance. In 1867, the Land Court Act arrested Winiata – he was not alienated, he was removed.</p> <p>A6: It was explained that the Claims Trust are seeking mandate to also address grievances – the Claims Trust can take this into account and incorporate this at a later date as they are not lawyers.</p> <p>Q7: An attendee commented they have been to hui before this and wondered why isn't the Claims Trust allowing Ngāti Hinemanu to be represented as a 5th iwi?</p> <p>A7: It was explained that based on the current structure, Ngāti</p>
-----------------	--

This file note is a final summary report of the hui. It is not a full transcript or a full record of the hui. It is intended for internal Te Puni Kōkiri use only and not public distribution. It may, however, be subject to Official Information Act 1982 requests in the future.

	<p>Hinemanu is sufficiently being represented.</p> <p>Comment: An attendee stated that some hapū have more right than other hapū. If the Claims Trust is going to allow hapū more say than others do, then the Claims Trust will not get their vote.</p>
Resolution(s)	<p>The Resolution to be voted on:</p> <p>“That the Mōkai Pātea Waitangi Claims Trust is mandated to represent the Mōkai Pātea Nui Tonu claimant community in negotiations with the Crown for the comprehensive settlement of all of the historical claims of Mōkai Pātea Nui Tonu.”</p>
Voting process	<p>It was explained that voting could occur in three ways:</p> <ul style="list-style-type: none"> • By ballot box at the mandate hui; • By post; or • Online. <p>Voting period-commenced Monday 10 June 2019 and closes 5pm Monday 8 July 2019.</p>
Voting result	<p>The result will be announced after voting closes.</p>
Other comments	<ul style="list-style-type: none"> • The Observer’s role at the hui was explained accurately. • The hui was conducted in an open and transparent manner. • Hui attendees had the opportunity to ask questions and questions were answered. • An attendance register was presented at the entrance of the hui. • Mōkai Pātea pamphlet with voting information was available on the seats for the attendees (not enough seats provided). • Maps of boundaries and structure slide were available at the back of the room as they were too small to see on the presentation. • Attendees were provided with a small piece of paper to write questions if they had any and hand it to the facilitator Laurisse who was identified at the beginning of the hui.

This file note is a final summary report of the hui. It is not a full transcript or a full record of the hui. It is intended for internal Te Puni Kōkiri use only and not public distribution. It may, however, be subject to Official Information Act 1982 requests in the future.

Mōkai Pātea Waitangi Claims Trust ratification hui observer report

Iwi	Mōkai Pātea		
Location	Holiday Inn Auckland Airport, Auckland		
Date	Sunday, 23 June 2019		
Start time	11:04am	Finish time	1:40pm
Chair	Utiku Potaka		
Observer(s)	Ngawai Hernandez-Walden and Karena Stephens-Wilson (Te Puni Kōkiri Tāmaki Makaurau)		
Presenter(s)	Ihakara Hunter, Barbara Ball, Te Rina Warren, Moira Raukawa-Haskell, Utiku Potaka, Maraea Bellamy Ngāti Hinemanu me Ngāti Paki Heritage Trust: Jordan Winiata-Haines Question/Answer Facilitator: Tama Potaka		
Attendance	Total of 80*, including 2 Te Puni Kōkiri observers and 1 Independent Returning Officer from Electionz. *people were arriving and leaving throughout the hui, so this is an approximate number.		
Purpose	The purpose of the hui was presented as: "To consider that Mōkai Pātea Waitangi Claims Trust represents you in negotiations with the Crown."		
Agenda	<ul style="list-style-type: none"> • Mihimihi • Karakia • Hui Kawa • Presentation • Questions & Answers • Karakia Whakamutunga 		
Kawa	<ul style="list-style-type: none"> • Important that all people can hear • Questions at the end • A handout will be available at the end of the hui • No live streaming 		

This file note is a final summary report of the hui. It is not a full transcript or a full record of the hui. It is intended for internal Te Puni Kōkiri use only and not public distribution. It may, however, be subject to Official Information Act 1982 requests in the future.

<p>Presentation</p>	<p>All presenters introduced themselves and how they whakapapa to Mōkai Pātea.</p> <p>A PowerPoint presentation was presented to hui attendees, which was followed, by a question and answer session.</p>
	<p>Questions were called for after the PowerPoint presentation. Below is a summary of questions and comments:</p> <p>Q1: An attendee asked, in regards to the voting process, what kind of majority is required?</p> <p>A1: It was explained that a broad or significant support is required. Not just a majority.</p> <p>Q2: An attendee asked, has the Mōkai Pātea Waitangi Claims Trust (the Claims Trust) considered any possible court injunctions from Ngāti Hinemanu me Ngāti Paki?</p> <p>A2: It was explained that there may be challenges in the future. Hence why the Claims Trust follow a robust process, which in effect is the Crown process. The Claims Trust do not want to assume the outcome but will be prepared for the future.</p> <p>Q3: An attendee asked, if a mandate is not obtained, who will deal with the mandate? The attendee asked for a response from both Trusts.</p> <p>A3: The Claims Trust explained that they started in 2011, to get the Claims Trust to this point. They stated that if the Claims Trust does not get the mandate to progress, it is highly likely to take another 8 years to get back to this point.</p> <p>The Ngāti Hinemanu me Ngāti Paki Heritage Trust (the Heritage Trust) explained that they will have another kōrero with Mōkai Pātea to ensure there is room for all. The Heritage Trust stated they do not see it being another 8 years, as they feel that it will take one hui to discuss these matters.</p> <p>Q4: Referring to the Mōkai Pātea claimant community slide, an attendee asked, how many of these hapū are actually working hapū, marae etc? How are they recognised, through the research? Who gave the mandate for the other hapū to be included in this?</p> <p>A4: It was explained that the Claims Trusts' perspective ever since the 1800s have been alienated and disconnected from their hapū/marae. A product of the Crown's injections to alienate from our whenua. The Claims Trust said they feel they have found solace and tautoko as working as a larger group.</p> <p>Te Rina Warren explained and acknowledged her whakapapa, if she has a marae or not, identified and located herself within a historical experience. She stated she is connected as Mōkai Pātea through whakapapa lines. It is not for the Claims Trust to define if the hapū is dormant or not, this is based on whakapapa.</p> <p>Utiku Potaka explained that the purpose of these hui is for the</p>

This file note is a final summary report of the hui. It is not a full transcript or a full record of the hui. It is intended for internal Te Puni Kōkiri use only and not public distribution. It may, however, be subject to Official Information Act 1982 requests in the future.

	<p>Claims Trust to seek mandate to represent Mōkai Pātea in the Treaty settlement negotiations.</p> <p>Q5: Referring to Wai 1835 claim, an attendee asked, is there anything to the same extent of the Wai 1835 commercial redress?</p> <p>A5: It was explained that the army lands and Taihape township are. It may not answer directly but identifies where there is possible redress.</p> <p>Q6: Who are the representatives of the Heritage Trust? What is the tikanga on the representation and are they uri?</p> <p>A6: The Claims Trust referred this question to the Heritage Trust to answer.</p> <p>The Heritage Trust explained that tikanga comes from the marae. The claims process is not a tikanga process and they have to adapt their tikanga to fit the Crown process.</p> <p>Q7: An attendee asked, when will they find out as a community what the decision/outcome for this process will be? Who will make the announcement?</p> <p>A7: It was explained that there is another process involved. The Claims Trust explained that they are expecting to receive the results around 10 July. Part of the process is to verify everything which may take another week.</p> <p>The Claims Trust will make the announcement. Election Services formally advise of the results, special votes will still be verified. The same as a normal election process.</p> <p>Q8: An attendee asked, if the process fails, as being proposed, what happens next?</p> <p>A8: The presenter explained that it has taken 7-8 years to get to this point, and that it may take another 7-8 years to get this point again under a new form.</p> <p>Q9: An attendee asked, if you are given the mandate, does part of the process include the structure of the post-settlement trust?</p> <p>A9: It was explained that it could, but will come under the Post-Settlement Governance Entity (PSGE). It was explained that the main purpose of the Claims Trust is to negotiate a settlement. The people need to tell the Claims Trust what it will look like post deed and settlement.</p> <p>Q10: Referring to the Ngāi Te Ohuake map land owners, an attendee asked, why are they not being accepted as an iwi?</p> <p>A10: It was explained that the maps are derived to the uri in the whakapapa that is in the collective. Ngāi Te Ohuake and Ngāti Whitikaupeka do not own those lands. The Claims Trust are not saying they own those lands. The Claims Trust does not own those lands. The Claims Trusts role is to negotiate the</p>
--	---

This file note is a final summary report of the hui. It is not a full transcript or a full record of the hui. It is intended for internal Te Puni Kōkiri use only and not public distribution. It may, however, be subject to Official Information Act 1982 requests in the future.

	<p>lands. The Claims Trust do not have the mandate or the ownership.</p> <p>Q11: An attendee asked, why are Ngāti Kahungunu not recognised?</p> <p>A11: It was explained that this structure is based on the collective whakapapa of Tamatea Pōkaiwhenua. One of those children has been used as a centre point of Tamakōpiri. It's different for each iwi, the common denominator is Tamatea Pōkaiwhenua.</p> <p>This is not made up but was explained that this is what is known from whakapapa, and information shared as Mōkai Pātea of this whenua.</p> <p>Question/Answer Facilitator: An acknowledgment was provided to all those who attended.</p>
Resolution(s)	<p>The Resolution to be voted on:</p> <p>“That the Mōkai Pātea Waitangi Claims Trust is mandated to represent the Mōkai Pātea Nui Tonu claimant community in negotiations with the Crown for the comprehensive settlement of all of the historical claims of Mōkai Pātea Nui Tonu.”</p>
Voting process	<p>It was explained that voting could occur in three ways:</p> <ul style="list-style-type: none"> • By ballot box at the mandate hui; • By post; or • Online. <p>Voting period-commenced Monday 10 June 2019 and closes 5pm Monday 8 July 2019</p>
Voting result	<p>The result will be announced after voting closes.</p>
Other comments	<ul style="list-style-type: none"> • The Observer's role at the hui was explained accurately. • The hui was conducted in an open and transparent manner with the words “aroha ki te tangata” utilised regularly to maintain order. • Hui attendees had the opportunity to ask questions and questions were answered as best as possible. • An attendance register was located at the registration desk as you entered the hui. • Contact details for information on ratification and voting. • Voting booth and information on voting was located next to the registration desk.

This file note is a final summary report of the hui. It is not a full transcript or a full record of the hui. It is intended for internal Te Puni Kōkiri use only and not public distribution. It may, however, be subject to Official Information Act 1982 requests in the future.

Appendix R

MŌKAI PĀTEA WAITANGI CLAIMS TRUST 2019 DECLARATION OF RESULT OF MANDATE POLL

I hereby declare the result of the Mandate Poll held on 8 July 2019.

RESOLUTION:

That the Mōkai Pātea Waitangi Claims Trust is mandated to represent the claimant community in negotiations with the Crown for the comprehensive settlement of all of the historical claims of Mōkai Pātea Nui Tonu.

Option	Votes Received
FOR	758
AGAINST	183
<i>(Blank votes 5)</i>	

2,370 voting papers were issued and 946 votes were cast, this being a 39.92% return.

Of those who cast their vote, 80.13% were in favour of the Mōkai Pātea Waitangi Claims Trust's mandate proposal.

Dated at Auckland, 19 July 2019.

Dale Ofsoke, Returning Officer
Independent Election Services Ltd
for Mōkai Pātea Waitangi Claims Trust



Appendix S

Summary of Complaint re Mandate Voting Process and MPWCT response

Following the voting process, a series of allegations of improper process were raised on behalf of the Ngati Hinemanu me Ngati Paki Heritage Trust (NHNPHT) directly to the Minister. Mōkai Pātea Waitangi Claims Trust obtained a written response from the Returning Officer, Independent Election Services Limited, and responded to the allegations in full. This is an abridged summary of the allegations and response.

Summary of Complaint	MPWCT response
<i>That individuals not registered with MPWCT had received contradictory and inconsistent advice on the process concerning the "green form"</i>	<p>This allegation is rejected.</p> <p>Consistent advice given to voters.</p> <ul style="list-style-type: none"> • Voting Information form stated that Special votes required identification of whakapapa for verification by the MPWCT membership committee • The Special Voting form included the whakapapa chart • The mandate strategy set out the process for verification • The MPWCT website included that information • The mandating hui explained the requirements for special votes to include whakapapa verification • When queries were raised with IES, the consistent information was given
<i>There was no whakapapa verification form in the special voting pack</i>	The whakapapa verification form is on the MPWCT registration form, and the Special Voting information specified that the voter must have his or her whakapapa verified in order to vote
<i>Allegation of Irregularity – Breakdown of Special Vote numbers</i>	<p>Of the 255 special votes that were not allowed, the Returning Officer has provided us with his reasons for that decision. 196 special votes (approximately 77%) were disallowed because the voter had not completed the application for verification.</p> <p>Only 44 special votes (17%) were disallowed because the Membership Committee had advised the Returning Officer that an application for verification had not been approved.</p>
<i>Breach of justice not to allow NHNPHT member on Membership Committee</i>	<p>The composition of the Membership Committee is set out under the Deed of Trust, and in the mandate strategy.</p> <p>If NHNPHT has information to provide to support a particular application for verification, then such information will be properly considered by the Membership Committee.</p>

11 March 2020

Utiku Potaka
Chairperson
Mōkai Pātea Waitangi Claims Trust
Taihape

By email: utiku.potaka@mokaipateaservices.org.nz

Re. Mōkai Pātea Waitangi Claims Trust mandate vote

Tēnā koe

As you know, on 29 July 2019, Ms Annette Sykes wrote to the Minister for Treaty of Waitangi Negotiations, the Minister for Māori Development and the Member for Te Tai Hauāuru on behalf of Ngāti Hinemanu me Ngāti Paki Heritage Trust (the Heritage Trust), which noted the Heritage Trust's issues with the Mōkai Pātea Waitangi Claims Trust's (MPWCT) mandate vote process related to the casting and counting of special votes.

On 16 October 2019, the Minister for Treaty of Waitangi Negotiations and the Minister for Māori Development responded to Ms Sykes noting that steps had already been taken to address some of those concerns and that officials would provide a detailed response on the mandate vote process once we had received and assessed further information requested from the MPWCT and Independent Election Services (IES). We have now taken the opportunity to consider this further information.

This response, in part, provides a response to issues raised in Ms Sykes' letter of 29 July 2019, but also other issues that have been raised in relation to the voting process. Ms Sykes has previously raised a number of issues on behalf of the Heritage Trust concerning the mandate vote process, namely:

- issues concerning the casting and counting of special votes;
- issues concerning the whakapapa validation committee; and
- distribution of voting packs.

Officials have considered the Heritage Trust's issues with MPWCT's mandate vote and conclude the voting process was robust and the resulting vote was consistent with the number of eligible votes cast. The reasons supporting this conclusion are set out below.

Special vote issues

The requirement to provide voter whakapapa information when casting a special vote was noted in the Crown's advertisement publicising the mandate vote, letters sent to Wai Claimants and submitters on the draft mandate strategy, Voting Packs, Special Vote Packs, the Special Vote Registration Form, MPWCT, Te Puni Kōkiri and Te Arawhiti websites, and at each mandate vote meeting.

The advertisement stated that if a member of the claimant community wished to vote but was not on MPWCT's register at the beginning of the vote period, or if they wished to vote but did not want to register with MPWCT, they would need to cast a special vote. Special Vote Packs were available at mandate voting

meetings, online, and upon request to IES. The packs included a Special Vote Registration Form that on its reverse side had a whakapapa page for voters to complete. The bottom of the page asked voters to ‘show as much of your Mōkai Pātea whakapapa as possible’ and to attach additional papers if required.

Those who attended mandate voting meetings were informed by the IES representative about the casting of a special vote, including an explanation of the purpose of the Special Vote Registration Form and the requirement to provide whakapapa information. From 4 July 2019, all emails from IES included a paragraph stating that the Registration Form needed to be completed in order to have any vote counted. MPWCT noted that this email was not to ‘clarify’ a voting process but was an additional measure to encourage voting, and was consistent with earlier messaging.

The Membership Committee verified voter whakapapa details. Those with verified whakapapa were entitled to have their vote counted, regardless of whether the voter was registered with MPWCT or not.

Ms Sykes’ letter noted the Heritage Trust’s concern that several of their members submitted whakapapa information on a form separate to the Special Vote Registration Form and they considered this was why their vote was disallowed. The Membership Committee advised they encountered no instances where whakapapa information was on a separate form to the Special Vote Registration Form. MPWCT and IES have assured us that if voters had not wished to fill in the Special Vote Registration Form and submitted their whakapapa in a different form, the Membership Committee would have still considered it.

On 20 July 2019, MPWCT and IES published the mandate vote results.

Votes in support	758 (80.13%)
Votes in opposition	183 (19.34%)
Blank votes	5
Total votes received	946
Total voting papers issued	2,370

Total special votes received	477 (68.63% return) 269 online 208 by post
Special votes counted	222 (46.54% of special votes)
Special votes disallowed	255 (53.45% of special votes)
Special votes disallowed due to whakapapa information not completed	196 (76.86%)

IES noted that the reasons why 255 special votes could not be counted included that:

- a. the voter was not on the original MPWCT database; [and]
- b. the voter had not submitted a Special Vote Registration Form;
- c. the voter’s Special Vote Registration Form had not been verified; [or]
- d. attempts at casting multiple votes.

The majority of disallowed special votes were from voters who had not completed the Special Vote Registration Form whakapapa section or otherwise provided evidence of their whakapapa. Conversely, 222 special voters had provided this information and had their votes counted.

IES concluded that the total number of special votes issued was considered high, in relation to the number of voting documents issued. Under these circumstances, IES considered that the 196 disallowed votes, because the voter had not correctly completed their application for verification, was not unusual.

Whakapapa validation committee issues

On 12 July 2019, the Heritage Trust had asked if they could have a representative on the Membership Committee to ensure the integrity of potential Ngāti Hinemanu and Ngāti Paki special voters' whakapapa verification. The MPWCT declined noting their confidence in the expertise of the Membership Committee as it consisted of adult members with Mōkai Pātea whakapapa expertise and knowledge (inclusive of Ngāti Hinemanu and Ngāti Paki whakapapa knowledge).

We consider the approach taken by MPWCT to include at least one representative from each of the four Mōkai Pātea Iwi Rūnanga on the Membership Committee was appropriate. Consequently, MPWCT has assured the Crown that anyone with a valid whakapapa had their vote counted. It is not for the Crown to determine who is on the Membership Committee.

Ms Sykes raised the issue surrounding the 64 applications for verification and the 44 votes that were disallowed because the Membership Committee had not approved the application. On 26 August 2019, MPWCT responded to this issue, noting that '20 persons completed registration but did not vote'.

Distribution of voting packs

During the voting period the Heritage Trust requested that IES utilise their registration database to send Special Vote Packs to their eligible members. The Crown accepts IES' explanation that they declined the request because their contractual agreement was with the MPWCT, the voting period had already begun, and the issuing of separate Special Vote Packs would have been highly irregular and could create a negative perception around the integrity of the electoral process. Any new registrations or databases would have needed to come through the MPWCT to allow the cross checking of databases to avoid double ups and attempts at plural voting. We consider Ngāti Hinemamu me Ngāti Paki Heritage Trust members were not disadvantaged in the mandate vote due to the publicity around the vote and ability to cast a special vote.

Should you have further comment on these matters, please feel free to contact Verity.Smith@tearawhiti.govt.nz or by phone at 027 442 0045.

Nā māua noa, nā



Verity Smith
Negotiation and Settlement Manager, Te Kāhui
Whakatau, Te Arawhiti



Erin Keenan
Manager, Crown-Iwi, Hapū, Whānau Māori
Relations, Te Puni Kōkiri

Cc: Lavinia Jacobsen, Programme Manager MPWCT, laviniajacobsen@gmail.com; Richard Steedman, Strategic Advisor MPWCT, richard.steedman@xtra.co.nz; Leo Watson, Counsel MPWCT, leo@leowatson.co.nz,