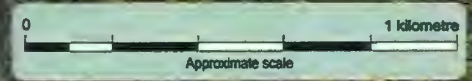
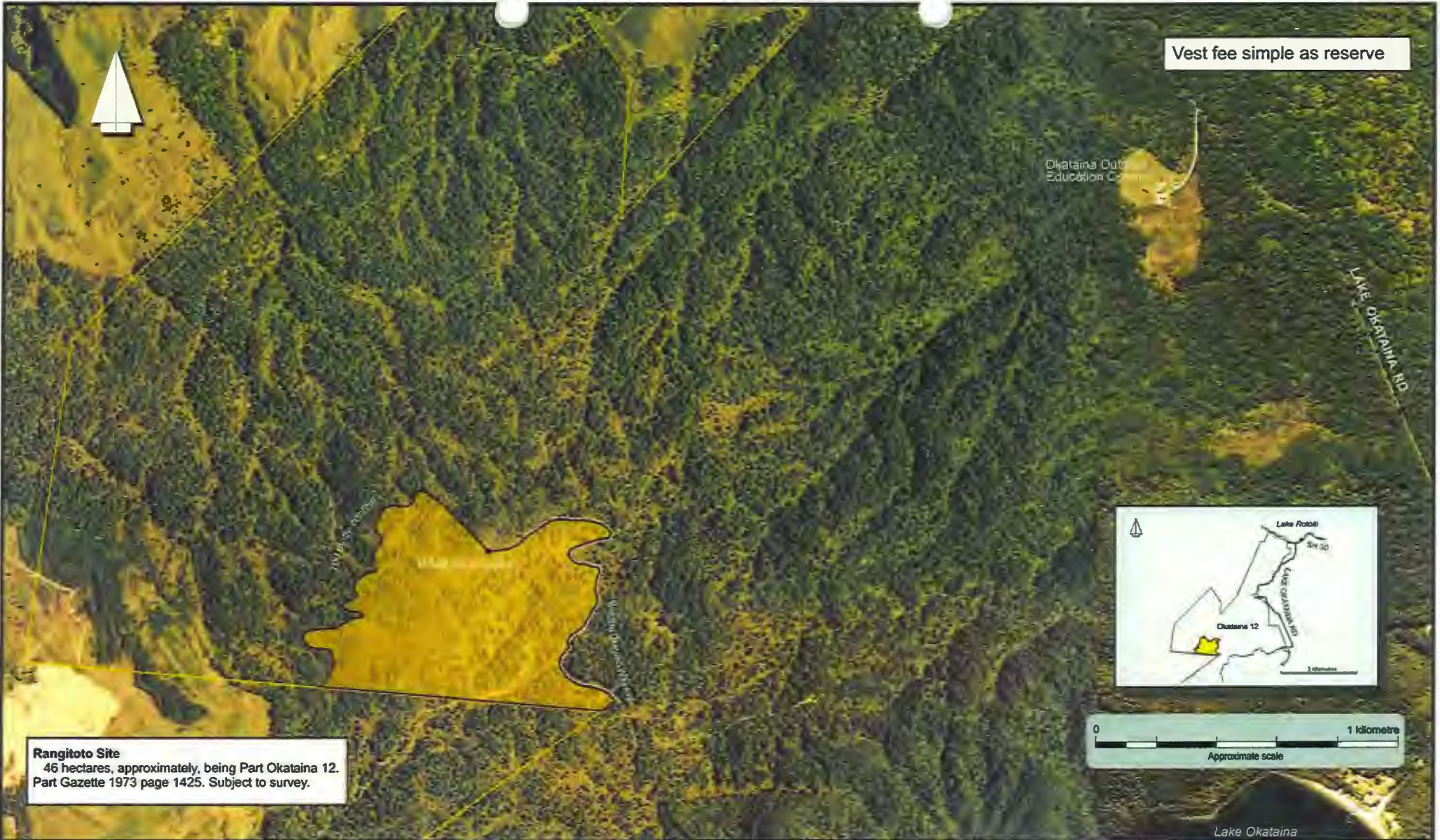


SCHEDULE 7

SO PLANS

(Clause 16.5.3)

Vest fee simple as reserve



Rangitoto Site
46 hectares, approximately, being Part Okataina 12.
Part Gazette 1973 page 1425. Subject to survey.

South Auckland Land District
Territorial authority : Rotorua District
Boundaries are indicative only.
Aerial photography BE37 (2003/04)



ACE078A

Rangitoto Site

**Areas referred to in the Deed of Settlement between
the Affiliate Te Arawa Iwi/Hapu and the Crown**

Approved as to boundaries:

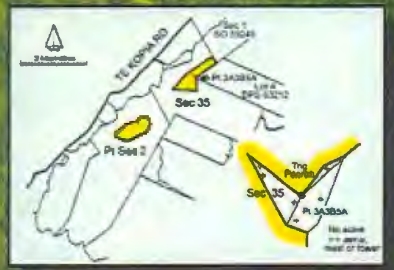
[Signature] 8/8/06
for and on behalf of the Affiliate Te Arawa Iwi/Hapu

[Signature] 8/8/2006
for and on behalf of the Crown

SO 364659



Vest fee simple as reserve



Sites on Paeroa Range
 50 hectares, approximately, being Part Section 35 Block V Paeroa Survey District. Part Gazette 1989 page 3398. Subject to survey.
 44 hectares, approximately, being Part Section 2 Block VIII Ngongotaha Survey District. Part Gazette 1911 page 1577. Subject to survey.



South Auckland Land District
 Territorial authority : Rotorua District
 Boundaries are indicative only.
 Aerial photography Rotorua DC (2001)



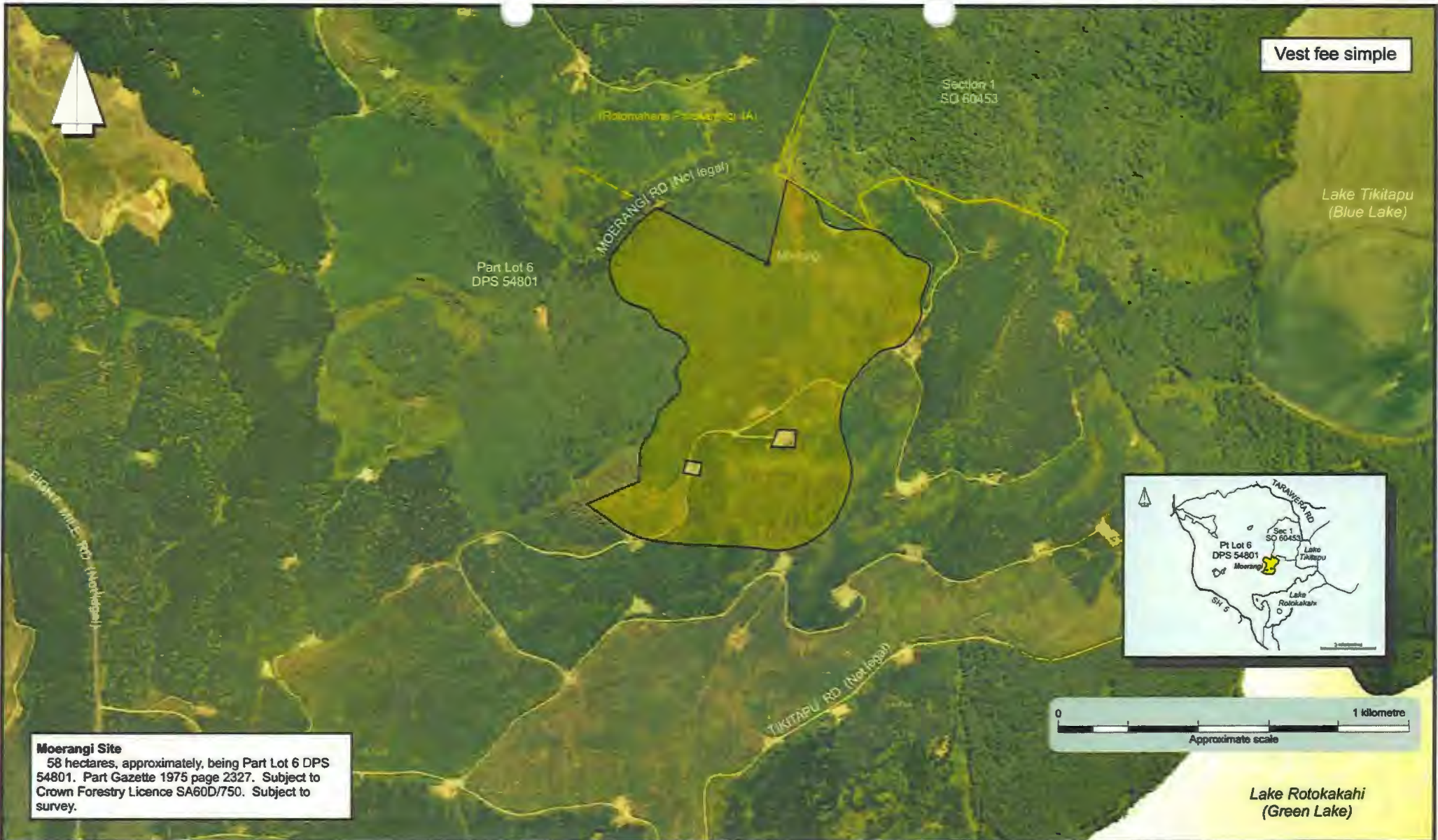
A602785

Sites on Paeroa Range

Areas referred to in the Deed of Settlement between the Affiliate Te Arawa Iwi/Hapu and the Crown

Approved as to boundaries:
[Signature] 22.1.06
 for and on behalf of the Affiliate Te Arawa Iwi/Hapu
[Signature] 8.8.2006
 for and on behalf of the Crown

SO 364661



Vest fee simple

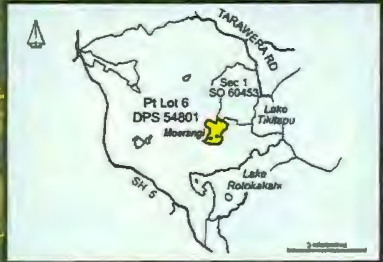
Section 1
SO 60453

(Rotokakahi Forest Licence (A))

MOERANGI RD (Not legal)

Part Lot 6
DPS 54801

Lake Tikitapu
(Blue Lake)



Moerangi Site
58 hectares, approximately, being Part Lot 6 DPS 54801. Part Gazette 1975 page 2327. Subject to Crown Forestry Licence SA60D/750. Subject to survey.

Lake Rotokakahi
(Green Lake)



South Auckland Land District
Territorial authority : Rotorua District
Boundaries are indicative only.
Aerial photography Rotorua DC (2001)



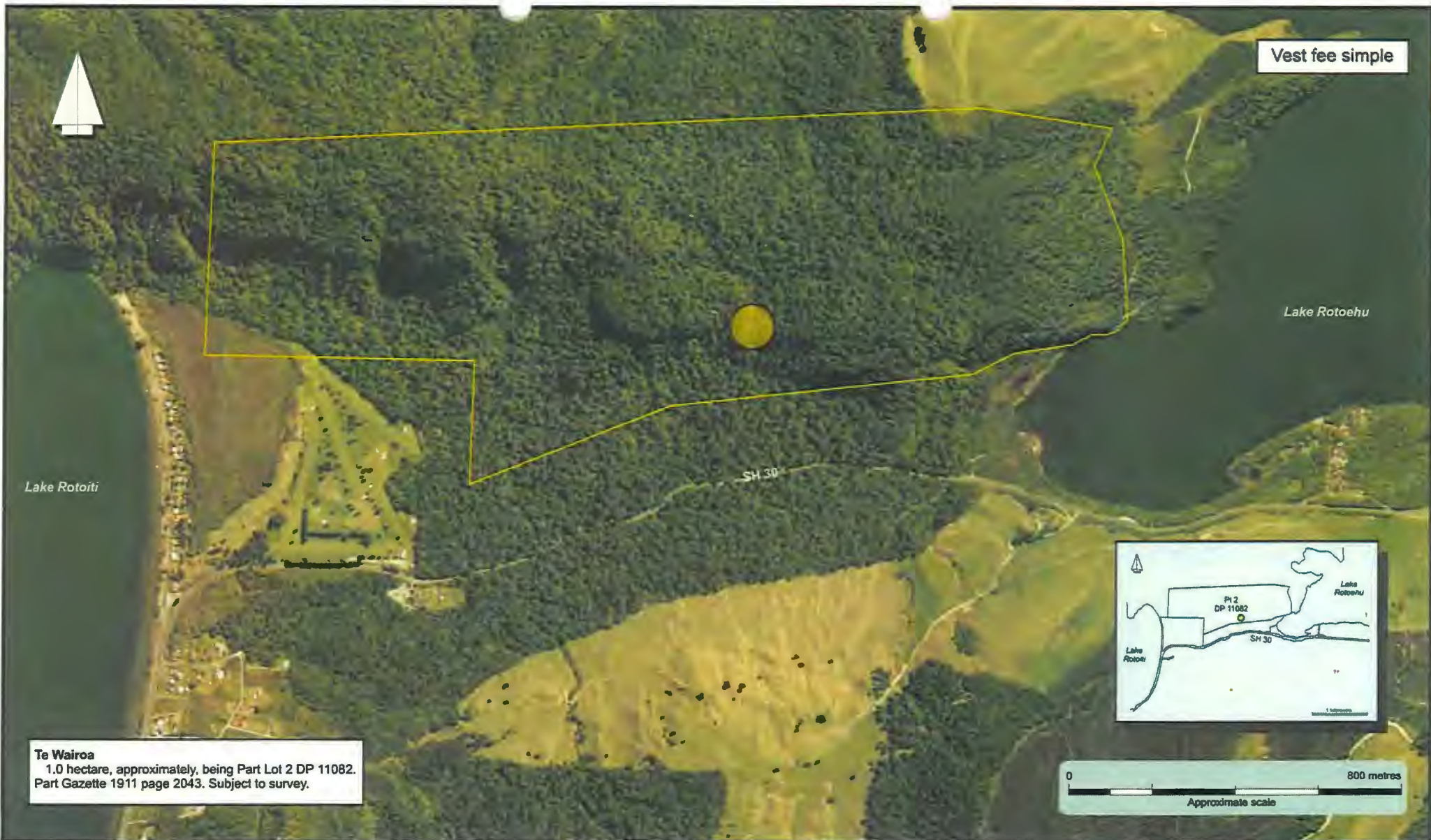
AS02785

Moerangi Site

Areas referred to in the Deed of Settlement between the Affiliate Te Arawa Iwi/Hapu and the Crown

Approved as to boundaries:
[Signature] 8.12.06
for and on behalf of the Affiliate Te Arawa Iwi/Hapu
[Signature] 8.12.06
for and on behalf of the Crown

SO 364662



Te Wairoa
 1.0 hectare, approximately, being Part Lot 2 DP 11082.
 Part Gazette 1911 page 2043. Subject to survey.

Te Wairoa

**Areas referred to in the Deed of Settlement between
 the Affiliate Te Arawa Iwi/Hapu and the Crown**

Approved as to boundaries:
[Signature]
 for and on behalf of the Affiliate Te Arawa Iwi/Hapu
[Signature] 8/8/06
 for and on behalf of the Crown

SO 364664

South Auckland Land District
 Territorial authority : Rotorua District
 Boundaries are indicative only.
 Aerial photography V15 (2001/02)

SKM
BRIDLAND KIMBURY MILES

Vest fee simple

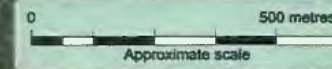


LAKE OKATAINA RD

Te Koutu Pa

Lake Okataina

Te Koutu Pa
3 hectares, approximately, being Part Okataina 3.
Part Gazette 1931 page 1685. Subject to survey.



South Auckland Land District
Territorial authority : Rotorua District
Boundaries are indicative only.
Aerial photography V16 (2001/02)



AR02785

Te Koutu Pa

**Areas referred to in the Deed of Settlement between
the Affiliate Te Arawa Iwi/Hapu and the Crown**

Approved as to boundaries:

[Signature] E.B.P. 06
for and on behalf of the Affiliate Te Arawa Iwi/Hapu

[Signature] E.B.P. 006
for and on behalf of the Crown

SO 364666



Vest fee simple

Lake Rotongata
(Mirror Lake)

Lake Rotoatua

Okataina Outdoor
Education Centre

LAKE OKATAINA RD

Okataina Outdoor Education Centre Site
 10 hectares, approximately, being Part Waione C
 and Part Okataina 12. Part Gazette 1931 page 1685
 and Part Gazette 1973 page 1425. Subject to the
 existing unregistered lease over a 1.0 hectare area to
 the Lake Okataina Education and Recreation Trust.
 Subject to survey.



South Auckland Land District
 Territorial authority : Rotorua District
 Boundaries are indicative only.
 Aerial photography BE37 (2003/04)
 and V1S (2001/02)



48022785

Okataina Outdoor Education Centre Site

**Areas referred to in the Deed of Settlement between
 the Affiliate Te Arawa Iwi/Hapu and the Crown**

Approved as to boundaries:
[Signature] 8/12/06
 for and on behalf of the Affiliate Te Arawa Iwi/Hapu
[Signature] 8/8/2006
 for and on behalf of the Crown

SO 364667

Vest fee simple



LAKE OKATAINA RD

Lake Rotongata
(Mirror Lake)

Lake Rotoatua

Pt Waione C



Beds of Lake Rotongata (Mirror Lake) and Lake Rotoatua
8.2 hectares, approximately, being Parts Waione C. Part
Gazette 1931 page 1685. Subject to survey.



South Auckland Land District
Territorial authority : Rotorua District
Boundaries are indicative only.
Aerial photography V15 (2001/02)



AEO2785

Beds of Lake Rotongata (Mirror Lake) and Lake Rotoatua

**Areas referred to in the Deed of Settlement between
the Affiliate Te Arawa Iwi/Hapu and the Crown**

Approved as to boundaries:

[Signature] 8/8/06
for and on behalf of the Affiliate Te Arawa Iwi/Hapu

[Signature] 8/8/2006
for and on behalf of the Crown

SO 364669

Vest fee simple



Kakapiko
2.75 hectares, approximately, being Part Lot 6 DPS 54801. Part Gazette 1975 page 2327. Subject to Crown Forestry Licence SA60D/750. Subject to survey.



South Auckland Land District
Territorial authority: Rotorua District
Boundaries are indicative only.
Aerial photography Rotorua DC 2001



Kakapiko

Areas referred to in the Deed of Settlement between the Affiliate Te Arawa Iwi/Hapu and the Crown

Approved as to boundaries:
[Signature] 8/8/2006
for and on behalf of the Affiliate Te Arawa Iwi/Hapu
[Signature] 8/8/2006
for and on behalf of the Crown

SO 364704

4/10/2006



Otari Pa
 1.0136 hectares, more or less, being Part Sections 1 and 4 Block X Waihi South Survey District. Part Gazette 1937 page 1711 and 1938 page 1601.



South Auckland Land District
 Territorial authority :
 Western Bay of Plenty District
 Boundaries are indicative only.
 Aerial photography V15 (2001/02)



AF02785

Otari Pa

Areas referred to in the Deed of Settlement between the Affiliate Te Arawa Iwi/Hapu and the Crown

Approved as to boundaries:

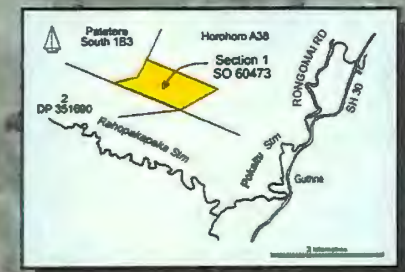
[Signature] 8/8/06
 for and on behalf of the Affiliate Te Arawa Iwi/Hapu
[Signature] 8/8/2006
 for and on behalf of the Crown

SO 364705

Vest fee simple



Site on Horohoro Bluff
75.2470 hectares, more or less, being Section 1
SO 60473. Part Gazette 1941 page 2713.



South Auckland Land District
Territorial authority : Rotorua District
Boundaries are indicative only.
Aerial photography U16 (1995/96)



4802785

Site on Horohoro Bluff

Areas referred to in the Deed of Settlement between the Affiliate Te Arawa Iwi/Hapu and the Crown

Approved as to boundaries:

[Signature] 8.1.06
for and on behalf of the Affiliate Te Arawa Iwi/Hapu
[Signature] 8.1.06
for and on behalf of the Crown

SO 364706

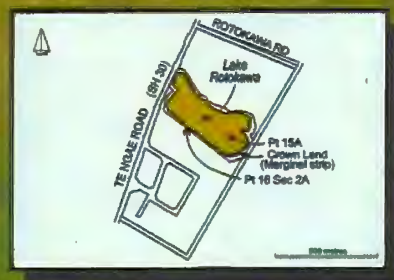
Vest fee simple



Lake Rotokawa

A

B



Lake Rotokawa Site
7.5 hectares, approximately, being Lake Rotokawa (Part Whakapoungakau 15A and Part Whakapoungakau 16 Sec 2A). Part Gazette 1902 page 1778. Subject to survey.



South Auckland Land District
Territorial authority : Rotorua District
Boundaries are indicative only.
Aerial photography BE37 (2003/04)



AE02786

Lake Rotokawa Site

Areas referred to in the Deed of Settlement between the Affiliate Te Arawa Iwi/Hapu and the Crown

Approved as to boundaries:
[Signature] 8, 8, 06
for and on behalf of the Affiliate Te Arawa Iwi/Hapu
[Signature] 8, 8, 06
for and on behalf of the Crown

SO 364707

Vest fee simple



Ngarehu Point

Lake Rotoiti

Motuoha Point

Pateko Island



Pateko Island
2023 square metres, more or less, being Pateko Island. SO 21321/3. Part Gazette 1921 page 887.



South Auckland Land District
Territorial authority: Rotorua District
Boundaries are indicative only.
Aerial photography BE37 (2003/04)



A802765

Pateko Island

Areas referred to in the Deed of Settlement between the Affiliate Te Arawa Iwi/Hapu and the Crown

Approved as to boundaries:

[Signature] 8.16.196
for and on behalf of the Affiliate Te Arawa Iwi/Hapu
[Signature] 8.18.2006
for and on behalf of the Crown

SO 364709

Vest fee simple



Lake Okataina



Okataina Lodge Site
1.5260 hectares, more or less, being Section 7 Block XVI Rotoiti Survey District. SO 47823. Part Gazette 1931 page 1685. Subject to lease SA23A/1000.

South Auckland Land District
Territorial authority : Rotorua District
Boundaries are indicative only.
Aerial photography Rotorua DC (2001)



AE02785

Okataina Lodge Site

Areas referred to in the Deed of Settlement between the Affiliate Te Arawa Iwi/Hapu and the Crown

Approved as to boundaries:

[Signature] 8.8.06
for and on behalf of the Affiliate Te Arawa Iwi/Hapu

[Signature] 8.8.2006
for and on behalf of the Crown

SO 364710

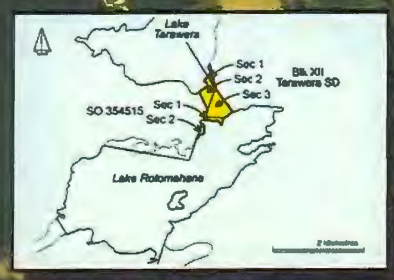
Vest fee simple (50% share)



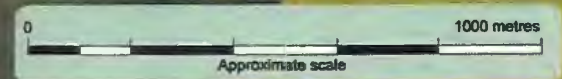
Lake Tarawera



Contains data sourced from Land Information New Zealand. Land Information New Zealand gives no warranty in relation to the data including accuracy, reliability, completeness or suitability and accepts no liability including, without limitation, liability in negligence for any loss, damage or costs relating to any use of the data. Crown Copyright Reserved



Lake Rotomahana



Te Arika Site
44.9432 hectares, more or less, being Sections 1, 2 and 3 Block XII Tarawera Survey District, and Sections 1 and 2 SO 354515. Part Gazette 1908 pages 612 and 2086.

Te Arika Site

South Auckland Land District
Territorial authority : Rotorua District
Boundaries are indicative only.
Aerial photography V16 (2001/02)



AE02786

Areas referred to in the Deed of Settlement between the Affiliate Te Arawa Iwi/Hapu and the Crown

Approved as to boundaries:
[Signature] 21.6.10
 for and on behalf of the Affiliate Te Arawa Iwi/Hapu
[Signature] 8.8.2006
 for and on behalf of the Crown

SO 364711



Vest fee simple as reserve

Wai-o-Tapu Site
 123.8259 hectares approximately, being Part Sections 5, 6, 8 and 15 and Sections 7, 9, 12 and 18 Block VII, Paeroa Survey District. Parts Gazette 1908 page 893, 1934 page 4289 and 1951 page 829. Subject to the unregistered lease to Waitapu Thermal Tourist Park Limited. Subject to survey.



0 1000 metres
 Approximate scale



South Auckland Land District
 Territorial authority: Rotorua District
 Boundaries are indicative only.
 Aerial photography Rotorua DC (2001)



AE02785

Wai-o-Tapu Site

Areas referred to in the Deed of Settlement between the Affiliate Te Arawa Iwi/Hapu and the Crown

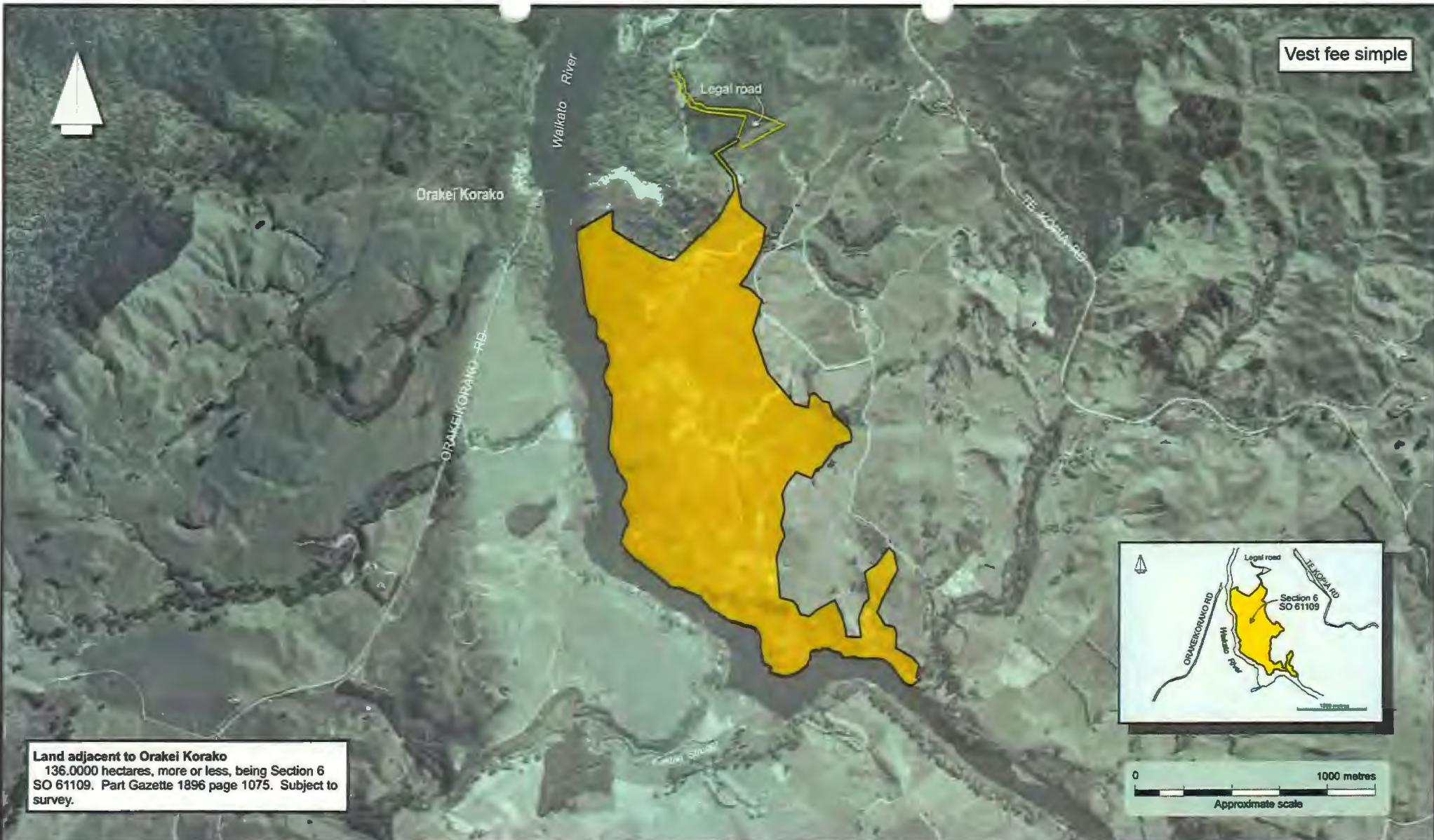
Approved as to boundaries:

[Signature] 8.9.06
 for and on behalf of the Affiliate Te Arawa Iwi/Hapu

[Signature] 8.18.2006
 for and on behalf of the Crown

SO 364712

Vest fee simple



Land adjacent to Orakei Korako
136.0000 hectares, more or less, being Section 6
SO 61109. Part Gazette 1896 page 1075. Subject to
survey.



South Auckland Land District
Territorial authority : Rotorua District
Boundaries are indicative only.
Aerial photography U17 (1996/97)



A602765

Land adjacent to Orakei Korako

Areas referred to in the Deed of Settlement between the Affiliate Te Arawa Iwi/Hapu and the Crown

Approved as to boundaries:

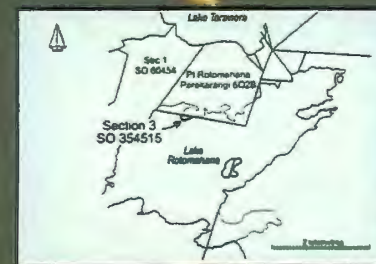
[Signature] 9.8.06
for and on behalf of the Affiliate Te Arawa Iwi/Hapu
[Signature] 8.8.2006
for and on behalf of the Crown

SO 364713

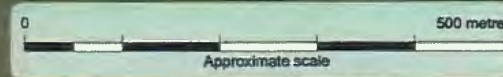
Vest fee simple



Lake Rotomahana



Land adjacent to Lake Rotomahana
1.5210 hectares, more or less, being Section 3 SO
354515. Part Gazette 1896 page 1075.



South Auckland Land District
Territorial authority : Rotorua District
Boundaries are indicative only.
Aerial photography V16 (2001/02)



A802785

Land adjacent to Lake Rotomahana

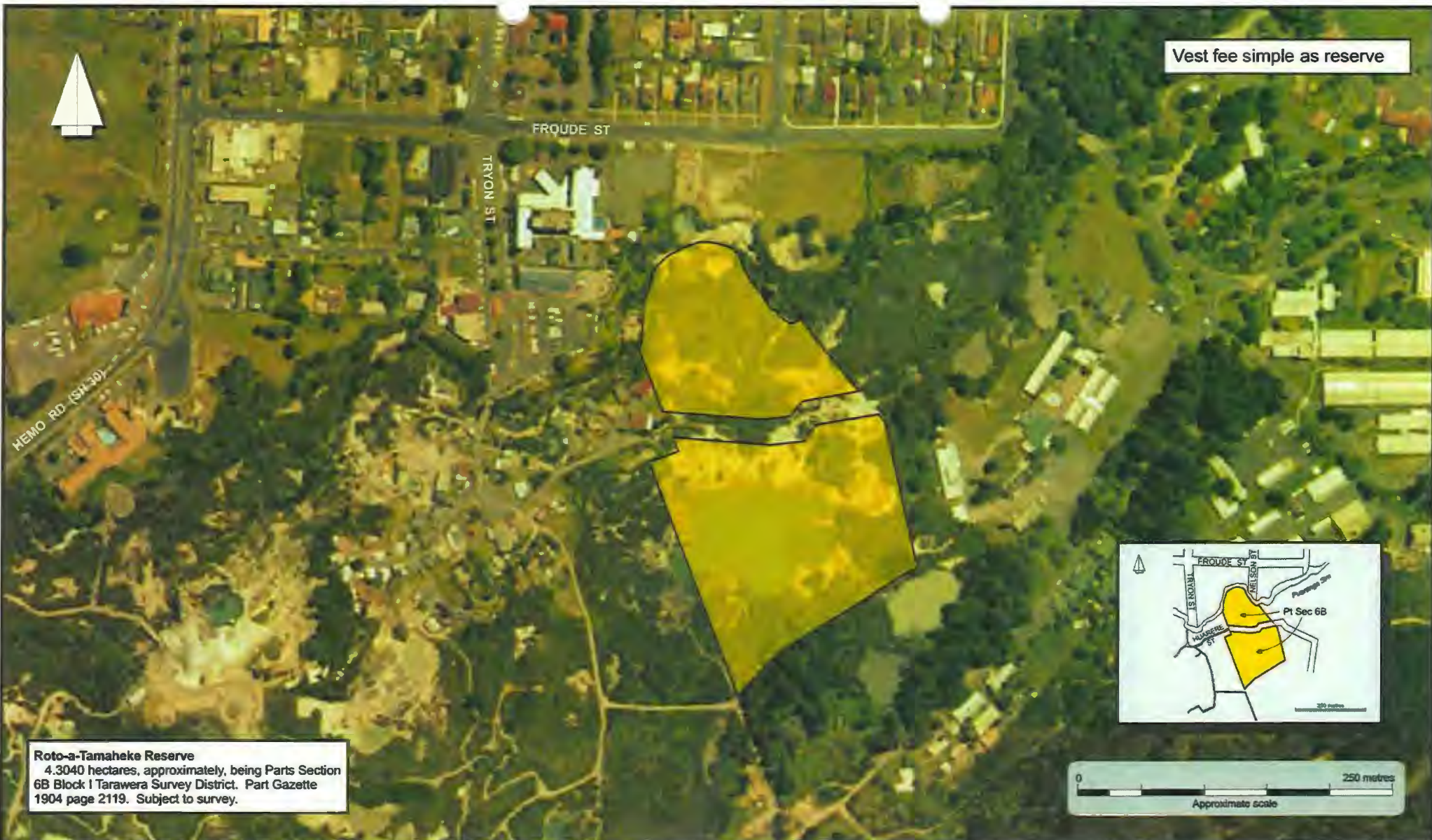
Areas referred to in the Deed of Settlement between the Affiliate Te Arawa Iwi/Hapu and the Crown

Approved as to boundaries:

[Signature] 8.1.2006
for and on behalf of the Affiliate Te Arawa Iwi/Hapu
[Signature] 8.1.2006
for and on behalf of the Crown

SO 364714

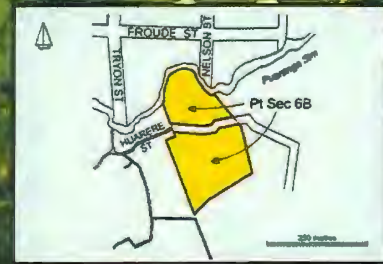
Vest fee simple as reserve



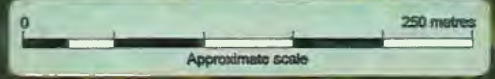
HEMO RD (SH 30)

FROUDE ST

TRYON ST



Roto-a-Tamaheke Reserve
4.3040 hectares, approximately, being Parts Section 6B Block I Tarawera Survey District. Part Gazette 1904 page 2119. Subject to survey.



South Auckland Land District
Territorial authority : Rotorua District
Boundaries are indicative only.
Aerial photography Rotorua DC (2001)



4602796

Roto-a-Tamaheke Reserve

Areas referred to in the Deed of Settlement between the Affiliate Te Arawa Iwi/Hapu and the Crown

Approved as to boundaries:

..... *[Signature]* 8.18.06
for and on behalf of the Affiliate Te Arawa Iwi/Hapu

..... *[Signature]* 8.18.2006
for and on behalf of the Crown

SO 364715



Whakarewarewa Thermal Springs Reserve
 45 hectares, approximately, being Part Section 7
 Block I Tarawera Survey District. Part Gazette 1904
 page 2119. Subject to lease to New Zealand Māori
 Arts and Crafts Institute. Subject to survey.



South Auckland Land District
 Territorial authority : Rotorua District
 Boundaries are indicative only.
 Aerial photography Rotorua DC (2001)



Whakarewarewa Thermal Springs Reserve

**Areas referred to in the Deed of Settlement between
 the Affiliate Te Arawa Iwi/Hapu and the Crown**

Approved as to boundaries:
[Signature] 8/16/06
 for and on behalf of the Affiliate Te Arawa Iwi/Hapu
[Signature] 8/8/2006
 for and on behalf of the Crown

SO 364716

Whenua Rahui (for future vesting as reserve)



Matawhaura (part of the Lake Rotoiti Scenic Reserve)
32.5266 hectares, approximately, being Part Rotoiti 6 & 7A. Part Gazette 1921 page 887. Subject to survey. As marked A hereon.



South Auckland Land District
Territorial authority : Rotorua District
Boundaries are indicative only.
Aerial photography V15 (2001/02)



A803785

Matawhaura (part of the Lake Rotoiti Scenic Reserve)

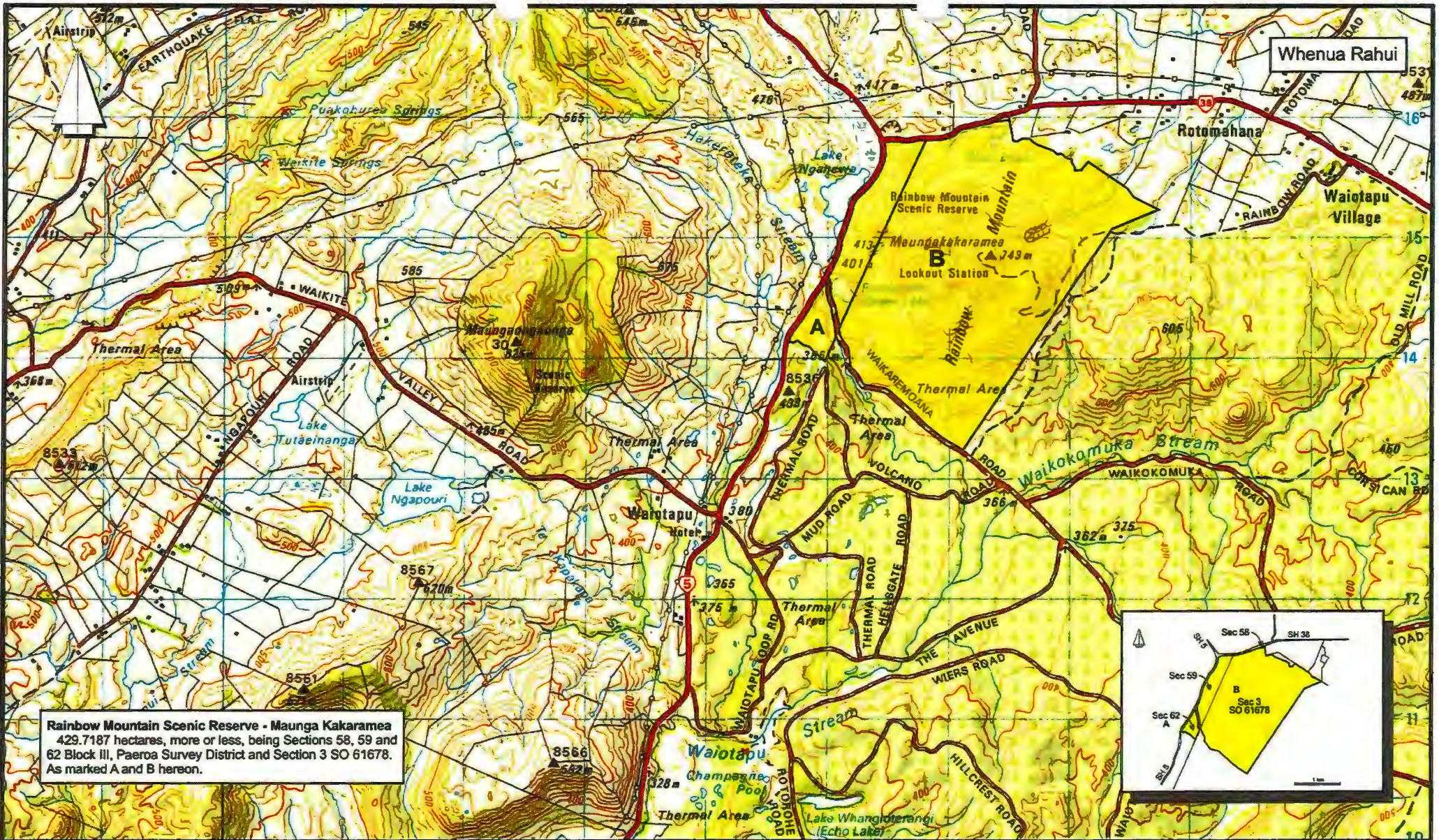
Areas referred to in the Deed of Settlement between
the Affiliate Te Arawa Iwi/Hapu and the Crown

Approved as to boundaries:

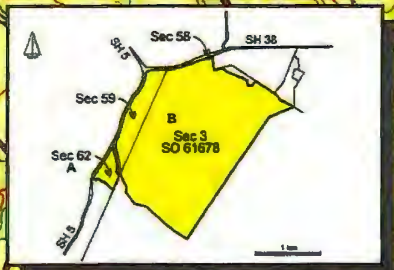

[Signature] 8/8/2006
for and on behalf of the Affiliate Te Arawa Iwi/Hapu

[Signature] 8/8/2006
for and on behalf of the Crown


SO 364717



Rainbow Mountain Scenic Reserve - Maunga Kakaramea
 429.7187 hectares, more or less, being Sections 58, 59 and 62 Block III, Paeroa Survey District and Section 3 SO 61678. As marked A and B hereon.

South Auckland Land District
 Territorial authority: Rotorua District
 Boundaries are indicative only.
 Grid lines are at 1000 metres.

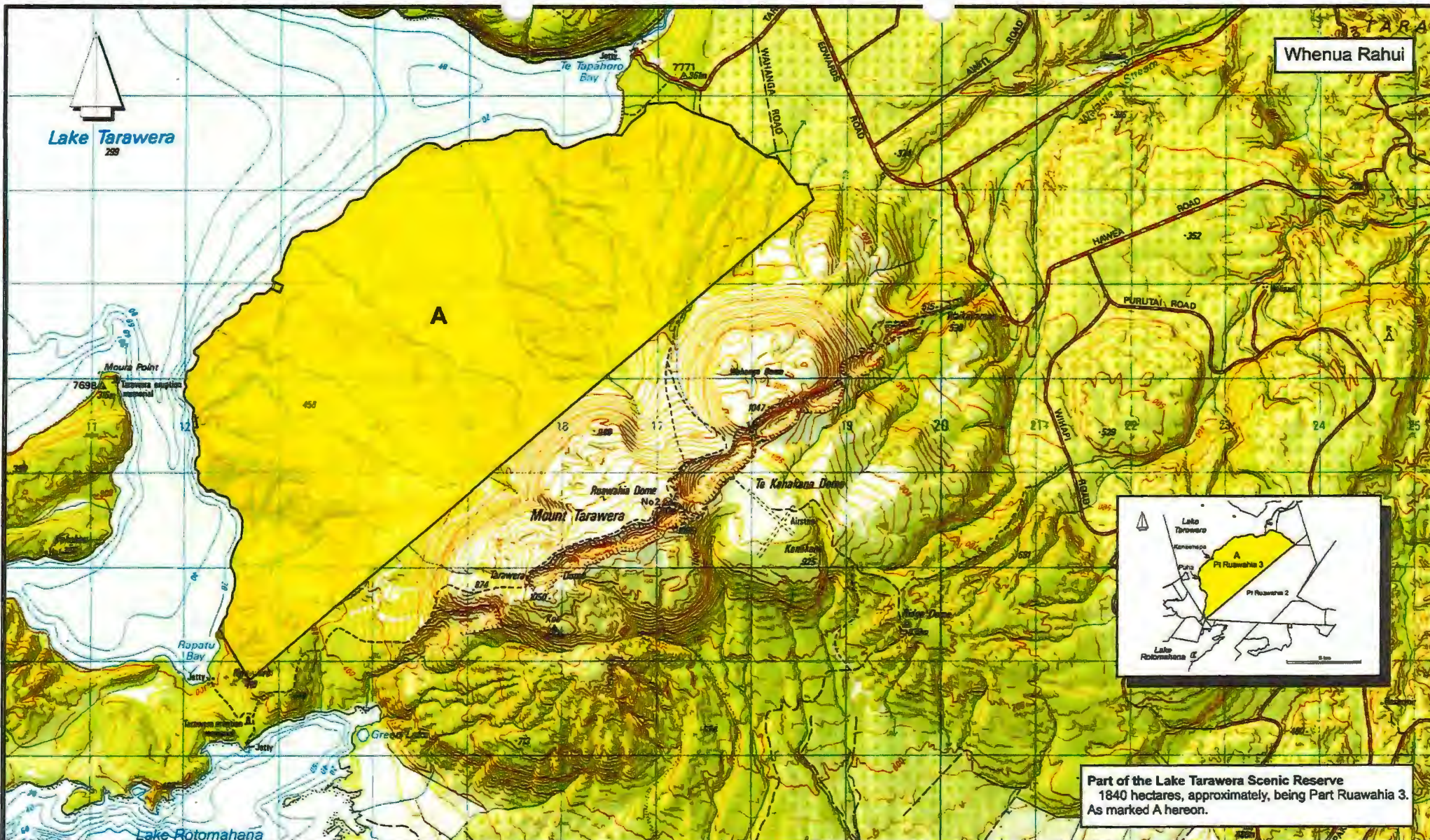


AEQ2785

Rainbow Mountain Scenic Reserve - Maunga Kakaramea

**Areas referred to in the Deed of Settlement between
 the Affiliate Te Arawa Iwi/Hapu and the Crown**

Approved as to boundaries:
[Signature] 9.6.04
 for and on behalf of the Affiliate Te Arawa Iwi/Hapu
[Signature] 8.18.2006
 for and on behalf of the Crown
SO 364718



Whenua Rahui

Part of the Lake Tarawera Scenic Reserve
1840 hectares, approximately, being Part Ruawahia 3.
As marked A hereon.



South Auckland Land District
Territorial authority: Rotorua District
Boundaries are indicative only.
Grid lines are at 1000 metres.



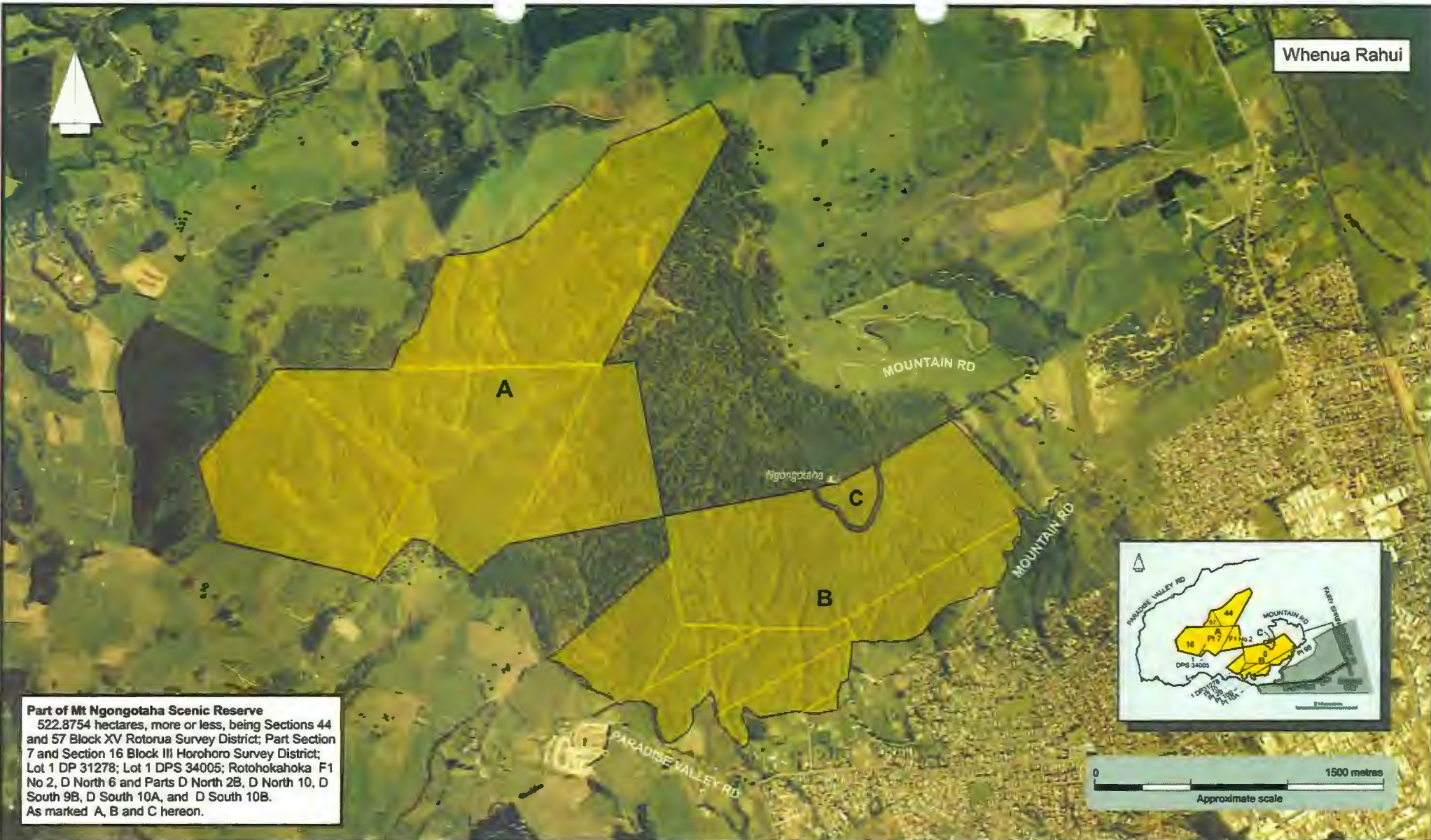
AER2785

Part of the Lake Tarawera Scenic Reserve

Areas referred to in the Deed of Settlement between
the Affiliate Te Arawa Iwi/Hapu and the Crown

Approved as to boundaries:
..... *[Signature]* 8/12/06
for and on behalf of the Affiliate Te Arawa Iwi/Hapu
..... *[Signature]* 8/12/06
for and on behalf of the Crown

SO 364719



Part of Mt Ngongotaha Scenic Reserve
522.8754 heclares, more or less, being Sections 44 and 57 Block XV Rotorua Survey District; Part Section 7 and Section 16 Block III Horohoro Survey District; Lot 1 DP 31278; Lot 1 DPS 34005; Rotohokahoka F1 No 2, D North 6 and Parts D North 2B, D North 10, D South 9B, D South 10A, and D South 10B. As marked A, B and C hereon.



South Auckland Land District
Territorial authority : Rotorua District
Boundaries are indicative only.
Aerial photography BE37 (2003/04)



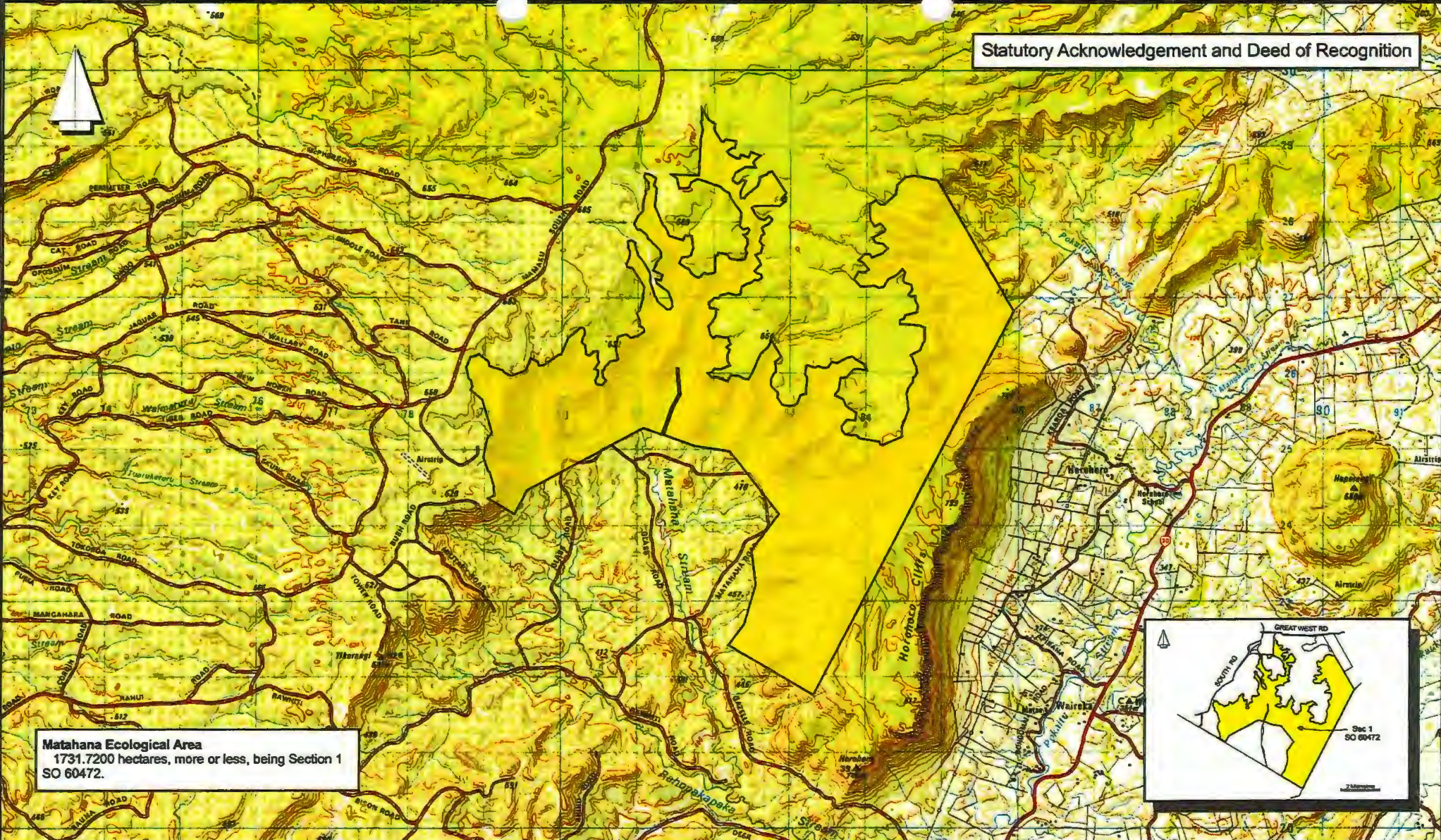
AB07715

Part of Mt Ngongotaha Scenic Reserve

Areas referred to in the Deed of Settlement between the Affiliate Te Arawa Iwi/Hapu and the Crown

Approved as to boundaries:
[Signature] 14.11.06
for and on behalf of the Affiliate Te Arawa Iwi/Hapu
[Signature] 10.11.06
for and on behalf of the Crown

SO 364720



Matahana Ecological Area
 1731.7200 hectares, more or less, being Section 1
 SO 60472.



South Auckland Land District
 Territorial authority :
 South Waikato District
 Boundaries are indicative only.
 Grid lines are at 1000 metres



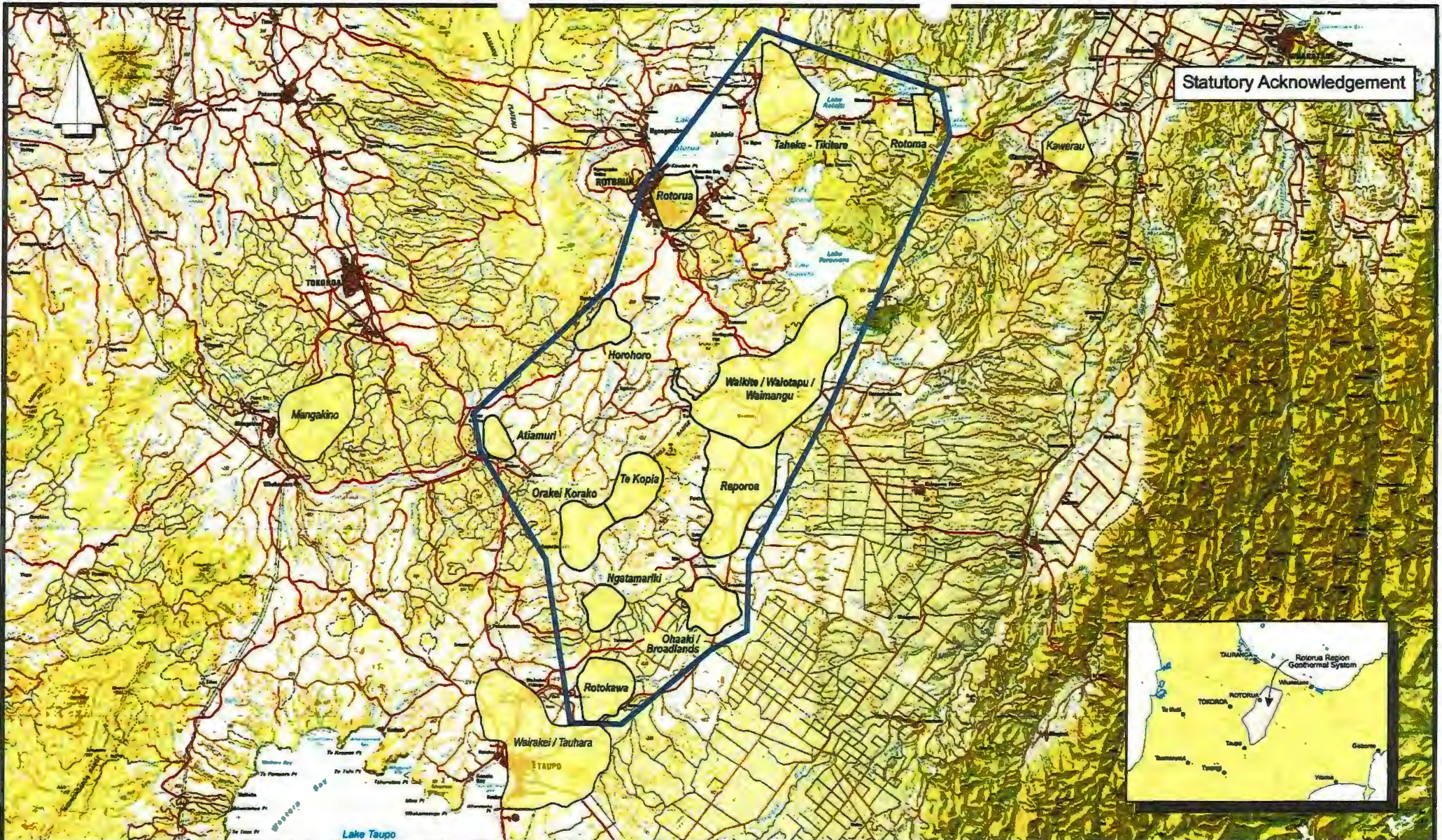
AE02785

Matahana Ecological Area

**Areas referred to in the Deed of Settlement between
 the Affiliate Te Arawa Iwi/Hapu and the Crown**

Approved as to boundaries:
 *[Signature]* 8.12.2006
 for and on behalf of the Affiliate Te Arawa Iwi/Hapu
 *[Signature]* 8.12.2006
 for and on behalf of the Crown

SO 364721



Statutory Acknowledgement



South Auckland Land District
Boundaries are indicative only.



AE02785

Rotorua Region Geothermal System

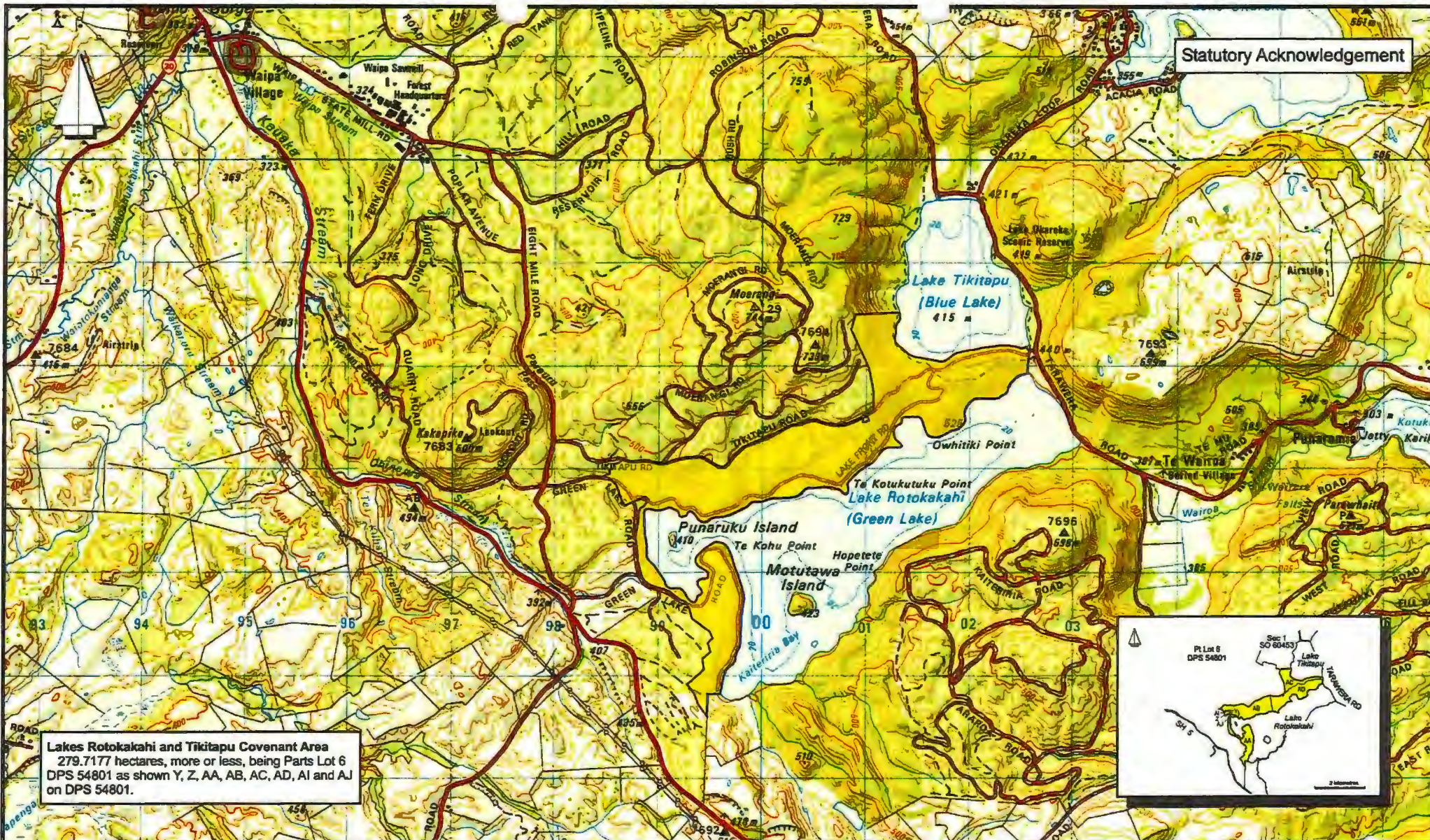
Areas referred to in the Deed of Settlement between
the Affiliate Te Arawa Iwi/Hapu and the Crown

Approved as to boundaries:

[Signature] 2/8/06
for and on behalf of the Affiliate Te Arawa Iwi/Hapu

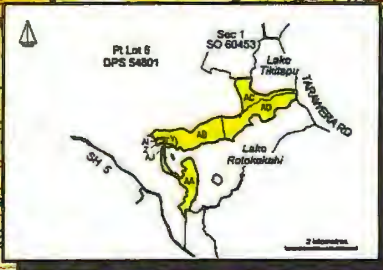
[Signature] 8/3/2006
for and on behalf of the Crown

SO 364723



Statutory Acknowledgement

Lakes Rotokakahi and Tikitapu Covenant Area
 279.7177 hectares, more or less, being Parts Lot 6
 DPS 54801 as shown Y, Z, AA, AB, AC, AD, AI and AJ
 on DPS 54801.




South Auckland Land District
 Territorial authority : Rotorua District
 Boundaries are indicative only.
 Grid lines are at 1000 metres.



AE02785

Lakes Rotokakahi and Tikitapu Covenant Area

Areas referred to in the Deed of Settlement between
 the Affiliate Te Arawa Iwi/Hapu and the Crown

Approved as to boundaries:
[Signature] 8.1.06
 for and on behalf of the Affiliate Te Arawa Iwi/Hapu
[Signature] 8.1.2006
 for and on behalf of the Crown

SO 364724



Recreation Reserve at Hannahs Bay (including Otairua Swamp)
 22.9970 hectares, more or less, being Section 1 SO 59465. As marked A hereon.

Esplanade Land
 2 hectares, approximately, being Part Lot 1 DPS 49938, subject to survey. As marked B hereon.

Keramuramu Baths Land
 Part Lot 1 DPS 49938. Subject to survey. As marked C hereon.

 South Auckland Land District
 Territorial authority : Rotorua District
 Boundaries are Indicative only.
 Aerial photography Rotorua DC (2001)

 SKM

Recreation Reserve at Hannahs Bay (including Otairua Swamp) and Esplanade Land and Keramuramu Baths Land

Areas referred to in the Deed of Settlement between the Affiliate Te Arawa Iwi/Hapu and the Crown

Approved as to boundaries:
 *[Signature]* 4.8.06
 for and on behalf of the Affiliate Te Arawa Iwi/Hapu

..... *[Signature]* 8.8.2006
 for and on behalf of the Crown

SO 364726

Special classification - Rotorua District Council reserve



Lake Rotorua

Waiteti Stream

NIHOA ST

REEVE ST

NIHOA ST

TAUU ST



Recreation Reserve adjacent to Waiteti Stream (including Te Kahupapa and Te Hinahina) 1.5089 hectares, more or less, being Lot 102 DP 23433 and Lot 51 DPS 246. As marked A hereon.



South Auckland Land District
Territorial authority : Rotorua District
Boundaries are indicative only.
Aerial photography Rotorua DC (2001)



A602766

Recreation Reserve adjacent to Waiteti Stream (including Te Kahupapa and Te Hinahina)

Areas referred to in the Deed of Settlement between the Affiliate Te Arawa Iwi/Hapu and the Crown

Approved as to boundaries:

[Signature] 8/8/06
for and on behalf of the Affiliate Te Arawa Iwi/Hapu

[Signature] 8/8/2006
for and on behalf of the Crown

SO 364727

Special classification - Rotorua District Council reserve



Lake Okareka

Lake Okareka

Recreation Reserve adjacent to Lake Okareka
(known as Boyes Beach)
3.7590 hectares, more or less being Lot 2 DPS 34146.
As marked A hereon.



South Auckland Land District
Territorial authority : Rotorua District
Boundaries are indicative only.
Aerial photography Rotorua DC (2001)



Recreation Reserve adjacent to Lake Okareka (known as Boyes Beach)

Areas referred to in the Deed of Settlement between the Affiliate Te Arawa Iwi/Hapu and the Crown

Approved as to boundaries:

[Signature] 8/10/06
for and on behalf of the Affiliate Te Arawa Iwi/Hapu

[Signature] 8/10/2006
for and on behalf of the Crown

SO 364729



South Auckland Land District
 Boundaries are indicative only.
 Grid lines are at 1000 metres.



AE02785

Part of the Kaituna River

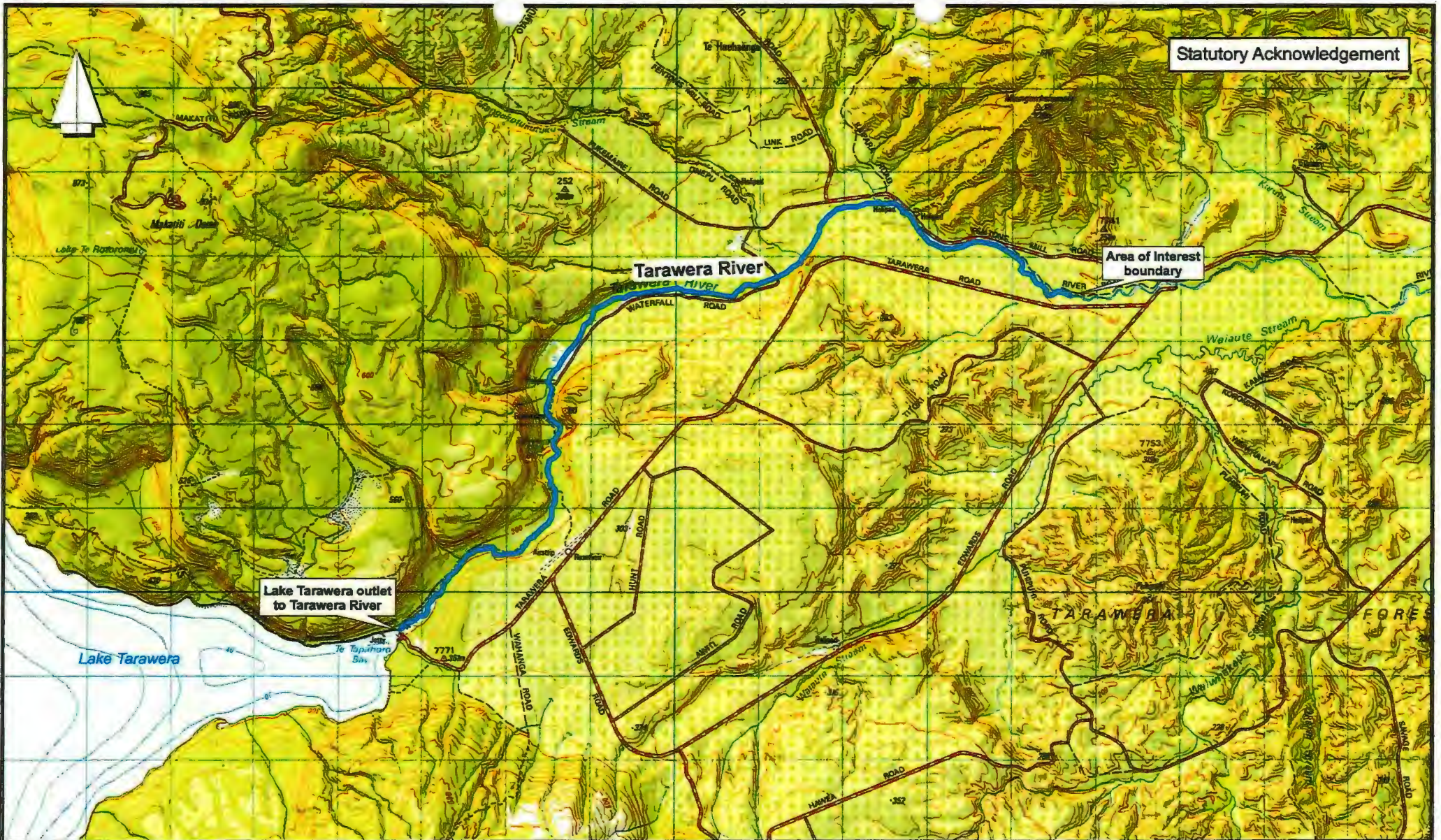
Areas referred to in the Deed of Settlement between
 the Affiliate Te Arawa Iwi/Hapu and the Crown

Approved as to boundaries:

[Signature] 2/3/06
 for and on behalf of the Affiliate Te Arawa Iwi/Hapu

[Signature] 3/3/2006
 for and on behalf of the Crown

SO 364730



Statutory Acknowledgement

Area of Interest boundary

Tarawera River

Lake Tarawera outlet to Tarawera River

Lake Tarawera



South Auckland Land District
Boundaries are indicative only.
Grid lines are at 1000 metres.



AE02785

Part of Tarawera River

Areas referred to in the Deed of Settlement between
the Affiliate Te Arawa Iwi/Hapu and the Crown

Approved as to boundaries:
[Signature] 2.8.06
 for and on behalf of the Affiliate Te Arawa Iwi/Hapu
[Signature] 8.12.06
 for and on behalf of the Crown

SO 364731



Atiamuri Dam

Statutory Acknowledgement

Waikato River

Huka Falls



South Auckland Land District
Boundaries are indicative only.
Grid lines are at 1000 metres.



AED2785

Part of Waikato River (Atiamuri Dam to Huka Falls)

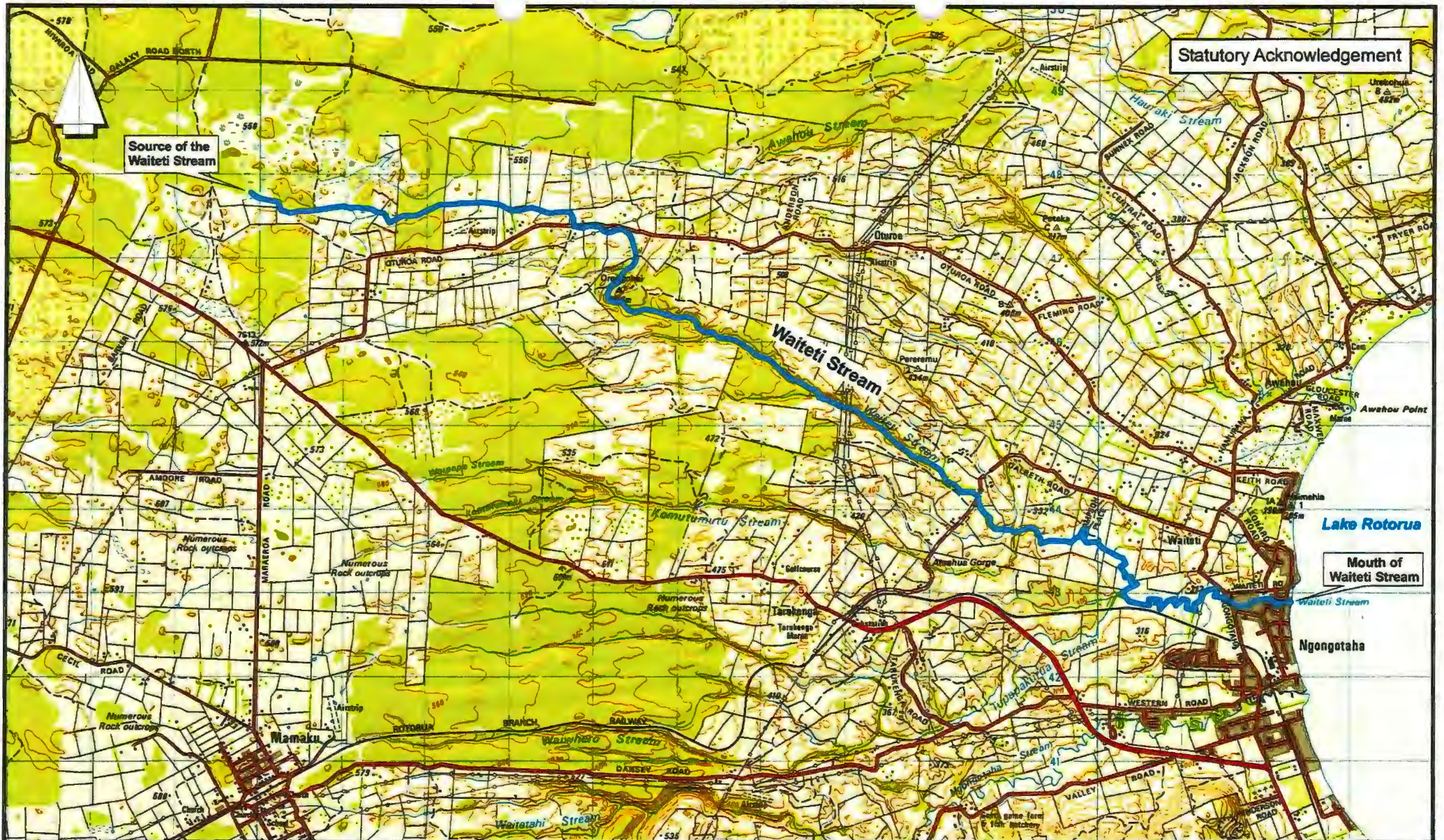
Areas referred to in the Deed of Settlement between
the Affiliate Te Arawa Iwi/Hapu and the Crown

Approved as to boundaries:

..... *[Signature]* 4.5.06
for and on behalf of the Affiliate Te Arawa Iwi/Hapu

..... *[Signature]* 8.8.2006
for and on behalf of the Crown

SO 364734



Source of the Waiteti Stream

Lake Rotorua

Mouth of Waiteti Stream



South Auckland Land District
Boundaries are indicative only.
Grid lines are at 1000 metres.



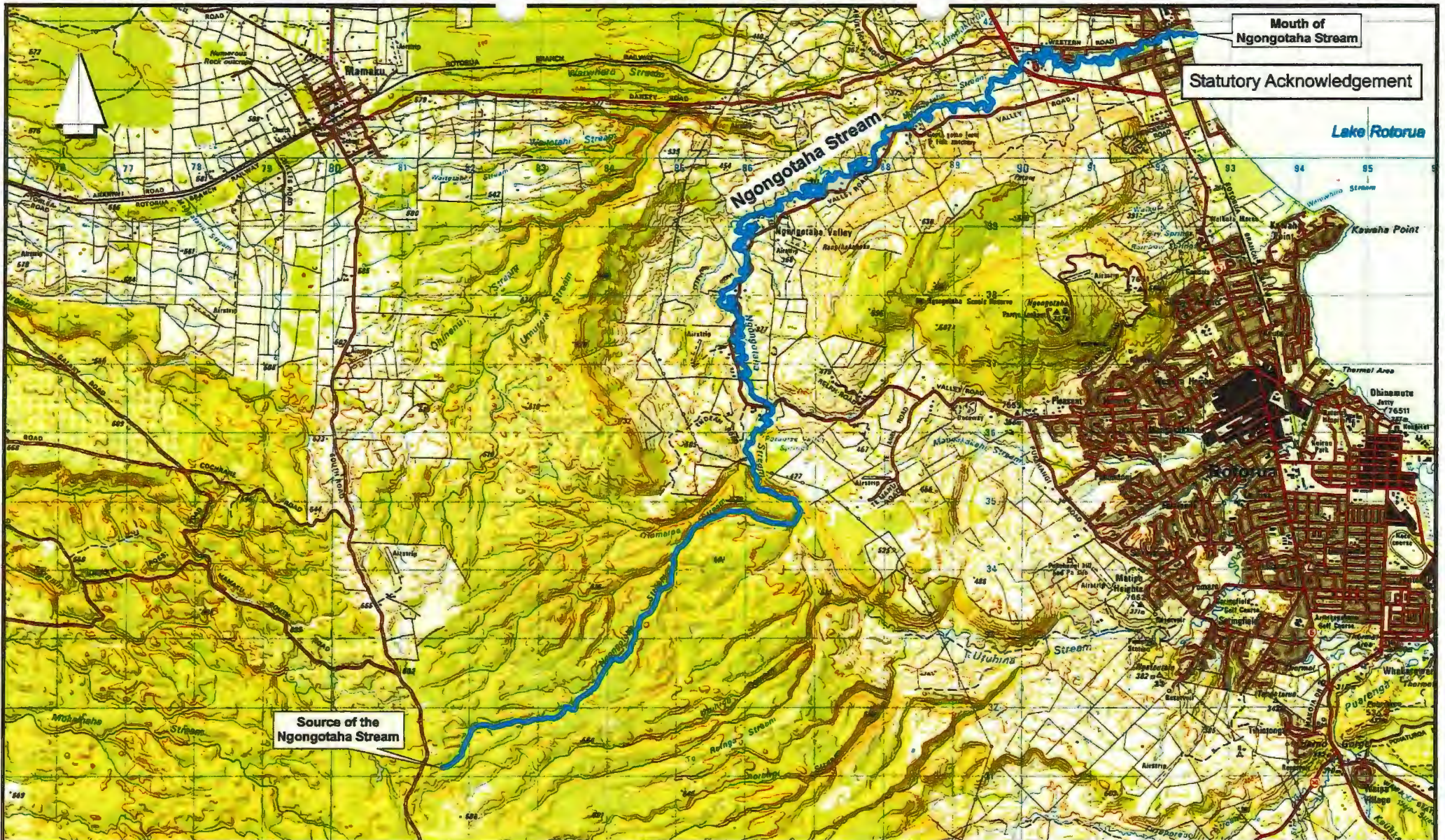
AE02785

Waiteti Stream

Areas referred to in the Deed of Settlement between
the Affiliate Te Arawa Iwi/Hapu and the Crown

Approved as to boundaries:
 *[Signature]* 6.1.04
 for and on behalf of the Affiliate Te Arawa Iwi/Hapu
 *[Signature]* 8.8.2006
 for and on behalf of the Crown

SO 364735



South Auckland Land District
 Boundaries are indicative only.
 Grid lines are at 1000 metres.



AE02785

Ngongotaha Stream

**Areas referred to in the Deed of Settlement between
 the Affiliate Te Arawa Iwi/Hapu and the Crown**

Approved as to boundaries:

[Signature] 8/8/06
 for and on behalf of the Affiliate Te Arawa Iwi/Hapu
[Signature] 8/8/2006
 for and on behalf of the Crown

SO 364736

For future vesting in fee simple

Lake Rotorua



Karamuramu Baths Land
Part Lot 1 DPS 49938. Subject to survey.

0 250 metres
Approximate scale



South Auckland Land District
Territorial authority : Rotorua District
Boundaries are indicative only.
Aerial photography flown June 2006



AE02725

Karamuramu Baths Land

Areas referred to in the Deed of Settlement between the Affiliate Te Arawa Iwi/Hapu and the Crown

Approved as to boundaries:
[Signature] 8.8.06
for and on behalf of the Affiliate Te Arawa Iwi/Hapu
[Signature] 8.8.2006
for and on behalf of the Crown

SO 370848

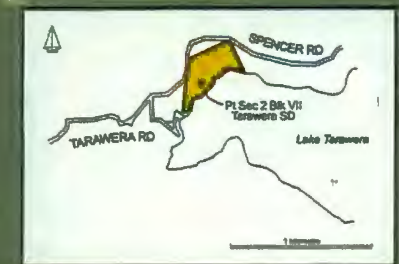
Vest fee simple



SPENCER RD

TARAWERA RD

Lake Tarawera



Punaromia Site
10.7350 hectares, approximately, being Part Section 2 Block VII Tarawera Survey District. Part Gazette 1906 page 2996. Subject to survey.



South Auckland Land District
Territorial authority: Rotorua District
Boundaries are indicative only.
Aerial photography Rotorua DC 2001



4812785

Punaromia Site

**Areas referred to in the Deed of Settlement between
the Affiliate Te Arawa Iwi/Hapu and the Crown**

Approved as to boundaries:

[Signature] 15/12/07
for and on behalf of the Affiliate Te Arawa Iwi/Hapu
[Signature] 18/12/07
for and on behalf of the Crown

SO 389397